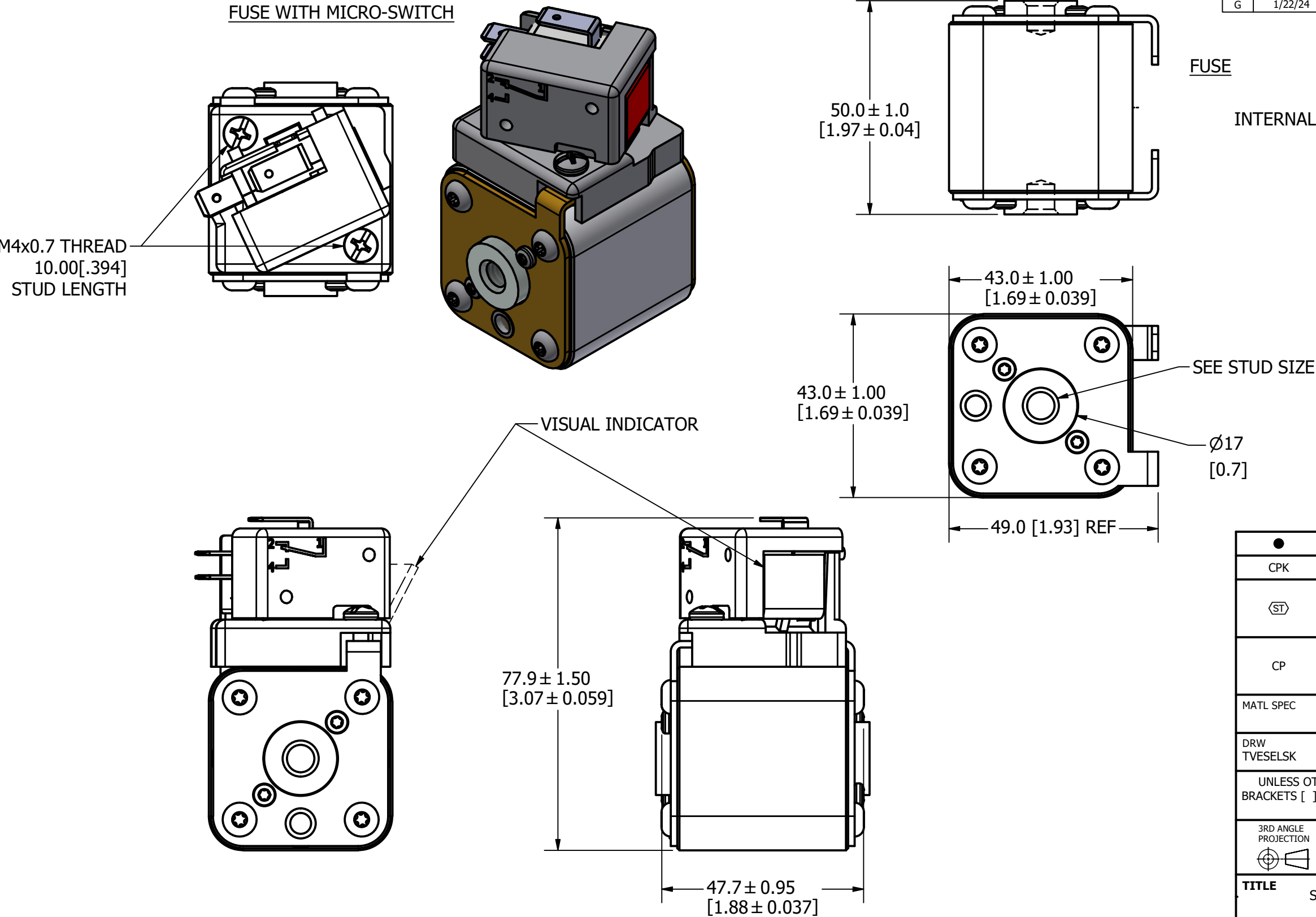


MOUNTING SPECS:  
STUD SIZE: 5/16-18 UNC-2B  $\nabla$  6.0[0.24]  
STUD TORQUE: 13-20Nm

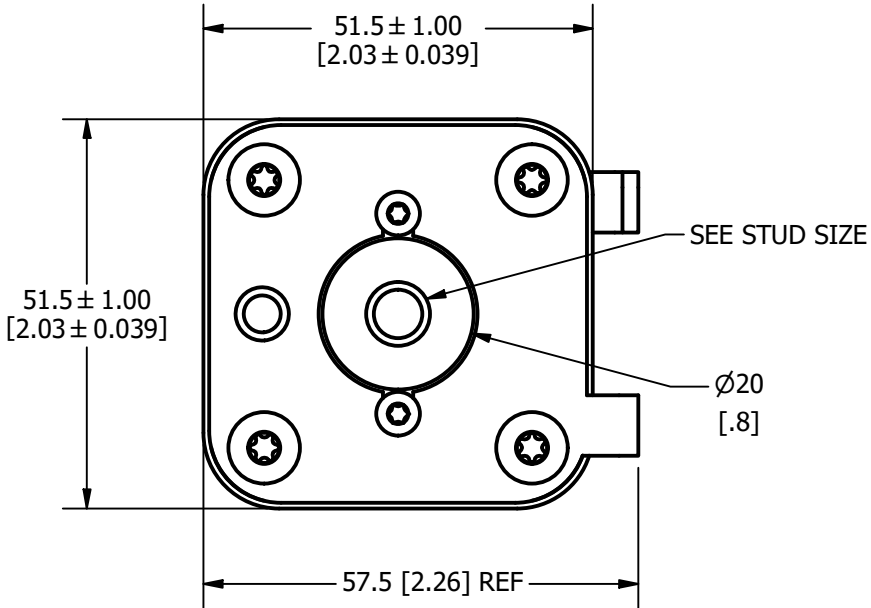
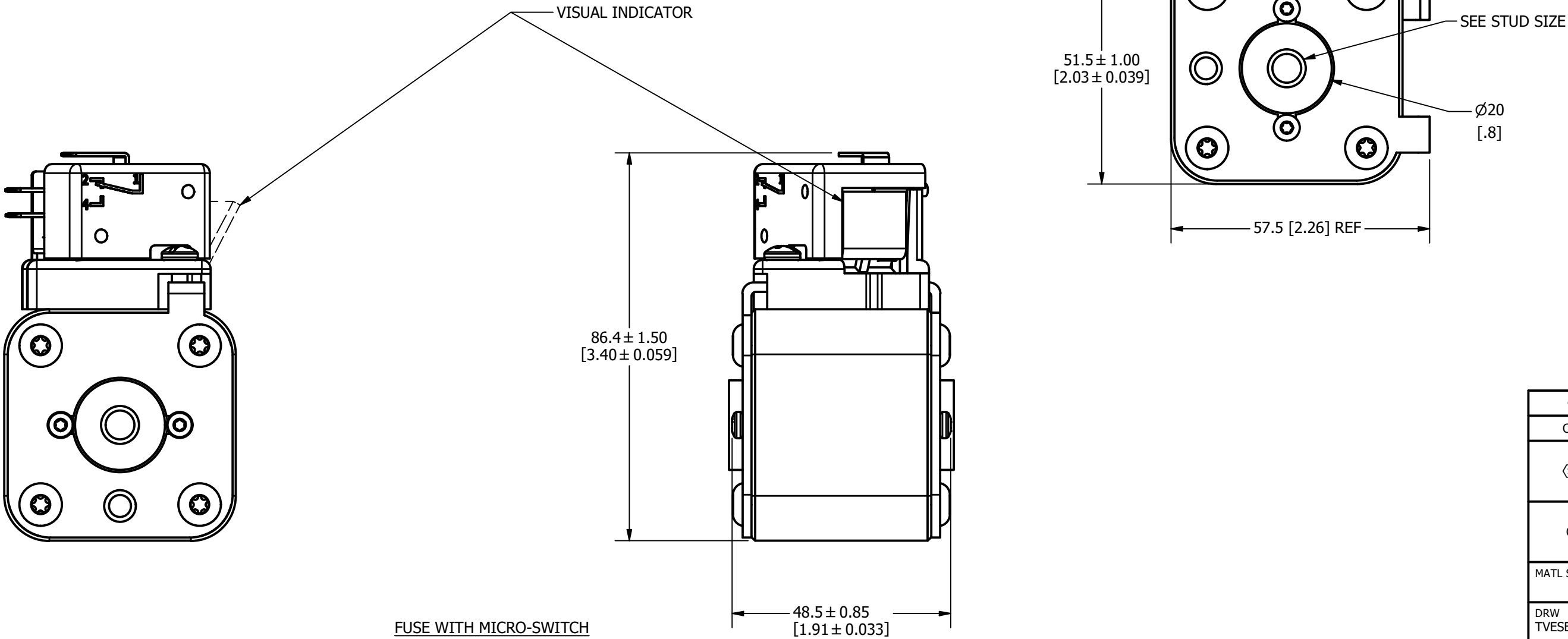
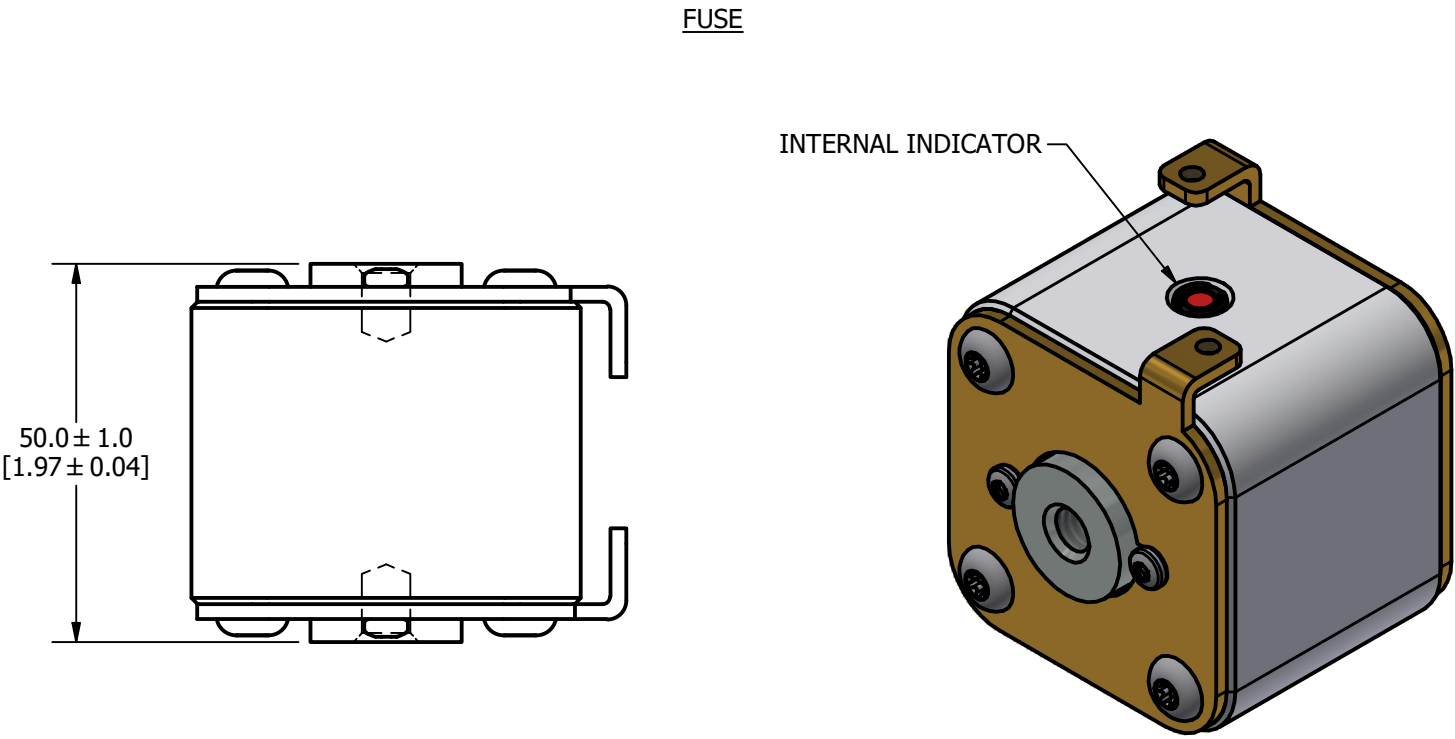
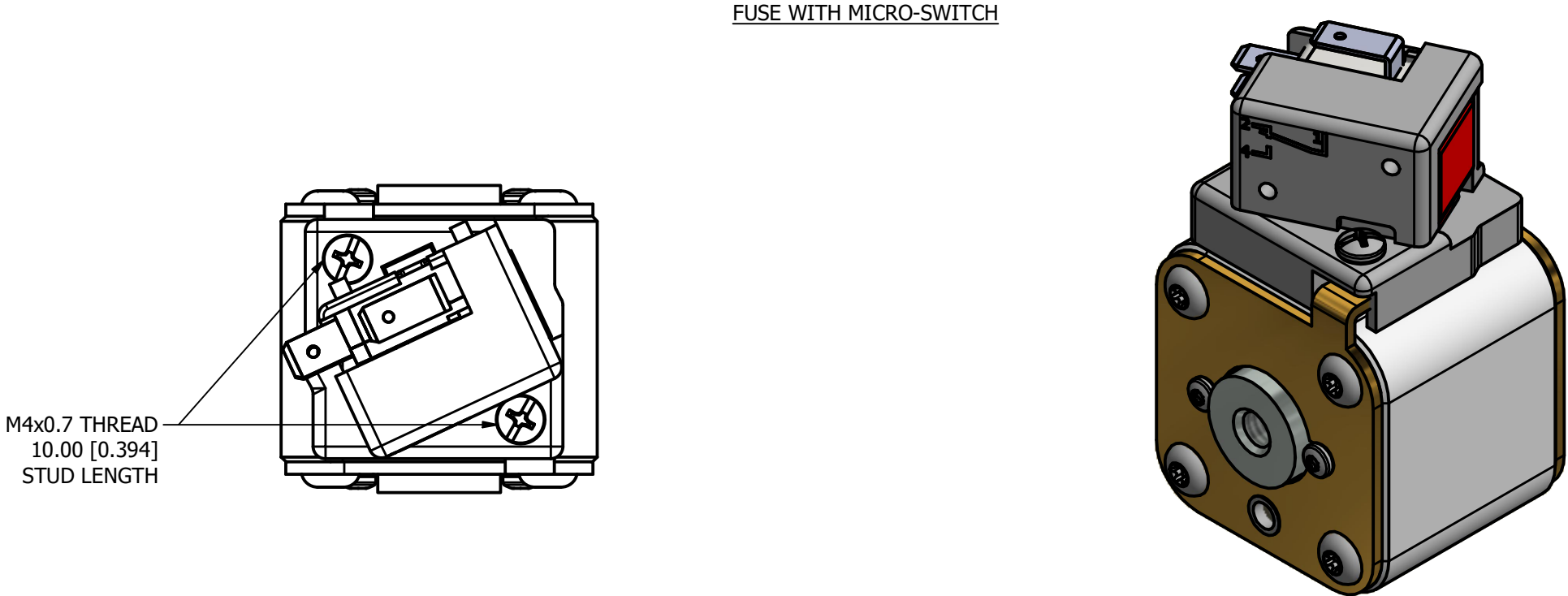
REVISION		
REV	DATE	DESCRIPTION
A	03/16/2017	517373GCP - RELEASED -TV
B	10/19/2017	518344ECP - REVISE MOUNTING SPEC NOTES -TV
C	8/30/18	519782ECP/D - CHG STUD TORQUE MRY
D	5/5/22	525159ECP/D - CHANGE HEIGHT, ADD TOLERANCES MRY
E	5/19/22	525232ECP/D - UPDATE LENGTH DIMENSION MRY
F	7/14/22	525433ECP/D - CHANGE HEIGHT DIMENSION FORMAT MRY
G	1/22/24	526835ECP/D - ADDED VIEW WITHOUT MICRO-SWITCH JTM

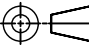



●	DENOTES CRITICAL CHARACTERISTICS.		
CPK	DENOTES CPK DIMENSIONS, -MINIMUM CPK VALUE		
ST	DENOTES A CHARACTERISTIC THAT PROVIDES AN INDICATION OF PROCESS PERFORMANCE. PROCEDURE FOR MEASUREMENT AND TRACKING TO BE DEFINED IN LITTELFUSE INSPECTION INSTRUCTIONS.		
CP	DENOTES CP DIMENSIONS, -MINIMUM CP VALUE MUST BE WITHIN THE DIMENSIONAL LIMITATIONS SHOWN ON DRAWING AND INITIALLY LOCATED TO ALLOW FOR MAXIMUM TOOL LIFE.		
MATL SPEC		FINISH	
DRW TVESELSK	DATE 12/31/1969	SCALE NTS	FINISH GOOD WT GRAMS/PIECE
UNLESS OTHERWISE SPECIFIED, DIMENSIONS ARE IN MILLIMETERS, DIMENSIONS IN BRACKETS [ ] ARE INCHES DIMENSIONING AND DO NOT INCLUDE PLATING. TOLERANCING TO BE INTERPRETED IN ACCORDANCE WITH ANSI Y14.5M-1994			
3RD ANGLE PROJECTION			
TITLE SQUARE BODY 30 CASE SIZE - ENGLISH THREAD OUTLINE			
Littelfuse® CHICAGO, ILLINOIS 60631		REVISION G	DRWG NO. OL-PSR030FS0000
		SHEET 1 OF 1	

MOUNTING SPECS:  
STUD SIZE: 5/16-18 UNC-2B  $\nabla$  8.0[0.31]  
STUD TORQUE: 13-20Nm

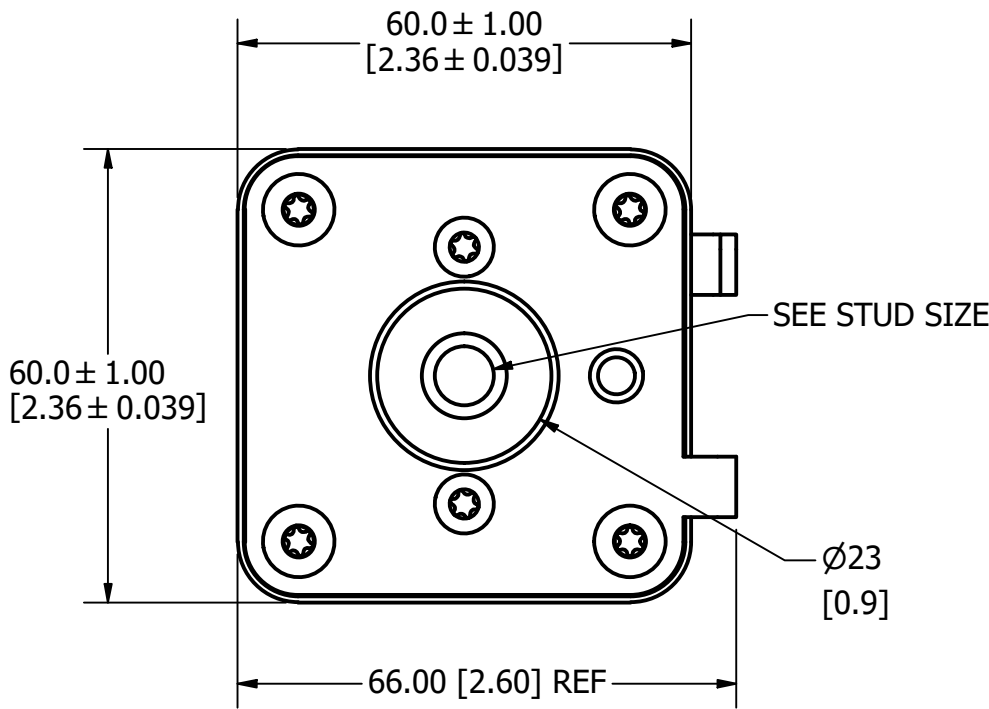
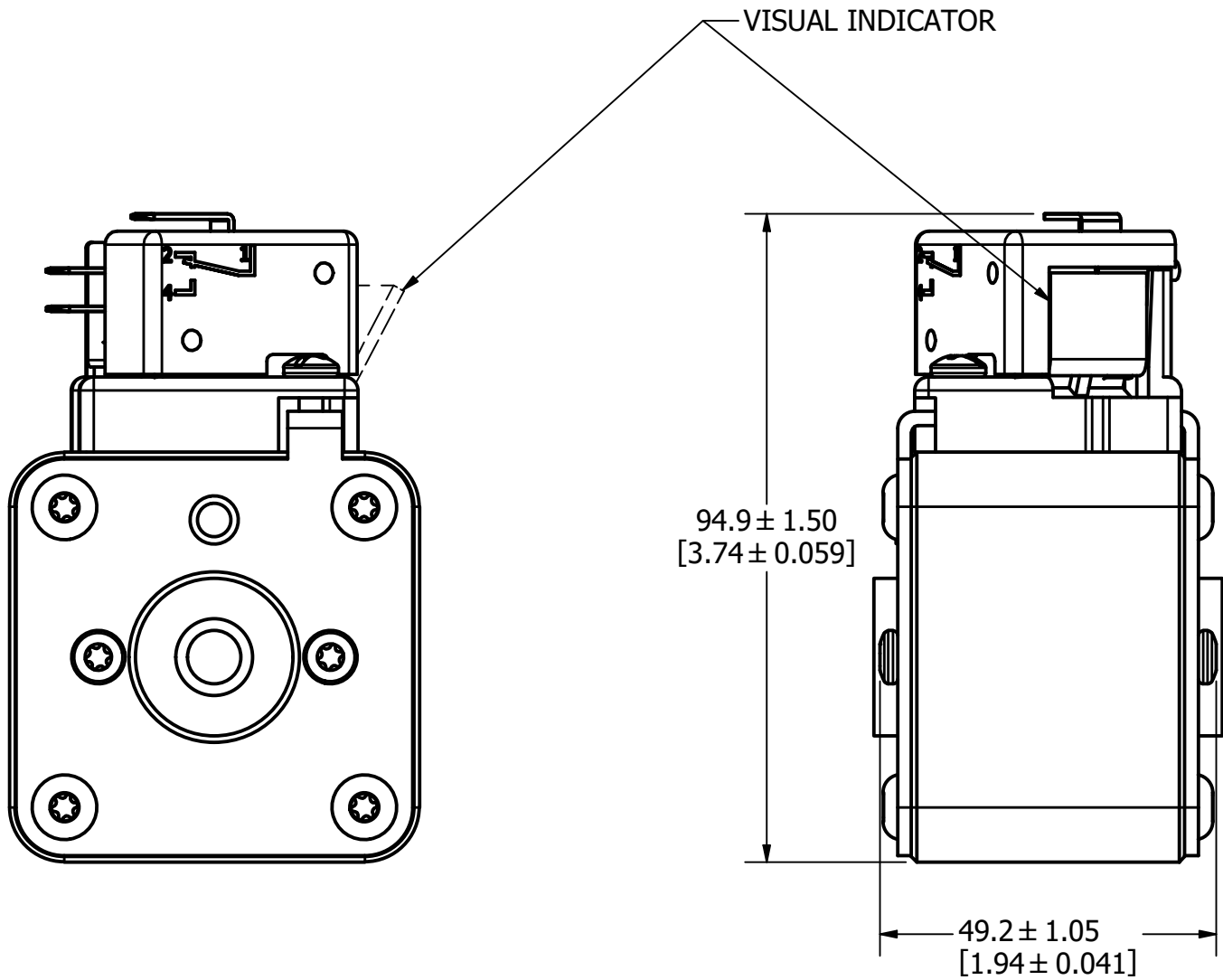
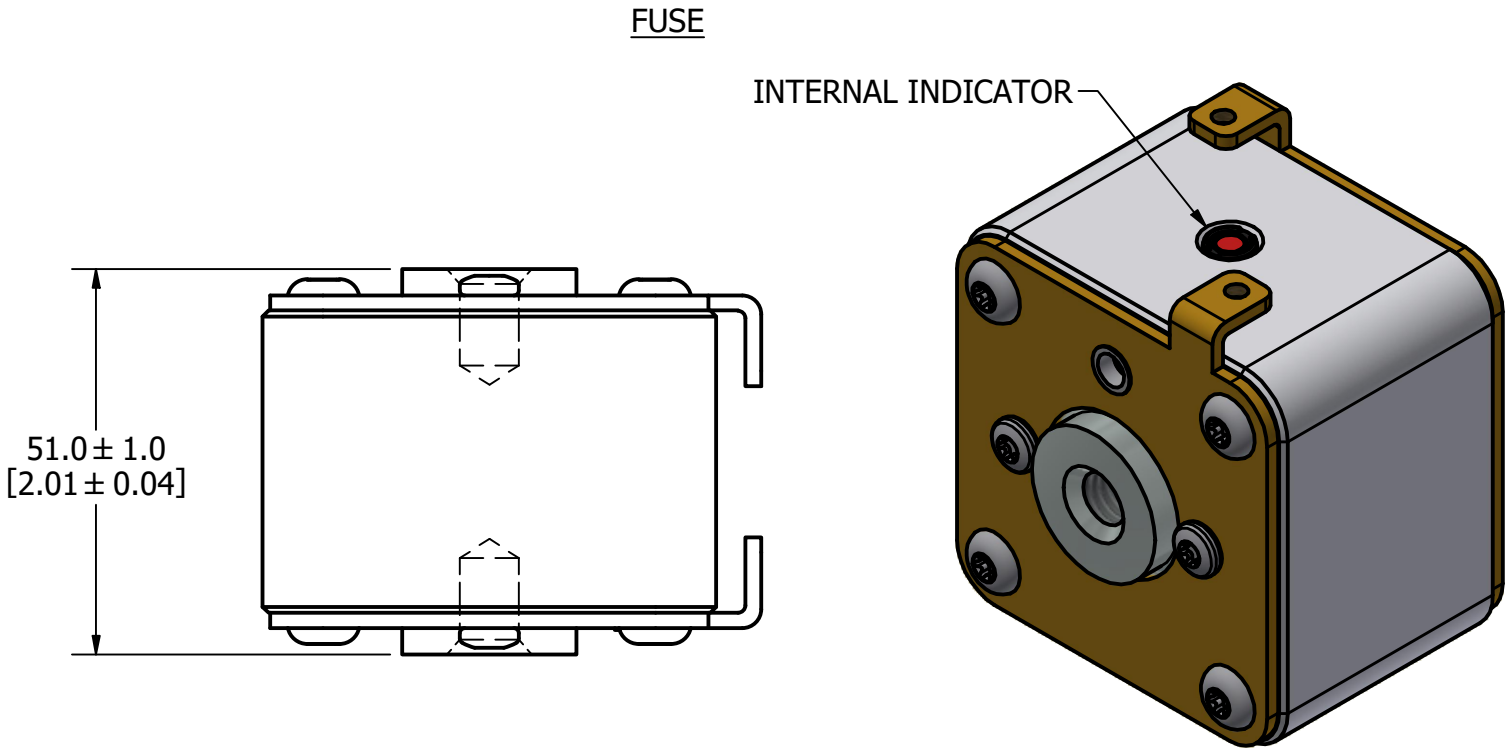
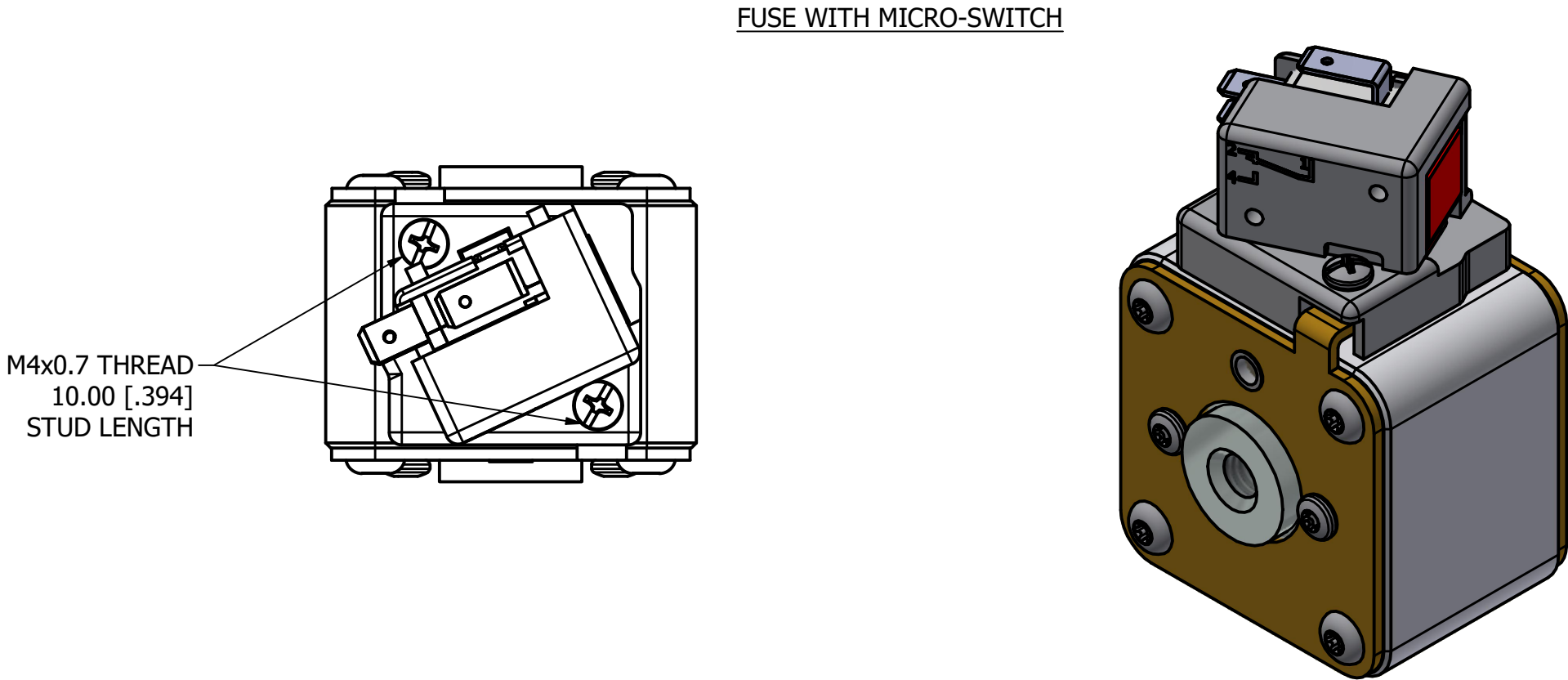
REVISION		
REV	DATE	DESCRIPTION
A	08/11/2017	518016GCP - RELEASED -TV
B	10/19/2017	518344ECP - REVISE MOUNTING SPEC NOTES -TV
C	8/30/18	519782ECP/D - CHG STUD TORQUE MRY
D	5/5/22	525159ECP/D - CHANGE HEIGHT, ADD TOLERANCES MRY
E	5/19/22	525232ECP/D - UPDATE LENGTH DIMENSION MRY
F	7/14/22	525433ECP/D - CHANGE HEIGHT DIMENSION FORMAT MRY
G	1/12/24	526835ECP/D - ADDED VIEW WITHOUT MICRO-SWITCH JTM

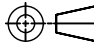



●	DENOTES CRITICAL CHARACTERISTICS.		
CPK	DENOTES CPK DIMENSIONS, -MINIMUM CPK VALUE		
(ST)	DENOTES A CHARACTERISTIC THAT PROVIDES AN INDICATION OF PROCESS PERFORMANCE. PROCEDURE FOR MEASUREMENT AND TRACKING TO BE DEFINED IN LITTELFUSE INSPECTION INSTRUCTIONS.		
CP	DENOTES CP DIMENSIONS, -MINIMUM CP VALUE MUST BE WITHIN THE DIMENSIONAL LIMITATIONS SHOWN ON DRAWING AND INITIALLY LOCATED TO ALLOW FOR MAXIMUM TOOL LIFE.		
MATL SPEC		FINISH	
DRW TVESELSK	DATE 1/12/2024	SCALE NTS	FINISH GOOD WT GRAMS/PIECE
UNLESS OTHERWISE SPECIFIED, DIMENSIONS ARE IN MILLIMETERS, DIMENSIONS IN BRACKETS [ ] ARE INCHES DIMENSIONING AND DO NOT INCLUDE PLATING. TOLERANCING TO BE INTERPRETED IN ACCORDANCE WITH ANSI Y14.5M-1994			
3RD ANGLE PROJECTION 			
TITLE SQUARE BODY 31 CASE SIZE - ENGLISH THREAD OUTLINE			
 <b>Littelfuse®</b> CHICAGO, ILLINOIS 60631		REVISION G	DRWG NO. OL-PSR031FS0000 SHEET 1 OF 1

MOUNTING SPECS:  
STUD SIZE: 3/8-16 UNC-2B  $\nabla$  11.5 [0.45]  
STUD TORQUE: 26-35Nm

REVISION		
REV	DATE	DESCRIPTION
A	03/16/2016	518344GCP - RELEASED -TV
B	10/19/2017	518344ECP - REVISE MOUNTING SPEC NOTES -TV
C	8/30/18	519782ECP/D - CHG STUD TORQUE MRY
D	5/5/22	525159ECP/D - CHANGE HEIGHT, ADD TOLERANCES MRY
E	5/19/22	525232ECP/D - UPDATE LENGTH DIMENSION MRY
F	7/14/22	525433ECP/D - CHANGE HEIGHT DIMENSION FORMAT MRY
G	1-12-24	526835ECP/D - ADDED VIEW WITHOUT MICRO-SWITCH JTM



●	DENOTES CRITICAL CHARACTERISTICS.		
CPK	DENOTES CPK DIMENSIONS, -MINIMUM CPK VALUE		
(ST)	DENOTES A CHARACTERISTIC THAT PROVIDES AN INDICATION OF PROCESS PERFORMANCE. PROCEDURE FOR MEASUREMENT AND TRACKING TO BE DEFINED IN LITTELFUSE INSPECTION INSTRUCTIONS.		
CP	DENOTES CP DIMENSIONS, -MINIMUM CP VALUE MUST BE WITHIN THE DIMENSIONAL LIMITATIONS SHOWN ON DRAWING AND INITIALLY LOCATED TO ALLOW FOR MAXIMUM TOOL LIFE.		
MATL SPEC		FINISH	
DRW	DATE	SCALE	FINISH GOOD WT
TVESELSK	1/12/2024	NTS	GRAMS/PIECE
UNLESS OTHERWISE SPECIFIED, DIMENSIONS ARE IN MILLIMETERS, DIMENSIONS IN BRACKETS [ ] ARE INCHES DIMENSIONING AND DO NOT INCLUDE PLATING. TOLERANCING TO BE INTERPRETED IN ACCORDANCE WITH ANSI Y14.5M-1994			
3RD ANGLE PROJECTION			
			
TITLE			
SQUARE BODY 32 CASE SIZE - ENGLISH THREAD OUTLINE			
 <b>Littelfuse®</b> CHICAGO, ILLINOIS 60631		REVISION G	DRWG NO. OL-PSR032FS0000
		SHEET 1 OF 2	

MOUNTING SPECS:  
STUD SIZE: 1/2-13 UNC - 2B  $\nabla$ 13.0[0.51]  
STUD TORQUE: 45-55Nm

REVISION		
REV	DATE	DESCRIPTION
A	03/16/2016	517373GCP - RELEASED -TV
B	10/19/2017	518344ECP - REVISE STUD SIZE NOTES -TV
C	8/30/18	519782ECP/D - CHG STUD TORQUE MRY
D	5/5/22	525159ECP/D - CHANGE HEIGHT, ADD TOLERANCES MRY
E	5/19/22	525232ECP/D - UPDATE LENGTH DIMENSION MRY
F	7/14/22	525433ECP/D - CHANGE HEIGHT DIMENSION FORMAT MRY
G	1/17/24	536835ECP/D - ADDED VIEW WITHOUT MICRO-SWITCH JTM

FUSE WITH MICRO-SWITCH

FUSE

INTERNAL INDICATOR

M4x0.7 THREAD  
10.00 [.394]  
STUD LENGTH

51.0 ± 1.0  
[2.0 ± 0.04]

VISUAL INDICATOR

SEE STUD SIZE

Ø30  
[1.2]

108.4 ± 1.50  
[4.27 ± 0.059]

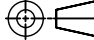

73.5 ± 1.00  
[2.89 ± 0.039]

73.5 ± 1.00  
[2.89 ± 0.039]

79.5 [3.13] REF

49.5 ± 0.94  
[1.95 ± 0.037]

FUSE WITH MICRO-SWITCH

●	DENOTES CRITICAL CHARACTERISTICS.		
CPK	DENOTES CPK DIMENSIONS, -MINIMUM CPK VALUE		
(ST)	DENOTES A CHARACTERISTIC THAT PROVIDES AN INDICATION OF PROCESS PERFORMANCE. PROCEDURE FOR MEASUREMENT AND TRACKING TO BE DEFINED IN LITTELFUSE INSPECTION INSTRUCTIONS.		
CP	DENOTES CP DIMENSIONS, -MINIMUM CP VALUE MUST BE WITHIN THE DIMENSIONAL LIMITATIONS SHOWN ON DRAWING AND INITIALLY LOCATED TO ALLOW FOR MAXIMUM TOOL LIFE.		
MATL SPEC		FINISH	
DRW	DATE	SCALE	FINISH GOOD WT
TVESELSK	12/31/1969	NTS	GRAMS/PIECE
UNLESS OTHERWISE SPECIFIED, DIMENSIONS ARE IN MILLIMETERS, DIMENSIONS IN BRACKETS [ ] ARE INCHES DIMENSIONING AND DO NOT INCLUDE PLATING. TOLERANCING TO BE INTERPRETED IN ACCORDANCE WITH ANSI Y14.5M-1994			
3RD ANGLE PROJECTION			
			
TITLE			
SQUARE BODY 33 CASE SIZE - ENGLISH THREAD OUTLINE			
 <b>Littelfuse®</b> CHICAGO, ILLINOIS 60631		REVISION	DRWG NO.
		G	SHEET 1 OF 1
		OL-PSR033FS0000	



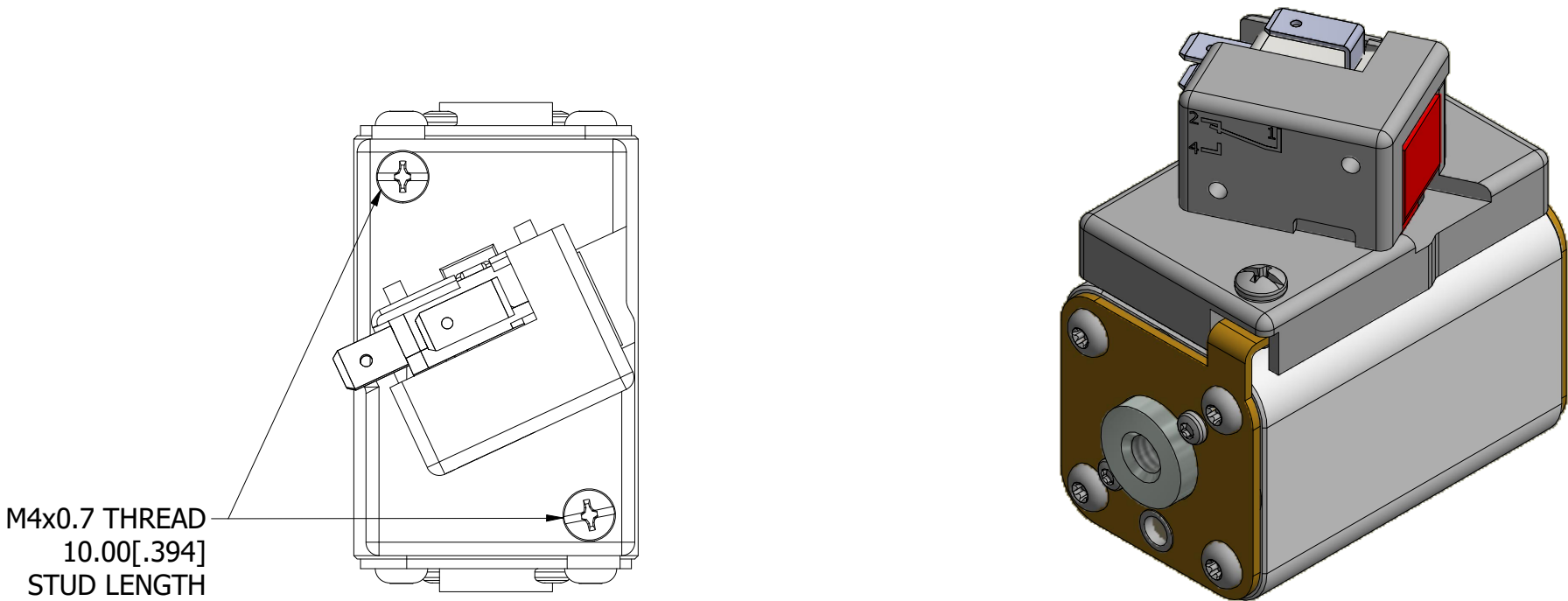
MOUNTING SPECS

STUD SIZE: 5/16-18 UNC-2B  $\nabla$  6.0 [0.24]

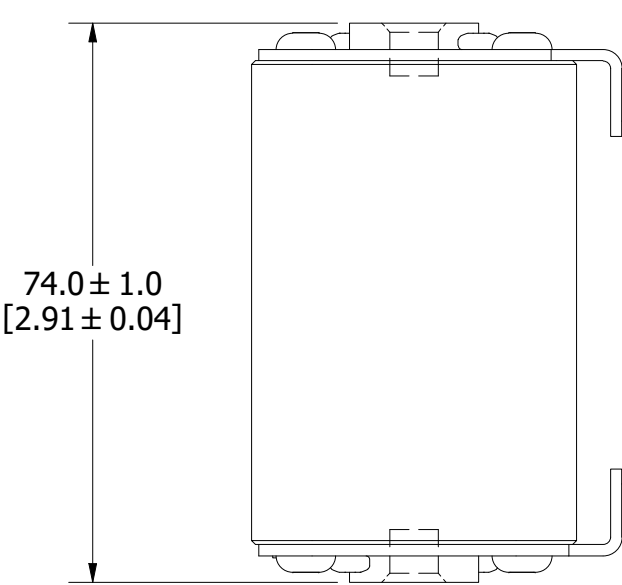
STUD TORQUE: 13-20Nm

REVISION		
REV	DATE	DESCRIPTION
A	01/10/2018	518685GCP - RELEASED -TV
B	8/30/18	519782ECP/D - CHG STUD TORQUE MRY
C	5/5/22	525161ECP/D - CHANGE HEIGHT, ADD TOLERANCES MRY
D	5/19/22	525232ECP/D - UPDATE LENGTH DIMENSION MRY
E	7/14/22	525433ECP/D - CHANGE HEIGHT DIMENSION FORMAT MRY
F	10/24/23	526836ECP/D - ADD VIEW W/O MICROSWITCH MRY

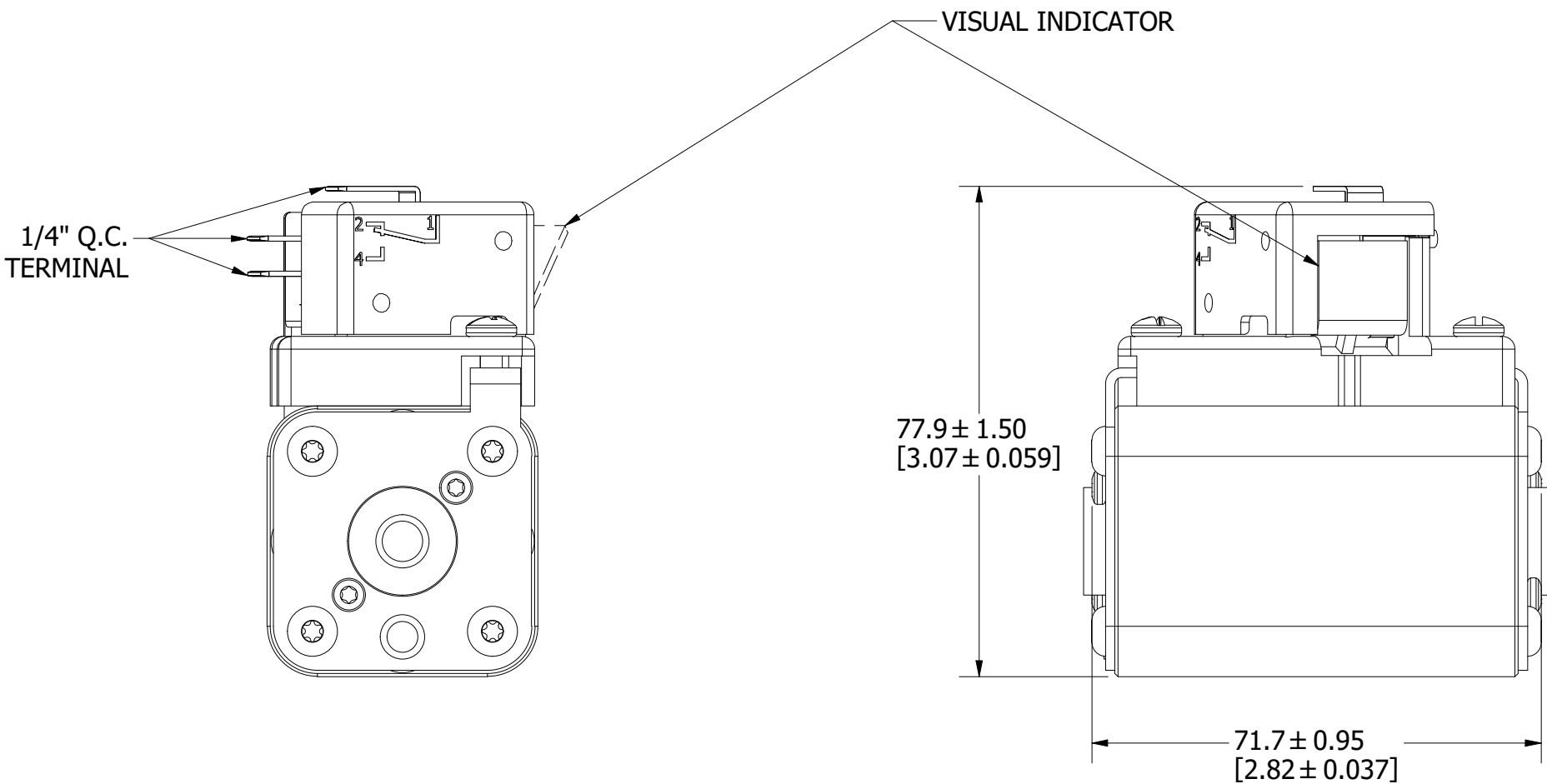
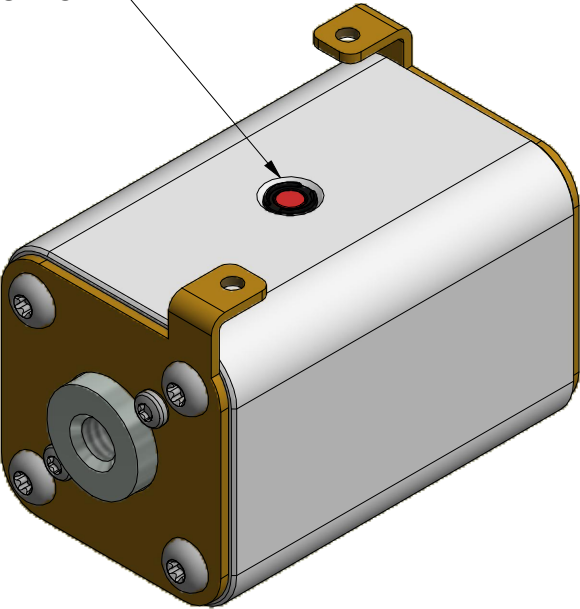
FUSE WITH MICROSWITCH



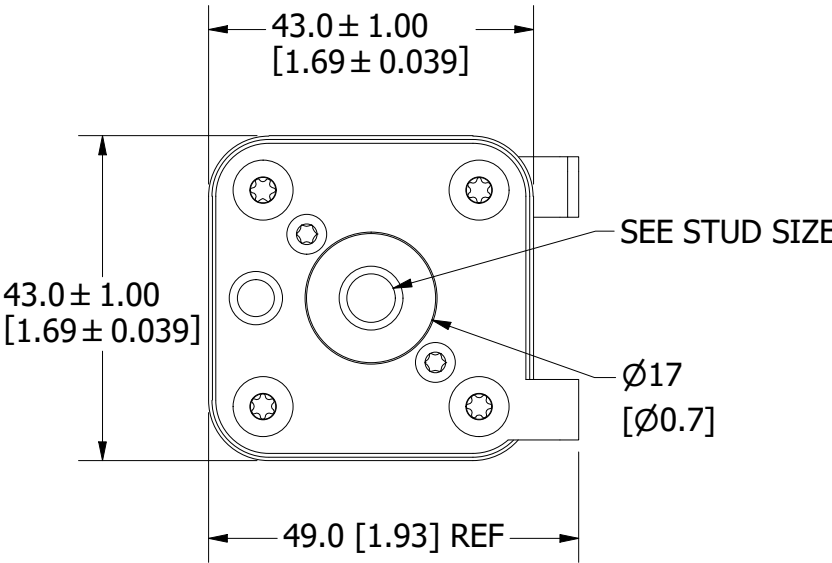
FUSE



INTERNAL INDICATOR



FUSE WITH MICROSWITCH



●	DENOTES CRITICAL CHARACTERISTICS.		
CPK	DENOTES CPK DIMENSIONS, -MINIMUM CPK VALUE		
ST	DENOTES A CHARACTERISTIC THAT PROVIDES AN INDICATION OF PROCESS PERFORMANCE. PROCEDURE FOR MEASUREMENT AND TRACKING TO BE DEFINED IN LITTELFUSE INSPECTION INSTRUCTIONS.		
CP	DENOTES CP DIMENSIONS, -MINIMUM CP VALUE MUST BE WITHIN THE DIMENSIONAL LIMITATIONS SHOWN ON DRAWING AND INITIALLY LOCATED TO ALLOW FOR MAXIMUM TOOL LIFE.		
MATL SPEC		FINISH	
DRW TVESELSK	DATE 11/6/2013	SCALE NTS	FINISH GOOD WT GRAMS/PIECE
UNLESS OTHERWISE SPECIFIED, DIMENSIONS ARE IN MILLIMETERS, DIMENSIONS IN BRACKETS [ ] ARE INCHES DIMENSIONING AND DO NOT INCLUDE PLATING. TOLERANCING TO BE INTERPRETED IN ACCORDANCE WITH ANSI Y14.5M-1994			
3RD ANGLE PROJECTION			
TITLE SQUARE BODY 70 CASE SIZE - ENGLISH THREAD OUTLINE			
Littelfuse® CHICAGO, ILLINOIS 60631		REVISION F	DRWG NO. OL-PSR070FS0000

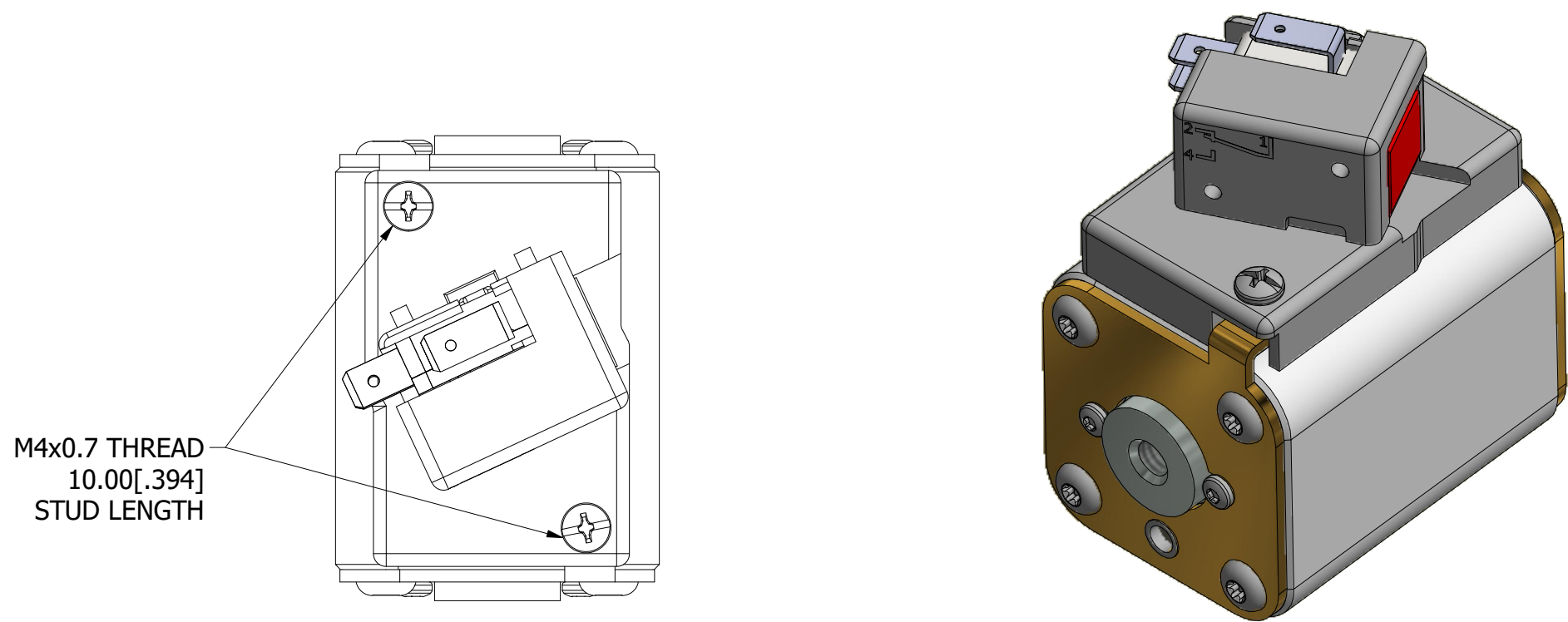
MOUNTING SPECS

STUD SIZE: 5/16-18 UNC-2B  $\nabla$  8.0[0.31]

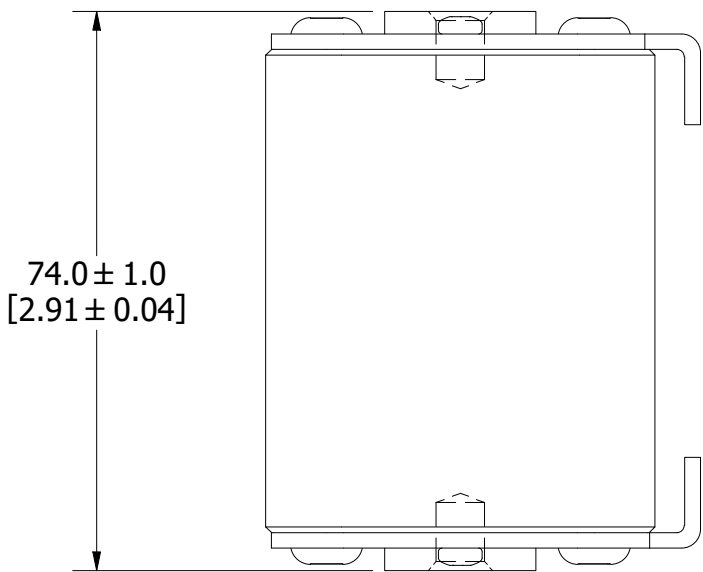
STUD TORQUE: 13-20Nm

REVISION		
REV	DATE	DESCRIPTION
A	03/16/2016	518344GCP - RELEASED -TV
B	10/19/2017	518344ECP - REVISE MOUNTING SPEC NOTES -TV
C	8/30/18	519782ECP/D - CHG STUD TORQUE MRY
D	5/5/22	525161ECP/D - CHANGE HEIGHT, ADD TOLERANCES MRY
E	5/19/22	525232ECP/D - UPDATE LENGTH DIMENSION MRY
F	7/14/22	525433ECP/D - CHANGE HEIGHT DIMENSION FORMAT MRY
G	10/24/23	526836ECP/D - ADD VIEW W/O MICROSWITCH MRY

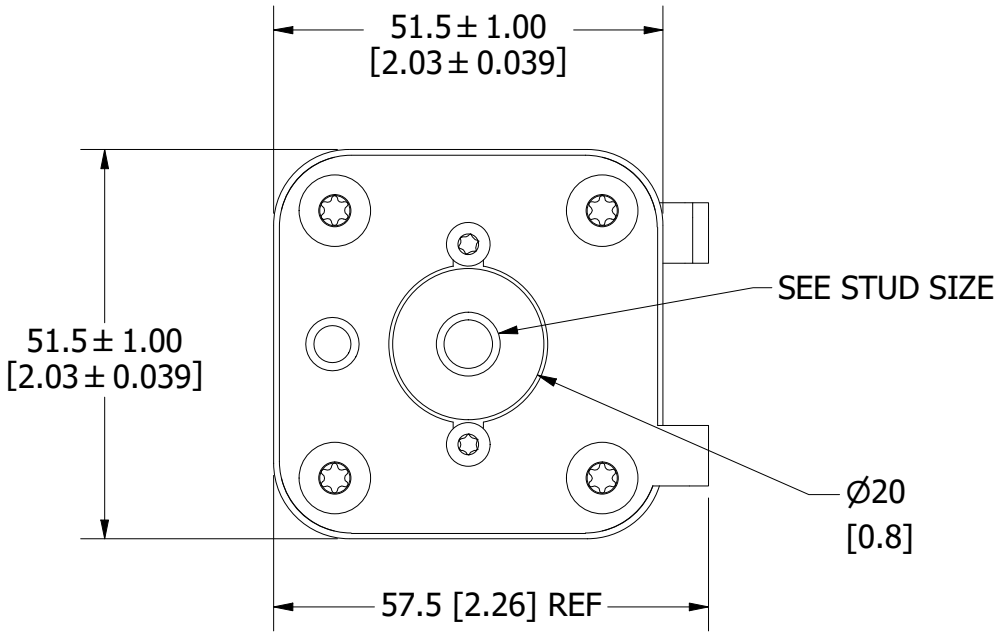
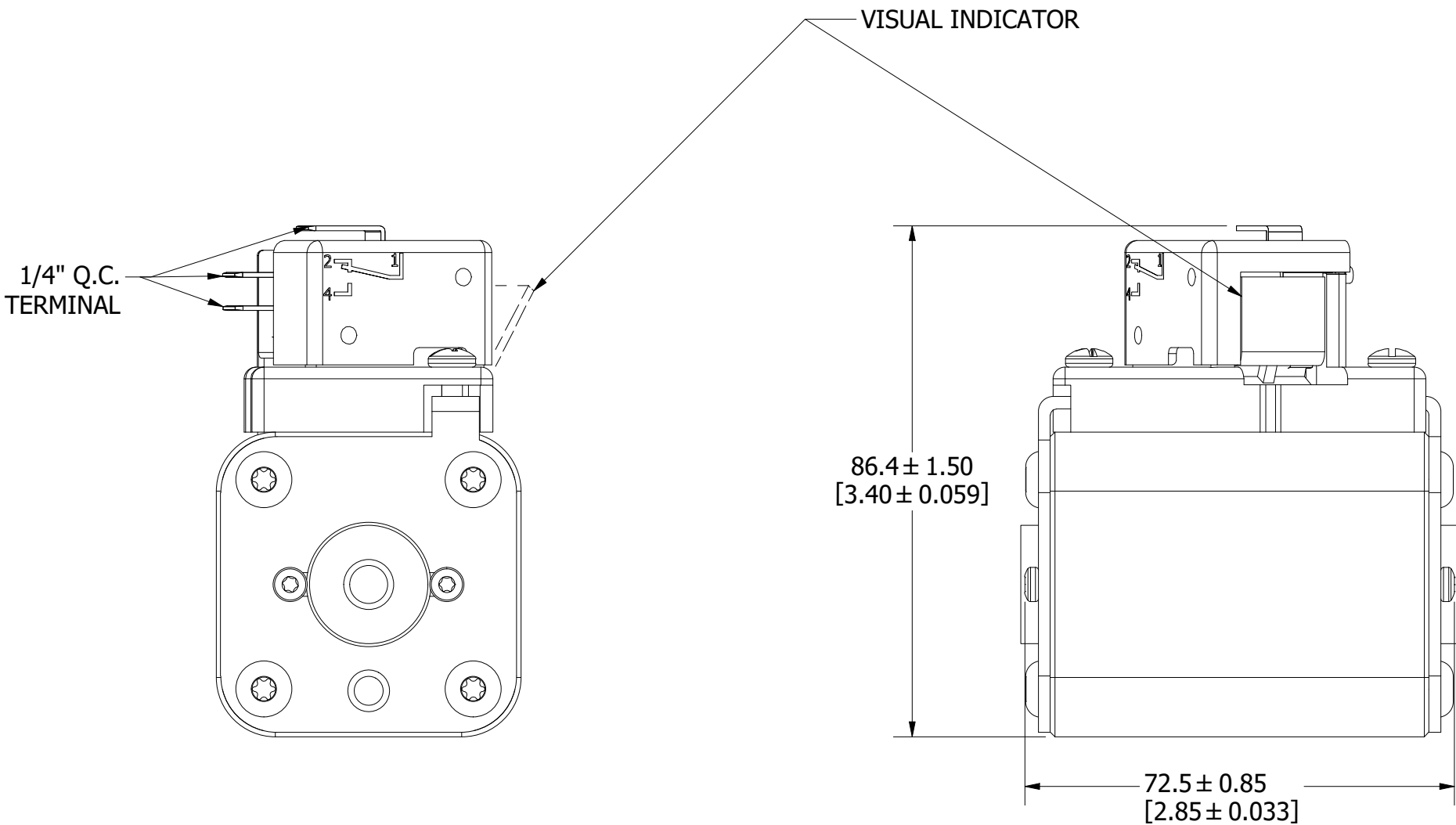
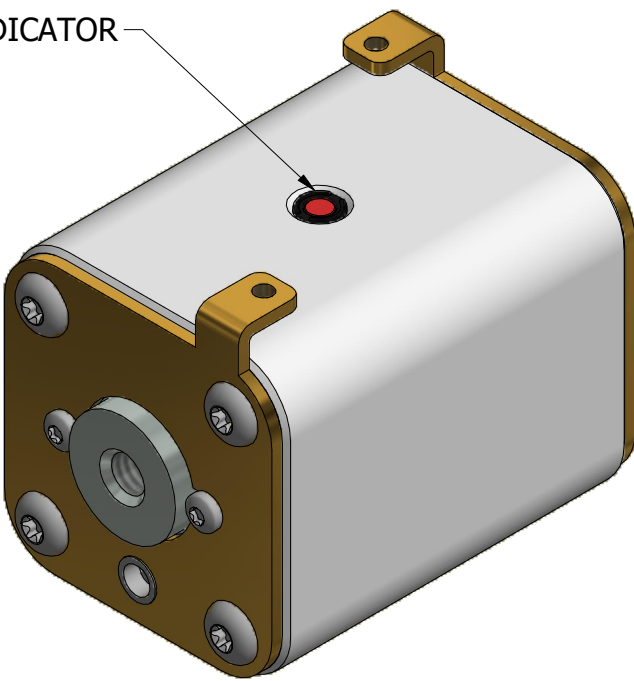
FUSE WITH MICROSWITCH



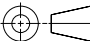

FUSE



INTERNAL INDICATOR



FUSE WITH MICROSWITCH

●	DENOTES CRITICAL CHARACTERISTICS.		
CPK	DENOTES CPK DIMENSIONS, -MINIMUM CPK VALUE		
ST	DENOTES A CHARACTERISTIC THAT PROVIDES AN INDICATION OF PROCESS PERFORMANCE. PROCEDURE FOR MEASUREMENT AND TRACKING TO BE DEFINED IN LITTELFUSE INSPECTION INSTRUCTIONS.		
CP	DENOTES CP DIMENSIONS, -MINIMUM CP VALUE MUST BE WITHIN THE DIMENSIONAL LIMITATIONS SHOWN ON DRAWING AND INITIALLY LOCATED TO ALLOW FOR MAXIMUM TOOL LIFE.		
MATL SPEC		FINISH	
DRW TVESELSK	DATE 11/6/2013	SCALE NTS	FINISH GOOD WT GRAMS/PIECE
UNLESS OTHERWISE SPECIFIED, DIMENSIONS ARE IN MILLIMETERS, DIMENSIONS IN BRACKETS [ ] ARE INCHES DIMENSIONING AND DO NOT INCLUDE PLATING. TOLERANCING TO BE INTERPRETED IN ACCORDANCE WITH ANSI Y14.5M-1994			
3RD ANGLE PROJECTION			
			
TITLE			
SQUARE BODY 71 CASE SIZE - ENGLISH THREAD OUTLINE			
 <b>Littelfuse®</b> CHICAGO, ILLINOIS 60631		REVISION  G	DRWG NO. SHEET 1 OF 1  OL-PSR071FS0000

C

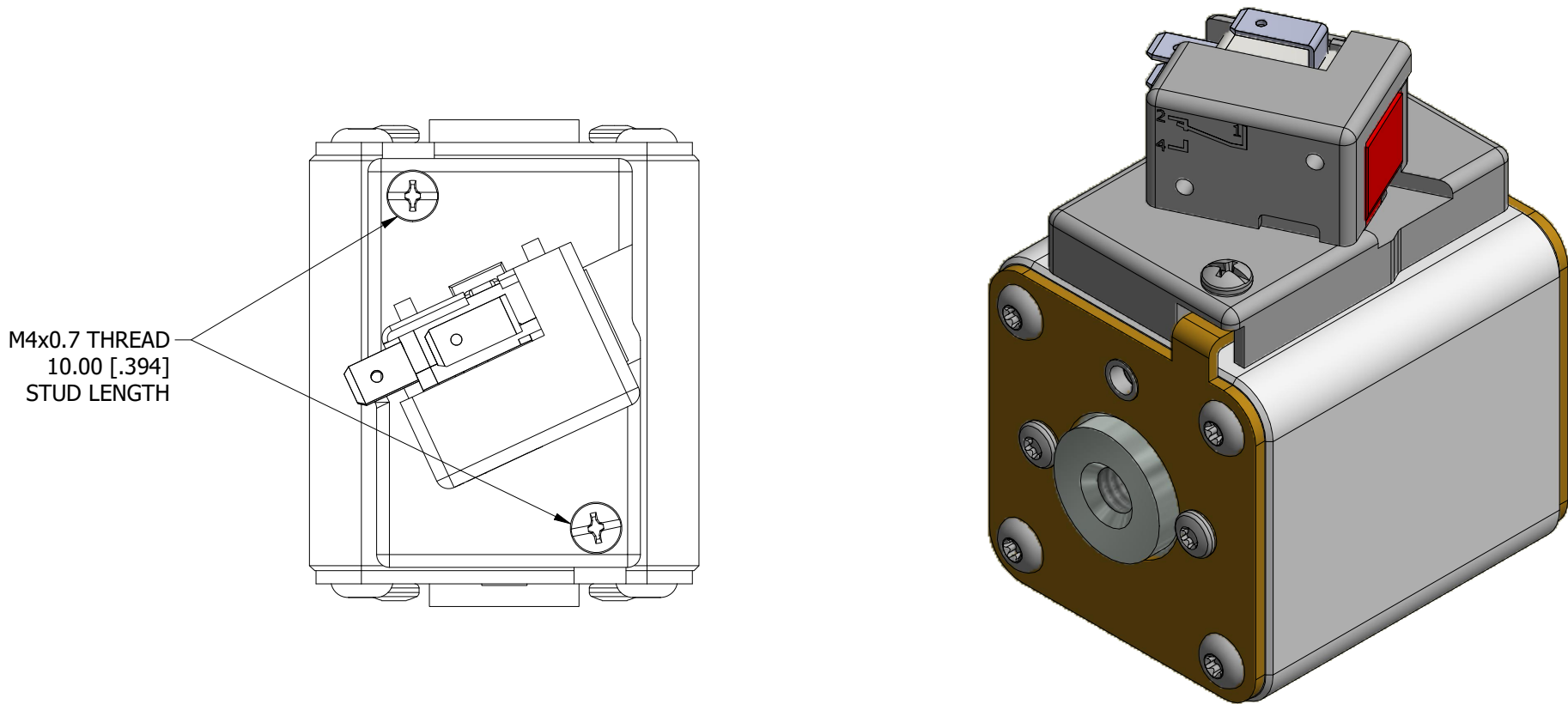
MOUNTING SPECS:

STUD SIZE: 3/8-16 UNC-2B  $\nabla$ 11.5[0.45]

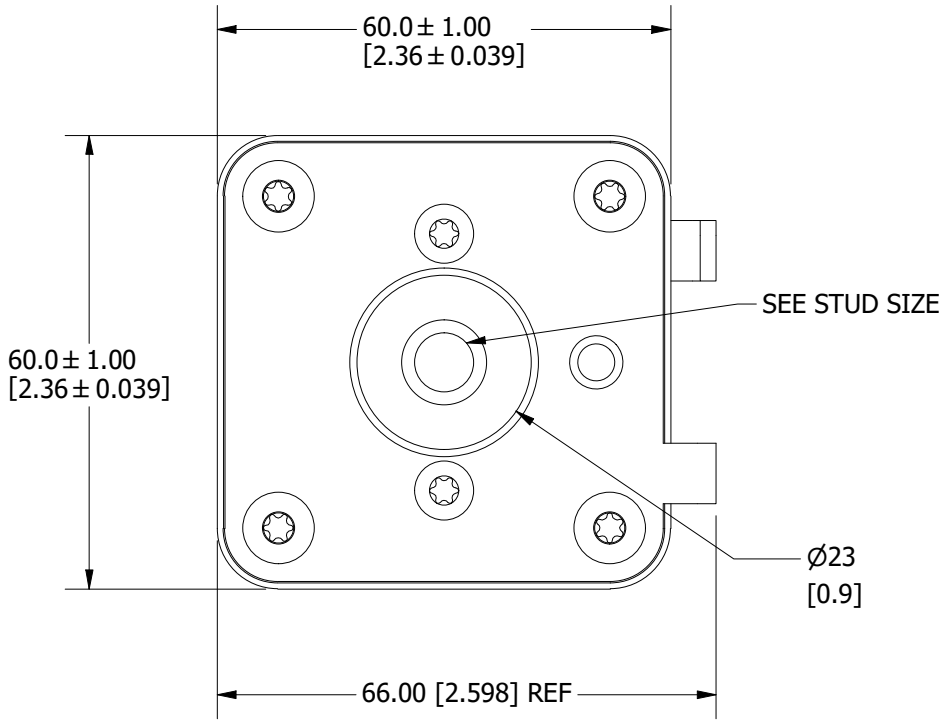
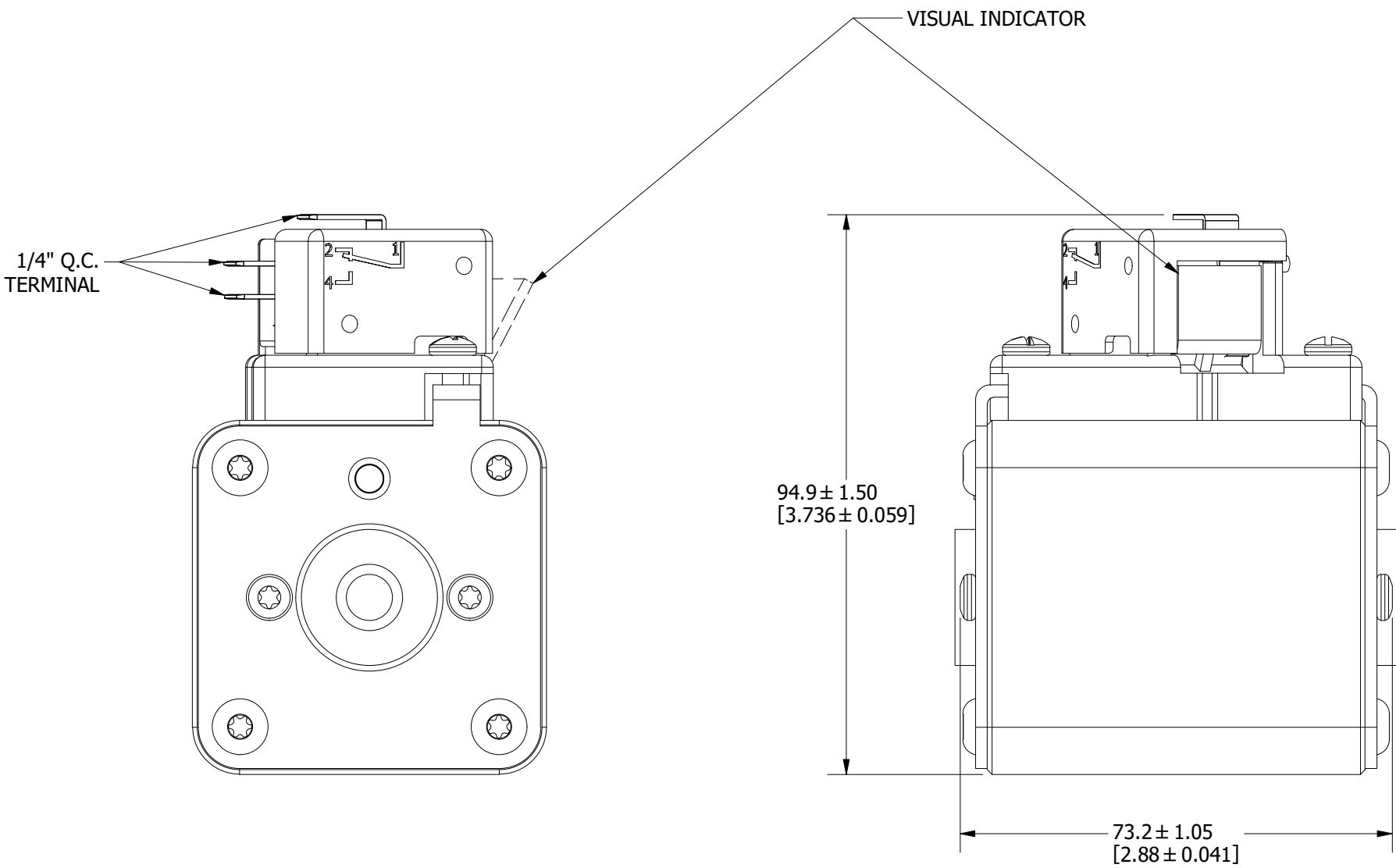
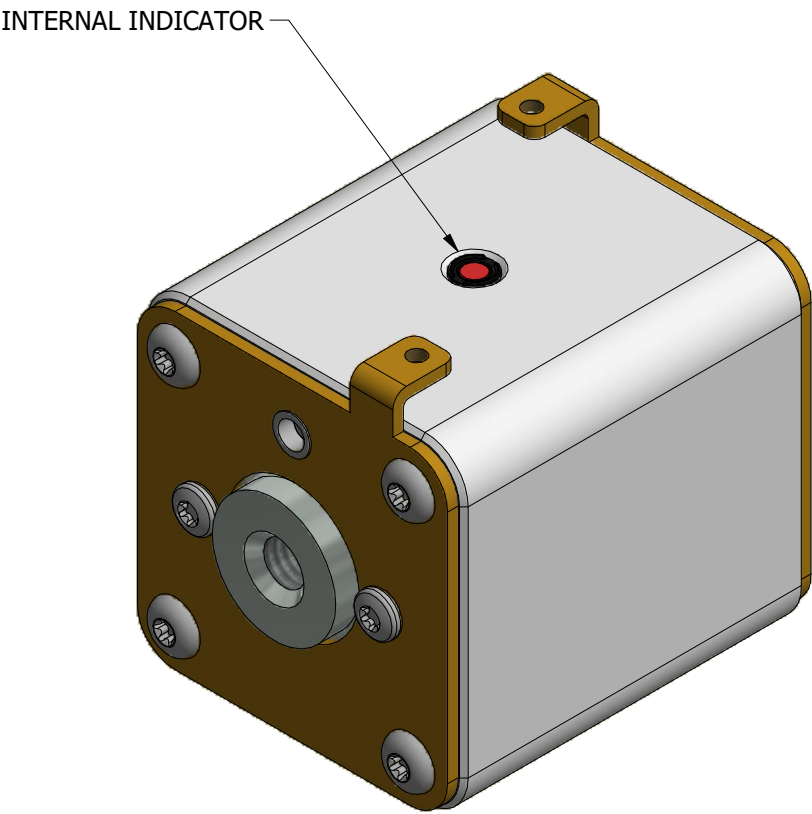
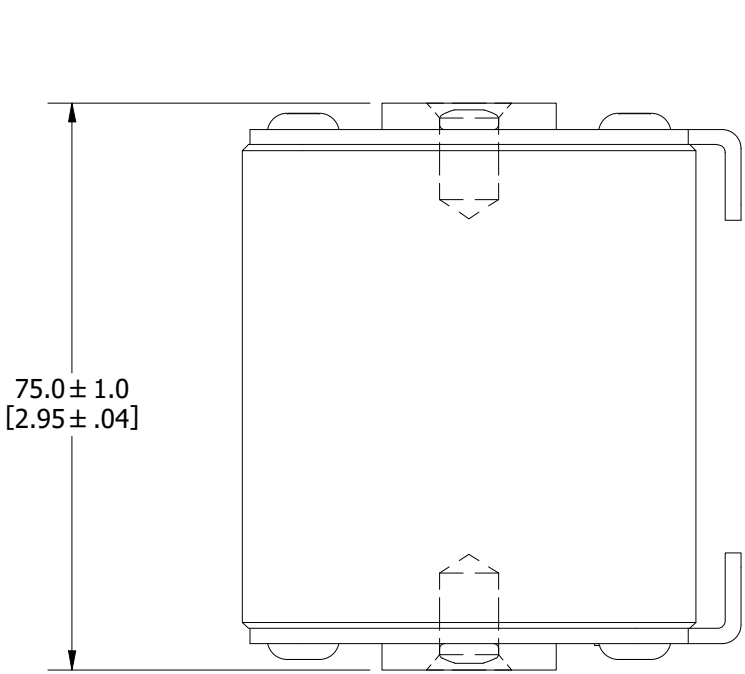
STUD TORQUE: 26-35Nm

REVISION		
REV	DATE	DESCRIPTION
A	03/16/2016	517373GCP - RELEASED -TV
B	10/19/2017	518344ECP - REVISE STUD SIZE NOTES -TV
C	8/30/18	519782ECP/D - CHG STUD TORQUE MRY
D	5/5/22	525161ECP/D - CHANGE HEIGHT, ADD TOLERANCES MRY
E	5/19/22	525232ECP/D - UPDATE LENGTH DIMENSION MRY
F	7/14/22	525433ECP/D - CHANGE HEIGHT DIMENSION FORMAT MRY
G	10/24/23	526836ECP/D - ADD VIEW W/O MICROSWITCH MRY

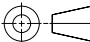

FUSE WITH MICROSWITCH



FUSE



FUSE WITH MICROSWITCH

●	DENOTES CRITICAL CHARACTERISTICS.		
CPK	DENOTES CPK DIMENSIONS, -MINIMUM CPK VALUE		
(ST)	DENOTES A CHARACTERISTIC THAT PROVIDES AN INDICATION OF PROCESS PERFORMANCE. PROCEDURE FOR MEASUREMENT AND TRACKING TO BE DEFINED IN LITTELFUSE INSPECTION INSTRUCTIONS.		
CP	DENOTES CP DIMENSIONS, -MINIMUM CP VALUE MUST BE WITHIN THE DIMENSIONAL LIMITATIONS SHOWN ON DRAWING AND INITIALLY LOCATED TO ALLOW FOR MAXIMUM TOOL LIFE.		
MATL SPEC		FINISH	
DRW TVESELSK	DATE 2/15/2016	SCALE NTS	FINISH GOOD WT GRAMS/PIECE
UNLESS OTHERWISE SPECIFIED, DIMENSIONS ARE IN MILLIMETERS, DIMENSIONS IN BRACKETS [ ] ARE INCHES DIMENSIONING AND DO NOT INCLUDE PLATING. TOLERANCING TO BE INTERPRETED IN ACCORDANCE WITH ANSI Y14.5M-1994			
3RD ANGLE PROJECTION			
			
TITLE			
SQUARE BODY 72 CASE SIZE - ENGLISH THREAD OUTLINE			
 <b>Littelfuse®</b> CHICAGO, ILLINOIS 60631		REVISION  G	DRWG NO. SHEET 1 OF 1  OL-PSR072FS0000



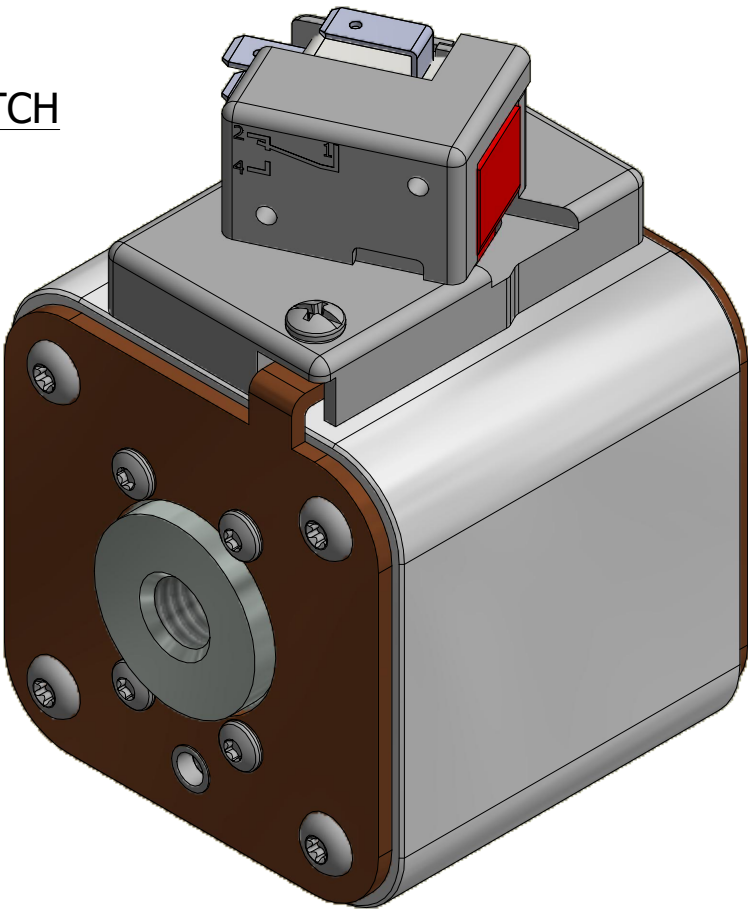
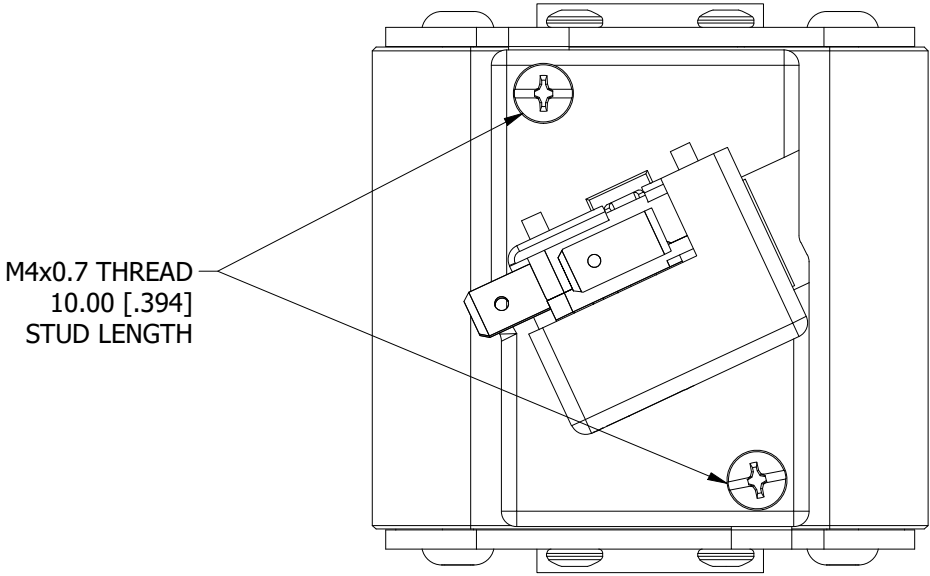
MOUNTING SPECS:

STUD SIZE: 1/2-13 UNC - 2B  $\nabla$ 13.0 [0.51]

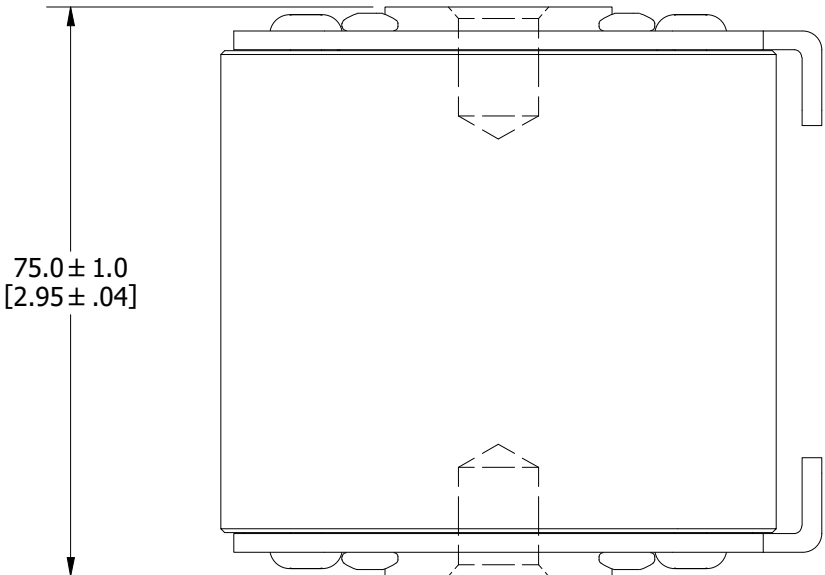
STUD TORQUE: 45-55Nm

REVISION		
REV	DATE	DESCRIPTION
A	01/10/2018	518685GCP - RELEASED -TV
B	8/30/18	519782ECP/D - CHG STUD TORQUE MRY
C	5/5/22	525161ECP/D - CHANGE HEIGHT, ADD TOLERANCES MRY
D	5/19/22	525232ECP/D - UPDATE LENGTH DIMENSION MRY
E	7/14/22	525433ECP/D - CHANGE HEIGHT DIMENSION FORMAT MRY
F	10/24/23	526836ECP/D - ADD VIEW W/O MICROSWITCH MRY

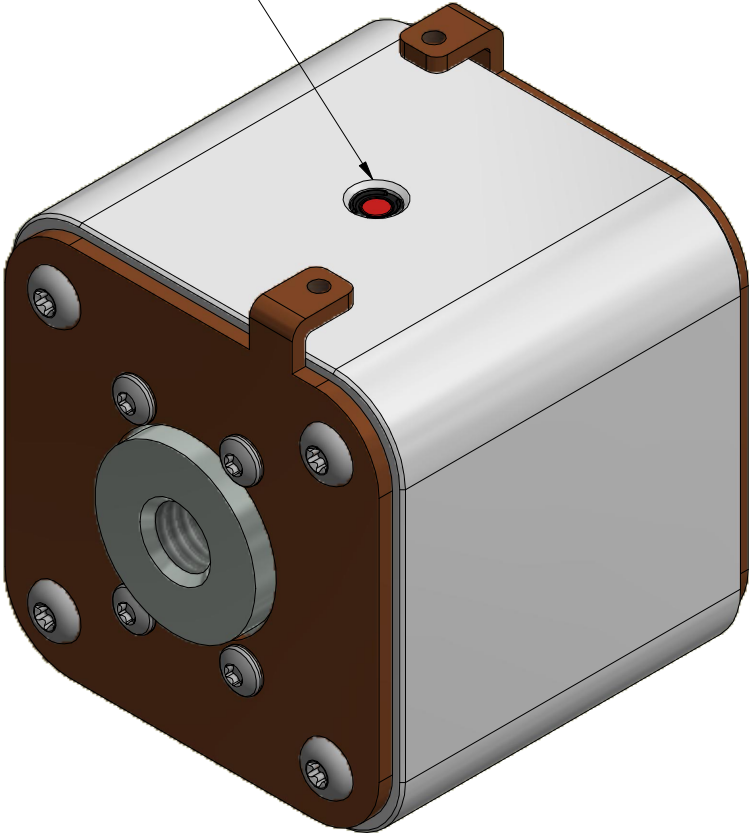
FUSE WITH MICROSWITCH



FUSE

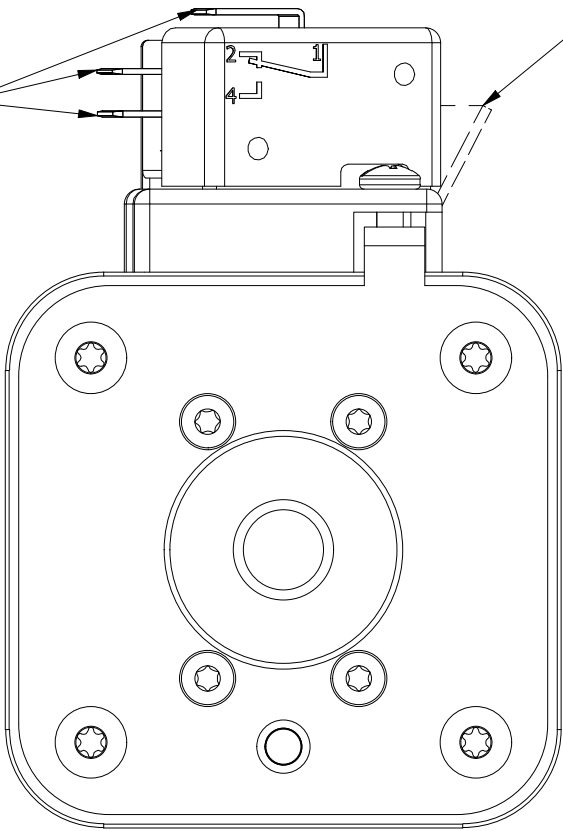


INTERNAL INDICATOR

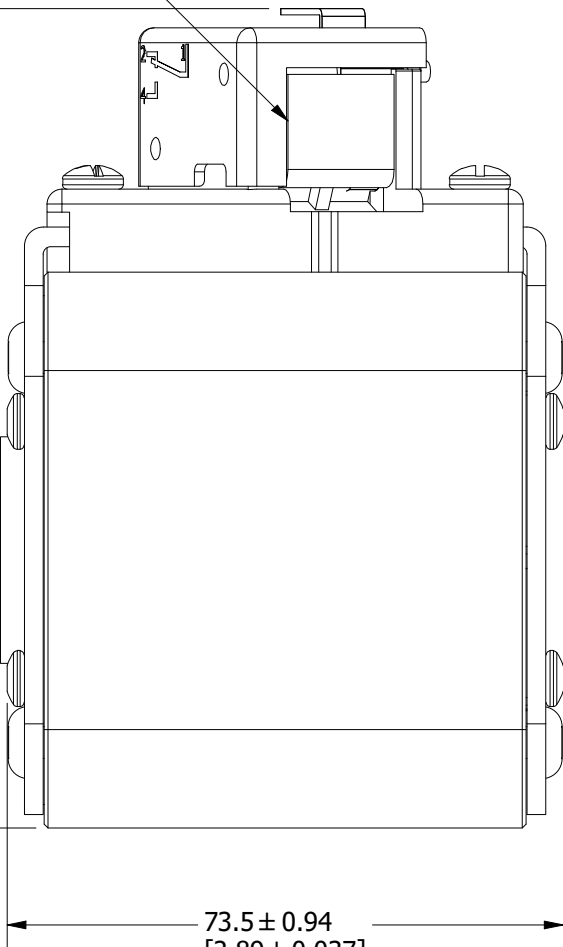


VISUAL INDICATOR

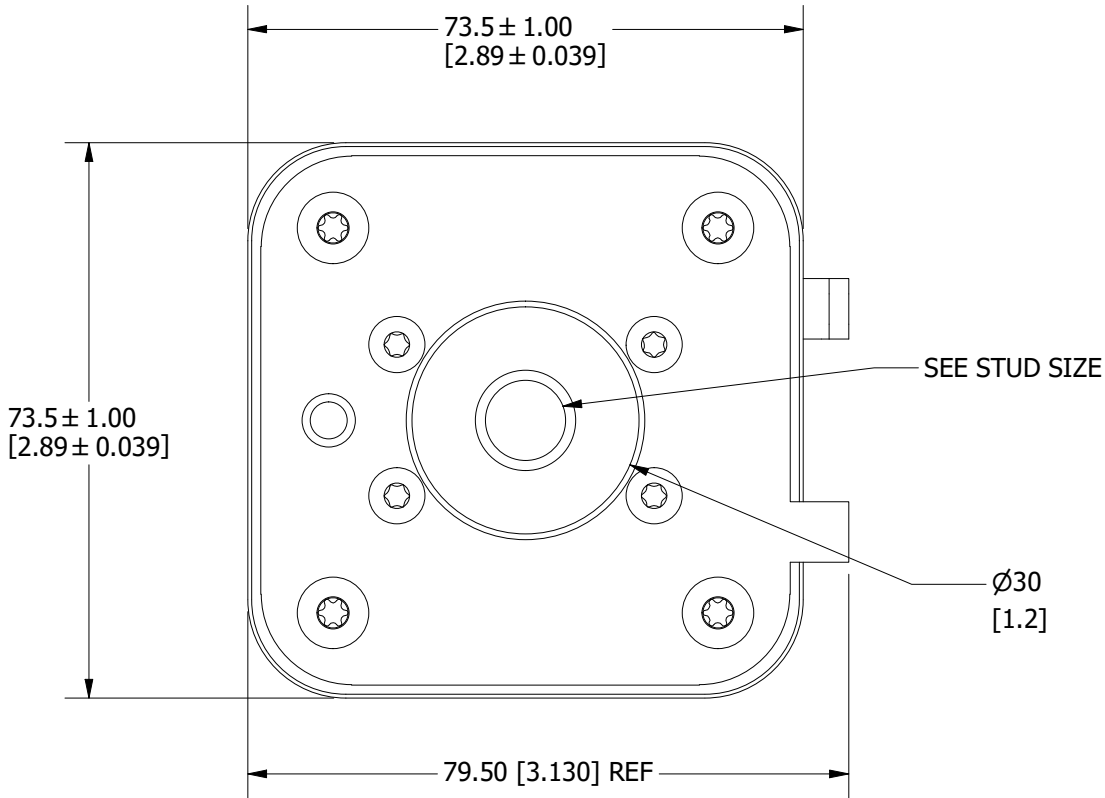
1/4" Q.C.  
TERMINAL

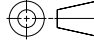



108.4 ± 1.50  
[4.27 ± 0.059]



FUSE WITH MICROSWITCH



●	DENOTES CRITICAL CHARACTERISTICS.		
CPK	DENOTES CPK DIMENSIONS, -MINIMUM CPK VALUE		
(ST)	DENOTES A CHARACTERISTIC THAT PROVIDES AN INDICATION OF PROCESS PERFORMANCE. PROCEDURE FOR MEASUREMENT AND TRACKING TO BE DEFINED IN LITTELFUSE INSPECTION INSTRUCTIONS.		
CP	DENOTES CP DIMENSIONS, -MINIMUM CP VALUE MUST BE WITHIN THE DIMENSIONAL LIMITATIONS SHOWN ON DRAWING AND INITIALLY LOCATED TO ALLOW FOR MAXIMUM TOOL LIFE.		
MATL SPEC		FINISH	
DRW TVESELSK	DATE 2/4/2016	SCALE NTS	FINISH GOOD WT GRAMS/PIECE
UNLESS OTHERWISE SPECIFIED, DIMENSIONS ARE IN MILLIMETERS, DIMENSIONS IN BRACKETS [ ] ARE INCHES DIMENSIONING AND DO NOT INCLUDE PLATING. TOLERANCING TO BE INTERPRETED IN ACCORDANCE WITH ANSI Y14.5M-1994			
3RD ANGLE PROJECTION 			
TITLE SQUARE BODY 73 CASE - ENGLISH THREAD OUTLINE			
 <b>Littelfuse®</b> CHICAGO, ILLINOIS 60631		REVISION  F	DRWG NO.  OL-PSR073FS0000
			SHEET 1 OF 1