

Arc-Flash Detection

PGA-LS10 Series

Point Sensor



Description

The PGA-LS10 series arc-detection point sensors are capable of detecting light from every angle in front of them due to the shape of the cylindrical lens on the front of the sensor. These sensors are installed and positioned in switchboards to give them direct line of sight to all powered connections where an arc could develop. The detection radius is dependent on the arc power. The PGA-LS10 has a detection area of a 2 m (7 ft) half-sphere for arcs of 3 kA or more. These point sensors and arc-flash relays provide superior protection against the damaging effects of arc flashes and improve the lifespan of electrical equipment as well as the protection of personnel.

Features & Benefits

FEATURES	BENEFITS
Direct line of sight	Improves detection capability
Cylindrical lens shape	Enhances arc detection

Applications

- For use with Littelfuse arc-flash relays

Specifications

Type	Point sensor
Detection Zone	180 x 360° (half sphere)
Output	0–35 mA
Electrical Cable	Shielded 3-wire 20 AWG (0.5mm ²) electrical cable
Factory Cable Length	10 m (33 ft) electrical cable
Max. Elec. Cable Length	50 m (164 ft)
Sensor Check	Built-in LED for visual feedback
Dimensions	32 x 52 x 24 mm (1.3 x 2.0 x 0.9 in)
Enclosure	IP 30

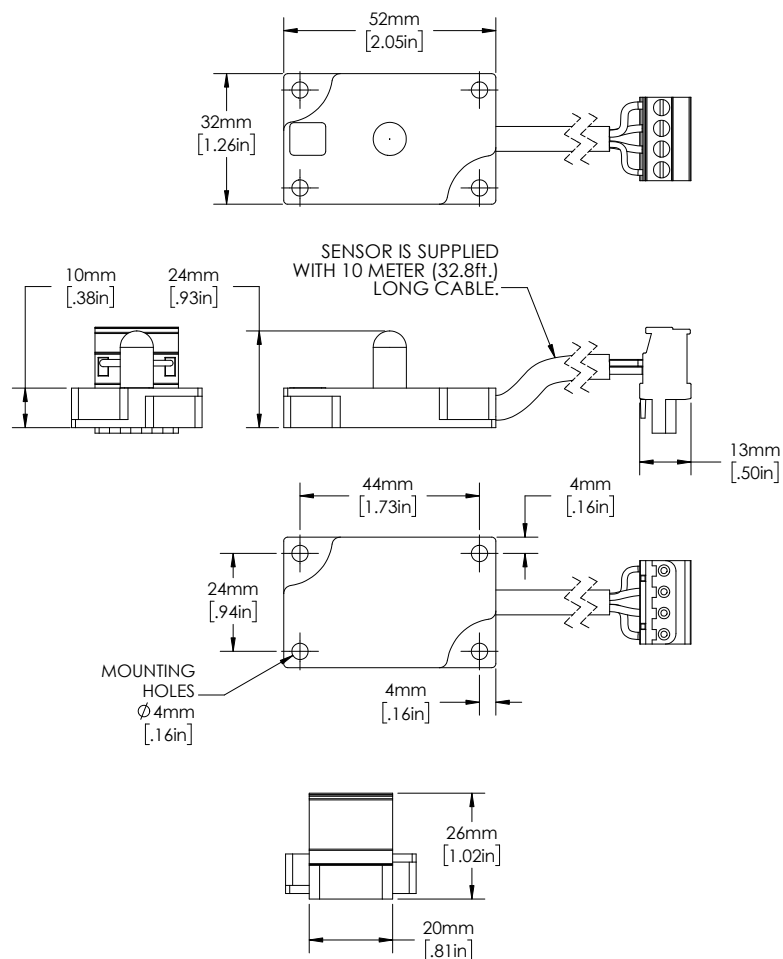
Ordering Information

ORDERING NUMBER	DESCRIPTION
PGA-LS10	Point sensor with 10 m of cable length and connector block

Arc-Flash Detection

PGA-LS10 Series

Dimensions Millimeters (inches)



Disclaimer Notice – Information furnished is believed to be accurate and reliable. However, users should independently evaluate the suitability of and test each product selected for their own applications. Littelfuse products are not designed for, and may not be used in, all applications. Read complete Disclaimer Notice at www.littelfuse.com/product-disclaimer.