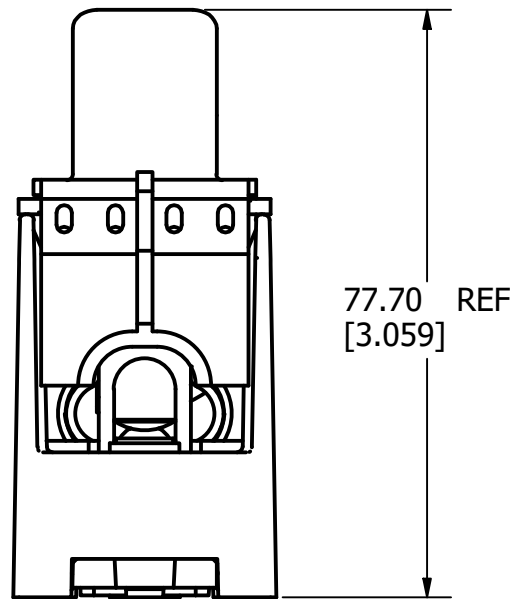
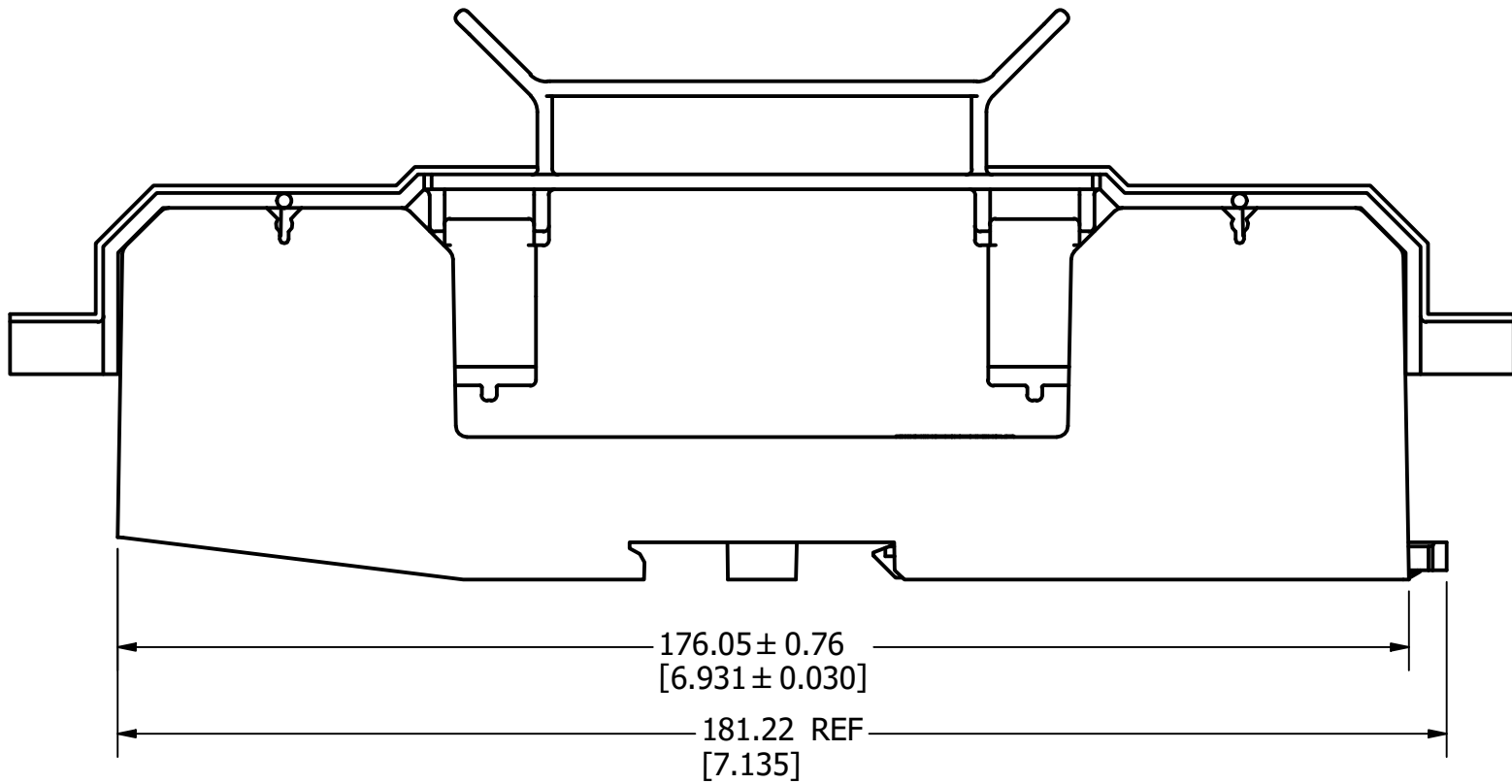
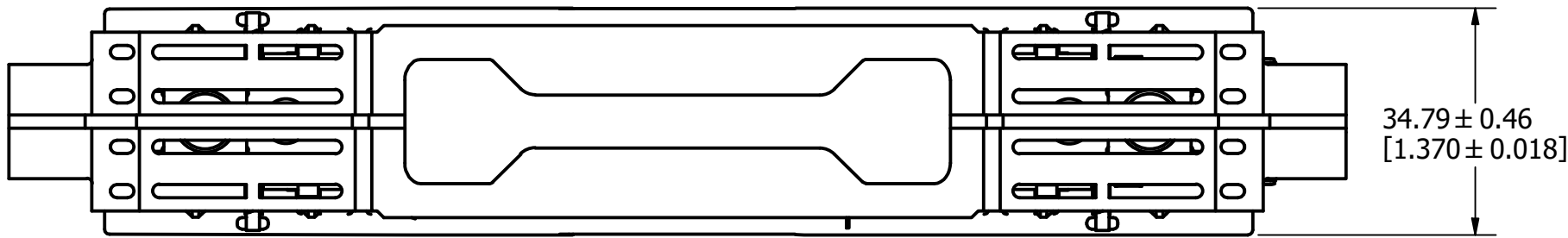
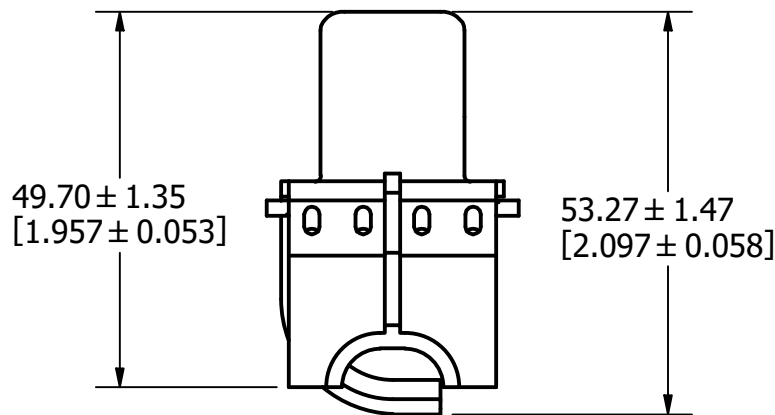
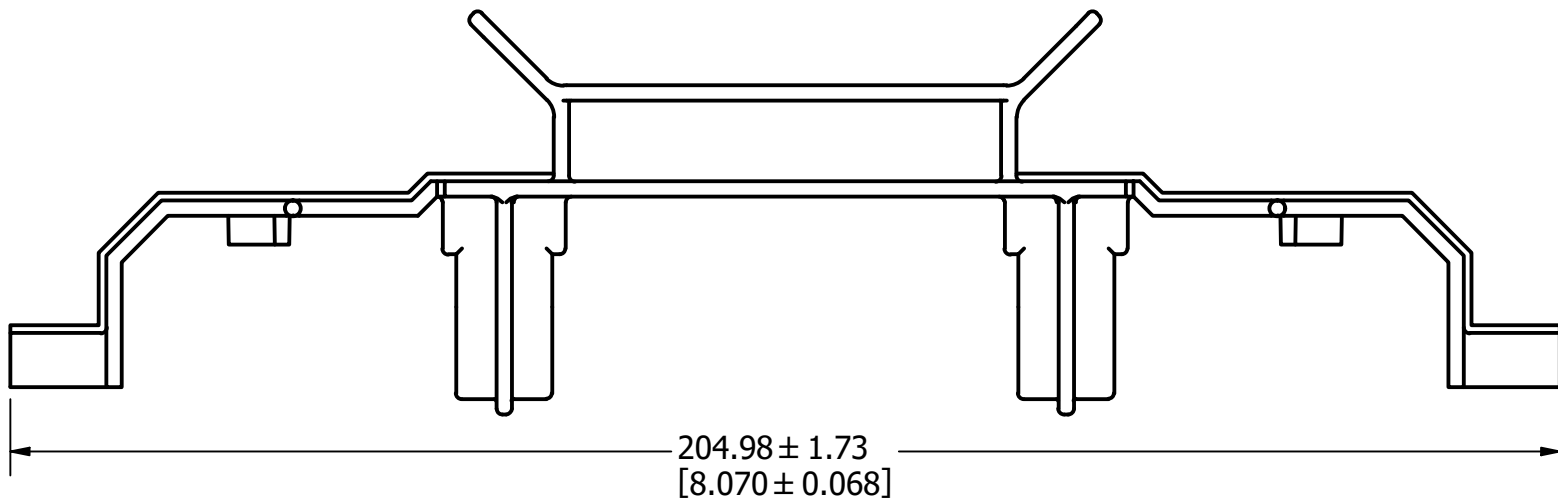
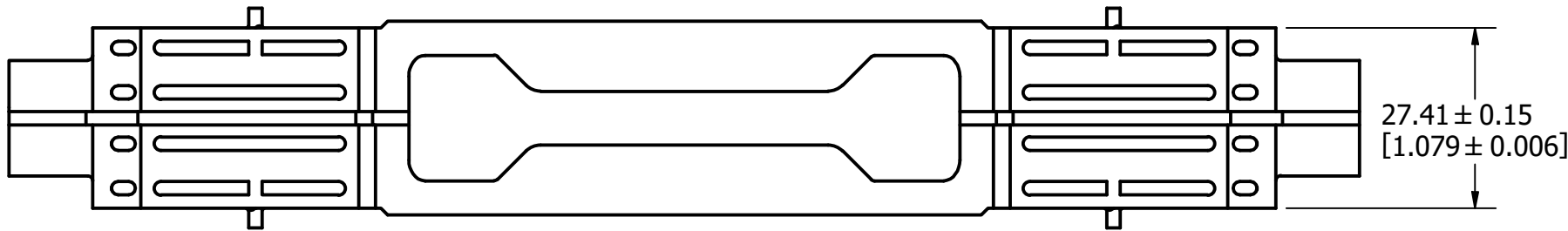


FUSE BLOCK & COVER ASSEMBLY: LFXV15060-BC

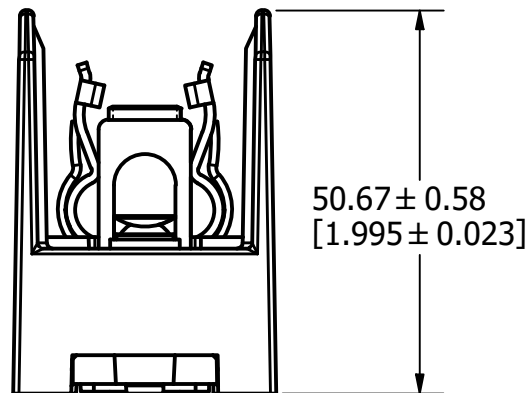
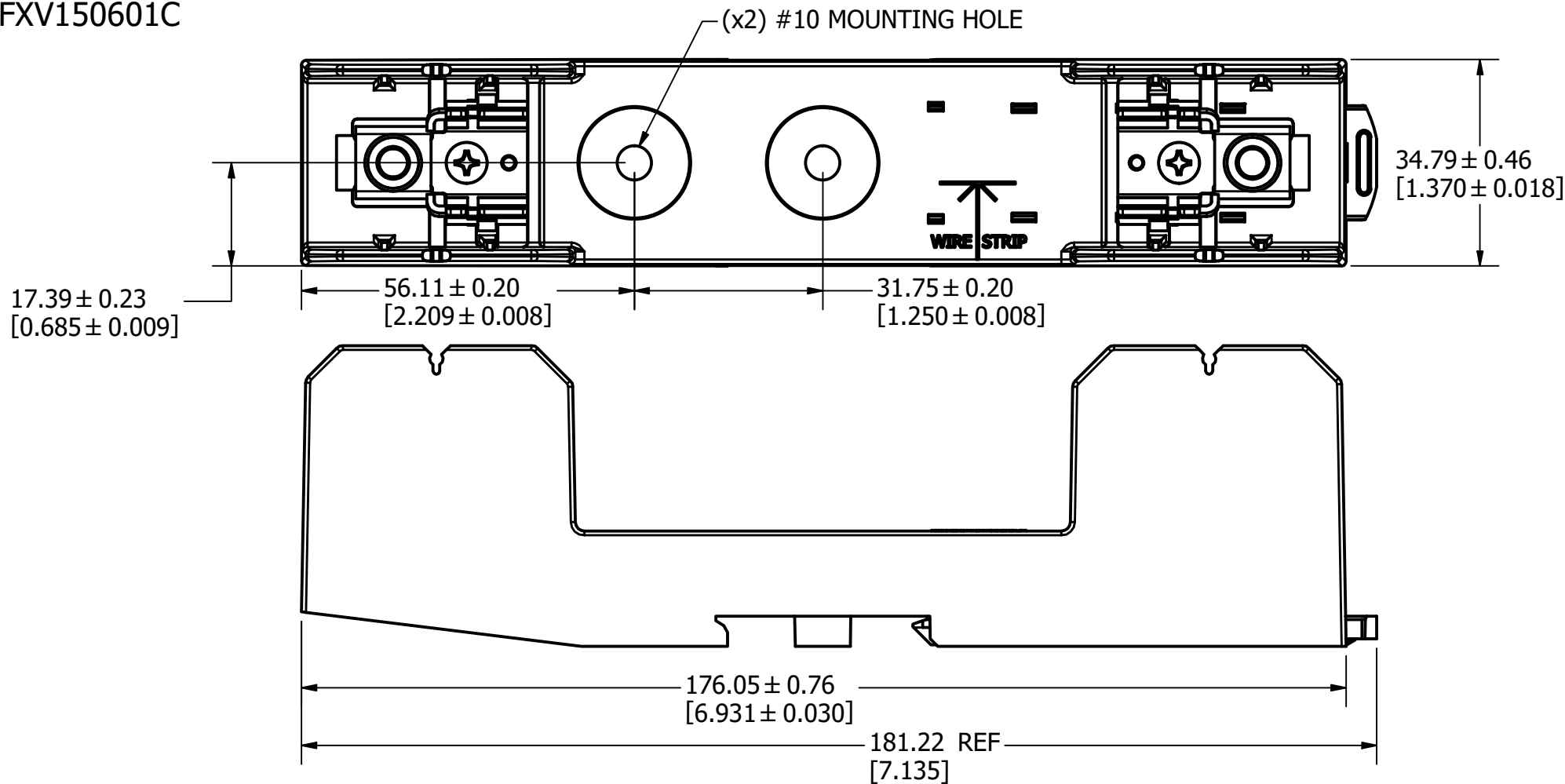
REVISION		
REV	DATE	DESCRIPTION
A	9/24/21	524234GCP - RELEASE MRY
B	11/9/21	524457ECP/D - UPDATE LFXV150601C DIMENSIONS MRY
C	5/23/22	525242ECP/D - ADD TOLERANCES MRY

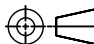



FUSE BLOCK COVER: LFXV15060FBC



FUSE BLOCK: LFXV150601C



<S>	CRITICAL CHARACTERISTIC FOR PART SAFETY/COMPLIANCE		
●	DENOTES CRITICAL CHARACTERISTICS.		
CPK	DENOTES CPK DIMENSIONS, -MINIMUM CPK VALUE		
(ST)	DENOTES A CHARACTERISTIC THAT PROVIDES AN INDICATION OF PROCESS PERFORMANCE. PROCEDURE FOR MEASUREMENT AND TRACKING TO BE DEFINED IN LITTELFUSE INSPECTION INSTRUCTIONS.		
CP	DENOTES CP DIMENSIONS, -MINIMUM CP VALUE MUST BE WITHIN THE DIMENSIONAL LIMITATIONS SHOWN ON DRAWING AND INITIALLY LOCATED TO ALLOW FOR MAXIMUM TOOL LIFE.		
MATL SPEC		FINISH	
DRW myork	DATE 9/24/2021	SCALE NTS	FINISH GOOD WT GRAMS/PIECE
UNLESS OTHERWISE SPECIFIED, DIMENSIONS ARE IN MILLIMETERS, DIMENSIONS IN BRACKETS [] ARE INCHES DIMENSIONING AND DO NOT INCLUDE PLATING. TOLERANCING TO BE INTERPRETED IN ACCORDANCE WITH ANSI Y14.5M-1994			
3RD ANGLE PROJECTION			
			
TITLE LFXV15060-BC OUTLINE			
 Littelfuse® CHICAGO, ILLINOIS 60631		REVISION C	DRWG NO. OL-LFXV15060-BC
			SHEET 1 OF 1