

LCP Fused Coordination Panel



The Littelfuse Coordination Panel provides a simple, time-saving solution for circuits that require selective coordination. Emergency Systems (NEC® 700.27), Legally Required Standby Systems (NEC® 701.18), Critical Operations Power Systems (NEC® 708.54), Elevators (NEC® 620.62), and Healthcare Essential Electrical Systems (NEC® 517.26) are required by the NEC® to be selectively coordinated. This UL Listed solution saves time, money and increases safety by minimizing system downtime.

Specifications

Voltage Ratings:	120/208, 120/240, 277/480 VAC
Main Bus Rating:	200 Amperes
Conductor Terminals:	6 AWG - 300 kcmil
SCCR:	100,000A Max*
UL Listed:	UL 67 Panelboards and UL 50 Enclosures

Standard Features:

- 3 Different Voltage Ratings
- Copper Bus
- Branch Circuit Breakers Coordinated w/ Class CC Fuses
- Class CC Fuse Holders have Built-In Blown Fuse Indication
- Multiple NEMA Enclosures
- Ground and Neutral Bars
- 12, 18, 24, 30, 36, 42 Circuit Panels
- Tens of Thousands of Design Options
- For Additional Configurations, contact 1-800-TEC-FUSE

For a step-by-step explanation of how to choose the best options for your application and complete a panel schedule, please visit www.littelfuse.com/lcp

Customizable Options:

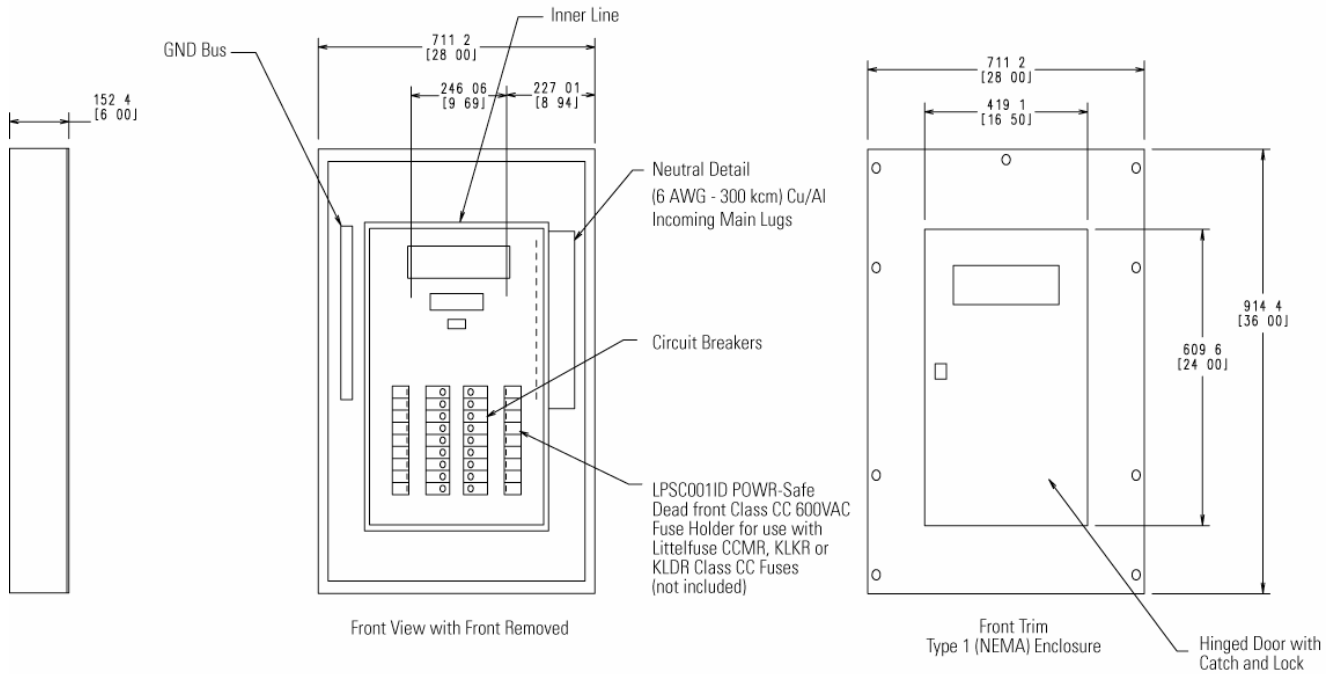
Circuits	Voltage	Main Circuit Breaker	Neutral Rating	Panel Mounting	Panel Door	Fuse Holders	Feeder Circuit Breakers	Panel Feed	Panel Lugs	Enclosure Rating
12	120/208V 3P, 4W	200A MLO	100%	Surface	Standard	30A Class CC	1 Pole: 10A-60A	Top	None	NEMA 1
18	120/240V 1P, 3W	60A-70A MCB	200%	Flush	Door-in-door	60A Class J	2 Pole: 10A-60A	Bottom	Sub-Feed (MLO panels)	NEMA 3R
24	277/480V 3P, 4W						3 Pole: 10A-60A		Feed-Through	
30										
36										
42										

*Fuses quoted separately to meet panel specification

For additional assistance, contact the Littelfuse TECH LINE

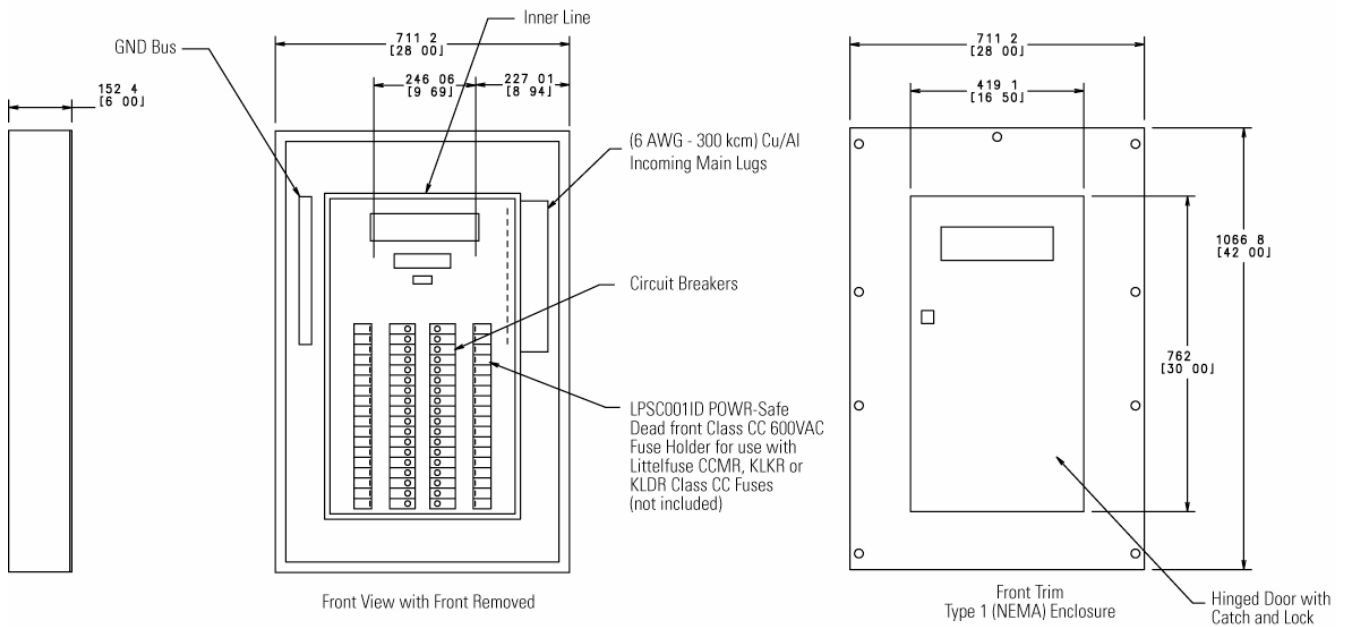
Standard Coordination Panel with 12, 18, 24, 30 circuits

Dimensions in mm [inches]



Standard Coordination Panel with 36, 42 circuits

Dimensions in mm [inches]



*** The following current-limiting fuses must be used directly upstream for 100ka SCCR:**

1. 120/208 Volt Panels – LLNRK 100A max, JTD 200A max, or JLLN 200A max
2. 120/240 Volt Panels – LLSRK 200A max, JTD 200A max, or JLLS 200A max
3. 277/480 Volt Panels – LLSRK 200A max, JTD 200A max, or JLLS 200A max