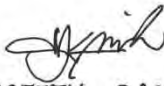




ICP Test Report Certification Packet

Company name: Littelfuse, Inc.
Product Series: Inrush Protector
Product #: 399xxxxxxx Series
Issue Date: Spetember 5, 2011

It is hereby certified by Littelfuse, Inc. that there is neither RoHS (EU Directive 2002/95/EC)-restricted substance nor such use, for materials to be used for unit parts, for packing/packaging materials, and for additives and the like in the manufacturing processes. In addition, it is hereby reported to you that the parts and sub-materials, the materials to be used for unit parts, the packing/packaging materials, and the additives and the like in the manufacturing processes, are all composed of the following components.

Issued by: 
KRISTEEN BACILA

<Global EHS Engineer>

(1) Parts, sub-materials and unit parts

This document covers the Inrush Protector RoHS-Compliant series products manufactured by Littelfuse, Inc.

< Raw Materials Used
Please see Table 1

(2) The ICP data on all measurable substances

Please see appropriate pages as identified in Table 1

Remarks :



Table 1: List of Raw Materials covered by this report

Total Parts	Raw Material Part Number	Raw Material Description	Page(s)
1	DRCU	Melting Wire	3-12
2	LOZZ194 (692213)	Solder Wire	13-17
3	910-017 (T6626)	Plastic Cap	18-23
4	867-002 (G3813)	Socket with Pin	24-30
5	GLZZxxx (6481xx)	Yarn	31-36

Test Report

No. : CE/2011/10411A Date : 2011/01/11 Page : 1 of 10

ELSCHUKOM ELEKTROSCHUTZKOMPONENTENBAU GMBH
GEWERBESTRASSE 87, D-98669 VEILSDORF, GERMANY



The following sample(s) was/were submitted and identified by/on behalf of the client as :

Sample Description : COPPER CLAD & COPPER ALLOY WIRES
Style/Item No. : PLEASE REFER TO PAGE 5
Country of Origin : GERMANY
Sample Receiving Date : 2011/01/04
Testing Period : 2011/01/04 TO 2011/01/11

=====
Test Result(s) : Please refer to next page(s).



Chenyu Kung / Operation Manager
Signed for and on behalf of
SGS TAIWAN LTD.
Chemical Laboratory – Taipei

Unless otherwise stated the results shown in this test report refer only to the sample(s) tested. This test report cannot be reproduced, except in full, without prior written permission of the Company. 除非另有說明，此報告單僅針對測試的樣品負責。本報告單經本公司書面許可，不得任意複製。
This document is issued by the Company subject to its General Conditions of Service printed overleaf, available on request or accessible at www.sgs.com/terms_and_conditions.htm and, for electronic format documents, subject to Terms and Conditions for Electronic Documents at www.sgs.com/terms_e-document.htm. Attention is drawn to the limitation of liability, indemnification and jurisdiction issues defined therein. Any holder of this document is advised that information contained hereon reflects the Company's findings at the time of its intervention only and within the limits of Client's instructions, if any. The Company's sole responsibility is to its Client and this document does not exonerate parties to a transaction from exercising all their rights and obligations under the transaction documents. This document cannot be reproduced except in full, without prior written approval of the Company. Any unauthorized alteration, forgery or falsification of the content or appearance of this document is unlawful and offenders may be prosecuted to the fullest extent of the law.

Test Report

No. : CE/2011/10411A Date : 2011/01/11 Page : 2 of 10

ELSCHUKOM ELEKTROSCHUTZKOMPONENTENBAU GMBH
GEWERBESTRASSE 87, D-98669 VEILSDORF, GERMANY



Test Result(s)

PART NAME No.1 : MIXED ALL COLOR METAL WIRE (INCLUDING THE PLATING LAYER) (11 KINDS)

Test Item (s):	Unit	Method	MDL	Result
				No.1
Cadmium (Cd)	mg/kg	With reference to IEC 62321: 2008 and performed by ICP-AES.	2	n.d.
Lead (Pb)	mg/kg	With reference to IEC 62321: 2008 and performed by ICP-AES.	2	n.d.
Mercury (Hg)	mg/kg	With reference to IEC 62321: 2008 and performed by ICP-AES.	2	n.d.
Hexavalent Chromium Cr(VI) by Spot test / boiling water extraction	**	With reference to IEC 62321: 2008 and performed by Spot test / boiling water extraction Method. (See Note 5)	0.02mg/kg with 50 cm ² surface area	Negative
Perfluorooctane sulfonates (PFOS) PFOS – Acid PFOS – Metal Salt PFOS – Amide	mg/kg	With reference to US EPA 3540C: 1996 method for PFOS Content. Analysis was performed by LC/MS.	10	n.d.
PFOA (CAS No.: 000335-67-1)	mg/kg	With reference to US EPA 3540C: 1996 method for PFOA Content. Analysis was performed by LC/MS.	10	n.d.
Halogen				
Halogen-Fluorine (F) (CAS No.: 014762-94-8)	mg/kg	With reference to BS EN 14582:2007. Analysis was performed by IC.	50	n.d.
Halogen-Chlorine (Cl) (CAS No.: 022537-15-1)			50	n.d.
Halogen-Bromine (Br) (CAS No.: 010097-32-2)			50	n.d.
Halogen-Iodine (I) (CAS No.: 014362-44-8)			50	n.d.

Unless otherwise stated the results shown in this test report refer only to the sample(s) tested. This test report cannot be reproduced, except in full, without prior written permission of the Company. 除非另有說明，此報告僅與標註之樣品有關。本報告未經本公司書面許可，不得部份複製。

This document is issued by the Company subject to its General Conditions of Service printed overleaf, available on request or accessible at www.sgs.com/terms_and_conditions.htm and for electronic format documents, subject to Terms and Conditions for Electronic Documents at www.sgs.com/terms_e-document.htm. Attention is drawn to the limitation of liability, indemnification and jurisdiction issues defined therein. Any holder of this document is advised that information contained hereon reflects the Company's findings at the time of its intervention only and within the limits of Client's instructions, if any. The Company's sole responsibility is to its Client and this document does not exonerate parties to a transaction from exercising all their rights and obligations under the transaction documents. This document cannot be reproduced except in full, without prior written approval of the Company. Any unauthorized alteration, forgery or falsification of the content or appearance of this document is unlawful and offenders may be prosecuted to the fullest extent of the law.

Test Report

No. : CE/2011/10411A Date : 2011/01/11 Page : 3 of 10

ELSCHUKOM ELEKTROSCHUTZKOMPONENTENBAU GMBH
 GEWERBESTRASSE 87, D-98669 VEILSDORF, GERMANY



Test Item (s):	Unit	Method	MDL	Result
				No.1
Sum of PBBs	mg/kg	With reference to IEC 62321: 2008 and performed by GC/MS.	-	n.d.
Monobromobiphenyl			5	n.d.
Dibromobiphenyl			5	n.d.
Tribromobiphenyl			5	n.d.
Tetrabromobiphenyl			5	n.d.
Pentabromobiphenyl			5	n.d.
Hexabromobiphenyl			5	n.d.
Heptabromobiphenyl			5	n.d.
Octabromobiphenyl			5	n.d.
Nonabromobiphenyl			5	n.d.
Decabromobiphenyl			5	n.d.
Sum of PBDEs			-	n.d.
Monobromodiphenyl ether			5	n.d.
Dibromodiphenyl ether			5	n.d.
Tribromodiphenyl ether			5	n.d.
Tetrabromodiphenyl ether			5	n.d.
Pentabromodiphenyl ether			5	n.d.
Hexabromodiphenyl ether			5	n.d.
Heptabromodiphenyl ether			5	n.d.
Octabromodiphenyl ether			5	n.d.
Nonabromodiphenyl ether			5	n.d.
Decabromodiphenyl ether			5	n.d.

Unless otherwise stated the results shown in this test report refer only to the sample(s) tested. This test report cannot be reproduced, except in full, without prior written permission of the Company. 除非另有說明，此報告的結果對測試的樣品負責。本報告未經本公司書面許可，不可部份複製。

This document is issued by the Company subject to its General Conditions of Service printed overleaf, available on request or accessible at www.sgs.com/terms_and_conditions.htm and for electronic format documents, subject to Terms and Conditions for Electronic Documents at www.sgs.com/terms_e-document.htm. Attention is drawn to the limitation of liability, indemnification and jurisdiction issues defined therein. Any holder of this document is advised that information contained hereon reflects the Company's findings at the time of its intervention only and within the limits of Client's instructions, if any. The Company's sole responsibility is to its Client and this document does not exonerate parties to a transaction from exercising all their rights and obligations under the transaction documents. This document cannot be reproduced except in full, without prior written approval of the Company. Any unauthorized alteration, forgery or falsification of the content or appearance of this document is unlawful and offenders may be prosecuted to the fullest extent of the law.

Test Report

No. : CE/2011/10411A Date : 2011/01/11 Page : 4 of 10

ELSCHUKOM ELEKTROSCHUTZKOMPONENTENBAU GMBH
GEWERBESTRASSE 87, D-98669 VEILSDORF, GERMANY



Note : 1. mg/kg = ppm; 0.1wt% = 1000ppm

2. n.d. = Not Detected

3. MDL = Method Detection Limit

4. " - " = Not Regulated

5. Spot-test:

Negative = Absence of Cr(VI) coating / surface layer,

Positive = Presence of Cr(VI) coating / surface layer;

(The tested sample should be further verified by boiling-water-extraction method if the spot test result cannot be confirmed.)

Boiling-water-extraction:

Negative = Absence of Cr(VI) coating / surface layer.

Positive = Presence of Cr(VI) coating / surface layer;

the detected concentration in boiling-water-extraction solution is equal or greater than 0.02 mg/kg with 50 cm² sample surface area.

6. ** = Qualitative analysis (No Unit)

7. The sample(s) was/were analyzed on behalf of the applicant as mixing sample in one testing.

The above result(s) was/were only given as the informality value.

PFOS Reference Information : Directive 2006/122/EC

(1) May not be placed on the market or used as a substance or constituent of preparations in a concentration equal to or higher than 0.005 % by mass.

(2) May not be placed on the market in semi-finished products or articles, or parts thereof, if the concentration of PFOS is equal to or higher than 0.1 % by mass calculated with reference to the mass of structurally or microstructurally distinct parts that contain PFOS or, for textiles or other coated materials, if the amount of PFOS is equal to or higher than 1µg/m² of the coated material.

Unless otherwise stated the results shown in this test report refer only to the sample(s) tested. This test report cannot be reproduced, except in full, without prior written permission of the Company. 除非另有說明，此報告的結果對測試的樣品負責。本報告未經本公司書面許可，不可全部複製。

This document is issued by the Company subject to its General Conditions of Service printed overleaf, available on request or accessible at www.sgs.com/terms_and_conditions.htm and, for electronic format documents, subject to Terms and Conditions for Electronic Documents at www.sgs.com/terms_e-document.htm. Attention is drawn to the limitation of liability, indemnification and jurisdiction issues defined therein. Any holder of this document is advised that information contained hereon reflects the Company's findings at the time of its intervention only and within the limits of Client's instructions, if any. The Company's sole responsibility is to its Client and this document does not exonerate parties to a transaction from exercising all their rights and obligations under the transaction documents. This document cannot be reproduced except in full, without prior written approval of the Company. Any unauthorized alteration, forgery or falsification of the content or appearance of this document is unlawful and offenders may be prosecuted to the fullest extent of the law.

Test Report

No. : CE/2011/10411A Date : 2011/01/11 Page : 5 of 10

ELSCHUKOM ELEKTROSCHUTZKOMPONENTENBAU GMBH
GEWERBESTRASSE 87, D-98669 VEILSDORF, GERMANY



Style/Item No. :

- (1) 101. 0177. 0 - - -
COPPER TIN ALLOY WIRE CuSn6
- (2) 101. 0183. 0 - - -
EWN 02.01. - COPPER CLAD WIRE - ELCON 30
- (3) 101. 0172. 0 - - -
EWN 02.01. - COPPER CLAD STEEL WIRE - ELCON F
- (4) 101. 0181. 0 - - -
EWN 02.01. - COPPER CLAD IRON-NICKEL-ALLOY WIRE - ELCON D
- (5) 101.0132.- - - -
EWN 04.02. - SILVER COPPER ALLOY WIRE - AgCu50
- (6) 101.0134.0 - - -
EWN 03.06. - SILVER COPPER ALLOY WIRE - AgCu90
- (7) 101.0171.0 - - -
EWN 02.01. - COPPER WIRE - Cu99.9%
- (8) 101.0135.- - - -
SILVER COPPER ALLOY WIRE - Ag72Cu28
- (9) 101.0157.0 - - -
EWN12.02. - COPPER - ZINC - ALLOY WIRE - Cu80 Zn20
- (10) 101.0136.- - - -
SILVER COPPER ALLOY WIRE - Ag45Cu45 (AgCu55)
- (11) 101-- 064.- - - -
COPPER PLATED, BRASS PLATED SPRING-STEEL WIRE - FST, Cu --%

Unless otherwise stated the results shown in this test report refer only to the sample(s) tested. This test report cannot be reproduced except in full without prior written permission of the Company. 除非另有說明，此報告中所有測試結果均與本公司無涉。本報告未經本公司正式許可，不可隨意複製。
This document is issued by the Company subject to its General Conditions of Service printed overleaf, available on request or accessible at www.sgs.com/terms_and_conditions.htm and for electronic format documents, subject to Terms and Conditions for Electronic Documents at www.sgs.com/terms_e-document.htm. Attention is drawn to the limitation of liability, indemnification and jurisdiction issues defined therein. Any holder of this document is advised that information contained hereon reflects the Company's findings at the time of its intervention only and within the limits of Client's instructions, if any. The Company's sole responsibility is to its Client and this document does not exonerate parties to a transaction from exercising all their rights and obligations under the transaction documents. This document cannot be reproduced except in full, without prior written approval of the Company. Any unauthorized alteration, forgery or falsification of the content or appearance of this document is unlawful and offenders may be prosecuted to the fullest extent of the law.

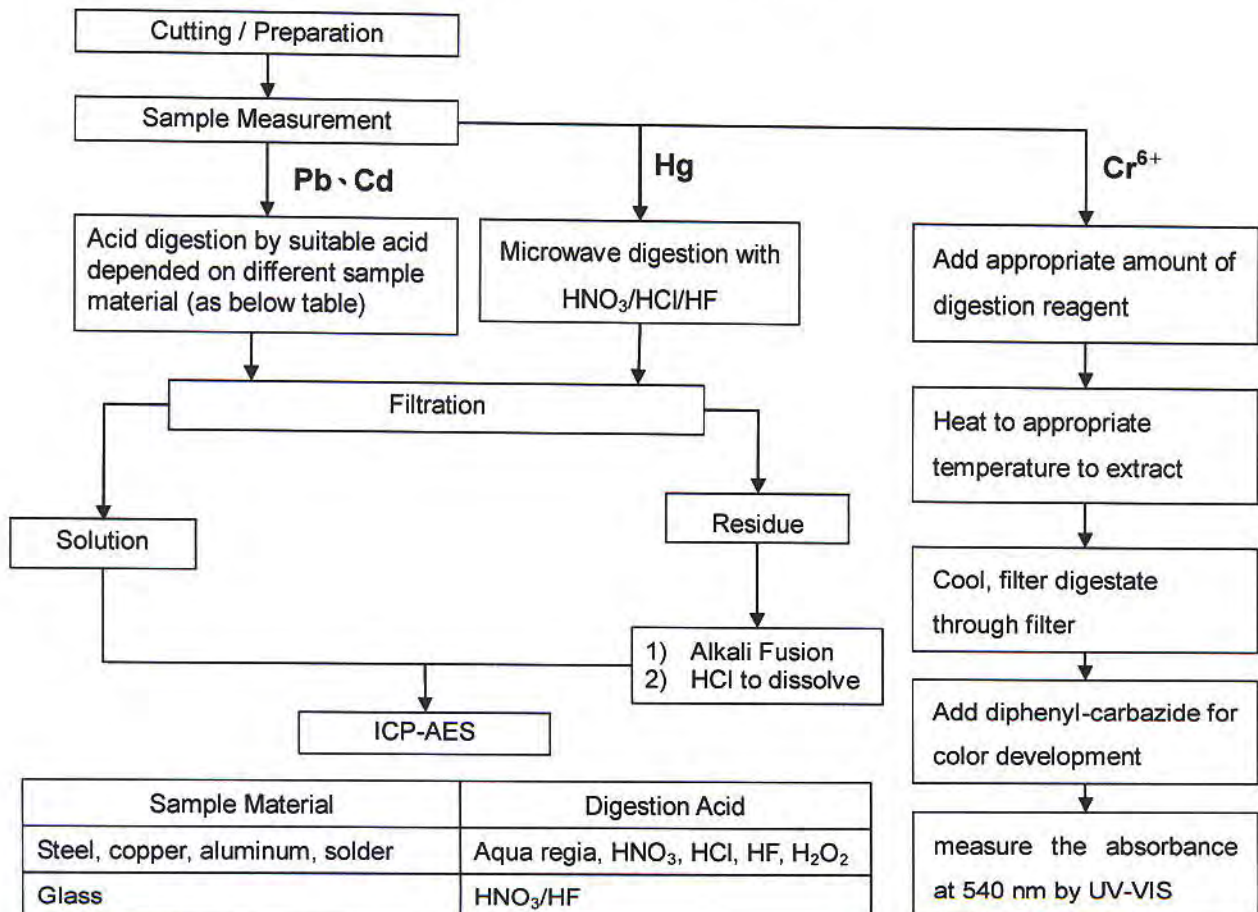
Test Report

No. : CE/2011/10411A Date : 2011/01/11 Page : 6 of 10

ELSCHUKOM ELEKTROSCHUTZKOMPONENTENBAU GMBH
GEWERBESTRASSE 87, D-98669 VEILSDORF, GERMANY



- 1) These samples were dissolved totally by pre-conditioning method according to below flow chart. (Cr⁶⁺ test method excluded)
- 2) Name of the person who made measurement: Climbgreat Yang
- 3) Name of the person in charge of measurement: Troy Chang



Sample Material	Digestion Acid
Steel, copper, aluminum, solder	Aqua regia, HNO ₃ , HCl, HF, H ₂ O ₂
Glass	HNO ₃ /HF
Gold, platinum, palladium, ceramic	Aqua regia
Silver	HNO ₃
Plastic	H ₂ SO ₄ , H ₂ O ₂ , HNO ₃ , HCl
Others	Any acid to total digestion

Unless otherwise stated the results shown in this test report refer only to the sample(s) tested. This test report cannot be reproduced, except in full, without prior written permission of the Company. 除非另有說明，此報告中與測試的樣品負責。本報告未經本公司書面許可，不可部份複製。

This document is issued by the Company subject to its General Conditions of Service printed overleaf, available on request or accessible at www.sgs.com/terms_and_conditions.htm and for electronic format documents, subject to Terms and Conditions for Electronic Documents at www.sgs.com/terms_e-document.htm. Attention is drawn to the limitation of liability, indemnification and jurisdiction issues defined therein. Any holder of this document is advised that information contained hereon reflects the Company's findings at the time of its intervention only and within the limits of Client's instructions, if any. The Company's sole responsibility is to its Client and this document does not exonerate parties to a transaction from exercising all their rights and obligations under the transaction documents. This document cannot be reproduced except in full, without prior written approval of the Company. Any unauthorized alteration, forgery or falsification of the content or appearance of this document is unlawful and offenders may be prosecuted to the fullest extent of the law.

Test Report

No. : CE/2011/10411A Date : 2011/01/11 Page : 7 of 10

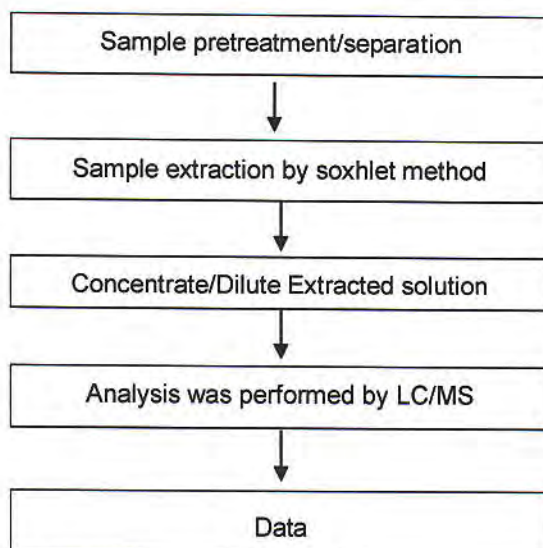
ELSCHUKOM ELEKTROSCHUTZKOMPONENTENBAU GMBH
 GEWERBESTRASSE 87, D-98669 VEILSDORF, GERMANY



Analytical flow chart of Soxhlet extraction (LC/MS) procedure

- 1) Name of the person who made measurement: Lydia Fu
- 2) Name of the person in charge of measurement: Shinjyh Chen

■ Test Items: PFOS/PFOA 、Benzotriazole



Unless otherwise stated the results shown in this test report refer only to the sample(s) tested. This test report cannot be reproduced, except in full, without prior written permission of the Company. (除非另有註明，此報告之結果僅對測試之樣品負責。本報告未經本公司書面許可，不得自行複製。)

This document is issued by the Company subject to its General Conditions of Service printed overleaf, available on request or accessible at www.sgs.com/terms_and_conditions.htm and for electronic format documents, subject to Terms and Conditions for Electronic Documents at www.sgs.com/terms_e-document.htm. Attention is drawn to the limitation of liability, indemnification and jurisdiction issues defined therein. Any holder of this document is advised that information contained hereon reflects the Company's findings at the time of its intervention only and within the limits of Client's instructions, if any. The Company's sole responsibility is to its Client and this document does not exonerate parties to a transaction from exercising all their rights and obligations under the transaction documents. This document cannot be reproduced except in full, without prior written approval of the Company. Any unauthorized alteration, forgery or falsification of the content or appearance of this document is unlawful and offenders may be prosecuted to the fullest extent of the law.

SGS Taiwan Ltd.

SGS 檢驗技術股份有限公司 Chemical-Taipei 33 WuChyuan Road, Wuku Industrial Zone, New Taipei City, Taiwan / 新北市五股區吳福源路33號 +886 (02)2299 3279 T +886 (02)2299 3237 www.sgs.com

Test Report

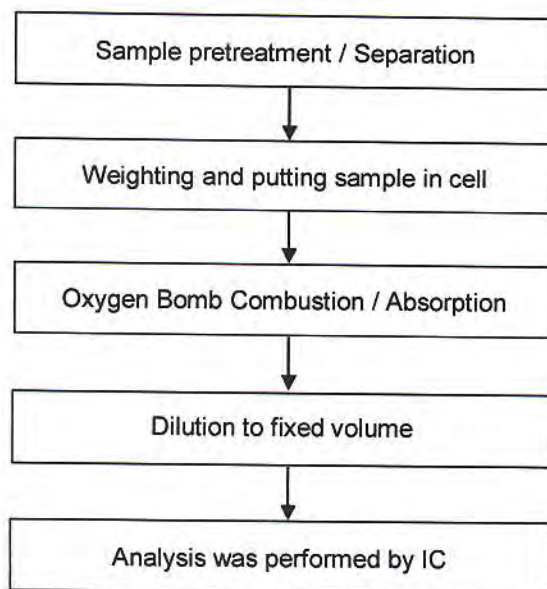
No. : CE/2011/10411A Date : 2011/01/11 Page : 8 of 10

ELSCHUKOM ELEKTROSCHUTZKOMPONENTENBAU GMBH
GEWERBESTRASSE 87, D-98669 VEILSDORF, GERMANY



Analytical flow chart of halogen content

- 1) Name of the person who made measurement: Rita Chen
- 2) Name of the person in charge of measurement: Troy Chang



Unless otherwise stated the results shown in this test report refer only to the sample(s) tested. This test report cannot be reproduced, except in full, without prior written permission of the Company. 除非另有註明，測試結果僅對送樣品負責。本報告未經本公司書面許可，不得翻印複製。

This document is issued by the Company subject to its General Conditions of Service printed overleaf, available on request or accessible at www.sgs.com/terms_and_conditions.htm and for electronic format documents, subject to Terms and Conditions for Electronic Documents at www.sgs.com/terms_e-document.htm. Attention is drawn to the limitation of liability, indemnification and jurisdiction issues defined therein. Any holder of this document is advised that information contained hereon reflects the Company's findings at the time of its intervention only and within the limits of Client's instructions, if any. The Company's sole responsibility is to its Client and this document does not exonerate parties to a transaction from exercising all their rights and obligations under the transaction documents. This document cannot be reproduced except in full, without prior written approval of the Company. Any unauthorized alteration, forgery or falsification of the content or appearance of this document is unlawful and offenders may be prosecuted to the fullest extent of the law.

Test Report

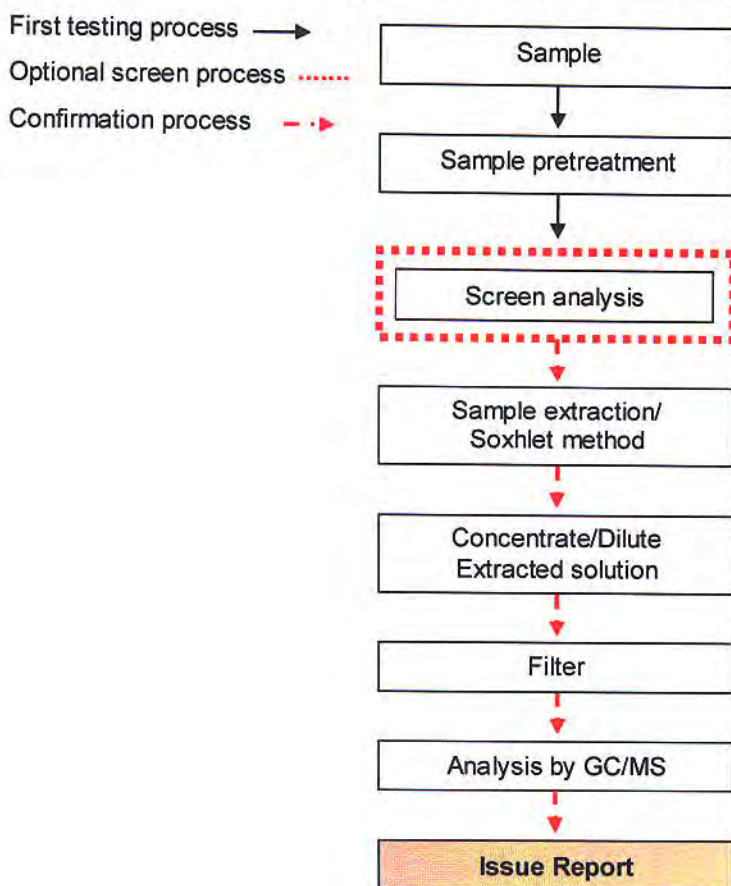
No. : CE/2011/10411A Date : 2011/01/11 Page : 9 of 10

ELSCHUKOM ELEKTROSCHUTZKOMPONENTENBAU GMBH
 GEWERBESTRASSE 87, D-98669 VEILSDORF, GERMANY



PBB/PBDE analytical FLOW CHART

- 1) Name of the person who made measurement: Roman Wong
- 2) Name of the person in charge of measurement: Troy Chang



Unless otherwise stated the results shown in this test report refer only to the sample(s) tested. This test report cannot be reproduced, except in full, without prior written permission of the Company. 除非另有說明，此報告中與任何測試的樣品負責。本報告未經本公司同意，不得作任何複製。

This document is issued by the Company subject to its General Conditions of Service printed overleaf, available on request or accessible at www.sgs.com/terms_and_conditions.htm and for electronic format documents, subject to Terms and Conditions for Electronic Documents at www.sgs.com/terms_e-document.htm. Attention is drawn to the limitation of liability, indemnification and jurisdiction issues defined therein. Any holder of this document is advised that information contained hereon reflects the Company's findings at the time of its intervention only and within the limits of Client's instructions, if any. The Company's sole responsibility is to its Client and this document does not exonerate parties to a transaction from exercising all their rights and obligations under the transaction documents. This document cannot be reproduced except in full, without prior written approval of the Company. Any unauthorized alteration, forgery or falsification of the content or appearance of this document is unlawful and offenders may be prosecuted to the fullest extent of the law.

Test Report

No. : CE/2011/10411A Date : 2011/01/11 Page : 10 of 10

ELSCHUKOM ELEKTROSCHUTZKOMPONENTENBAU GMBH
 GEWERBESTRASSE 87, D-98669 VEILSDORF, GERMANY



**** End of Report ****

Unless otherwise stated the results shown in this test report refer only to the sample(s) tested. This test report cannot be reproduced, except in full, without prior written permission of the Company. 除非另有說明，此報告結果僅對所試的樣品負責。本報告未經本公司書面許可，不可部分複製。

This document is issued by the Company subject to its General Conditions of Service printed overleaf, available on request or accessible at www.sgs.com/terms_and_conditions.htm and, for electronic format documents, subject to Terms and Conditions for Electronic Documents at www.sgs.com/terms_e-document.htm. Attention is drawn to the limitation of liability, indemnification and jurisdiction issues defined therein. Any holder of this document is advised that information contained hereon reflects the Company's findings at the time of its intervention only and within the limits of Client's instructions, if any. The Company's sole responsibility is to its Client and this document does not exonerate parties to a transaction from exercising all their rights and obligations under the transaction documents. This document cannot be reproduced except in full, without prior written approval of the Company. Any unauthorized alteration, forgery or falsification of the content or appearance of this document is unlawful and offenders may be prosecuted to the fullest extent of the law.



Test Report

Number : TWNC00182569

Applicant: Littelfuse, Philippines Inc.
LIMA Technology Center, Lipa City,
Malvar, Batangas

Date : Nov 22, 2010

Sample Description:

One (1) group of submitted samples said to be :
Part Description : Solder (metal)
Part Number : 692213
Date Sample Received : Nov 17, 2010
Date Test Started : Nov 17, 2010

Test Conducted :

As requested by the applicant, for details please refer to attached pages.

Authorized By:
On Behalf Of Intertek Testing Services
Taiwan Limited



K. Y. Liang
Director

This report shall not be reproduced
except in full, without the written
approval of the laboratory.



Number : TWNC00182569

Test Conducted

<u>Testing Item</u>	<u>Result (ppm)</u>
	<u>Silvery Metal</u>
Heavy Metal	
Cadmium (Cd) content	ND
Lead (Pb) content	322
Mercury (Hg) content	ND
Chromium VI (Cr ⁶⁺) content (mg/kg with 50cm ²)	Negative (< 0.02)

Remarks: ppm = Parts per million based on weight of tested sample = mg/kg
ND = Not detected
< = Less than
mg/kg with 50cm² = milligram per kilogram with 50 square centimetre
Negative = A negative test result indicated positive observation was not found at the time of testing.

Responsibility Of Chemist : Irene Chiou / Kevin Liu / Cathy Chen

Date Sample Received : Nov 17, 2010

Testing Period : Nov 17, 2010 To Nov 22, 2010

(II) RoHS Requirement:

<u>Restricted Substances</u>	<u>Limits</u>
Cadmium (Cd) Content	0.01% (100ppm)
Lead (Pb) Content	0.1% (1000ppm)
Mercury (Hg) Content	0.1% (1000ppm)
Chromium VI (Cr ⁶⁺) Content	0.1% (1000ppm)

The above limits were quoted from 2002/95/EC and amendment 2005/618/EC for homogeneous material.



Number : TWNC00182569

Test Conducted

(III) Test Method:

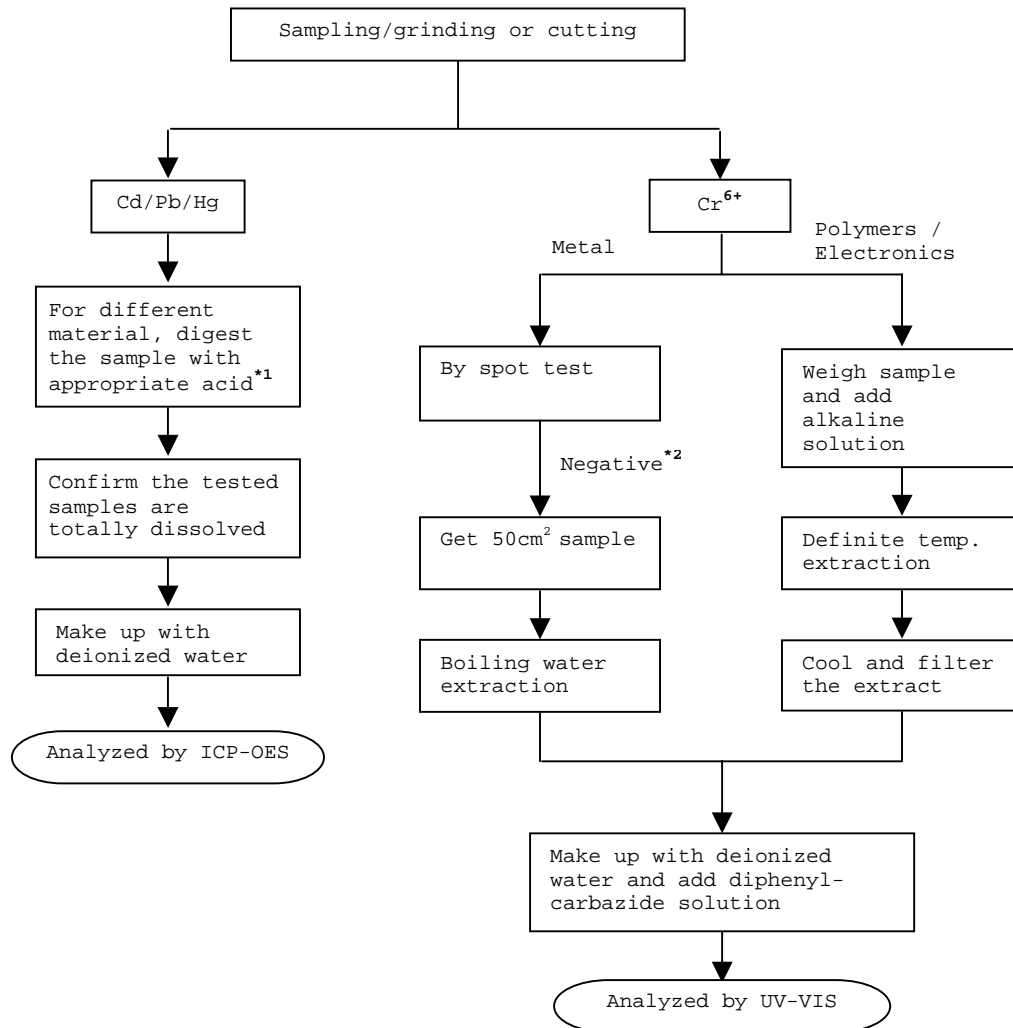
Testing Item	Testing Method	Reporting Limit
Cadmium (Cd) content	With reference to IEC 62321 edition 1.0:2008 in clause 8/9/10, by microwave digestion until the tested samples are totally dissolved and determined by ICP-OES.	2 ppm
Lead (Pb) content	With reference to IEC 62321 edition 1.0:2008 in clause 8/9/10, by microwave digestion until the tested samples are totally dissolved and determined by ICP-OES.	2 ppm
Mercury (Hg) content	With reference to IEC 62321 edition 1.0:2008 in clause 7, by microwave digestion until the tested samples are totally dissolved and determined by ICP-OES.	2 ppm
Chromium VI (Cr ⁶⁺) content	With reference to IEC 62321 edition 1.0:2008 in annex B, by boiling water extraction and determined by UV-Vis spectrophotometer.	0.02 mg/kg with 50cm ²

Remark: Reporting limit = Quantitation limit of analyte in sample

Test Conducted

(IV) Measurement Flowchart:

Test For Cd/Pb/Hg/Chromium (VI)
Reference Standard : IEC 62321 edition 1.0:2008



Remarks:

*1: List Of Appropriate Acid :

Material	Acid Added For Digestion
Polymers	HNO ₃ , HCl, HF, H ₂ O ₂ , H ₃ BO ₃
Metals	HNO ₃ , HCl, HF
Electronics	HNO ₃ , HCl, H ₂ O ₂ , HBF ₄

*2: If the result of spot test is positive, Chromium VI would be determined as detected.

End Of Report

Test Conducted

Photo





Test Report

Number : TWNC00182421

Applicant: Littelfuse, Philippines Inc.
LIMA Technology Center, Lipa
City,
Malvar, Batangas

Date : Nov 19, 2010

Sample Description:

One (1) group of submitted samples said to be :
Part Description : TE Caps
Part Number : 910-017
Date Sample Received : Nov 16, 2010
Date Test Started : Nov 17, 2010

Test Conducted :

As requested by the applicant, for details please refer to attached pages.

Authorized By:
On Behalf Of Intertek Testing Services
Taiwan Limited



K. Y. Liang
Director

This report shall not be reproduced
except in full, without the written
approval of the laboratory.



Number : TWNC00182421

Test Conducted

(I) Test Result Summary :

<u>Testing Item</u>	<u>Result (ppm)</u>
	<u>Brown Plastic</u>
Heavy Metal	
Cadmium (Cd) content	ND
Lead (Pb) content	ND
Mercury (Hg) content	ND
Chromium VI (Cr ⁶⁺) content	ND
Polybrominated Biphenyls (PBBs)	
Monobrominated Biphenyls (MonoBB)	ND
Dibrominated Biphenyls (DiBB)	ND
Tribrominated Biphenyls (TriBB)	ND
Tetrabrominated Biphenyls (TetraBB)	ND
Pentabrominated Biphenyls (PentaBB)	ND
Hexabrominated Biphenyls (HexaBB)	ND
Heptabrominated Biphenyls (HeptaBB)	ND
Octabrominated Biphenyls (OctaBB)	ND
Nonabrominated Biphenyls (NonaBB)	ND
Decabrominated Biphenyl (DecaBB)	ND
Polybrominated Diphenyl Ethers (PBDEs)	
Monobrominated Diphenyl Ethers (MonoBDE)	ND
Dibrominated Diphenyl Ethers (DiBDE)	ND
Tribrominated Diphenyl Ethers (TriBDE)	ND
Tetrabrominated Diphenyl Ethers (TetraBDE)	ND
Pentabrominated Diphenyl Ethers (PentaBDE)	ND
Hexabrominated Diphenyl Ethers (HexaBDE)	ND
Heptabrominated Diphenyl Ethers (HeptaBDE)	ND
Octabrominated Diphenyl Ethers (OctaBDE)	ND
Nonabrominated Diphenyl Ethers (NonaBDE)	ND
Decabrominated Diphenyl Ether (DecaBDE)	ND
Halogen Content	
Fluorine (F)	ND
Chlorine (Cl)	268
Bromine (Br)	ND
Iodine (I)	ND

Remarks: ppm = Parts per million based on weight of tested sample = mg/kg
ND = Not detected

Responsibility Of Chemist : Irene Chiou / Kevin Liu / Cathy Chen

Date Sample Received : Nov 16, 2010

Testing Period : Nov 17, 2010 To Nov 19, 2010



Number : TWNC00182421

Test Conducted

(II) RoHS Requirement:

<u>Restricted Substances</u>	<u>Limits</u>
Cadmium (Cd) Content	0.01% (100ppm)
Lead (Pb) Content	0.1% (1000ppm)
Mercury (Hg) Content	0.1% (1000ppm)
Chromium VI (Cr ⁶⁺) Content	0.1% (1000ppm)
Polybrominated Biphenyls (PBBs)	0.1% (1000ppm)
Polybrominated Diphenyl Ehters (PBDEs)	0.1% (1000ppm)

The above limits were quoted from 2002/95/EC and amendment 2005/618/EC for homogeneous material.

(III) Test Method:

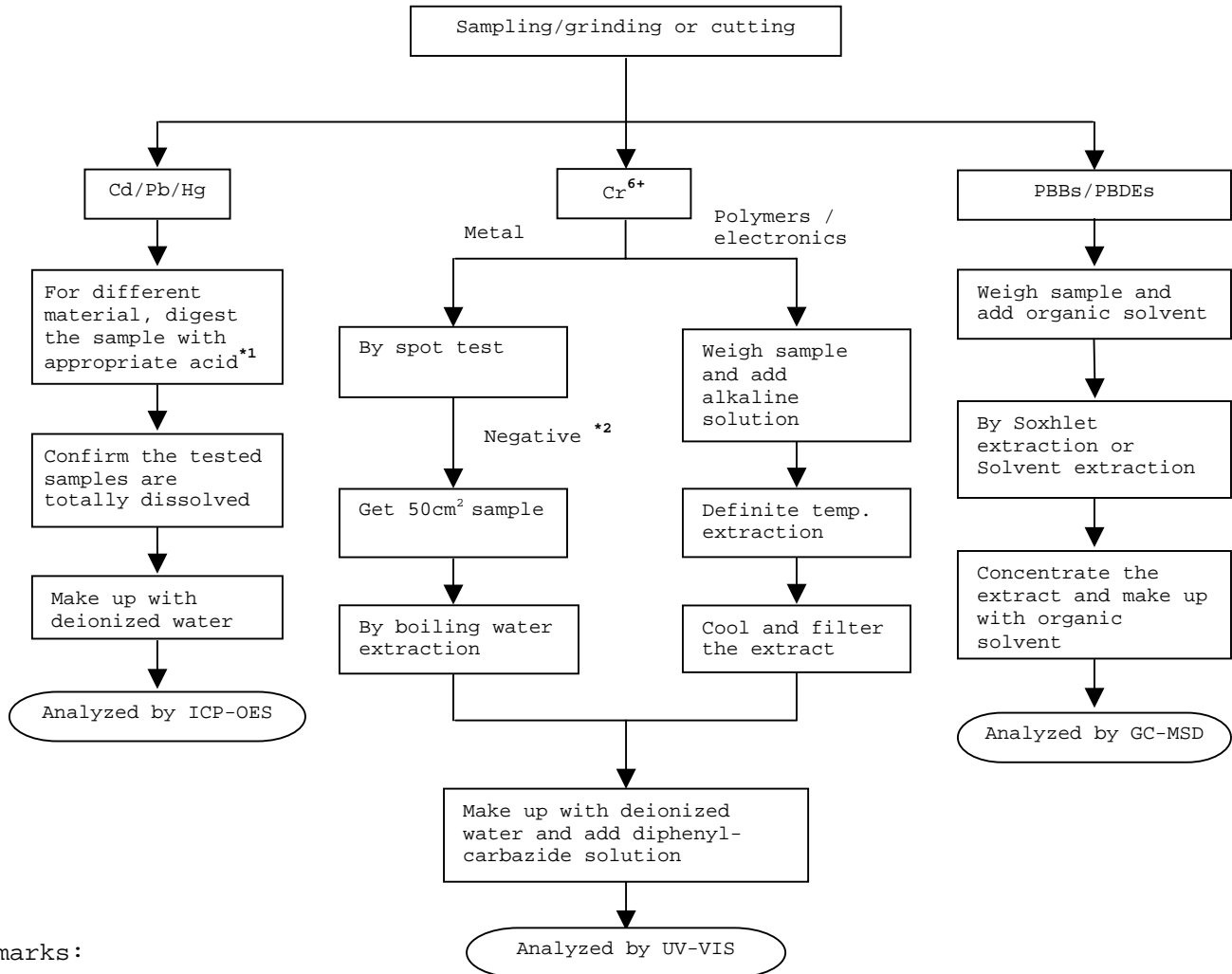
<u>Testing Item</u>	<u>Testing Method</u>	<u>Reporting Limit</u>
Cadmium (Cd) content	With reference to IEC 62321 edition 1.0:2008 in clause 8/9/10, by microwave digestion until the tested samples are totally dissolved and determined by ICP-OES.	2 ppm
Lead (Pb) content	With reference to IEC 62321 edition 1.0:2008 in clause 8/9/10, by microwave digestion until the tested samples are totally dissolved and determined by ICP-OES.	2 ppm
Mercury (Hg) content	With reference to IEC 62321 edition 1.0:2008 in clause 7, by microwave digestion until the tested samples are totally dissolved and determined by ICP-OES.	2 ppm
Chromium VI (Cr ⁶⁺) content	With reference to IEC 62321 edition 1.0:2008 in annex C, by alkaline digestion and determined by UV-Vis spectrophotometer.	1 ppm
Polybrominated Biphenyls (PBBs)	With reference to IEC 62321 edition 1.0:2008 in annex A, by solvent extraction and determined by GC-MSD and further HPLC confirmation when necessary.	5 ppm
Polybrominated Diphenyl Ethers (PBDEs)	With reference to IEC 62321 edition 1.0:2008 in annex A, by solvent extraction and determined by GC-MSD and further HPLC confirmation when necessary.	5 ppm
Halogen Content	With reference to EN 14582:2007 by combustion flask with oxygen and determined by ion chromatography	50 ppm

Remark: Reporting limit = Quantitation limit of analyte in sample

Test Conducted

(IV) Measurement Flowchart:

Test For Cd/Pb/Hg/Chromium (VI)/PBBS/PBDES Contents
 Reference Standard: IEC 62321 edition 1.0:2008



Remarks:

*1: List Of Appropriate Acid:

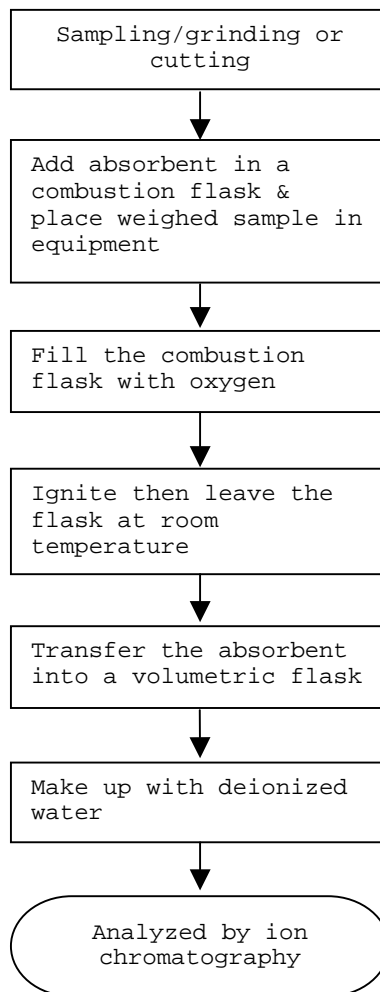
Material	Acid Added For Digestion
Polymers	HNO ₃ , HCl, HF, H ₂ O ₂ , H ₃ BO ₃
Metals	HNO ₃ , HCl, HF
Electronics	HNO ₃ , HCl, H ₂ O ₂ , HBF ₄

*2: If the result of spot test is positive, Chromium VI would be determined as detected.

Test Conducted

(IV) Measurement Flowchart:

Test For Halogen Content
Reference Standard: EN 14582



End Of Report

Test Conducted

Photo





Test Report

Number : TWNC00202736

Applicant: Littelfuse, Philippines Inc.
LIMA Technology Center, Lipa City,
Malvar, Batangas

Date : May 25, 2011

Sample Description:

One (1) group of submitted samples said to be :
Part Description : TE Socket with pin
Part Number : 867-002
Date Sample Received : May 20, 2011
Date Test Started : May 21, 2011

Test Conducted :

As requested by the applicant, for details please refer to attached pages.

Authorized By:
On Behalf Of Intertek Testing Services
Taiwan Limited



K. Y. Liang
Director

This report shall not be reproduced
except in full, without the written
approval of the laboratory.



Number : TWNC00202736

Test Conducted

(I) Test Result Summary :

Test Item	Result (ppm)		
	(1)	(2)	(3)
Heavy Metal			
Cadmium (Cd) content	ND	ND	ND
Lead (Pb) content	ND	ND	ND
Mercury (Hg) content	ND	ND	ND
Chromium VI (Cr ⁶⁺) content	ND	--	--
Chromium VI (Cr ⁶⁺) content (mg/kg with 50cm ²)	--	Negative (< 0.02)	Negative (< 0.02)
Polybrominated Biphenyls (PBBs)			
Monobrominated Biphenyls (MonoBB)	ND	--	--
Dibrominated Biphenyls (DiBB)	ND	--	--
Tribrominated Biphenyls (TriBB)	ND	--	--
Tetrabrominated Biphenyls (TetraBB)	ND	--	--
Pentabrominated Biphenyls (PentaBB)	ND	--	--
Hexabrominated Biphenyls (HexaBB)	ND	--	--
Heptabrominated Biphenyls (HeptaBB)	ND	--	--
Octabrominated Biphenyls (OctaBB)	ND	--	--
Nonabrominated Biphenyls (NonaBB)	ND	--	--
Decabrominated Biphenyl (DecaBB)	ND	--	--
Polybrominated Diphenyl Ethers (PBDEs)			
Monobrominated Diphenyl Ethers (MonoBDE)	ND	--	--
Dibrominated Diphenyl Ethers (DiBDE)	ND	--	--
Tribrominated Diphenyl Ethers (TriBDE)	ND	--	--
Tetrabrominated Diphenyl Ethers (TetraBDE)	ND	--	--
Pentabrominated Diphenyl Ethers (PentaBDE)	ND	--	--
Hexabrominated Diphenyl Ethers (HexaBDE)	ND	--	--
Heptabrominated Diphenyl Ethers (HeptaBDE)	ND	--	--
Octabrominated Diphenyl Ethers (OctaBDE)	ND	--	--
Nonabrominated Diphenyl Ethers (NonaBDE)	ND	--	--
Decabrominated Diphenyl Ether (DecaBDE)	ND	--	--



Number : TWNC00202736

Test Conducted

(I) Test Result Summary :

Test Item	Result (ppm)		
	(1)	(2)	(3)
Halogen Content			
Fluorine (F)	ND	--	--
Chlorine (Cl)	ND	--	--
Bromine (Br)	ND	--	--
Iodine (I)	ND	--	--

Remarks: ppm = Parts per million based on weight of tested sample = mg/kg
 ND = Not detected
 < = Less than
 mg/kg with 50cm² = milligram per kilogram with 50 square centimetre
 Negative = A negative test result indicated positive observation was not found at the time of Test.

Tested Components

- (1) Black Body Part
- (2) Silvery Plating On Metal Pin
- (3) Silvery Metal Substrate

Responsibility Of Chemist : Irene Chiou / Kevin Liu / Cathy Chen

Date Sample Received : May 20, 2011

Test Period : May 21, 2011 To May 24, 2011

(II) RoHS Requirement:

Restricted Substances	Limits
Cadmium (Cd) Content	0.01% (100ppm)
Lead (Pb) Content	0.1% (1000ppm)
Mercury (Hg) Content	0.1% (1000ppm)
Chromium VI (Cr ⁶⁺) Content	0.1% (1000ppm)
Polybrominated Biphenyls (PBBs)	0.1% (1000ppm)
Polybrominated Diphenyl Ehters (PBDEs)	0.1% (1000ppm)

The above limits were quoted from 2002/95/EC and amendment 2005/618/EC for homogeneous material.

Test Conducted

(III) Test Method:

Test Item	Test Method	Reporting Limit
Cadmium (Cd) content	With reference to IEC 62321 edition 1.0:2008 in clause 8/9/10, by microwave digestion until the tested samples are totally dissolved and determined by ICP-OES.	2 ppm
Lead (Pb) content	With reference to IEC 62321 edition 1.0:2008 in clause 8/9/10, by microwave digestion until the tested samples are totally dissolved and determined by ICP-OES.	2 ppm
Mercury (Hg) content	With reference to IEC 62321 edition 1.0:2008 in clause 7, by microwave digestion until the tested samples are totally dissolved and determined by ICP-OES.	2 ppm
Chromium VI (Cr ⁶⁺) content	With reference to IEC 62321 edition 1.0:2008 in annex C, by alkaline digestion and determined by UV-Vis spectrophotometer.	1 ppm
Chromium VI (Cr ⁶⁺) content	With reference to IEC 62321 edition 1.0:2008 in annex B, by boiling water extraction and determined by UV-Vis spectrophotometer.	0.02 mg/kg with 50cm ²
Polybrominated Biphenyls (PBBs)	With reference to IEC 62321 edition 1.0:2008 in annex A, by solvent extraction and determined by GC-MSD and further HPLC confirmation when necessary.	5 ppm
Polybrominated Diphenyl Ethers (PBDEs)	With reference to IEC 62321 edition 1.0:2008 in annex A, by solvent extraction and determined by GC-MSD and further HPLC confirmation when necessary.	5 ppm
Halogen Content	With reference to EN 14582:2007 by calorimetric bomb with oxygen and determined by ion chromatography	50 ppm

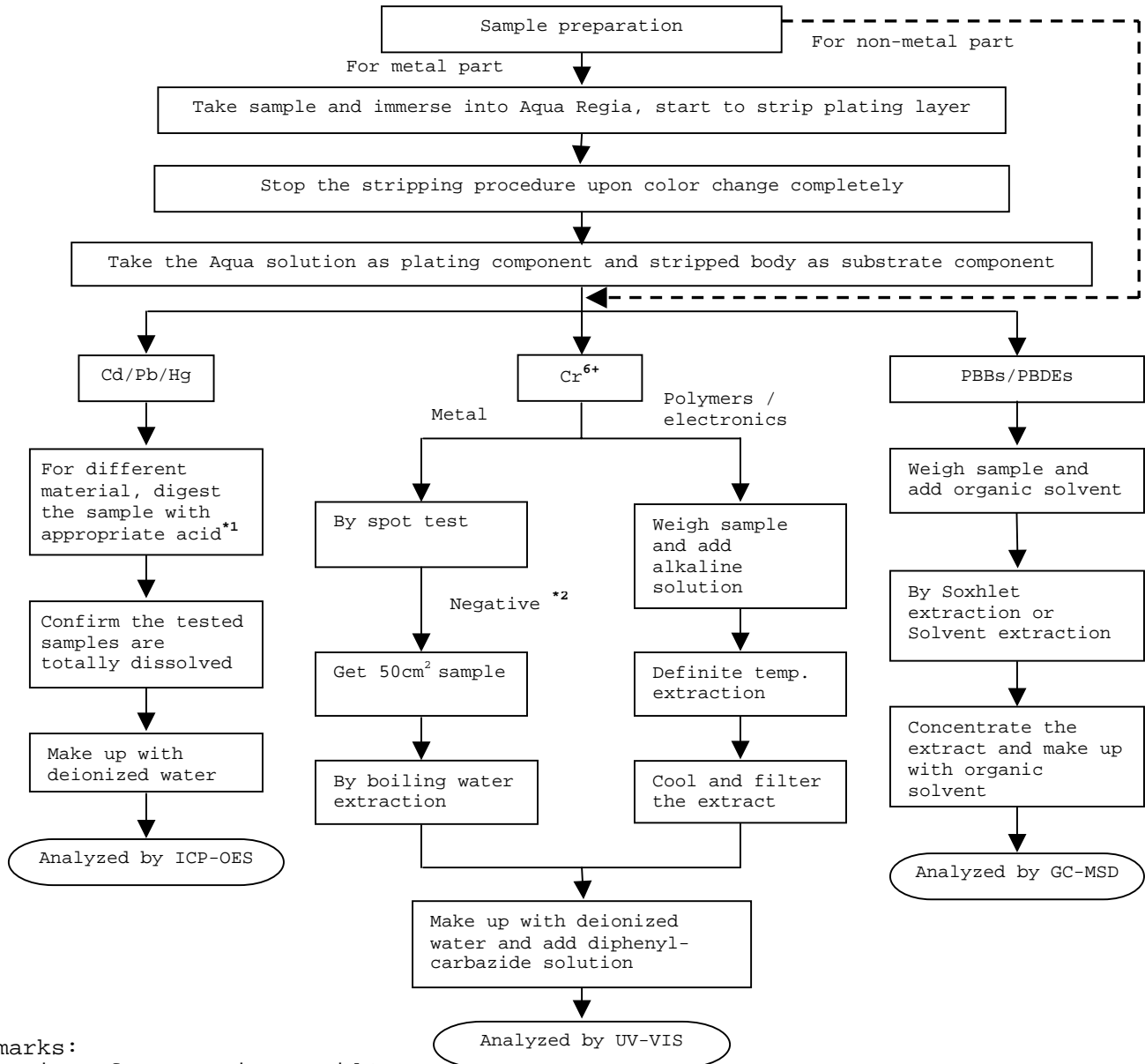
Remark: Reporting limit = Quantitation limit of analyte in sample

Test Conducted

(IV) Measurement Flowchart:

Test For Cd/Pb/Hg/Chromium (VI)/PBBS/PBDES Contents

Reference Standard: IEC 62321 edition 1.0:2008



Remarks:

*1: List Of Appropriate Acid:

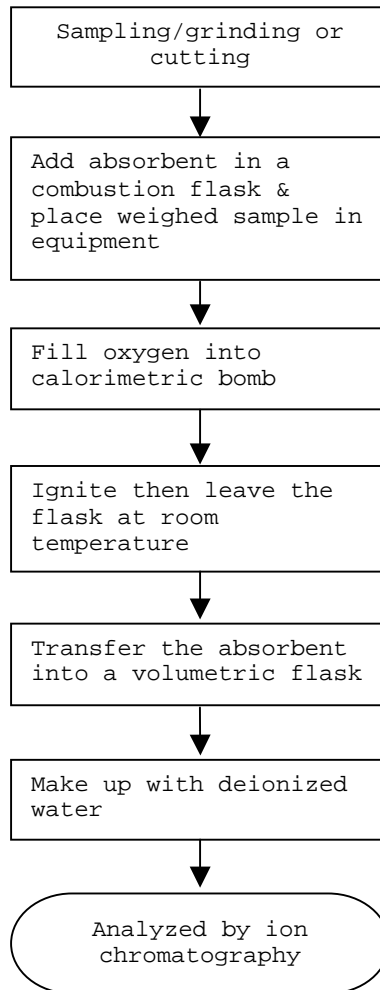
Material	Acid Added For Digestion
Polymers	HNO ₃ , HCl, HF, H ₂ O ₂ , H ₃ BO ₃
Metals	HNO ₃ , HCl, HF
Electronics	HNO ₃ , HCl, H ₂ O ₂ , HBF ₄

*2: If the result of spot test is positive, Chromium VI would be determined as detected.

Test Conducted

(IV) Measurement Flowchart:

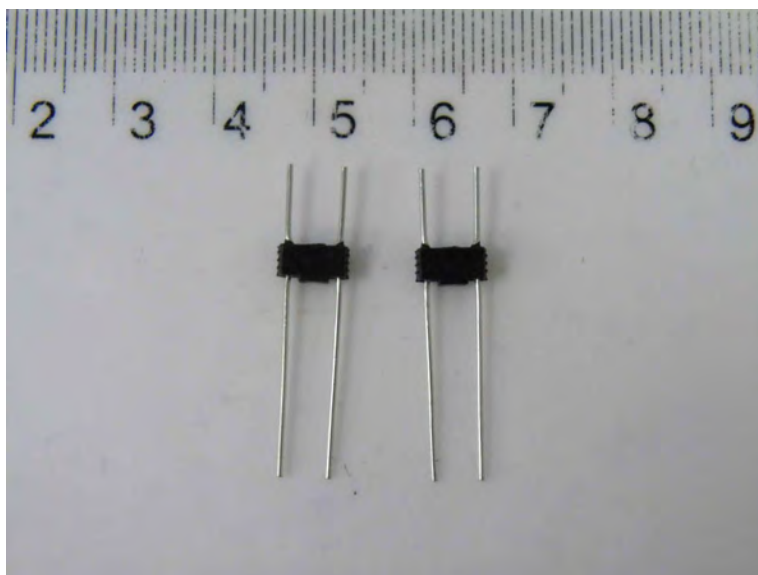
Test For Halogen Content
Reference Standard : EN 14582



End Of Report

Test Conducted

Photo





Test Report

Number : TWNC00182427

Applicant: Littelfuse, Philippines Inc.
LIMA Technology Center, Lipa City,
Malvar, Batangas

Date : Nov 22, 2010

Sample Description:

One (1) group of submitted samples said to be :

Part Description : TRTE Yarn
Part Number : 648118
Date Sample Received : Nov 16, 2010
Date Test Started : Nov 17, 2010

Test Conducted :

As requested by the applicant, for details please refer to attached pages.

Authorized By:
On Behalf Of Intertek Testing Services
Taiwan Limited



K. Y. Liang
Director

This report shall not be reproduced
except in full, without the written
approval of the laboratory.



Number : TWNC00182427

Test Conducted

(I) Test Result Summary :

<u>Testing Item</u>	<u>Result (ppm)</u>
	<u>White Yarn</u>
Heavy Metal	
Cadmium (Cd) content	ND
Lead (Pb) content	18
Mercury (Hg) content	ND
Chromium VI (Cr ⁶⁺) content	ND
Polybrominated Biphenyls (PBBs)	
Monobrominated Biphenyls (MonoBB)	ND
Dibrominated Biphenyls (DiBB)	ND
Tribrominated Biphenyls (TriBB)	ND
Tetrabrominated Biphenyls (TetraBB)	ND
Pentabrominated Biphenyls (PentaBB)	ND
Hexabrominated Biphenyls (HexaBB)	ND
Heptabrominated Biphenyls (HeptaBB)	ND
Octabrominated Biphenyls (OctaBB)	ND
Nonabrominated Biphenyls (NonaBB)	ND
Decabrominated Biphenyl (DecaBB)	ND
Polybrominated Diphenyl Ethers (PBDEs)	
Monobrominated Diphenyl Ethers (MonoBDE)	ND
Dibrominated Diphenyl Ethers (DiBDE)	ND
Tribrominated Diphenyl Ethers (TriBDE)	ND
Tetrabrominated Diphenyl Ethers (TetraBDE)	ND
Pentabrominated Diphenyl Ethers (PentaBDE)	ND
Hexabrominated Diphenyl Ethers (HexaBDE)	ND
Heptabrominated Diphenyl Ethers (HeptaBDE)	ND
Octabrominated Diphenyl Ethers (OctaBDE)	ND
Nonabrominated Diphenyl Ethers (NonaBDE)	ND
Decabrominated Diphenyl Ether (DecaBDE)	ND
Halogen Content	
Fluorine (F)	ND
Chlorine (Cl)	214
Bromine (Br)	ND
Iodine (I)	ND

Remarks: ppm = Parts per million based on weight of tested sample = mg/kg
ND = Not detected

Responsibility Of Chemist : Irene Chiou / Kevin Liu / Cathy Chen

Date Sample Received : Nov 16, 2010
Testing Period : Nov 17, 2010 To Nov 22, 2010



Number : TWNC00182427

Test Conducted

(II) RoHS Requirement:

<u>Restricted Substances</u>	<u>Limits</u>
Cadmium (Cd) Content	0.01% (100ppm)
Lead (Pb) Content	0.1% (1000ppm)
Mercury (Hg) Content	0.1% (1000ppm)
Chromium VI (Cr ⁶⁺) Content	0.1% (1000ppm)
Polybrominated Biphenyls (PBBs)	0.1% (1000ppm)
Polybrominated Diphenyl Ehters (PBDEs)	0.1% (1000ppm)

The above limits were quoted from 2002/95/EC and amendment 2005/618/EC for homogeneous material.

(III) Test Method:

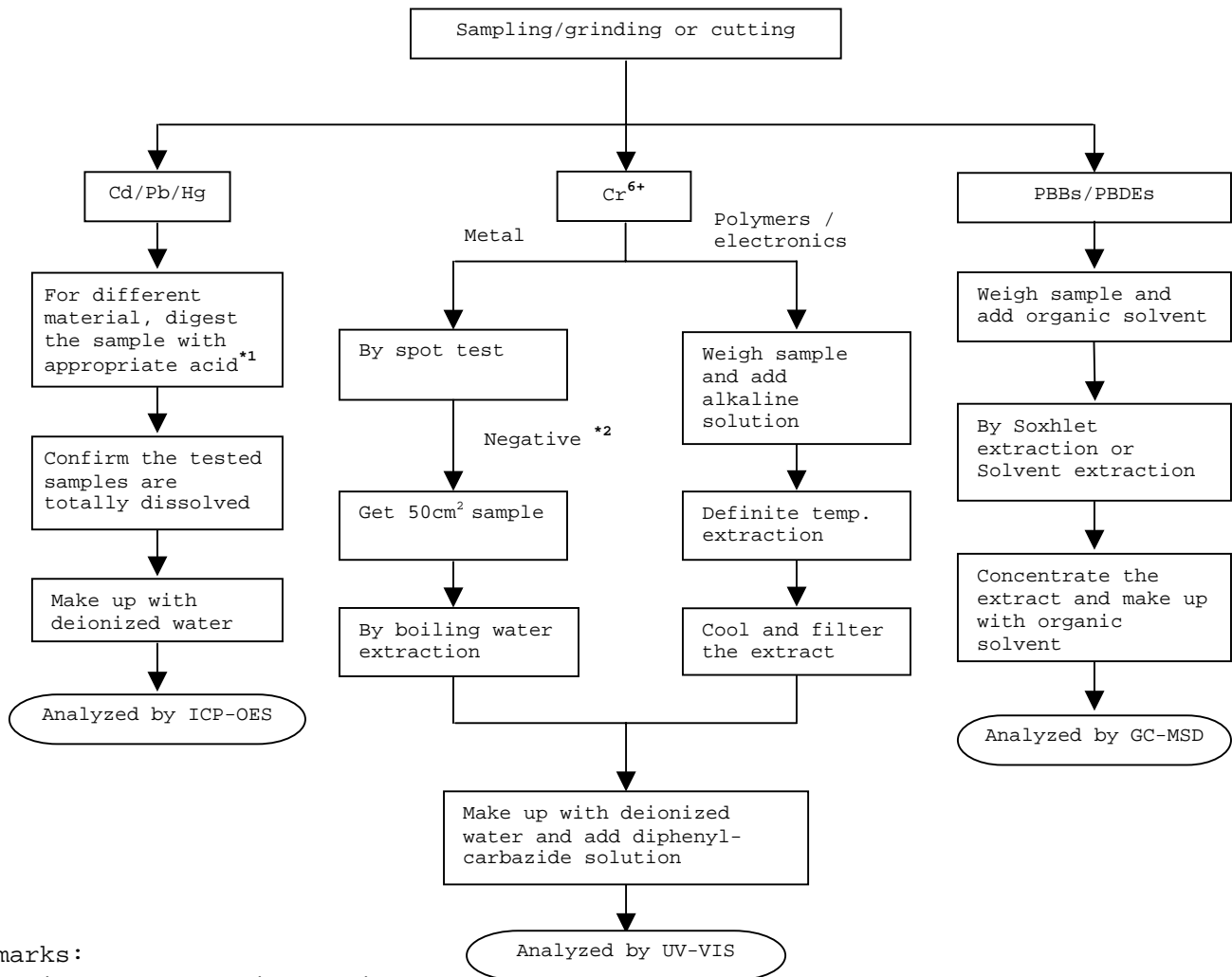
<u>Testing Item</u>	<u>Testing Method</u>	<u>Reporting Limit</u>
Cadmium (Cd) content	With reference to IEC 62321 edition 1.0:2008 in clause 8/9/10, by microwave digestion until the tested samples are totally dissolved and determined by ICP-OES.	2 ppm
Lead (Pb) content	With reference to IEC 62321 edition 1.0:2008 in clause 8/9/10, by microwave digestion until the tested samples are totally dissolved and determined by ICP-OES.	2 ppm
Mercury (Hg) content	With reference to IEC 62321 edition 1.0:2008 in clause 7, by microwave digestion until the tested samples are totally dissolved and determined by ICP-OES.	2 ppm
Chromium VI (Cr ⁶⁺) content	With reference to IEC 62321 edition 1.0:2008 in annex C, by alkaline digestion and determined by UV-Vis spectrophotometer.	1 ppm
Polybrominated Biphenyls (PBBs)	With reference to IEC 62321 edition 1.0:2008 in annex A, by solvent extraction and determined by GC-MSD and further HPLC confirmation when necessary.	5 ppm
Polybrominated Diphenyl Ethers (PBDEs)	With reference to IEC 62321 edition 1.0:2008 in annex A, by solvent extraction and determined by GC-MSD and further HPLC confirmation when necessary.	5 ppm
Halogen Content	With reference to EN 14582:2007 by calorimetric bomb with oxygen and determined by ion chromatography	50 ppm

Remark: Reporting limit = Quantitation limit of analyte in sample

Test Conducted

(IV) Measurement Flowchart:

Test For Cd/Pb/Hg/Chromium (VI)/PBBS/PBDES Contents
Reference Standard: IEC 62321 edition 1.0:2008



Remarks:

*1: List Of Appropriate Acid :

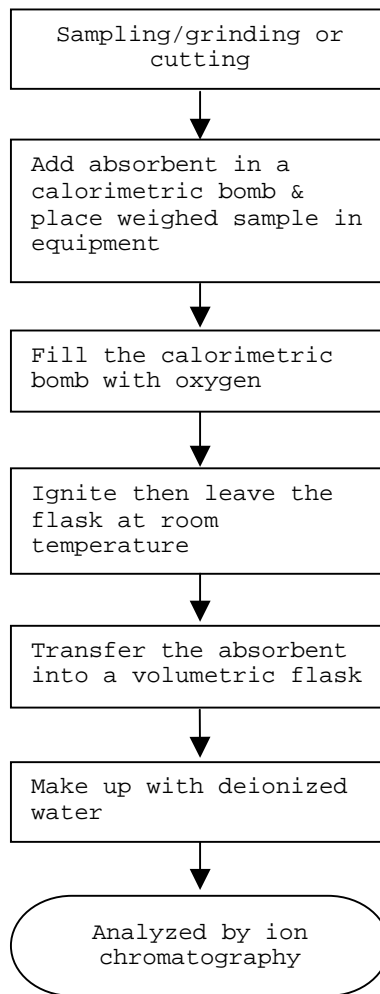
Material	Acid Added For Digestion
Polymers	HNO ₃ , HCl, HF, H ₂ O ₂ , H ₃ BO ₃
Metals	HNO ₃ , HCl, HF
Electronics	HNO ₃ , HCl, H ₂ O ₂ , HBF ₄

*2: If the result of spot test is positive, Chromium VI would be determined as detected.

Test Conducted

(IV) Measurement Flowchart:

Test For Halogen Content
Reference Standard: EN 14582



End Of Report

Test Conducted

Photo

