



ICP Test Report Certification Packet

Company name: Littelfuse, Inc.
Product Series: Surface Mount Varistors
Product #: MLN Series
Issue Date: July 06, 2010

It is hereby certified by Littelfuse, Inc. that there is neither RoHS (EU Directive 2002/95/EC)-restricted substance nor such use, for materials to be used for unit parts, for packing/package materials, and for additives and the like in the manufacturing processes. In addition, it is hereby reported to you that the parts and sub-materials, the materials to be used for unit parts, the packing/package materials, and the additives and the like in the manufacturing processes, are all composed of the following components.

Issued by:



<Global EHS Coordinator>

(1) Parts, sub-materials and unit parts

This document covers the MLN Surface Mount Varistors RoHS-Compliant series products manufactured by Littelfuse, Inc.

< Raw Materials Used

Please see Table 1

(2) The ICP data on all measurable substances

Please see appropriate pages as identified in Table 1

Remarks :

Pb (lead) contained in glass of electronic components and is categorized as exempt under section 5 of the RoHS Annex.



Table 1: List of Raw Materials covered by this report

Total Parts	Raw Material Part Number	Raw Material Description	Page(s)
1	NA	Black Chip Array	3-7
2	NA	MS253 Terminations	8-14



TEST REPORT

NUMBER: SZHH0048754804

APPLICANT: LITTELFUSE, INC
8755 WEST HIGGINS ROAD SUITE 500
CHICAGO IL 60631 USA

DATE: May 20, 2010

ATTN: KRISTEEN BACILA/ARSENIO CESISTA JR.

SAMPLE DESCRIPTION:

ONE (1) SUBMITTED SAMPLE SAID TO BE **BLACK MATERIAL.**
PART DESCRIPTION : BLACK CHIP ARRAY.
DATE SAMPLE RECEIVED : MAY 17, 2010.
DATE TEST STARTED : MAY 17, 2010.



TESTS CONDUCTED:

AS REQUESTED BY THE APPLICANT, FOR DETAILS REFER TO ATTACHED PAGE(S)

AUTHORIZED BY:
FOR INTERTEK TESTING SERVICES
SHENZHEN LTD.



KARBON M.Y. WU
GENERAL MANAGER



TEST REPORT

NUMBER: SZHH0048754804

TESTS CONDUCTED

RoHS CHEMICAL TEST

(A) TEST RESULT SUMMARY:

TESTING ITEM	RESULT
CADMIUM (Cd) CONTENT (mg/kg)	ND (<2)
LEAD (Pb) CONTENT (mg/kg)	ND (<2)
MERCURY (Hg) CONTENT (mg/kg)	ND (<2)
CHROMIUM (VI)(Cr ⁶⁺) CONTENT (mg/kg)	ND (<1)
POLYBROMINATED BIPHENYLS (PBBs) (mg/kg)	
MONOBROMOBIPHENYL (MonoBB)	ND (<5)
DIBROMOBIPHENYL (DiBB)	ND (<5)
TRIBROMOBIPHENYL (TriBB)	ND (<5)
TETRABROMOBIPHENYL (TetraBB)	ND (<5)
PENTABROMOBIPHENYL (PentaBB)	ND (<5)
HEXABROMOBIPHENYL (HexaBB)	ND (<5)
HEPTABROMOBIPHENYL (HeptaBB)	ND (<5)
OCTABROMOBIPHENYL (OctaBB)	ND (<5)
NONABROMOBIPHENYL (NonaBB)	ND (<5)
DECABROMOBIPHENYL (DecaBB)	ND (<5)
POLYBROMINATED DIPHENYL ETHERS (PBDEs) (mg/kg)	
MONOBROMODIPHENYL ETHER (MonoBDE)	ND (<5)
DIBROMODIPHENYL ETHER (DiBDE)	ND (<5)
TRIBROMODIPHENYL ETHER (TriBDE)	ND (<5)
TETRABROMODIPHENYL ETHER (TetraBDE)	ND (<5)
PENTABROMODIPHENYL ETHER (PentaBDE)	ND (<5)
HEXABROMODIPHENYL ETHER (HexaBDE)	ND (<5)
HEPTABROMODIPHENYL ETHER (HeptaBDE)	ND (<5)
OCTABROMODIPHENYL ETHER (OctaBDE)	ND (<5)
NONABROMODIPHENYL ETHER (NonaBDE)	ND (<5)
DECABROMODIPHENYL ETHER (DecaBDE)	ND (<5)

CHEMIST: LV LINNA

mg/kg = MILLIGRAM PER KILOGRAM = ppm

< = LESS THAN

ND = NOT DETECTED



TEST REPORT

NUMBER: SZHH0048754804

TESTS CONDUCTED

(B) RoHS REQUIREMENT:

RESTRICTED SUBSTANCES	LIMITS
CADMIUM (Cd)	0.01% (100 ppm)
LEAD (Pb)	0.1% (1000 ppm)
MERCURY (Hg)	0.1% (1000 ppm)
CHROMIUM (VI) (Cr ⁶⁺)	0.1% (1000 ppm)
POLYBROMINATED BIPHENYLS (PBBs)	0.1% (1000 ppm)
POLYBROMINATED DIPHENYL ETHERS (PBDEs)	0.1% (1000 ppm)

THE ABOVE LIMITS WERE QUOTED FROM 2002/95/EC AND AMENDMENT 2005/618/EC FOR HOMOGENEOUS MATERIAL.

(C) TEST METHOD:

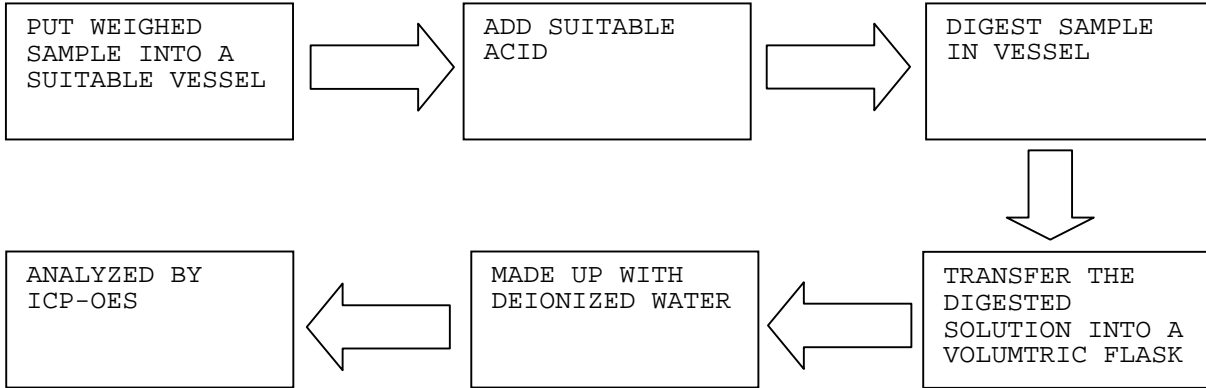
TESTING ITEM	TESTING METHOD	REPORTING LIMIT
CADMIUM (Cd) CONTENT	WITH REFERENCE TO IEC 62321 EDITION 1.0:2008, BY ACID DIGESTION AND DETERMINED BY ICP - OES	2 mg/kg
LEAD (Pb) CONTENT	WITH REFERENCE TO IEC 62321 EDITION 1.0:2008, BY ACID DIGESTION AND DETERMINED BY ICP - OES	2 mg/kg
MERCURY (Hg) CONTENT	WITH REFERENCE TO IEC 62321 EDITION 1.0:2008, BY ACID DIGESTION AND DETERMINED BY ICP - OES	2 mg/kg
CHROMIUM (VI) (Cr ⁶⁺) CONTENT	WITH REFERENCE TO IEC 62321 EDITION 1.0:2008, BY ALKALINE DIGESTION AND DETERMINED BY UV-VIS SPECTROPHOTOMETER	1 mg/kg
POLYBROMINATED BIPHENYLS (PBBs) & POLYBROMINATED DIPHENYL ETHERS (PBDEs)	WITH REFERENCE TO IEC 62321 EDITION 1.0:2008, BY SOLVENT EXTRACTION AND DETERMINED BY GC/MS AND FURTHER HPLC CONFIRMATION WHEN NECESSARY	5 mg/kg

DATE SAMPLE RECEIVED : MAY 17, 2010
TESTING PERIOD : MAY 17, 2010 TO MAY 19, 2010

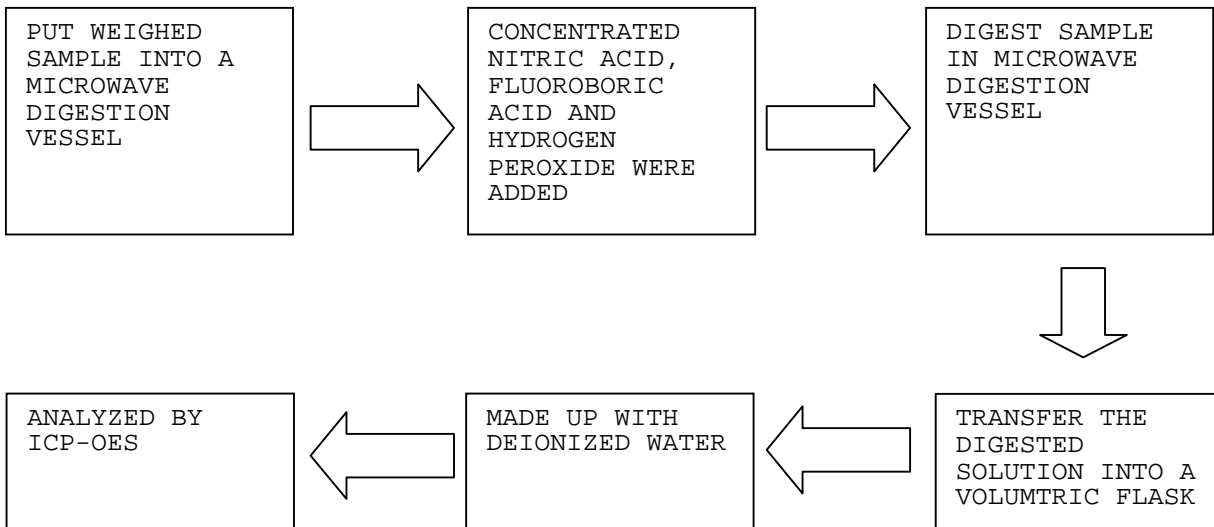
TESTS CONDUCTED

(D) MEASUREMENT FLOWCHART:

1. TEST FOR Cd/Pb CONTENTS

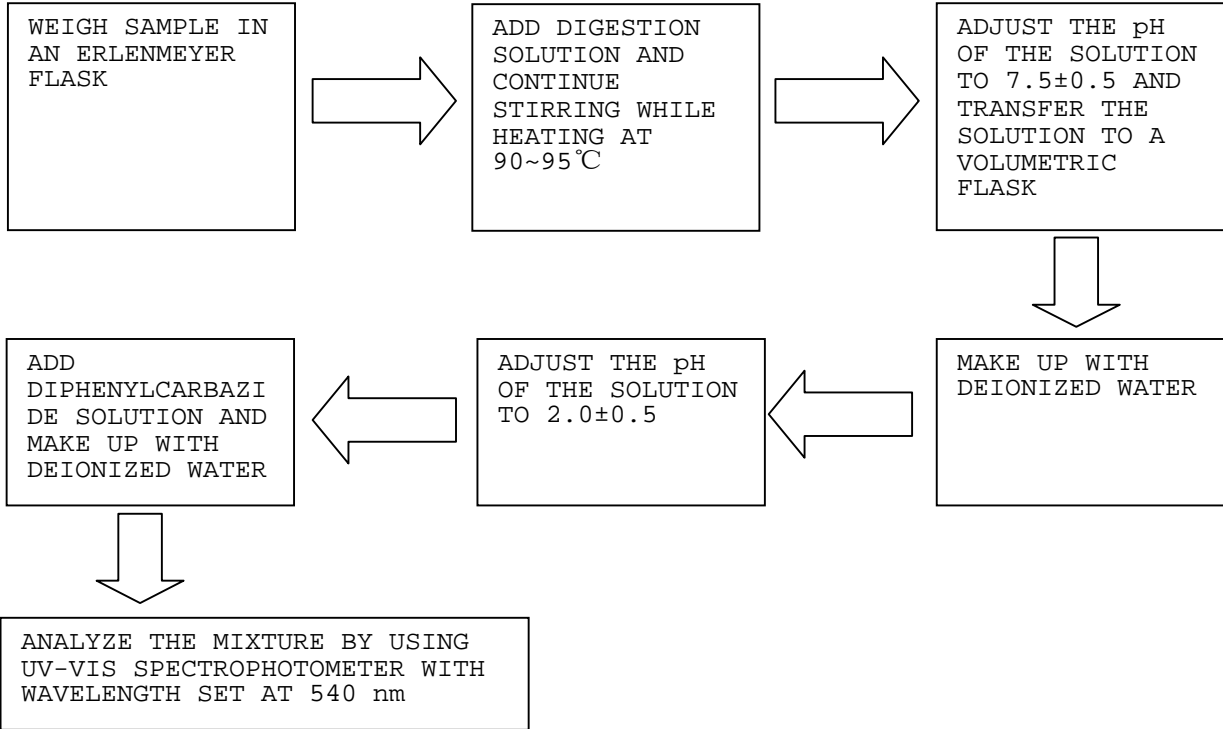


2. TEST FOR Hg CONTENT

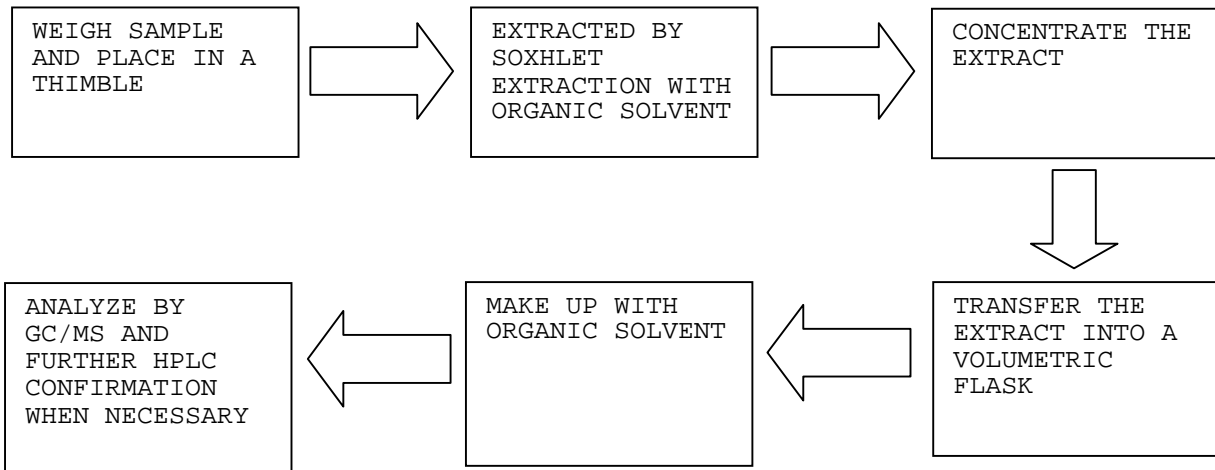


TESTS CONDUCTED

3. TEST FOR CHROMIUM (VI) (Cr⁶⁺) CONTENT (ALKALINE DIGESTION)



4. TEST FOR PBBs/PBDEs CONTENTS



END OF REPORT



TEST REPORT

NUMBER: SZHH0048757803

APPLICANT: LITTELFUSE, INC.
8755 WEST HIGGINS ROAD SUITE 500
CHICAGO IL 60631 USA

DATE: May 21, 2010

ATTN: KRISTEEN BACILA/ARSENIO CESISTA JR.

SAMPLE DESCRIPTION:

ONE (1) SUBMITTED SAMPLE SAID TO BE **GREY PASTE**.

PART DESCRIPTION : TERMINATIONS.
PART NUMBER : MS253.
DATE SAMPLE RECEIVED : MAY 17, 2010.
DATE TEST STARTED : MAY 17, 2010.



TESTS CONDUCTED:

AS REQUESTED BY THE APPLICANT, FOR DETAILS REFER TO ATTACHED PAGE(S)

AUTHORIZED BY:
FOR INTERTEK TESTING SERVICES
SHENZHEN LTD.



KARBON M.Y. WU
GENERAL MANAGER



TEST REPORT

NUMBER: SZHH0048757803

TESTS CONDUCTED

1 RoHS CHEMICAL TEST

(A) TEST RESULT SUMMARY:

TESTING ITEM	RESULT
CADMIUM (Cd) CONTENT (mg/kg)	ND (<2)
LEAD (Pb) CONTENT (mg/kg)	2060
MERCURY (Hg) CONTENT (mg/kg)	ND (<2)
CHROMIUM (VI)(Cr ⁶⁺) CONTENT (mg/kg)	ND (<1)
POLYBROMINATED BIPHENYLS (PBBs) (mg/kg)	
MONOBROMOBIPHENYL (MonoBB)	ND (<5)
DIBROMOBIPHENYL (DiBB)	ND (<5)
TRIBROMOBIPHENYL (TriBB)	ND (<5)
TETRABROMOBIPHENYL (TetraBB)	ND (<5)
PENTABROMOBIPHENYL (PentaBB)	ND (<5)
HEXABROMOBIPHENYL (HexaBB)	ND (<5)
HEPTABROMOBIPHENYL (HeptaBB)	ND (<5)
OCTABROMOBIPHENYL (OctaBB)	ND (<5)
NONABROMOBIPHENYL (NonaBB)	ND (<5)
DECABROMOBIPHENYL (DecaBB)	ND (<5)
POLYBROMINATED DIPHENYL ETHERS (PBDEs) (mg/kg)	
MONOBROMODIPHENYL ETHER (MonoBDE)	ND (<5)
DIBROMODIPHENYL ETHER (DiBDE)	ND (<5)
TRIBROMODIPHENYL ETHER (TriBDE)	ND (<5)
TETRABROMODIPHENYL ETHER (TetraBDE)	ND (<5)
PENTABROMODIPHENYL ETHER (PentaBDE)	ND (<5)
HEXABROMODIPHENYL ETHER (HexaBDE)	ND (<5)
HEPTABROMODIPHENYL ETHER (HeptaBDE)	ND (<5)
OCTABROMODIPHENYL ETHER (OctaBDE)	ND (<5)
NONABROMODIPHENYL ETHER (NonaBDE)	ND (<5)
DECABROMODIPHENYL ETHER (DecaBDE)	ND (<5)

CHEMIST: LV LINNA

mg/kg = MILLIGRAM PER KILOGRAM BASED ON DRY WEIGHT OF SAMPLE = ppm

< = LESS THAN

ND = NOT DETECTED



TEST REPORT

NUMBER: SZHH0048757803

TESTS CONDUCTED

(B) RoHS REQUIREMENT:

RESTRICTED SUBSTANCES	LIMITS
CADMIUM (Cd)	0.01% (100 ppm)
LEAD (Pb)	0.1% (1000 ppm)
MERCURY (Hg)	0.1% (1000 ppm)
CHROMIUM (VI) (Cr ⁶⁺)	0.1% (1000 ppm)
POLYBROMINATED BIPHENYLS (PBBs)	0.1% (1000 ppm)
POLYBROMINATED DIPHENYL ETHERS (PBDEs)	0.1% (1000 ppm)

THE ABOVE LIMITS WERE QUOTED FROM 2002/95/EC AND AMENDMENT 2005/618/EC FOR HOMOGENEOUS MATERIAL.

(C) TEST METHOD:

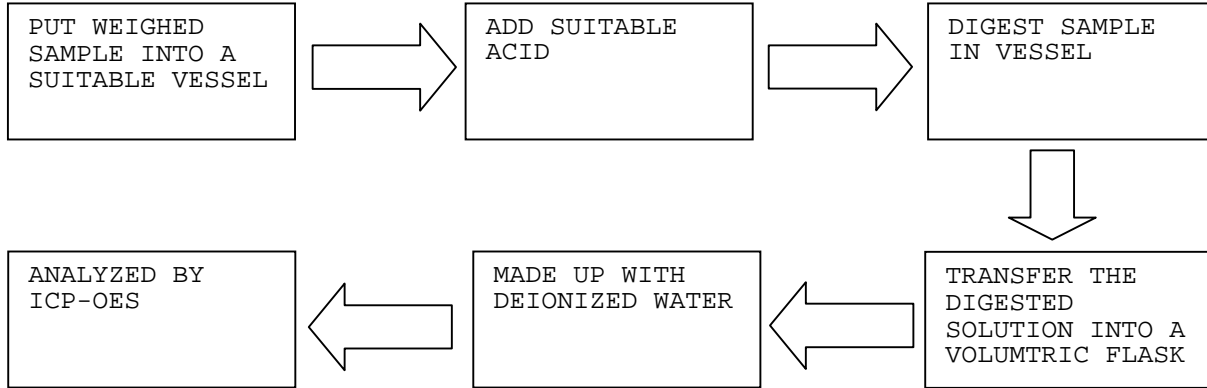
TESTING ITEM	TESTING METHOD	REPORTING LIMIT
CADMIUM (Cd) CONTENT	WITH REFERENCE TO IEC 62321 EDITION 1.0:2008, BY ACID DIGESTION AND DETERMINED BY ICP - OES	2 mg/kg
LEAD (Pb) CONTENT	WITH REFERENCE TO IEC 62321 EDITION 1.0:2008, BY ACID DIGESTION AND DETERMINED BY ICP - OES	2 mg/kg
MERCURY (Hg) CONTENT	WITH REFERENCE TO IEC 62321 EDITION 1.0:2008, BY ACID DIGESTION AND DETERMINED BY ICP - OES	2 mg/kg
CHROMIUM (VI) (Cr ⁶⁺) CONTENT	WITH REFERENCE TO IEC 62321 EDITION 1.0:2008, BY ALKALINE DIGESTION AND DETERMINED BY UV-VIS SPECTROPHOTOMETER	1 mg/kg
POLYBROMINATED BIPHENYLS (PBBs) & POLYBROMINATED DIPHENYL ETHERS (PBDEs)	WITH REFERENCE TO IEC 62321 EDITION 1.0:2008, BY SOLVENT EXTRACTION AND DETERMINED BY GC/MS AND FURTHER HPLC CONFIRMATION WHEN NECESSARY	5 mg/kg

DATE SAMPLE RECEIVED : MAY 17, 2010
TESTING PERIOD : MAY 17, 2010 TO MAY 20, 2010

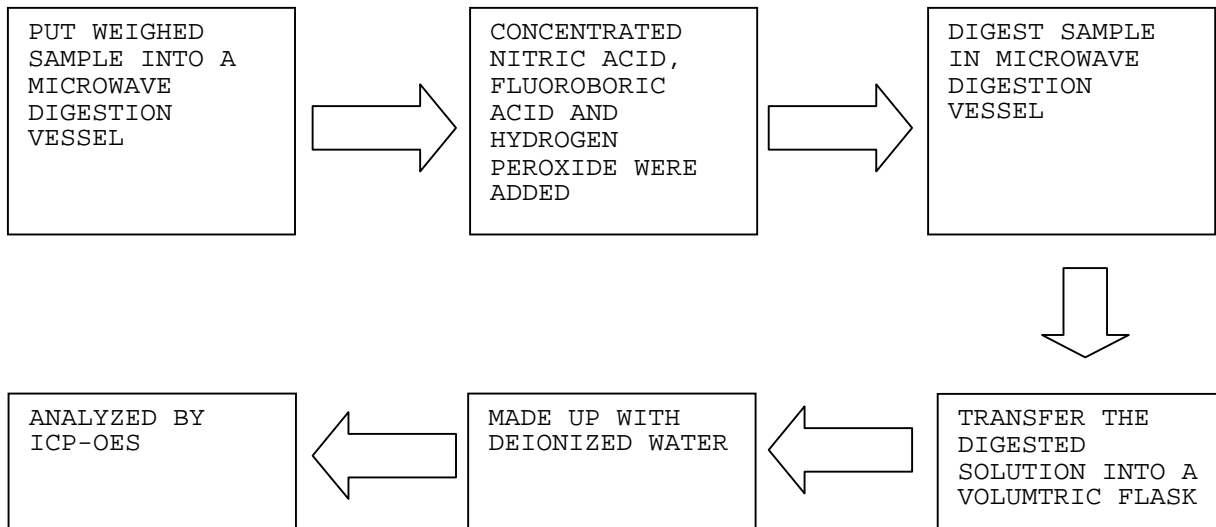
TESTS CONDUCTED

(D) MEASUREMENT FLOWCHART:

1. TEST FOR Cd/Pb CONTENTS

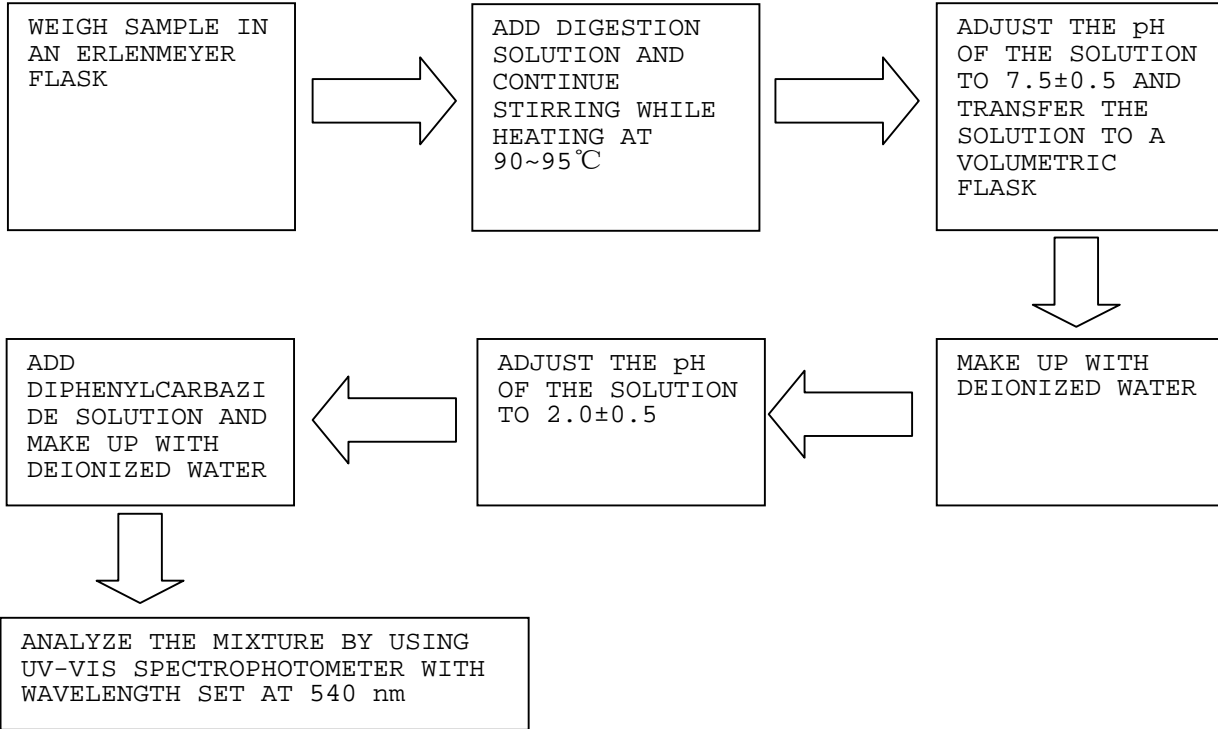


2. TEST FOR Hg CONTENT

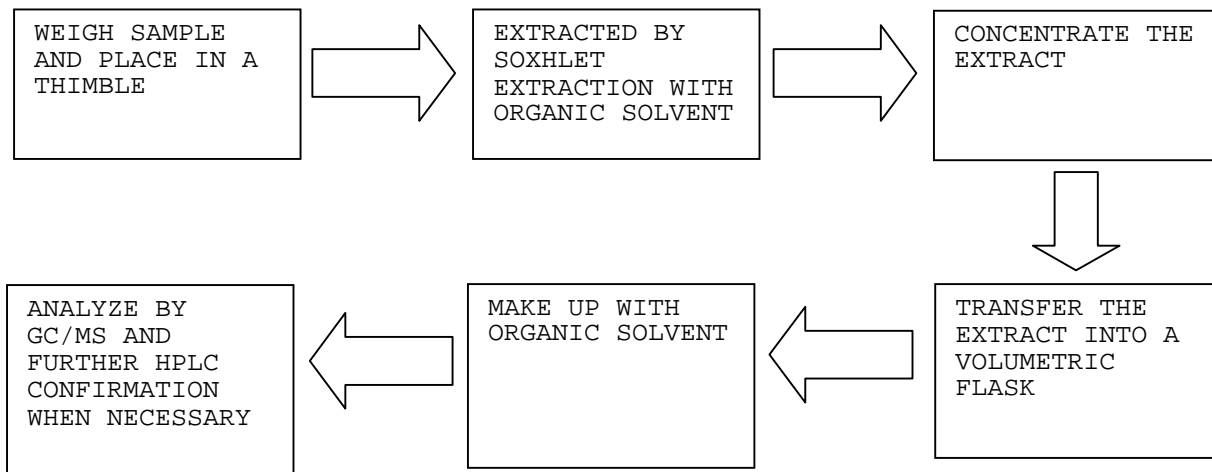


TESTS CONDUCTED

3. TEST FOR CHROMIUM (VI) (Cr⁶⁺) CONTENT (ALKALINE DIGESTION)



4. TEST FOR PBBs/PBDEs CONTENTS





TEST REPORT

NUMBER: SZHH0048757803

TESTS CONDUCTED

2 (I) TEST RESULT SUMMARY :

HALOGEN CONTENT :

<u>TESTING ITEM</u>	<u>RESULT (ppm)</u>
FLUORINE (F) CONTENT	294
CHLORINE (Cl) CONTENT	348
BROMINE (Br) CONTENT	ND
IODINE (I) CONTENT	ND

REMARKS : ppm = PARTS PER MILLION BASED ON DRY WEIGHT OF SAMPLE
 ND = NOT DETECTED

(II) TEST METHOD :

<u>TESTING ITEM</u>	<u>TESTING METHOD</u>	<u>REPORTING LIMIT</u>
HALOGEN (F, Cl, Br, I) CONTENT	WITH REFERENCE TO BS EN 14582:2007 BY CALORIMETRIC BOMB AND DETERMINED BY ION CHROMATOGRAPHY	50 ppm

REMARK : REPORTING LIMIT = QUANTITATION LIMIT OF ANALYTE IN SAMPLE

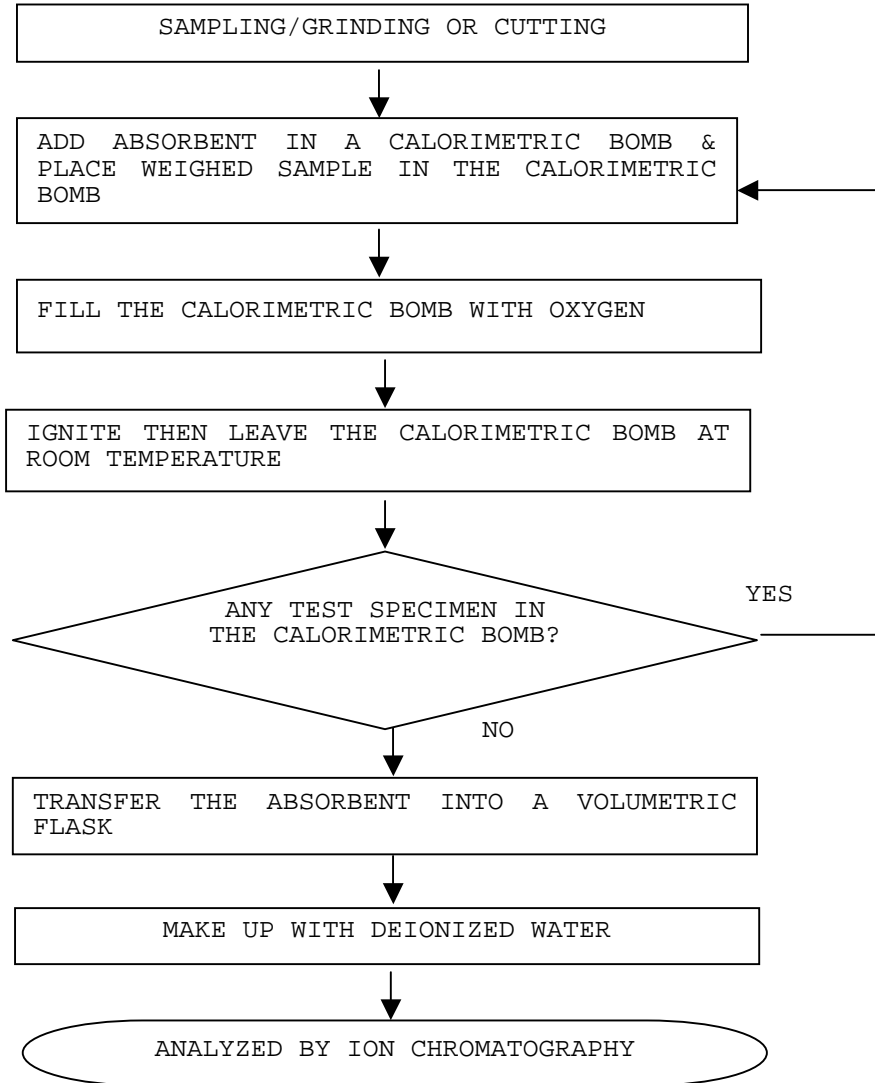
DATE SAMPLE RECEIVED : MAY 17, 2010
 TESTING PERIOD : MAY 17, 2010 TO MAY 20, 2010

TESTS CONDUCTED

(III) MEASUREMENT FLOWCHART:

TEST FOR HALOGEN CONTENT

REFERENCE METHOD: BS EN 14582:2007



END OF REPORT