

---

**MEDIUM  
VOLTAGE  
FUSE  
CATALOG**

---



# Innovation in Circuit Protection

---

## Littelfuse Worldwide

Littelfuse is an international corporation dedicated and committed to serving customers with world over with innovative circuit protection products that consistently surpass commonly accepted performance standards worldwide. With sales, service and distribution centers in the United States, United Kingdom, The Netherlands, Singapore, Japan, Korea, China and Brazil, product accessibility and design support is available to equipment manufacturers, buildings, plants and construction sites around the world.

## Proven Performance

Since the 1920's, Littelfuse has continued to design and manufacture patented circuit protection innovations that are now the standards in the electrical, electronic and automotive industries.

Littelfuse has built a reputation on the firm belief that product quality begins long before the product is manufactured. Following Six Sigma strategies for defect reduction and an aggressive program to certify all its manufacturing facilities, Littelfuse has earned ISO 9001 and 9002 certifications for all its manufacturing locations and QS9000 certification in locations where automotive products are manufactured.

## Product Innovation

Innovative concepts such as the award winning JTD\_ID Class J Indicator™ fuse, the smallest time delay 60 amp CCMR Class CD fuse, and the 600V AC/DC LDC Class L fuse are recent products that are rapidly launching Littelfuse into global electrical circuit protection leadership. Superior electrical, electronic and automotive products, along with the addition of bolt-in and cartridge style medium voltage fuses further solidify Littelfuse's position as the world leader in circuit protection.

## World Headquarters:

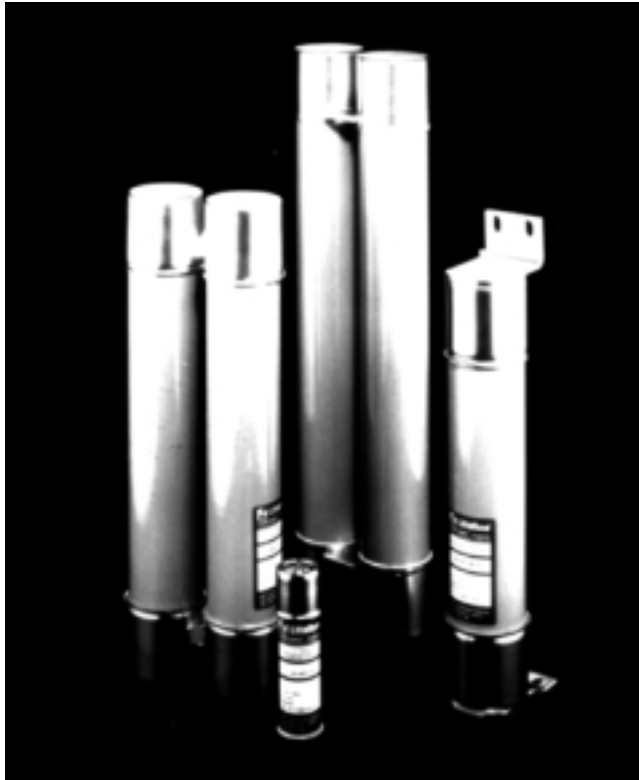
- Littelfuse, Inc.  
800 East Northwest Highway  
Des Plaines, IL 60016 USA  
Phone: +1(847) 824-1188 <http://www.littelfuse.com>

## Research and Manufacturing Facilities:

- Des Plaines, Illinois, USA
- Arcola, Illinois, USA
- Centralia, Illinois, USA
- Grenchen, Switzerland
- Malvar, Philippines
- Piedras Negras, Mexico
- Suzhou, China
- Washington, England
- Watseka, Illinois, USA

## Sales, Distribution and Engineering Facilities:

- Des Plaines, Illinois, USA ..... +1(800) 227-0029 ..... FAX: +1(800) 522-7697
- Farmington Hills, Michigan, USA .. +1(810) 851-8890 ..... FAX: +1(810) 851-5305
- Hong Kong, China ..... + (85) 22-810-5099 ..... FAX: + (85) 22-810-5500
- Ontario, Canada ..... +1(613) 384-4144 ..... FAX: +1(800) 866-7690
- Sao Paulo, Brazil ..... + (55) 11-877-0909 ..... FAX: + (55) 11-876-6690
- Seoul Korea ..... + (82) 2-463-6073 ..... FAX: + (82) 2-463-3273
- Singapore ..... + (65) 746-9666 ..... FAX: + (65) 742-8178
- Utrecht, The Netherlands ..... + (31) 30-299-9900 ..... FAX: + (31) 30-299-9800
- Washington, England ..... + (44) 191-415-8181 ..... FAX: + (44) 191-415-8189
- Yokohama, Japan ..... + (81) 45-478-1088 ..... FAX: + (81) 45-478-1089



Littelfuse now offers a complete selection of “E” and “R” rated medium voltage fuses for the protection of transformers, potential transformers, feeders, and motor circuits. Single, double, and triple barrel designs are available to cover a wide range of current, voltage, and interrupting ratings. Conventional ferrule type, clip lock, and bolt-in mounting configurations are now available for virtually any application. Hermetically sealed fuses for use in hazardous environments are also offered.

Contact the factory or your local Littelfuse representative for additional fuse ratings or custom mounting configurations.

**24 Hour Emergency Service is available.**

Call 1-800-227-0029.

## **APPLICATIONS**

- Power Transformer Protection
- Potential Transformer Protection
- Motor Controller Back-up Protection
- Fused Switches
- Feeder Circuits



Current limiting “E” and “R” rated fuses are equipped with a mechanical indicator or striker pin that protrudes through the fuse cap upon operation of the fuse. This provides visual identification of a blown fuse and can be used as a trigger for external devices.

## **GENERAL INFORMATION**

The terms “Medium Voltage” and “high voltage” have been used interchangeably by many people to describe fuses operating above 600 volts. Technically speaking, “medium voltage” fuses are those intended for the voltage range from 2,400 to 38,000 VAC. “High voltage fuses are for circuits carrying voltages greater than 38,000 VAC.

“E” Rated fuses are considered to be general purpose fuses and can be used to protect against low and high values of fault current. “R” rated fuses are designed for back-up protection. They must be used in series with other devices, such as motor overload relays, in order to achieve both overload and short circuit protection.

Medium voltage fuses are not intended to provide overload protection in the same sense as fuses rated 600 volts or less. Medium voltage fuse current ratings do not have the same meanings as the ampere ratings of low voltage fuses.

All medium voltage fuses are limited in their ability to interrupt low value overcurrents, especially those between 100% and 200% of the fuse's continuous current rating. They are designed to carry their rated current without exceeding the temperature rise permitted by NEMA and ANSI standards.

Additional application data can be found in the Fuse Application section of the POWR-GARD Products catalog (PF101).



**Bolt-in Mount Fuses**

# R Rated Medium Voltage Fuses

Current Limiting

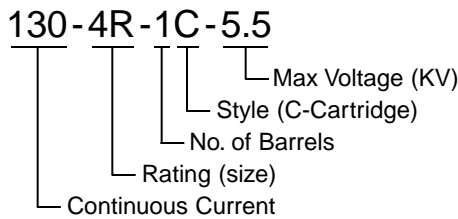


## FEATURES

“R” rated fuses provide required short-circuit protection for medium voltage motors, motor controllers and associated circuitry. These components have limited ability to absorb the energy of large short circuit currents. Medium voltage motor controllers contain overload relays which provide both overload protection and locked rotor protection to the motor. The controllers are also intended to interrupt low value short circuits within the capability of the motor controller. This protects the medium voltage fuse from sustained overcurrents which are less than their minimum interrupting rating.

NEMA Standards for “R” rated medium voltage power fuses require that they operate within 15-35 seconds when subjected to an rms current 100 times the “R” rating. For example, a fuse with a 2R rating will open within 15 to 35 seconds on an applied current of  $2 \times 100 = 200$  amperes.

## Part Number System



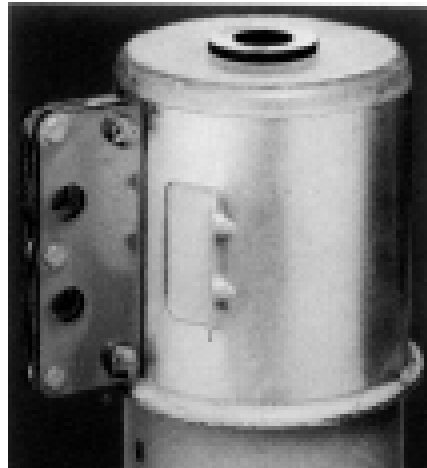
## CHARACTERISTICS

**Voltage Rating:** 2,400 volts – 15,500 volts

**Current Range:** 2R – 36R

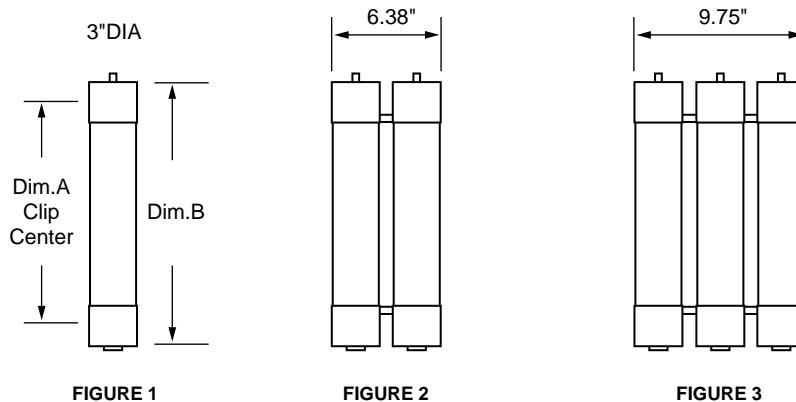
## OPTIONS

- Hermetically sealed for use in hazardous locations (add “S” suffix to part number)
- Hookeye attachment (add “W” suffix to part number)
- Bolt-in mounting configurations



**Hookeye Feature\***

\*For hookeye attachment; add “W” suffix to part number



<b>RATED</b>	Catalog Number	Old Catalog Number	Size	Maximum Continuous Current @ 40 deg C.	Dim. A (inches)	Dim. B (inches)	Minimum Interrupting Rating RMS Amps	Max Interrupting Rating RMS Asym	Figure Number
<b>2.75 KV</b>	70-2R-1C-2.75	LCK 2R	2R	70	7"	10.875"	170	80,000	1
	100-3R-1C-2.75	LCK 3R	3R	100			250	80,000	1
	130-4R-1C-2.75	LCK 4R	4R	130			340	80,000	1
	150-5R-1C-2.75	LCK 5R	5R	150			390	80,000	1
	170-6R-1C-2.75	LCK 6R	6R	170			500	80,000	1
	200-9R-1C-2.75	LCK 9R	9R	200			760	80,000	1
	230-12R-1C-2.75	LCK 12R	12R	230			1000	80,000	1
	390-18R-2C-2.75	LCK 18R	18R	390	7"	10.875"	1500	80,000	2
	450-24R-2C-2.75	LCK 24R	24R	450			1950	80,000	2

Add “w” suffix to part number for hookeye attachment.

# R Rated Medium Voltage Fuses

## Current Limiting

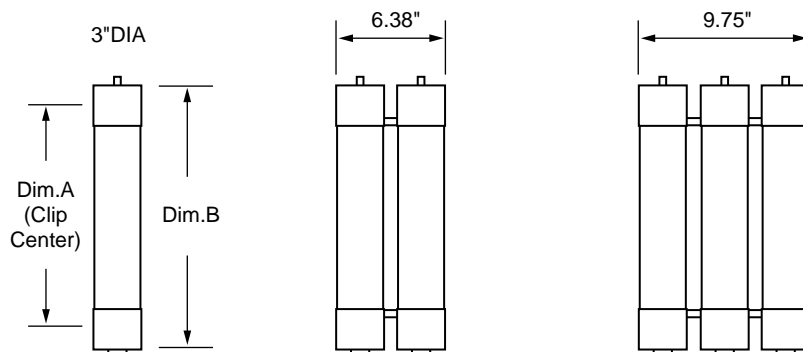


FIGURE 4

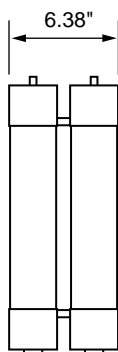


FIGURE 5

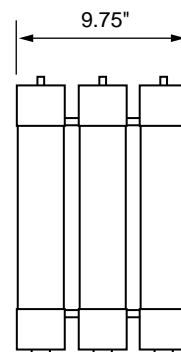


FIGURE 6

<b>R</b> RATED	Catalog Number	Old Catalog Number	Size	Maximum Continuous Current @ 40 deg C.	Dim. A (inches)	Dim. B (inches)	Minimum Interrupting Rating RMS Amps	Max Interrupting Rating RMS (Asym)	Figure Number
<b>5.5 KV</b>	70-2R-1C-5.5	LCL 2R	2R	70	12"	15.875"	170	80,000	4
	100-3R-1C-5.5	LCL 3R	3R	100			250	80,000	4
	130-4R-1C-5.5	LCL 4R	4R	130			340	80,000	4
	150-5R-1C-5.5	LCL 5R	5R	150			390	80,000	4
	170-6R-1C-5.5	LCL 6R	6R	170			500	80,000	4
	200-9R-1C-5.5	LCL 9R	9R	200			760	80,000	4
	230-12R-1C-5.5	LCL 12R	12R	230	1000	80,000	4		
	390-18R-2C-5.5	LCL 18R	18R	390	12"	15.875"	1500	80,000	5
	450-24R-2C-5.5	LCL 24R	24R	450			1950	80,000	5
	480-26R-2C-5.5	—	26R	480			2100	80,000	5
	550-30R-2C-5.5	—	30R	550			2400	80,000	5
	600-32R-2C-5.5	—	32R	600			2600	80,000	5
	650-36R-2C-5.5	—	36R	650	2900	80,000	5		
	550-30R-3C-5.5	—	30R	550	12"	15.875"	2400	80,000	6
	600-32R-3C-5.5	—	32R	600			2600	80,000	6
650-36R-3C-5.5	LCL 36R	36R	650	2900			80,000	6	
<b>5.5 KV</b> 1.4" Clip Centers	70-2R-1C-5.5X	—	2R	70	14"	17.875"	170	80,000	4
	100-3R-1C-5.5X	—	3R	100			250	80,000	4
	130-4R-1C-5.5X	—	4R	130			340	80,000	4
	150-5R-1C-5.5X	—	5R	150			390	80,000	4
	170-6R-1C-5.5X	—	6R	170			500	80,000	4
	200-9R-1C-5.5X	—	9R	200			760	80,000	4
	230-12R-1C-5.5X	—	12R	230	1000	80,000	4		
	390-18R-2C-5.5X	—	18R	390	14"	17.875"	1500	80,000	5
	450-24R-2C-5.5X	—	24R	450			1950	80,000	5

<b>R</b> RATED	Catalog Number	Old Catalog Number	Size	Maximum Continuous Current @ 40 deg C.	Dim. A (inches)	Dim. B (inches)	Minimum Interrupting Rating RMS Amps	Max Interrupting Rating RMS (Asym)	Figure Number
<b>8.25 KV</b>	70-2R-1C-8.25	—	2R	70	12"	15.875"	190	80,000	4
	100-3R-1C-8.25	—	3R	100			225	80,000	4
	130-4R-1C-8.25	—	4R	130			330	80,000	4
	150-5R-1C-8.25	—	5R	150			440	80,000	4
	170-6R-1C-8.25	—	6R	170			500	80,000	4
	200-9R-1C-8.25	—	9R	200			740	80,000	4
	230-12R-1C-8.25	—	12R	230	955	80,000	4		
	390-18R-2C-8.25	—	18R	390	12"	15.875"	1440	80,000	5
	450-24R-2C-8.25	—	24R	450			1910	80,000	5

Add "w" suffix to part number for hooke attachment.

# R Rated Medium Voltage Fuses



## Current Limiting

Littelfuse's POWR-GARD medium voltage fuses are available in several bolt-in mounting configurations. Contact factory for custom configurations

- “B” Bolt mount
- “BI” Bolt-In mount
- “IB” Inverted-Bolt mount

Refer to illustrations for mounting dimensions.

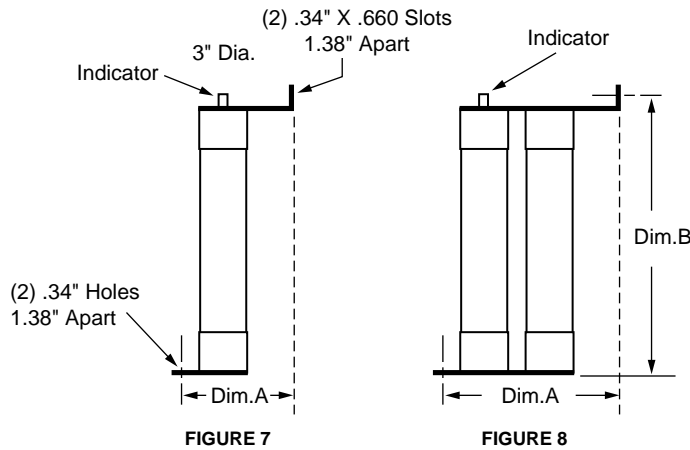


FIGURE 7

FIGURE 8

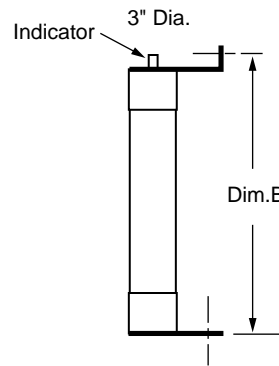


FIGURE 9

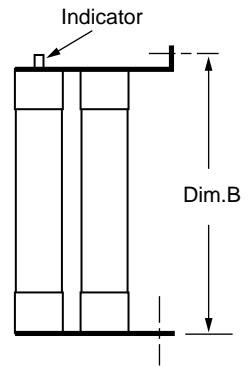


FIGURE 10

**Bolt Mount “B”**

**Inverted Bolt “IB”**

<b>R RATED</b>	Catalog Number	Old Catalog Number	Size	Maximum Continuous Current @ 40 deg C.	Dim. A (inches)	Dim. B (inches)	Minimum Interrupting Rating RMS Amps	Max Interrupting Rating RMS (Asym)	Figure Number			
<b>2.75 KV Bolt Mount “B”</b>	70-2R-1B-2.75	—	2R	70	4.6"	13"	170	80,000	7			
	100-3R-1B-2.75		3R	100			250	80,000	7			
	130-4R-1B-2.75		4R	130			240	80,000	7			
	150-5R-1B-2.75		5R	150			390	80,000	7			
	170-6R-1B-2.75		6R	170			500	80,000	7			
	200-9R-1B-2.75		9R	200			760	80,000	7			
	230-12R-1B-2.75		12R	230			1000	80,000	7			
	390-18R-2B-2.75	—	18R	390	7.4"	13"	1500	80,000	8			
	450-24R-2B-2.75		24R	450			1950	80,000	8			
	<b>2.75 KV Inverted Bolt “IB”</b>	70-2R-1IB-2.75	—	2R	70	—	13"	170	80,000	9		
100-3R-1IB-2.75		3R		100	250			80,000	9			
130-4R-1IB-2.75		4R		130	340			80,000	9			
150-5R-1IB-2.75		5R		150	390			80,000	9			
170-6R-1IB-2.75		6R		170	500			80,000	9			
200-9R-1IB-2.75		9R		200	760			80,000	9			
230-12R-1IB-2.75		12R		230	1000			80,000	9			
390-18R-2IB-2.75		—		18R	390			—	13"	1500	80,000	10
450-24R-2IB-2.75				24R	450					1950	80,000	10

.44" X .91" Slots (1.53" c.t.c.)



Front View

3" Dia.



Dim.A

FIGURE 11

Indicator

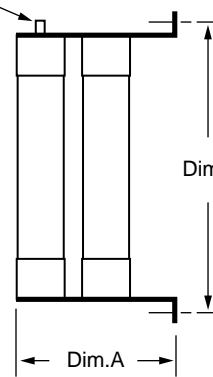


FIGURE 12

Indicator

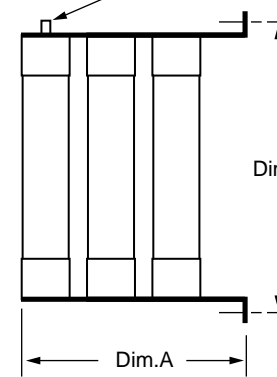


FIGURE 13

**Bolt-In Mount "BI"**

<b>R</b> RATED	Catalog Number	Old Catalog Number	Size	Maximum Continuous Current @ 40 deg C.	Dim. A (inches)	Dim. B (inches)	Minimum Interrupting Rating RMS Amps	Max Interrupting Rating RMS (Asym)	Figure Number
<b>5.5 KV</b> Bolt In Mount "BI"	70-2R-1BI-5.5	—	2R	70	3.6	18"	170	80,000	11
	100-3R-1BI-5.5		3R	100			250	80,000	11
	130-4R-1BI-5.5		4R	130			340	80,000	11
	150-5R-1BI-5.5		5R	150			390	80,000	11
	170-6R-1BI-5.5		6R	170			500	80,000	11
	200-9R-1BI-5.5		9R	200			760	80,000	11
	230-12R-1BI-5.5	12R	230	1000	80,000	11			
	390-18R-2BI-5.5	—	18R	390	7.6	18"	1500	80,000	12
	450-24R-2BI-5.5		24R	450			1950	80,000	12
	480-26R-2BI-5.5		26R	480			2200	80,000	12
	550-30R-2BI-5.5		30R	550			2400	80,000	12
	600-32R-2BI-5.5		32R	600			2650	80,000	12
650-36R-2BI-5.5	36R	650	2900	80,000	12				
550-30R-3BI-5.5	—	30R	550	18"	18"	80,000	80,000	13	
600-32R-3BI-5.5		32R	600			80,000	80,000	13	
650-36R-3BI-5.5		36R	650			80,000	80,000	13	
700-38R-3BI-5.5		38R	700			80,000	80,000	13	
<b>5.5 KV</b> Bolt Mount "B"	70-2R-1B-5.5	—	2R	70	4.6	18"	170	80,000	7
	100-3R-1B-5.5		3R	100			250	80,000	7
	130-4R-1B-5.5		4R	130			340	80,000	7
	150-5R-1B-5.5		5R	150			390	80,000	7
	170-6R-1B-5.5		6R	170			500	80,000	7
	200-9R-1B-5.5		9R	200			760	80,000	7
	230-12R-1B-5.5	12R	230	1000	80,000	7			
	390-18R-2B-5.5	—	18R	390	7.4	18"	1500	80,000	8
	450-24R-2B-5.5		24R	450			1950	80,000	8
	550-30R-2B-5.5		30R	550			2400	80,000	8
600-32R-2B-5.5	32R		600	2650			80,000	8	
650-36R-2B-5.5	36R	650	2900	80,000	8				
<b>5.5 KV</b> Inverted Bolt "IB"	70-2R-1IB-5.5	—	2R	70	—	18"	170	80,000	9
	100-3R-1IB-5.5		3R	100			250	80,000	9
	130-4R-1IB-5.5		4R	130			340	80,000	9
	150-5R-1IB-5.5		5R	150			390	80,000	9
	170-6R-1IB-5.5		6R	170			500	80,000	9
	200-9R-1IB-5.5		9R	200			760	80,000	9
	230-12R-1IB-5.5	12R	230	1000	80,000	9			
	390-18R-2IB-5.5	—	18R	390	—	18"	1500	80,000	10
	450-24R-2IB-5.5		24R	450			1950	80,000	10
	550-30R-2IB-5.5		30R	550			2400	80,000	10
600-32R-2IB-5.5	32R		600	2650			80,000	10	
650-36R-2IB-5.5	36R	650	2900	80,000	10				
<b>8.25 KV</b> Bolt-In Mount "BI"	70-2R-1BI-8.25	—	2R	70	3.6	18"	190	80,000	11
	100-3R-1BI-8.25		3R	100			225	80,000	11
	130-4R-1BI-8.25		4R	130			330	80,000	11
	150-5R-1BI-8.25		5R	150			400	80,000	11
	170-6R-1BI-8.25		6R	170			500	80,000	11
	200-9R-1BI-8.25		9R	200			740	80,000	11
	230-12R-1BI-8.25	12R	230	955	80,000	11			
	390-18R-2BI-8.25	—	18R	390	7.6	18"	1440	80,000	12
	450-24R-2BI-8.25		24R	450			1910	80,000	12

# E Rated Medium Voltage Fuses

## Current Limiting

“E” Rated fuses have time current characteristics designed to provide current limiting protection for power transformers, potential transformers, power centers, feeder centers, and unit sub stations. When properly applied, they can protect against high and low value fault currents.

NEMA Standards for “E” rated medium voltage fuses require that fuses rated 100E or less open within 300 seconds (5 minutes) when subjected to an RMS value of 200-240% of the fuse’s continuous current rating; and fuses with an “E” rating larger than 100E must open within 600 seconds (10 minutes) when subjected to an rms current of 220-240% of the fuse’s continuous current rating. These values establish one point on the time-current curve.

### Application Note:

Since these fuses are used for the protection of general purpose circuits which may contain transformers, motors, and other equipment producing inrush and/or overload currents, fuses should generally be rated at 140% of the normal full load current, and circuits should be analyzed to ensure that system load currents will not exceed the current rating of the fuse.

### CHARACTERISTICS

**Voltage Rating:** 2,400 volts – 38,000 volts

**Current Range:** 10E – 600E

### OPTIONS

- Hermetically Sealed for use in hazardous locations (add “S” suffix to part number)
- Clip-lock (CL) and bolt-in styles available.

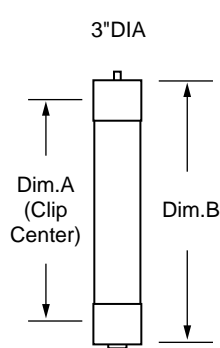


FIGURE 14

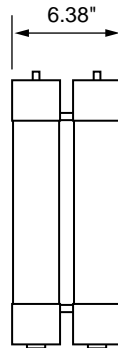


FIGURE 15

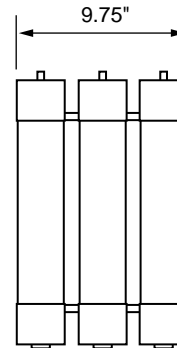


FIGURE 16

E RATED	Catalog Number	Old Catalog Number	Size	Dim. A (inches)	Dim. B (inches)	Max Interrupting Rating RMS (Asym)	Figure Number
2.75 Max. KV	10E-1C-2.75	LCX 10E	10E	7"	10.875"	80,000	14
	15E-1C-2.75	—	15E				14
	20E-1C-2.75	—	20E				14
	25E-1C-2.75	—	25E				14
	30E-1C-2.75	LCX 30E	30E				14
	40E-1C-2.75	LCX 40E	40E				14
	50E-1C-2.75	LCX 50E	50E				14
	65E-1C-2.75	LCX 65E	65E				14
	80E-1C-2.75	LCX 80E	80E				14
	100E-1C-2.75	LCX 100E	100E				14
	125E-1C-2.75	—	125E				14
	150E-1C-2.75	—	150E				14
	200E-1C-2.75	—	200E	14			
	125E-2C-2.75	LCX 125E	125E	7"	10.875"	80,000	15
	150E-2C-2.75	LCX 150E	150E				15
	175E-2C-2.75	LCX 175E	175E				15
	200E-2C-2.75	LCX 200E	200E				15
	225E-2C-2.75	—	225E				15
	250E-2C-2.75	LCX 250E	250E				15
	300E-2C-2.75	LCX 300E	300E				15
	350E-2C-2.75	—	350E				15
	400E-2C-2.75	LCX 400E	400E				15
450E-2C-2.75	—	450E	15				

# E Rated Medium Voltage Fuses

Current Limiting



<b>E</b> <b>RATED</b>	<b>Catalog Number</b>	<b>Old Catalog Number</b>	<b>Size</b>	<b>Dim. A (inches)</b>	<b>Dim. B (inches)</b>	<b>Max Interrupting Rating RMS (Asym)</b>	<b>Diagram</b>				
<b>5.5 Max. KV</b>	10E-1C-5.5	—	10E	12"	15.875"	80,000	14				
	15E-1C-5.5	—	15E				14				
	20E-1C-5.5	—	20E				14				
	25E-1C-5.5	—	25E				14				
	30E-1C-5.5	LCY 30E	30E				14				
	40E-1C-5.5	LCY 40E	40E				14				
	50E-1C-5.5	LCY 50E	50E				14				
	65E-1C-5.5	LCY 60E	65E				14				
	80E-1C-5.5	LCY 80E	80E				14				
	100E-1C-5.5	LCY 100E	100E				14				
	125E-1C-5.5	LCY 125E	125E				14				
	150E-1C-5.5	LCY 150E	150E				14				
	175E-1C-5.5	LCY 175E	175E				14				
	200E-1C-5.5	LCY 200E	200E				14				
	125E-2C-5.5	—	125E	12"	15.875"	80,000	15				
	150E-2C-5.5	—	150E				15				
	175E-2C-5.5	—	175E				15				
	200E-2C-5.5	—	200E				15				
	250E-2C-5.5	LCY 250E	250E				15				
	300E-2C-5.5	LCY 300E	300E				15				
	350E-2C-5.5	LCY 350E	350E				15				
	400E-2C-5.5	LCY 400E	400E	15							
	450E-2C-5.5	LCY 450E	450E	15							
	500E-3C-5.5	—	500E	12"	15.875"	80,000	16				
	550E-3C-5.5	—	550E				16				
	600E-3C-5.5	—	660E				16				
	<b>5.5 Max. KV</b>	5NLE-10E	LCU 30E	10E	14	17-7/8"	80,000	14			
		5NLE-15E		15E				14			
5NLE-20E		20E		14							
5NLE-25E		25E		14							
5NLE-30E		30E		14							
5NLE-40E		LCU 40E		40E				14			
5NLE-50E		LCU 50E		50E				14			
5NLE-65E		LCU 65E		65E				14			
5NLE-80E		LCU 80E		80E				14			
5NLE-100E		LCU 100E		100E				14			
5NLE-125E		LCU 125E		125E				14			
5NLE-150E		LCU 150E		150E				14			
5NLE-175E		LCU 175E		175E				14			
5NLE-200E		LCU 200E		200E				14			
5NLE2-225E		LCU 250E		225E				14"	17-7/8"	80,000	15
5NLE2-250E				250E							15
5NLE2-300E			LCU 300E	300E	15						
5NLE2-350E			LCU 350E	350E	15						
5NLE2-400E			LCU 400E	400E	15						
5NLE2-450E			LCU 450E	450E	15						

# E Rated Medium Voltage Fuses


Current Limiting





<b>RATED</b>	<b>Catalog Number</b>	<b>Old Catalog Number</b>	<b>Size</b>	<b>Dim. A (inches)</b>	<b>Dim. B (inches)</b>	<b>Max Interrupting Rating RMS (Asym)</b>	<b>Diagram</b>			
<b>8.25 Max. KV</b>	10E-1C-8.25		10E	12"	15-7/8"	80,000	14			
	15E-1C-8.25		15E				14			
	20E-1C-8.25		20E				14			
	25E-1C-8.25		25E				14			
	30E-1C-8.25	LDZ 30E	30E				14			
	40E-1C-8.25	LDZ 40E	40E				14			
	50E-1C-8.25	LDZ 50E	50E				14			
	65E-1C-8.25	LDZ 65E	65E				14			
	80E-1C-8.25	LDZ 80E	80E				14			
	100E-1C-8.25	LDZ 100E	100E				14			
	125E-1C-8.25	LDZ 125E	125E				14			
	150E-1C-8.25	LDZ 150E	150E				14			
	125E-2C-8.25	LDZ 125E	125E				12"	15-7/8"	80,000	15
	150E-2C-8.25	LDZ 150E	150E							15
	200E-2C-8.25	LDZ 200E	200E							15
250E-2C-8.25	LDZ 250E	250E	15							
300E-2C-8.25	LDZ 300E	300E	15							
350E-3C-8.25	LDZ 350Z	350E	12"	15-7/8"	80,000	16				
400E-3C-8.25		400E				16				

<b>8.25 Max. KV</b>	8NLE-10E		10E	14"	17-7/8"	80,000	14			
	8NLE-15E		15E				14			
	8NLE-20E		20E				14			
	8NLE-25E		25E				14			
	8NLE-30E	LCZ 30E	30E				14			
	8NLE-40E	LCZ 40E	40E				14			
	8NLE-50E	LCZ 50E	50E				14			
	8NLE-65E	LCZ 65E	65E				14			
	8NLE-80E	LCZ 80E	80E				14			
	8NLE-100E	LCZ 100E	100E				14			
	8NLE2-100E	LCZ 100E	100E				14"	17-7/8"	80,000	15
	8NLE2-125E	LCZ 125E	125E							15
	8NLE2-150E	LCZ 150E	150E							15
	8NLE2-200E	LCZ 200E	200E							15
	8NLE2-250E		250E							15

<b>RATED</b>	<b>Catalog Number</b>	<b>Old Catalog Number</b>	<b>Size</b>	<b>Dim. A (inches)</b>	<b>Dim. B (inches)</b>	<b>Max Interrupting Rating RMS (Asym)</b>	<b>Figure Number</b>			
<b>15.5 Max. KV</b>	10E-1C-15.5	LDN 10E	10E	15"	18.875"	60,000	14			
	15E-1C-15.5	LDN 15E	15E				14			
	20E-1C-15.5	LDN 20E	20E				14			
	25E-1C-15.5	LDN 25E	25E				14			
	30E-1C-15.5	LDN 30E	30E				14			
	40E-1C-15.5	LDN 40E	40E				14			
	50E-1C-15.5	LDN 50E	50E				14			
	65E-1C-15.5	LDN 65E	65E				14			
	80E-1C-15.5	LDN 80E	80E				14			
	100E-1C-15.5	LDN 100E	100E				14			
	65E-2C-15.5		65E				15"	18.875"	60,000	15
	80E-2C-15.5		80E							15
	100E-2C-15.5		100E							15
	125E-2C-15.5		125E							15
	150E-2C-15.5	LDN 150E	150E							15
	175E-2C-15.5	LDN 175E	175E	15						
	200E-2C-15.5		200E	15						
	200E-3C-15.5		200E	15"	18.875"	60,000	16			
	250E-3C-15.5		250E				16			
	300E-3C-15.5		300E				16			

 RATED	Catalog Number	Old Catalog Number	Size	Dim. A (inches)	Dim. B (inches)	Max Interrupting Rating RMS (Asym)	Figure Number			
15.5 Max. KV	15GSE-65E		65E	18"	21-7/8"	60,000	14			
	15GSE-80E		80E				14			
	15GSE-100E		100E				14			
	15GSE2-125E		125E	18"	21-7/8"	60,000	15			
	15GSE2-150E		150E				15			
	15GSE2-175E		175E				15			
15GSE2-200E		200E	15							
15.5 Max. KV	15NLE-10E		10E	20"	23-7/8"	60,000	14			
	15NLE-15E		15E				14			
	15NLE-20E		20E				14			
	15NLE-25E		25E				14			
	15NLE-30E	LCN 30E	30E				14			
	15NLE-40E	LCN 40E	40E				14			
	15NLE-50E	LCN 50E	50E				14			
	15NLE-65E	LCN 65E	65E				14			
	15NLE-80E	LCN 80ES	80E				14			
	15NLE-100E	LCN 100ES	100E				14			
	15NLE2-80E	LCN 80E	80E				20"	23-7/8"	60,000	15
	15NLE2-100E	LCN 100E	100E							15
	15NLE2-125E	LCN 125X	125E	15						
	15NLE2-150E	LCN 150E	150E	15						
	15NLE2-175E		175E	15						
	15NLE2-200E	LCN 200ED	200E	15						
	15NLE3-150E		150E	20"	23-7/8"	60,000	16			
	15NLE3-175E		175E				16			
15NLE3-250E		250E	16							
15NLE3-300E		300E	16							

 RATED	Catalog Number	Old Catalog Number	Size	Dim. A (inches)	Dim. B (inches)	Max Interrupting Rating RMS (Asym)	Figure Number
25.8 Max. KV	15E-1C-25.8		15E	21"	24-5/8"	40,000	14
	20E-1C-25.8		20E				14
	25E-1C-25.8		25E				14
	30E-1C-25.8	—	30E				14
	40E-1C-25.8		40E				14
	50E-1C-25.8		50E				14
	65E-2C-25.8		65E	21"	24-5/8"	40,000	15
	80E-2C-25.8	—	80E				15
	100E-2C-25.8		100E				15

 RATED	Catalog Number	Old Catalog Number	Size	Dim. A (inches)	Dim. B (inches)	Max Interrupting Rating RMS (Asym)	Figure Number
38 Max. KV	3E-1C-38.0		3E	27"	30-5/8"	20,000	14
	7E-1C-38.0		7E				14
	10E-1C-38.0		10E				14
	15E-1C-38.0		15E				14
	20E-1C-38.0	—	20E				14
	25E-1C-38.0		25E				14
	30E-1C-38.0		30E				14
	40E-1C-38.0		40E				14
	50E-2C-38.0		50E				27"
	65E-2C-38.0	—	65E	15			
	80E-2C-38.0		80E	15			

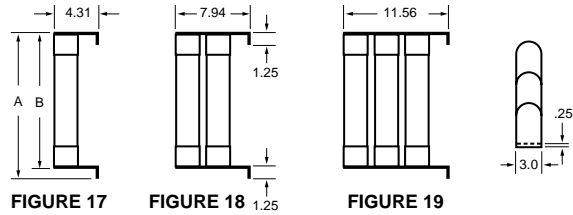
# E Rated Medium Voltage Fuses

## Current Limiting



### Clip Lock Design

The clip lock type design ensures a positive contact between the fuse and the connection cam. The fuse's clip lock tab slides in between the clip casting and the cam to prevent the fuse from slipping or blowing out of the holder. This positive contact improves heat dissipation and allows fuses to run cooler.



<b>RATED</b>	Catalog Number	Old Catalog Number	Size	Dim. A (inches)	Dim. B (inches)	Max Interrupting Rating RMS (Asym)	Figure Number			
<b>5.5 Max. KV</b> Clip Lock	10E-1CL-5.5	—	10E	16.38"	15.13"	80,000	17			
	15E-1CL-5.5		15E				17			
	20E-1C-5.5		20E				17			
	25E-1CL-5.5		25E				17			
	30E-1CL-5.5		30E				17			
	40E-1CL-5.5		40E				17			
	50E-1CL-5.5		50E				17			
	65E-1CL-5.5		65E				17			
	80E-1CL-5.5		80E				17			
	100E-1CL-5.5		100E				17			
	125E-1CL-5.5		125E				17			
	150E-1CL-5.5		150E				17			
	225E-2CL-5.5		225E				17.38"	16.13"	80,000	18
	250E-2CL-5.5		250E							18
	300E-2CL-5.5		300E							18
	350E-2CL-5.5	350E	18							
	400E-2CL-5.5	400E	18							
	450E-2CL-5.5	450E	18							
500E-3CL-5.5	500E	17.38"	16.13"	80,000	19					
550E-3CL-5.5	550E				19					
600E-3CL-5.5	600E				19					

<b>RATED</b>	Catalog Number	Old Catalog Number	Size	Dim. A (inches)	Dim. B (inches)	Max Interrupting Rating RMS (Asym)	Figure Number
<b>8.25 Max. KV</b> Clip Lock	10E-1CL-8.25	—	10E	17.38"	16.13"	80,000	17
	15E-1CL-8.25		15E				17
	20E-1C-8.25		20E				17
	25E-1CL-8.25		25E				17
	30E-1CL-8.25		30E				17
	40E-1CL-8.25		40E				17
	50E-1CL-8.25		50E				17
	65E-1CL-8.25		65E				17
	80E-1CL-8.25		80E				17
	100E-1CL-8.25		100E				17
	125E-2CL-8.25	125E	17.38"	16.13"	80,000	18	
	150E-2CL-8.25	150E				18	
	175E-2CL-8.25	175E				18	
	200E-2CL-8.25	200E				18	
	225E-2CL-8.25	225E				18	
	250E-2CL-8.25	250E				18	
	300E-2CL-8.25	300E				18	
	350E-3CL-8.25	350E				19	

<b>RATED</b>	Catalog Number	Old Catalog Number	Size	Dim. A (inches)	Dim. B (inches)	Max Interrupting Rating RMS (Asym)	Figure Number
<b>15.5 Max. KV</b> Clip Lock	10E-1CL-15.5	—	10E	19.8"	18.1"	60,000	17
	15E-1CL-15.5		15E				17
	20E-1CL-15.5		20E				17
	25E-1CL-15.5		25E				17
	30E-1CL-15.5		30E				17
	40E-1CL-15.5		40E				17
	50E-1CL-15.5	50E	17				
	65E-1CL-15.5	65E	22.81"	21.13"	60,000	17	
	80E-1CL-15.5	80E				17	
	100E-1CL-15.5	100E				17	
	125E-2CL-15.5	125E	22.81"	19.1"	60,000	18	
	150E-3CL-15.5	150E	22.81"	19.1"	60,000	19	
	175E-3CL-15.5	175E				19	
	200E-3CL-15.5	200E				19	
	225E-3CL-15.5	225E				19	
250E-3CL-15.5	250E	19					
300E-3CL-15.5	300E	19					

# E Rated Potential Transformer Fuses

## Current Limiting

Potential Transformer (PT) fuses are current limiting fuses with high interrupting ratings designed for the protection of potential transformers.

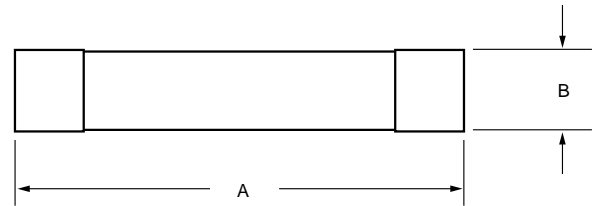
### Application Note:

When applying fuses for the protection of transformers, the magnetizing current inrush must be considered. The characteristics of the inrush, which can be matched with a fuse's time-current curve, should be available from the transformer manufacturer.

### CHARACTERISTICS

**Voltage Rating:** 600VAC – 25,500 VAC

**Current Range:** 1/2E – 10E



PT	Catalog Number	Old Catalog Number	Size	Length Dim. A (inches)	Diameter Dim. B (inches)	Max Interrupting Rating RMS (Asym)
600 Volt	3E-4PT-6		3E	4.625	0.8125	62,500
	5E-4PT-6		5E	4.625	0.8125	62,500
	7E-4PT-6		7E	4.625	0.8125	62,500
	10E-4PT-6		10E	4.625	0.8125	62,500
2.4 Max. KV	1E-4PT-2.4	LCD 1E-4	1E	4.625	0.8125	40,000
	2E-4PT-2.4	LCD 2E-4	2E	4.625	0.8125	40,000
2.75 Max. KV	1E-6PT-2.75		1E	7.375	1.625	37,500
	2E-6PT-2.75		2E	7.375	1.625	37,500
	3E-6PT-2.75		3E	7.375	1.625	37,500
2.75 Max. KV	1E-8PT-2.75		1E	9.5	1.625	50,000
	2E-8PT-2.75		2E	9.5	1.625	50,000
	3E-8PT-2.75		3E	9.5	1.625	50,000
4.8 Max. KV	1E-5PT-4.8	LCE 1E-4	1E	5.5	0.8125	50,000
	2E-5PT-4.8	LCE 2E-4	2E	5.5	0.8125	50,000
5.5 Max. KV	1/2E-6PT-5.5		1/2E	7.375	1.625	37,500
	1E-6PT-5.5		1E	7.375	1.625	37,500
	2E-6PT-5.5		2E	7.375	1.625	37,500
	3E-6PT-5.5		3E	7.375	1.625	37,500
	5E-6PT-5.5		5E	7.375	1.625	37,500
	1/2E-8PT-5.5	LCQ .5E	1/2E	9.5	1.625	37,500
5.5 Max. KV	1E-8PT-5.5	LCQ 1E	1E	9.5	1.625	37,500
	2E-8PT-5.5	LCQ 2E	2E	9.5	1.625	37,500
	3E-8PT-5.5	LCQ 3E	3E	9.5	1.625	37,500
	5E-8PT-5.5	LCQ 5E	5E	9.5	1.625	37,500
	10E-8PT-5.5	LCQ 10E	10E	9.5	1.625	37,500
	8.25 Max. KV	1/2E-8PT-8.25		1/2E	9.5	1.625
1E-8PT-8.25			1E	9.5	1.625	50,000
2E-8PT-8.25			2E	9.5	1.625	50,000
3E-8PT-8.25			3E	9.5	1.625	50,000
15.5 Max. KV	1/2E-11PT-15.5	LCT .5E	1/2E	12.875	1.625	80,000
	1E-11PT-15.5	LCT 1E	1E	12.875	1.625	80,000
	2E-11PT-15.5	LCT 2E	2E	12.875	1.625	80,000
	3E-11PT-15.5	LCT 3E	3E	12.875	1.625	80,000
	3E-16PT-15.5		3E	17.5	1.625	80,000
25.5 Max. KV	1/2E-16PT-25.5	LCJ 1E-4	1/2E	17.5	1.625	43,500
	1E-16PT-25.5	LCJ 2E-4	1E	17.5	1.625	43,500

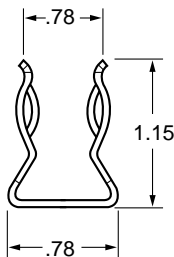
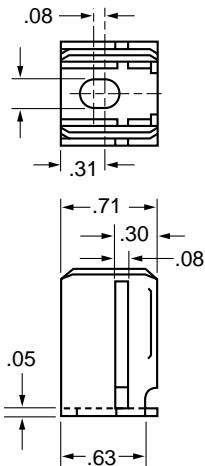


Live parts are available for mounting "E", "R", and "PT" single, double, and triple barrel fuses. Mounting clips are available for ferrule type and clip lock style fuses. All clips are sold in pairs.

Contact factory for additional live parts.

### Part Number: 700-500\*

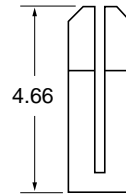
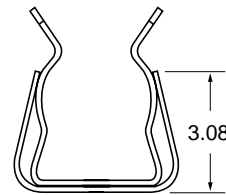
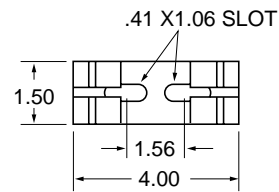
For use with all 13/16" diameter PT fuses.



\* One Pair

### Part Number: 700-530\*

For use with all 3" diameter fuses.

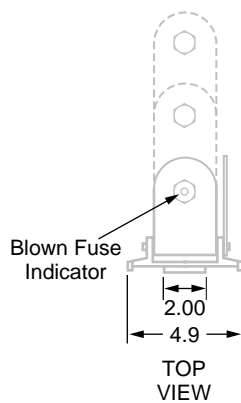
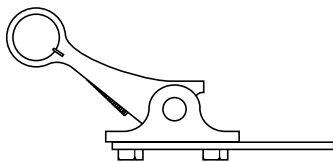


\* One Pair

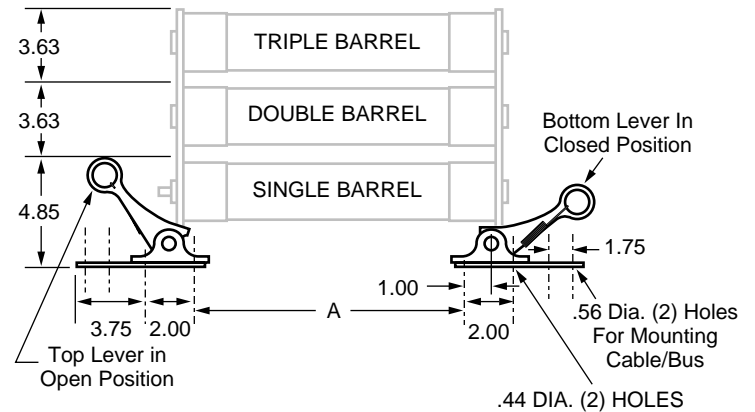
### Part Number: 700-520-CL\*

Clip Lock Design (For CL-14)

#### Mounting Details for Clip Lock



\* One Pair



This cross reference covers all known competitive part numbers of medium voltage fuses for which there is an electrically and mechanically similar Littelfuse standard item. Furnished for your convenience, this cross reference is meant to serve as a guide only for product selection.

Because of possible variations between Littelfuse products and those of other fuse manufacturers, we suggest you check all applicable specifications before a substitution is made. Since actual performance is dependent upon specific application parameters, Littelfuse cannot accept responsibility for any misapplication of our product.

If the Littelfuse equivalent does not appear in the cross reference, an alternative may be available. Please contact the factory.

For information on Littelfuse fuses, fuseholders, fuse clips, fuse blocks, circuit breakers, indicator lights and switches, please contact us for complete catalogs.

---

**For customer service on medium voltage fuses, call:**

Littelfuse, Inc.  
**1-800-227-0029**  
**1-800-522-POWR (FAX)**

---

**For technical information on medium voltage fuses, call:**

Littelfuse, Inc.  
**1-800-TEC-FUSE**  
**(1-800-832-3873)**

Littelfuse POWR-GARD Products  
fax-on-demand information center.  
Call 24-hours a day for product information.

***Also, be sure to visit us on the web! [www.littelfuse.com](http://www.littelfuse.com)***

# Cross Reference



Competition	Littelfuse	Competition	Littelfuse	Competition	Littelfuse
1/2E-11PT-15.5	1/2E-11PT-15.5	125E5	125E-2C-5.5	150E-2CL-8.25	150E-2CL-8.25
1/2E-16PT-25.5	1/2E-16PT-25.5	129D686G01	450-24R-2C-5.5W	150E-3CL-15.5	150E-3CL-15.5
1/2E-6PT-5.5	1/2E-6PT-5.5	129D686G02	390-18R-2C-5.5W	150E5	150E-2C-5.5
1/2E-8PT-5.5	1/2E-8PT-5.5	129D696G01	70-2R-1C-5.5W	151D207G01	480-26R-2C-5.5W
1/2E-8PT-8.25	1/2E-8PT-8.25	129D696G02	100-3R-1C-5.5W	151D240G02	70-2R-1C-5.5SW
100-3M-1C-2.75	100-3R-1C-2.75	129D696G03	130-4R-1C-5.5W	151D240G03	100-3R-1C-5.5SW
100-3M-1C-5.5	100-3R-1C-5.5	129D696G04	150-5R-1C-5.5W	151D240G04	130-4R-1C-5.5SW
100-3R-1B-2.75	100-3R-1B-2.75	129D696G05	170-6R-1C-5.5W	151D240G05	150-5R-1C-5.5SW
100-3R-1B-5.5	100-3R-1B-5.5	129D696G06	200-9R-1C-5.5W	151D240G06	170-6R-1C-5.5SW
100-3R-1BI-5.5	100-3R-1BI-5.5	129D696G07	230-12R-1C-5.5W	151D241G02	70-2R-1C-5.5
100-3R-1BI-8.25	100-3R-1BI-8.25	12R2	230-12R-1C-2.75	151D241G03	100-3R-1C-5.5
100-3R-1C-2.75	100-3R-1C-2.75	12R5	230-12R-1C-5.5	151D241G04	130-4R-1C-5.5
100-3R-1C-2.75	100-3R-1C-2.75	130-4M-1C-2.75	130-4R-1C-2.75	151D241G05	150-5R-1C-5.5
100-3R-1C-2.75WE	100-3R-1C-2.75W	130-4M-1C-5.5	130-4R-1C-5.5	151D241G06	170-6R-1C-5.5
100-3R-1C-5.5	100-3R-1C-5.5	130-4R-1B-2.75	130-4R-1B-2.75	151D933G01	200-9R-1C-5.5W
100-3R-1C-5.5EXT	100-3R-1C-5.5X	130-4R-1B-5.5	130-4R-1B-5.5	151D933G02	230-12R-1C-5.5W
100-3R-1C-5.5EXTWE	100-3R-1C-5.5XW	130-4R-1BI-5.5	130-4R-1BI-5.5	151D933G03	390-18R-2C-5.5W
100-3R-1C-5.5WE	100-3R-1C-5.5W	130-4R-1BI-8.25	130-4R-1BI-8.25	151D933G04	450-24R-2C-5.5W
100-3R-1C-8.25	100-3R-1C-8.25	130-4R-1C-2.75	130-4R-1C-2.75	151D961G01	200-9R-1C-5.5
100-3R-1C-8.25WE	100-3R-1C-8.25W	130-4R-1C-2.75	130-4R-1C-2.75	151D961G02	230-12R-1C-5.5
100-3R-1IB-2.75	100-3R-1IB-2.75	130-4R-1C-2.75WE	130-4R-1C-2.75W	151D961G03	390-18R-2C-5.5
100-3R-1IB-5.5	100-3R-1IB-5.5	130-4R-1C-5.5	130-4R-1C-5.5	151D961G04	450-24R-2C-5.5
100E14	100E-2C-15.5	130-4R-1C-5.5	130-4R-1C-5.5	151D962G01	200-9R-1C-5.5-SW
100E-1C-15.5	100E-1C-15.5	130-4R-1C-5.5EXT	130-4R-1C-5.5X	151D962G02	230-12R-1C-5.5SW
100E-1C-2.75	100E-1C-2.75	130-4R-1C-5.5EXTWE	130-4R-1C-5.5XW	151D962G03	390-18R-2C-5.5SW
100E-1C-5.5	100E-1C-5.5	130-4R-1C-5.5WE	130-4R-1C-5.5W	151D962G04	450-24R-2C-5.5SW
100E-1C-5.5WE	100E-1C-5.5W	130-4R-1C-8.25	130-4R-1C-8.25	151D963G01	70-2R-1C-8.25W
100E-1C-8.25	100E-1C-8.25	130-4R-1C-8.25WE	130-4R-1C-8.25W	151D963G02	100-3R-1C-8.25W
100E-1CL-15.5	100E-1CL-15.5	130-4R-1IB-2.75	130-4R-1IB-2.75	151D963G03	130-4R-1C-8.25W
100E-1CL-5.5	100E-1CL-5.5	130-4R-1IB-5.5	130-4R-1IB-5.5	151D963G04	150-5R-1C-8.25W
100E-1CL-8.25	100E-1CL-8.25	1392539	130-4R-1C-2.75	151D963G05	170-6R-1C-8.25W
100E-2C-15.5	100E-2C-15.5	1392540	170-6R-1C-2.75	151D963G06	200-9R-1C-8.25W
100E-2C-25.8	100E-2C-25.8	1392541	200-9R-1C-2.75	151D963G07	230-12R-1C-8.25W
100E5	100E-1C-5.5	1392542	230-12R-1C-2.75	151D963G10	390-18R-2C-8.25W
103L750G11	1/2E-8PT-5.5	140D045G02	650-36R-2C-5.5W	151D963G11	450-24R-2C-8.25SW
103L750G13	1E-8PT-5.5	15.5CAVH.5E	1/2E-11PT-15.5	151D978G01	30E-1C-5.5
103L750G15	1/2E-8PT-8.25	15.5CAVH1E	1E-11PT-15.5	151D978G02	50E-1C-5.5
103L750G19	1/2E-11PT-15.5	15.5CAVH3E	3E-11PT-15.5	151D978G03	65E-1C-5.5
103L750G20	1E-11PT-15.5	150-5R-1B-5.5	150-5R-1B-5.5	151D978G04	80E-1C-5.5
10E-1C-15.5	10E-1C-15.5	150-5R-1BI-5.5	150-5R-1BI-5.5	151D978G05	100E-1C-5.5
10E-1C-2.75	10E-1C-2.75	150-5R-1BI-8.25	150-5R-1BI-8.25	151D978G06	125E-1C-5.5
10E-1C-38.0	10E-1C-38.0	150-5R-1C-2.75	150-5R-1C-2.75	151D978G07	150E-1C-5.5
10E-1C-5.5	10E-1C-5.5	150-5R-1C-2.75WE	150-5R-1C-2.75W	151D978G08	200E-1C-5.5
10E-1C-8.25	10E-1C-8.25	150-5R-1C-5.5	150-5R-1C-5.5	151D978G09	225E-2C-5.5
10E-1CL-15.5	10E-1CL-15.5	150-5R-1C-5.5EXT	150-5R-1C-5.5X	151D978G11	250E-2C-5.5
10E-1CL-5.5	10E-1CL-5.5	150-5R-1C-5.5EXTWE	150-5R-1C-5.5XW	151D978G12	300E-2C-5.5
10E-1CL-8.25	10E-1CL-8.25	150-5R-1C-5.5WE	150-5R-1C-5.5W	151D978G13	400E-2C-5.5
10E-4PT-6	10E-4PT-6	150-5R-1C-8.25	150-5R-1C-8.25	15E14	15E-1C-15.5
10E-8PT-5.5	10E-8PT-5.5	150-5R-1C-8.25WE	150-5R-1C-8.25W	15E-1C-15.5	15E-1C-15.5
125E-1C-2.75	125E-1C-2.75	150-5R-1IB-5.5	150-5R-1IB-5.5	15E-1C-2.75	15E-1C-2.75
125E-1C-5.5	125E-1C-5.5	150E-1C-2.75	150E-1C-2.75	15E-1C-25.8	15E-1C-25.8
125E-1C-8.25	125E-1C-8.25	150E-1C-5.5	150E-1C-5.5	15E-1C-38.0	15E-1C-38.0
125E-1CL-5.5	125E-1CL-5.5	150E-1C-8.25	150E-1C-8.25	15E-1C-5.5	15E-1C-5.5
125E-2C-15.5	125E-2C-15.5	150E-1CL-5.5	150E-1CL-5.5	15E-1C-8.25	15E-1C-8.25
125E-2C-2.75	125E-2C-2.75	150E-2C-15.5	150E-2C-15.5	15E-1CL-15.5	15E-1CL-15.5
125E-2C-5.5	125E-2C-5.5	150E-2C-2.75	150E-2C-2.75	15E-1CL-5.5	15E-1CL-5.5
125E-2C-5.5WE	125E-1C-5.5	150E-2C-5.5	150E-2C-5.5	15E-1CL-8.25	15E-1CL-8.25
125E-2C-8.25	125E-2C-8.25	150E-2C-5.5WE	150E-2C-5.5W	15GS015	15E-1C-15.5
125E-2CL-15.5	125E-2CL-15.5	150E-2C-8.25	150E-2C-8.25	15GS020	20E-1C-15.5
125E-2CL-8.25	125E-2CL-8.25	150E-2CL-15.5	150E-2CL-15.5	15GS025	25E-1C-15.5

# Cross Reference

Competition	Littelfuse	Competition	Littelfuse	Competition	Littelfuse
15GS030	30E-1C-15.5	175E-1CL-5.5	175E-1CL-5.5	200-9R-1C-2.75WE	200-9R-1C-2.75W
15GS040	40E-1C-15.5	175E-2C-15.5	175E-2C-15.5	200-9R-1C-5.5	200-9R-1C-5.5
15GS050	50E-1C-15.5	175E-2C-2.75	175E-2C-2.75	200-9R-1C-5.5EXT	200-9R-1C-5.5X
15GS065	65E-1C-15.5	175E-2C-5.5	175E-2C-5.5	200-9R-1C-5.5EXTWE	200-9R-1C-5.5XW
15GS080	80E-1C-15.5	175E-2C-8.25	175E-2C-8.25	200-9R-1C-5.5WE	200-9R-1C-5.5W
15GSE-100E	15GSE-100E	175E-2CL-15.5	175E-2CL-15.5	200-9R-1C-8.25	200-9R-1C-8.25
15GSE2-125E	15GSE2-125E	175E-2CL-8.25	175E-2CL-8.25	200-9R-1C-8.25WE	200-9R-1C-8.25W
15GSE2-150E	15GSE2-150E	175E-3CL-15.5	175E-3CL-15.5	200-9R-1IB-2.75	200-9R-1IB-2.75
15GSE2-175E	15GSE2-175E	177L108G14	70-2R-1C-2.75	200-9R-1IB-5.5	200-9R-1IB-5.5
15GSE2-200E	15GSE2-200E	177L108G16	100-3R-1C-2.75	200E-1C-2.75	200E-1C-2.75
15GSE-65E	15GSE-65E	177L108G17	130-4R-1C-2.75	200E-1C-5.5	200E-1C-5.5
15GSE-80E	15GSE-80E	177L108G19	170-6R-1C-2.75	200E-1CL-5.5	200E-1CL-5.5
15HLE-100E	100E-1C-15.5	177L108G21	200-9R-1C-2.75	200E-2C-15.5	200E-2C-15.5
15HLE-150E	150E-2C-15.5	177L108G23	230-12R-1C-2.75	200E-2C-2.75	200E-2C-2.75
15HLE-175E	175E-2C-15.5	177L108G25	390-18R-2C-2.75	200E-2C-5.5	200E-2C-5.5
15HLE-20E	20E-1C-15.5	177L108G27	450-24R-2C-2.75	200E-2C-5.5-WE	200E-1C-5.5
15HLE-25E	25E-1C-15.5	177L109G14	70-2R-1C-5.5	200E-2C-8.25	200E-2C-8.25
15HLE-30E	30E-1C-15.5	177L109G16	100-3R-1C-5.5	200E-2CL-15.5	200E-2CL-15.5
15HLE-40E	40E-1C-15.5	177L109G17	130-4R-1C-5.5	200E-2CL-8.25	200E-2CL-8.25
15HLE-50E	50E-1C-15.5	177L109G19	170-6R-1C-5.5	200E-3C-15.5	200E-3C-15.5
15HLE-65E	65E-1C-15.5	177L109G21	200-9R-1C-5.5	200E-3CL-15.5	200E-3CL-15.5
15HLE-80E	80E-1C-15.5	177L109G23	230-12R-1C-5.5	200E5	200E-2C-5.5
15NLE-100E	15NLE-100E	177L109G25	390-18R-2C-5.5	20E14	20E-1C-15.5
15NLE-10E	15NLE-10E	177L109G27	450-24R-2C-5.5	20E-1C-15.5	20E-1C-15.5
15NLE-15E	15NLE-15E	177L148G14	70-2R-1C-5.5	20E-1C-2.75	20E-1C-2.75
15NLE-20E	15NLE-20E	177L148G16	100-3R-1C-5.5	20E-1C-25.8	20E-1C-25.8
15NLE2-100E	15NLE2-100E	177L148G17	130-4R-1C-5.5	20E-1C-38.0	20E-1C-38.0
15NLE2-125E	15NLE2-125E	177L148G19	170-6R-1C-5.5	20E-1C-5.5	20E-1C-5.5
15NLE2-150E	15NLE2-150E	177L148G21	200-9R-1C-5.5	20E-1C-8.25	20E-1C-8.25
15NLE2-175E	15NLE2-175E	177L148G23	230-12R-1C-5.5	20E-1CL-15.5	20E-1CL-15.5
15NLE2-200E	15NLE2-200E	177L148G25	390-18R-2C-5.5	20E-1CL-5.5	20E-1CL-5.5
15NLE-25E	15NLE-25E	177L148G27	450-24R-2C-5.5	20E-1CL-8.25	20E-1CL-8.25
15NLE2-80E	15NLE2-80E	178L611G18	400E-2C-5.5	211-313-941	30E-1C-5.5
15NLE-30E	15NLE-30E	178L611G20	400E-2C-5.5	211-313-942	40E-1C-5.5
15NLE3-150E	15NLE3-150E	18R2	390-18R-2C-2.75	211-313-943	50E-1C-5.5
15NLE3-175E	15NLE3-175E	18R5	390-18R-2C-5.5	211-313-944	65E-1C-5.5
15NLE3-200E	15NLE3-200E	1E-11PT-15.5	1E-11PT-15.5	211-313-945	80E-1C-5.5
15NLE3-250E	15NLE3-250E	1E-16PT-25.5	1E-16PT-25.5	211-313-946	100E-1C-5.5
15NLE3-300E	15NLE3-300E	1E-4PT-2.4	1E-4PT-2.4	211-313-947	125E-2C-5.5
15NLE-40E	15NLE-40E	1E-5PT-4.8	1E-5PT-4.8	211-313-948	150E-2C-5.5
15NLE-50E	15NLE-50E	1E-6PT-2.75	1E-6PT-2.75	211-313-968	15E-1C-15.5
15NLE-65E	15NLE-65E	1E-6PT-5.5	1E-6PT-5.5	211-313-969	20E-1C-15.5
15NLE-80E	15NLE-80E	1E-8PT-2.75	1E-8PT-2.75	211-313-970	25E-1C-15.5
170-6M-1C-2.75	170-6R-1C-2.75	1E-8PT-5.5	1E-8PT-5.5	211-313-971	30E-1C-15.5
170-6M-1C-5.5	170-6R-1C-5.5	1E-8PT-8.25	1E-8PT-8.25	211-313-972	40E-1C-15.5
170-6R-1B-2.75	170-6R-1B-2.75	2.75VFRHA2R	70-2R-1C-2.75	211-313-973	50E-1C-15.5
170-6R-1B-5.5	170-6R-1B-5.5	2.75VFRHA3R	100-3R-1C-2.75	211-313-974	65E-2C-15.5
170-6R-1BI-5.5	170-6R-1BI-5.5	2.75VFRHA4R	130-4R-1C-2.75	211-313-975	80E-2C-15.5
170-6R-1BI-8.25	170-6R-1BI-8.25	2.75VFRHA6R	170-6R-1C-2.75	211-313-976	100E-2C-15.5
170-6R-1C-2.75	170-6R-1C-2.75	2.75VKRHA12R	230-12R-1C-2.75	218A4291P02RA	70-2R-1C-2.75
170-6R-1C-2.75WE	170-6R-1C-2.75W	2.75VKRHA9R	200-9R-1C-2.75	218A4291P02RB	70-2R-1C-5.5
170-6R-1C-5.5	170-6R-1C-5.5	2.75VKRHK18R	390-18R-2C-2.75	218A4291P03RA	100-3R-1C-2.75
170-6R-1C-5.5EXT	170-6R-1C-5.5X	2.75VKRHK24R	450-24R-2C-2.75	218A4291P03RB	100-3R-1C-5.5
170-6R-1C-5.5EXTWE	170-6R-1C-5.5XW	200-9M-1C-2.75	200-9R-1C-2.75	218A4291P04RA	130-4R-1C-2.75
170-6R-1C-5.5WE	170-6R-1C-5.5W	200-9M-1C-5.5	200-9R-1C-5.5	218A4291P04RB	130-4R-1C-5.5
170-6R-1C-8.25	170-6R-1C-8.25	200-9R-1B-2.75	200-9R-1B-2.75	218A4291P06RA	170-6R-1C-2.75
170-6R-1C-8.25WE	170-6R-1C-8.25W	200-9R-1B-5.5	200-9R-1B-5.5	218A4291P06RB	170-6R-1C-5.5
170-6R-1IB-2.75	170-6R-1IB-2.75	200-9R-1BI-5.5	200-9R-1BI-5.5	218A4291P09RA	200-9R-1C-2.75
170-6R-1IB-5.5	170-6R-1IB-5.5	200-9R-1BI-8.25	200-9R-1BI-8.25	218A4291P09RB	200-9R-1C-5.5
175E-1C-5.5	175E-1C-5.5	200-9R-1C-2.75	200-9R-1C-2.75	218A4291P12R2A	230-12R-1C-2.75

# Cross Reference



Competition	Littelfuse	Competition	Littelfuse	Competition	Littelfuse
218A4291P12RA	230-12R-1C-2.75	225E-3CL-8.25	225E-3CL-8.25	2ACLS-9R	200-9R-1C-2.75W
218A4291P12RB	230-12R-1C-5.5	230-12M-1C-2.75	230-12R-1C-2.75	2CLS200	200-9R-1C-2.75
218A4291P18R24	390-18R-2C-2.75	230-12M-1C-5.5	230-12R-1C-5.5	2CLS230	230-12R-1C-2.75
218A4291P18RA	390-18R-2C-2.75	230-12R-1B-2.75	230-12R-1B-2.75	2CLS24R	450-24R-2C-2.75
218A4291P18RB	390-18R-2C-5.5	230-12R-1B-5.5	230-12R-1B-5.5	2CLS2R	70-2R-1C-2.75
218A4291P24R24	450-24R-2C-2.75	230-12R-1BI-5.5	230-12R-1BI-5.5	2CLS390	390-18R-2C-2.75
218A4291P24RA	450-24R-2C-2.75	230-12R-1BI-8.25	230-12R-1BI-8.25	2CLS3R	100-3R-1C-2.75
218A4291P24RB	450-24R-2C-5.5	230-12R-1C-2.75	230-12R-1C-2.75	2CLS4R	130-4R-1C-2.75
218A4291P2R24	70-2R-1C-2.75	230-12R-1C-2.75WE	230-12R-1C-2.75W	2CLS5R	150-5R-1C-2.75
218A4291P3R24	100-3R-1C-2.75	230-12R-1C-5.5	230-12R-1C-5.5	2CLS6R	170-6R-1C-2.75
218A4291P4R24	130-4R-1C-2.75	230-12R-1C-5.5EXT	230-12R-1C-5.5X	2E-11PT-15.5	2E-11PT-15.5
218A4291P6R24	170-6R-1C-2.75	230-12R-1C-5.5EXTWE	230-12R-1C-5.5XW	2E-4PT-2.4	2E-4PT-2.4
218A4291P9R24	200-9R-1C-2.75	230-12R-1C-5.5WE	230-12R-1C-5.5W	2E-5PT-4.8	2E-5PT-4.8
218A4293P12RA	230-12R-1B-2.75	230-12R-1C-8.25	230-12R-1C-8.25	2E-6PT-2.75	2E-6PT-2.75
218A4293P12RB	230-12R-1B-5.5	230-12R-1C-8.25WE	230-12R-1C-8.25W	2E-6PT-5.5	2E-6PT-5.5
218A4293P18RA	390-18R-2B-2.75	230-12R-1IB-2.75	230-12R-1IB-2.75	2E-8PT-2.75	2E-8PT-2.75
218A4293P18RB	390-18R-2B-5.5	230-12R-1IB-5.5	230-12R-1IB-5.5	2E-8PT-5.5	2E-8PT-5.5
218A4293P24RA	450-24R-2B-2.75	24-FM-12R-4	230-12R-1C-2.75	2E-8PT-8.25	2E-8PT-8.25
218A4293P24RB	450-24R-2B-5.5	24-FM-12X-4	230-12R-1C-2.75	2R2	70-2R-1C-2.75
218A4293P2RB	70-2R-1B-5.5	24-FM-18R-5	390-18R-2C-2.75	2R5	70-2R-1C-5.5
218A4293P3RA	100-3R-1B-2.75	24-FM-18X-5	390-18R-2C-2.75	300E-2C-2.75	300E-2C-2.75
218A4293P3RB	100-3R-1B-5.5	24-FM-24R-5	450-24R-2C-2.75	300E-2C-5.5	300E-2C-5.5
218A4293P4RA	130-4R-1B-2.75	24-FM-24X-5	450-24R-2C-2.75	300E-2CL-5.5	300E-2CL-5.5
218A4293P4RB	130-4R-1B-5.5	24-FM-2R-4	70-2R-1C-2.75	300E-3C-15.5	300E-3C-15.5
218A4293P550RB	550-30R-2B-5.5	24-FM-2X-4	70-2R-1C-2.75	300E-3C-8.25	300E-3C-8.25
218A4293P630RB	650-36R-2B-5.5	24-FM-3R-4	100-3R-1C-2.75	300E-3CL-15.5	300E-3CL-15.5
218A4293P6RA	170-6R-1B-2.75	24-FM-3X-4	100-3R-1C-2.75	300E-3CL-8.25	300E-3CL-8.25
218A4293P6RB	170-6R-1B-5.5	24-FM-4R-4	130-4R-1C-2.75	304C463G03	390-18R-2C-5.5X
218A4293P9RA	200-9R-1B-2.75	24-FM-4X-4	130-4R-1C-2.75	304C463G04	450-24R-2C-5.5X
218A4293P9RB	200-9R-1B-5.5	24-FM-6R-4	170-6R-1C-2.75	30E14	30E-1C-15.5
225-007-937	10E-1CL-5.5	24-FM-6X-4	170-6R-1C-2.75	30E-1C-15.5	30E-1C-15.5
225-007-938	15E-1CL-5.5	24-FM-9R-4	200-9R-1C-2.75	30E-1C-2.75	30E-1C-2.75
225-007-939	20E-1CL-5.5	24-FM-9X-4	200-9R-1C-2.75	30E-1C-25.8	30E-1C-25.8
225-007-940	25E-1CL-5.5	24R2	450-24R-2C-2.75	30E-1C-38.0	30E-1C-38.0
225-007-941	30E-1CL-5.5	24R5	450-24R-2C-5.5	30E-1C-5.5	30E-1C-5.5
225-007-942	40E-1CL-5.5	250E-2C-2.75	250E-2C-2.75	30E-1C-8.25	30E-1C-8.25
225-007-943	50E-1CL-5.5	250E-2C-5.5	250E-2C-5.5	30E-1CL-15.5	30E-1CL-15.5
225-007-944	65E-1CL-5.5	250E-2C-8.25	250E-2C-8.25	30E-1CL-5.5	30E-1CL-5.5
225-007-945	80E-1CL-5.5	250E-2CL-5.5	250E-2CL-5.5	30E-1CL-8.25	30E-1CL-8.25
225-007-946	100E-1CL-5.5	250E-3C-15.5	250E-3C-15.5	30E5	30E-1C-5.5
225-007-947	125E-1CL-5.5	250E-3CL-15.5	250E-3CL-15.5	310C095G02	50E-1C-2.75
225-007-948	150E-1CL-5.5	250E-3CL-8.25	250E-3CL-8.25	310C095G03	65E-1C-2.75
225-007-967	10E-1CL-15.5	25E14	25E-1C-15.5	310C095G04	80E-1C-2.75
225-007-968	15E-1CL-15.5	25E-1C-15.5	25E-1C-15.5	310C095G05	100E-1C-2.75
225-007-969	20E-1CL-15.5	25E-1C-2.75	25E-1C-2.75	310C095G06	125E-2C-2.75
225-007-970	25E-1CL-15.5	25E-1C-25.8	25E-1C-25.8	310C095G07	150E-2C-2.75
225-007-971	30E-1CL-15.5	25E-1C-38.0	25E-1C-38.0	310C095G08	200E-2C-2.75
225-007-972	40E-1CL-15.5	25E-1C-5.5	25E-1C-5.5	310C095G12	5NLE-50E
225-007-973	50E-1CL-15.5	25E-1C-8.25	25E-1C-8.25	310C095G13	5NLE-65E
225-007-974	65E-1CL-15.5	25E-1CL-15.5	25E-1CL-15.5	310C095G14	5NLE-80E
225-007-975	80E-1CL-15.5	25E-1CL-5.5	25E-1CL-5.5	310C095G15	5NLE-100E
225-007-976	100E-1CL-15.5	25E-1CL-8.25	25E-1CL-8.25	310C095G16	5NLE-125E
225-007-977	125E-2CL-15.5	2ACLS-12R	230-12R-1C-2.75W	310C095G17	5NLE-150E
225-007-978	150E-3CL-15.5	2ACLS-18R	390-18R-2C-2.75W	310C095G18	5NLE-200E
225-007-979	200E-3CL-15.5	2ACLS-24R	450-24R-2C-2.75W	310C095G20	5NLE-30E
225-007-980	250E-3CL-15.5	2ACLS-2R	70-2R-1C-2.75W	310C658G02	70-2R-1C-5.5
225-007-981	300E-3CL-15.5	2ACLS-3R	100-3R-1C-2.75W	310C658G03	100-3R-1C-5.5
225E-2C-2.75	225E-2C-2.75	2ACLS-4R	130-4R-1C-2.75W	310C658G04	130-4R-1C-5.5
225E-2CL-5.5	225E-2CL-5.5	2ACLS-5R	150-5R-1C-2.75W	310C658G05	150-5R-1C-5.5
225E-3CL-15.5	225E-3CL-15.5	2ACLS-6R	170-6R-1C-2.75W	310C658G06	170-6R-1C-5.5

# Cross Reference



Competition	Littelfuse	Competition	Littelfuse	Competition	Littelfuse
310C658G09	200-9R-1C-5.5	3E-1C-38.0	3E-1C-38.0	449D361G05	170-6R-1C-5.5W
310C658G12	230-12R-1C-5.5	3E-4PT-6	3E-4PT-6	449D361G06	200-9R-1C-5.5W
310C905G09	5NLE2-250E	3E-6PT-2.75	3E-6PT-2.75	449D361G07	230-12R-1C-5.5W
310C905G11	5NLE2-300E	3E-6PT-5.5	3E-6PT-5.5	449D597G02	70-2R-1C-5.5W
310C905G12	5NLE2-350E	3E-8PT-2.75	3E-8PT-2.75	449D597G03	100-3R-1C-5.5W
310C905G14	5NLE2-400E	3E-8PT-5.5	3E-8PT-5.5	449D597G04	130-4R-1C-5.5W
328L497G11	1/2E-8PT-5.5	3E-8PT-8.25	3E-8PT-8.25	449D597G05	170-6R-1C-5.5W
328L497G12	1E-8PT-5.5	3R2	100-3R-1C-2.75	449D597G06	170-6R-1C-5.5W
328L497G15	1/2E-8PT-8.25	3R5	100-3R-1C-5.5	449D635G01	8NLE-30E
328L497G19	1/2E-11PT-15.5	400E-2C-2.75	400E-2C-2.75	449D635G02	8NLE-40E
328L497G20	1E-11PT-15.5	400E-2C-5.5	400E-2C-5.5	449D635G03	8NLE-50E
350E-2C-2.75	350E-2C-2.75	400E-2CL-5.5	400E-2CL-5.5	449D635G04	8NLE-65E
350E-2C-5-5	350E-2C-5-5	400E-3C-8.25	400E-3C-8.25	449D635G05	8NLE-80E
350E-2CL-5.5	350E-2CL-5.5	40E14	40E-1C-15.5	449D635G06	8NLE-100E
350E-3C-8.25	350E-3C-8.25	40E-1C-15.5	40E-1C-15.5	449D636G02	8NLE2-200E
350E-3CL-8.25	350E-3CL-8.25	40E-1C-2.75	40E-1C-2.75	449D636G04	8NLE2-100E
3582030M01M	30E-1C-5.5	40E-1C-25.8	40E-1C-25.8	449D759G01	70-2R-1C-5.5
3582040M01M	40E-1C-5.5	40E-1C-38.0	40E-1C-38.0	449D759G02	100-3R-1C-5.5
3582050M01M	50E-1C-5.5	40E-1C-5.5	40E-1C-5.5	449D759G03	130-4R-1C-5.5
3582065M01M	65E-1C-5.5	40E-1C-8.25	40E-1C-8.25	449D759G04	150-5R-1C-5.5
3582080M01M	80E-1C-5.5	40E-1CL-15.5	40E-1CL-15.5	449D759G05	170-6R-1C-5.5
3582100M01M	100E-1C-5.5	40E-1CL-5.5	40E-1CL-5.5	449D759G06	200-9R-1C-5.5
3582125M01M	125E-1C-5.5	40E-1CL-8.25	40E-1CL-8.25	449D759G07	230-12R-1C-5.5
3582150M01M	150E-1C-5.5	40E5	40E-1C-5.5	449D760G01	450-24R-2C-5.5
3583020M01M	8NLE-20E	427505	25E-1C-5.5	449D760G02	390-18R-2C-5.5
3583025M01M	8NLE-25E	427506	30E-1C-5.5	449D797G02	30E-1C-2.75
3583030M01M	8NLE-30E	427507	40E-1C-5.5	449D797G03	50E-1C-2.75
3583040M01M	8NLE-40E	427508	50E-1C-5.5	449D797G04	65E-1C-2.75
3583050M01M	8NLE-50E	427509	65E-1C-5.5	449D797G05	80E-1C-2.75
3583065M01M	8NLE-65E	427510	80E-1C-5.5	449D797G06	100E-1C-2.75
3583080M01M	8NLE-80E	427511	100E-1C-5.5	449D797G07	125E-2C-2.75
3583100M01M	8NLE-100E	427512	125E-2C-5.5	449D797G08	150E-2C-2.75
35840100M01M	100E-1C-15.5	427515	150E-2C-5.5	449D797G09	200E-2C-2.75
3584020M01M	20E-1C-15.5	427516	200E-2C-5.5	449D797G11	10E-1C-2.75
3584025M01M	25E-1C-15.5	427517	250E-2C-5.5	449D797G13	250E-2C-2.75
3584030M01M	30E-1C-15.5	427518	300E-2C-5.5	449D797G14	300E-2C-2.75
3584040M01M	40E-1C-15.5	427525	25E-1C-8.25	449D797G17	400E-2C-2.75
3584050M01M	50E-1C-15.5	427526	30E-1C-8.25	450-24M-2C-2.75	450-24R-2C-2.75
3584065M01M	65E-1C-15.5	427527	40E-1C-8.25	450-24M-2C-5.5	450-24R-2C-5.5
3584080M01M	80E-1C-15.5	427528	50E-1C-8.25	450-24R-2B-2.75	450-24R-2B-2.75
366C474G01	70-2R-1C-2.75	427529	65E-1C-8.25	450-24R-2B-5.5	450-24R-2B-5.5
390-18M-2C-2.75	390-18R-2C-2.75	427545	25E-1C-15.5	450-24R-2BI-5.5	450-24R-2BI-5.5
390-18M-2C-5.5	390-18R-2C-5.5	427546	30E-1C-15.5	450-24R-2BI-8.25	450-24R-2BI-8.25
390-18R-2B-2.75	390-18R-2B-2.75	427547	40E-1C-15.5	450-24R-2C-2.75	450-24R-2C-2.75
390-18R-2B-5.5	390-18R-2B-5.5	427548	50E-1C-15.5	450-24R-2C-2.75	450-24R-2C-2.75
390-18R-2BI-5.5	390-18R-2BI-5.5	427549	65E-2C-15.5	450-24R-2C-2.75WE	450-24R-2C-2.75WE
390-18R-2BI-8.25	390-18R-2BI-8.25	427550	80E-2C-15.5	450-24R-2C-5.5	450-24R-2C-5.5
390-18R-2C-2.75	390-18R-2C-2.75	427551	100E-2C-15.5	450-24R-2C-5.5EXT	450-24R-2C-5.5X
390-18R-2C-2.75	390-18R-2C-2.75	427552	125E-2C-15.5	450-24R-2C-5.5EXTWE	450-24R-2C-5.5XW
390-18R-2C-2.75WE	390-18R-2C-2.75W	439D378G03	15NLE-30E	450-24R-2C-5.5WE	450-24R-2C-5.5W
390-18R-2C-5.5	390-18R-2C-5.5	439D378G04	15NLE-40E	450-24R-2C-8.25	450-24R-2C-8.25
390-18R-2C-5.5EXT	390-18R-2C-5.5X	439D378G05	15NLE-50E	450-24R-2C-8.25WE	450-24R-2C-8.25W
390-18R-2C-5.5EXTWE	390-18R-2C-5.5XW	439D378G06	15NLE-65E	450-24R-2IB-2.75	450-24R-2IB-2.75
390-18R-2C-5.5WE	390-18R-2C-5.5W	439D482G04	15NLE2-80E	450-24R-2IB-5.5	450-24R-2IB-5.5
390-18R-2C-8.25	390-18R-2C-8.25	439D482G05	15NLE2-100E	450E-2C-2.75	450E-2C-2.75
390-18R-2C-8.25WE	390-18R-2C-8.25W	439D482G06	15NLE2-125E	450E-2C-5.5	450E-2C-5.5
390-18R-2IB-2.75	390-18R-2IB-2.75	449D361G01	70-2R-1C-5.5W	450E-2CL-5.5	450E-2CL-5.5
390-18R-2IB-5.5	390-18R-2IB-5.5	449D361G02	100-3R-1C-5.5W	450E-3C-8.25	450E-3C-8.25
3E-11PT-15.5	3E-11PT-15.5	449D361G03	130-4R-1C-5.5W	480-26R-2C-5.5	480-26R-2C-5.5
3E-16PT-15.5	3E-16PT-15.5	449D361G04	150-5R-1C-5.5W	48-FM-12R-4	230-12R-1C-5.5

# Cross Reference



Competition	Littelfuse	Competition	Littelfuse	Competition	Littelfuse
48-FM-12R-4G	230-12R-1C-5.5	550-30R-2B-5.5	550-30R-2B-5.5	5980C21G02	25E-1C-8.25
48-FM-12X-4	230-12R-1C-5.5	550-30R-2BI-5.5	550-30R-2BI-5.5	5980C21G03	30E-1C-8.25
48-FM-18R-5	390-18R-2C-5.5	550-30R-2BI-8.25	550-30R-2BI-8.25	5980C21G04	40E-1C-8.25
48-FM-18R-5G	390-18R-2C-5.5	550-30R-2C-5.5	550-30R-2C-5.5	5980C21G05	50E-1C-8.25
48-FM-18X-5	390-18R-2C-5.5	550-30R-2IB-5.5	550-30R-2IB-5.5	5980C21G06	65E-1C-8.25
48-FM-24R-5	450-24R-2C-5.5	550-30R-3C-5.5	550-30R-3C-5.5	5980C21G07	80E-1C-8.25
48-FM-24R-5G	450-24R-2C-5.5	550-30R-3C-8.25	550-30R-3C-8.25	5980C21G08	100E-1C-8.25
48-FM-24X-5	450-24R-2C-5.5	550E-3C-5.5	550E-3C-5.5	5980C21G09	125E-1C-8.25
48-FM-2R-4	70-2R-1C-5.5	550E-3CL-5.5	550E-3CL-5.5	5980C22G02	20E-1C-15.5
48-FM-2R-4G	70-2R-1C-5.5	55A212942P12RA	230-12R-1IB-2.75	5980C22G03	25E-1C-15.5
48-FM-2X-4	70-2R-1C-5.5	55A212942P12RB	230-12R-1IB-5.5	5980C22G04	30E-1C-15.5
48-FM-3R-4	100-3R-1C-5.5	55A212942P18RA	390-18R-2IB-2.75	5980C22G05	40E-1C-15.5
48-FM-3R-4G	100-3R-1C-5.5	55A212942P18RB	390-18R-2IB-5.5	5980C22G06	50E-1C-15.5
48-FM-3X-4	100-3R-1C-5.5	55A212942P24RA	450-24R-2IB-2.75	5980C22G07	65E-1C-15.5
48-FM-4R-4	130-4R-1C-5.5	55A212942P24RB	450-24R-2IB-5.5	5980C22G08	80E-1C-15.5
48-FM-4R-4G	130-4R-1C-5.5	55A212942P2RB	70-2R-1IB-5.5	5980C22G09	100E-1C-15.5
48-FM-4X-4	130-4R-1C-5.5	55A212942P3RA	100-3R-1IB-2.75	5980C23G01	15NLE-30E
48-FM-6R-4	170-6R-1C-5.5	55A212942P3RB	100-3R-1IB-5.5	5980C23G02	15NLE-40E
48-FM-6R-4G	170-6R-1C-5.5	55A212942P4RA	130-4R-1IB-2.75	5980C23G03	15NLE-50E
48-FM-6X-4	170-6R-1C-5.5	55A212942P4RB	130-4R-1IB-5.5	5980C23G04	15NLE-65E
48-FM-9R-4	200-9R-1C-5.5	55A212942P50RB	550-30R-2IB-5.5	5980C23G05	15NLE-80E
48-FM-9R-4G	200-9R-1C-5.5	55A212942P630RB	650-36R-2IB-5.5	5980C23G06	15NLE-100E
48-FM-9X-4	200-9R-1C-5.5	55A212942P6RA	170-6R-1IB-2.75	5980C24G01	8NLE-30E
4R2	130-4R-1C-2.75	55A212942P6RB	170-6R-1IB-5.5	5980C24G02	8NLE-40E
4R5	130-4R-1C-5.5	55A212942P9RA	200-9R-1IB-2.75	5980C24G03	8NLE-50E
5.5AMWNA2E	2E-5PT-4.8	55A212942P9RB	200-9R-1IB-5.5	5980C24G04	8NLE-65E
5.5ANWNA-.5E	1/2E-4PT-5.5	55A213937P425B	5SB4-24R	5980C24G05	8NLE-80E
5.5ANWNA-2E	2E-4PT-5.5	55A213937P630B	5SB4-36R	5980C24G06	8NLE-100E
5.5BFNHA100	100E-1C-5.5	55A213937P800B	5SB4-48R	5980C25G01	30E-1C-5.5
5.5BFNHA125	125E-1C-5.5	591C142G02	70-2R-1C-2.75W	5980C25G02	40E-1C-5.5
5.5BFNHA150	150E-1C-5.5	591C142G03	100-3R-1C-2.75W	5980C25G03	50E-1C-5.5
5.5BFNHA80	80E-1C-5.5	591C142G04	130-4R-1C-2.75W	5980C25G11	250E-2C-5.5
5.5BFNKH200	200E-1C-5.5	591C142G05	150-5R-1C-2.75W	5980C26G01	5NLE-30E
5.5BKNHK400	400E-2C-5.5	591C142G06	170-6R-1C-2.75W	5980C26G03	5NLE-50E
5.5FFHNA65E	65E-1C-5.5	591C142G07	200-9R-1C-2.75W	5980C26G04	5NLE-65E
5.5FFNA65E	65E-1C-5.5	591C142G08	230-12R-1C-2.75W	5980C26G05	5NLE-80E
5.5FFNHK125E	125E-1C-5.5	591C143G01	390-18R-2C-2.75W	5980C26G06	5NLE-100E
5.5FFNHK150E	150E-1C-5.5	591C143G02	450-24R-2C-2.75W	5980C26G08	5NLE-150E
5.5VFNHA2R	70-2R-1C-5.5	591C155G02	70-2R-1C-2.75SW	5980C26G09	5NLE-175E
5.5VFNHA3R	100-3R-1C-5.5	591C155G03	100-3R-1C-2.75SW	5980C26G10	5NLE-200E
5.5VFNHA4R	130-4R-1C-5.5	591C155G04	130-4R-1C-2.75SW	5980C31G01	200E-2C-8.25
5.5VFNHA6R	170-6R-1C-5.5	591C155G05	150-5R-1C-2.75SW	5980C31G02	250E-2C-8.25
5.5VKNHA12R	230-12R-1C-5.5	591C155G06	170-6R-1C-2.75SW	5980C31G03	300E-3C-8.25
5.5VKNHA9R	200-9R-1C-5.5	591C155G07	200-9R-1C-2.75SW	5980C31G04	350E-3C-8.25
5.5VKNHK18R	390-18R-2C-5.5	591C155G08	230-12R-1C-2.75SW	5980C32G01	150E-2C-15.5
5.5VKNHK24R	450-24R-2C-5.5	591C157G01	390-18R-2C-2.75SW	5980C32G02	175E-2C-15.5
500E-3C-5.5	500E-3C-5.5	591C157G02	450-24R-2C-2.75SW	5980C33G01	15NLE2-175E
500E-3CL-5.5	500E-3CL-5.5	591C376G01	15NLE3-175E	5980C33G02	15NLE2-200E
50E14	50E-1C-15.5	591C376G02	15NLE3-150E	5980C35G01	300E-2C-5.5
50E-1C-15.5	50E-1C-15.5	591C812G02	70-2R-1C-2.75	5980C35G04	450E-2C-5.5
50E-1C-2.75	50E-1C-2.75	591C812G03	100-3R-1C-2.75	5980C36G01	5NLE2-300E
50E-1C-25.8	50E-1C-25.8	591C812G04	130-4R-1C-2.75	5980C36G02	5NLE2-350E
50E-1C-38.0	50E-1C-38.0	591C812G05	150-5R-1C-2.75	5980C36G03	5NLE2-400E
50E-1C-5.5	50E-1C-5.5	591C812G06	170-6R-1C-2.75	5980C36G04	5NLE2-450E
50E-1C-8.25	50E-1C-8.25	591C812G07	200-9R-1C-2.75	5ACLS-12R	230-12R-1C-5.5W
50E-1CL-15.5	50E-1CL-15.5	591C812G08	230-12R-1C-2.75	5ACLS-18R	390-18R-2C-5.5W
50E-1CL-5.5	50E-1CL-5.5	591C813G01	390-18R-2C-2.75	5ACLS-24R	450-24R-2C-5.5W
50E-1CL-8.25	50E-1CL-8.25	591C813G02	450-24R-2C-2.75	5ACLS-26R	500-26R-2C-5.5W
50E-2C-38.0	50E-2C-38.0	5980C20G03	2E-5PT-4.8	5ACLS-2R	70-2R-1C-5.5W
50E5	50E-1C-5.5	5980C21G01	20E-1C-8.25	5ACLS-3R	100-3R-1C-5.5W

# Cross Reference



Competition	Littelfuse	Competition	Littelfuse	Competition	Littelfuse
5ACLS-4R	130-4R-1C-5.5W	5NLE-20E	5NLE-20E	6193418G21	200-9R-1C-2.75
5ACLS-5R	150-5R-1C-5.5W	5NLE2-225E	5NLE2-225E	6193418G23	230-12R-1C-2.75
5ACLS-6R	170-6R-1C-5.5W	5NLE2-250E	5NLE2-250E	6193419G14	70-2R-1C-5.5
5ACLS-9R	200-9R-1C-5.5W	5NLE2-300E	5NLE2-300E	6193419G16	100-3R-1C-5.5
5CLS12R	230-12R-1C-5.5	5NLE2-350E	5NLE2-350E	6193419G17	130-4R-1C-5.5
5CLS18R	390-18R-2C-5.5	5NLE2-400E	5NLE2-400E	6193419G19	170-6R-1C-5.5
5CLS24R	450-24R-2C-5.5	5NLE2-450E	5NLE2-450E	6193419G21	200-9R-1C-5.5
5CLS2R	70-2R-1C-5.5	5NLE-25E	5NLE-25E	6193419G23	230-12R-1C-5.5
5CLS3R	100-3R-1C-5.5	5NLE-30E	5NLE-30E	6193419G25	390-18R-2C-5.5
5CLS4R	130-4R-1C-5.5	5NLE3-500E	5NLE3-500E	6193419G27	450-24R-2C-5.5
5CLS5R	150-5R-1C-5.5	5NLE3-550E	5NLE3-550E	6193425G14	70-2R-1C-5.5
5CLS6R	170-6R-1C-5.5	5NLE3-600E	5NLE3-600E	6193425G16	100-3R-1C-5.5
5CLS9R	200-9R-1C-5.5	5NLE-40E	5NLE-40E	6193425G17	130-4R-1C-5.5
5E-16PT-15.5	5E-16PT-15.5	5NLE-50E	5NLE-50E	6193425G19	170-6R-1C-5.5
5E-4PT-.6	5E-4PT-.6	5NLE-65E	5NLE-65E	6193425G21	200-9R-1C-5.5
5E-6PT-5.5	5E-6PT-5.5	5NLE-80E	5NLE-80E	6193425G23	230-12R-1C-5.5
5E-8PT-5.5	5E-8PT-5.5	5SB4-24R	5SB4-24R	6193425G25	390-18R-2C-5.5
5GS010	10E-1C-5.5	5SB4-30R	5SB4-30R	6193484G11	30E-1C-2.75
5GS015	15E-1C-5.5	5SB4-36R	5SB4-36R	6193484G14	65E-1C-2.75
5GS020	20E-1C-5.5	5SB4-48R	5SB4-48R	6193486G16	100E-1C-5.5
5GS025	25E-1C-5.5	600-32R-2C-5.5	600-32R-2C-5.5	6193487G14	65E-1C-5.5
5GS030	30E-1C-5.5	600-32R-3C-5.5	600-32R-3C-5.5	6193487G15	80E-1C-5.5
5GS040	40E-1C-5.5	600-32R-3C-8.25	600-32R-3C-8.25	6193487G16	100E-1C-5.5
5GS050	50E-1C-5.5	600E-3C-5.5	600E-3C-5.5	6193487G17	125E-1C-5.5
5GS065	65E-1C-5.5	600E-3CL-5.5	600E-3CL-5.5	6193487G18	150E-1C-5.5
5GS080	80E-1C-5.5	60X214	1/2E-11PT-15.5	6193487G19	200E-1C-5.5
5GS100	100E-1C-5.5	6105734G05	1/2E-8PT-5.5	6193489G14	70-2R-1C-2.75
5GS250	250E-1C-5.5	6105734G06	1E-8PT-5.5	6193489G16	100-3R-1C-2.75
5GS300	300E-1C-5.5	6105734G09	1/2E-8PT-8.25	6193489G17	130-4R-1C-2.75
5GS350	350E-1C-5.5	6105734G13	1/2E-11PT-15.5	6193489G19	170-6R-1C-2.75
5GS400	400E-1C-5.5	6105734G14	1E-11PT-15.5	6193489G21	200-9R-1C-2.75
5GS450	450E-1C-5.5	6114008G05	1/2E-8PT-5.5	6193489G23	230-12R-1C-2.75
5HLE-100E	100E-1C-5.5	6114008G06	1E-8PT-5.5	6210409G05	1/2E-8PT-5.5
5HLE-125E	125E-1C-5.5	6114008G09	1/2E-8PT-8.25	6210409G06	1E-8PT-5.5
5HLE-150E	150E-1C-5.5	6114008G13	1/2E-11PT-15.5	6210409G09	1/2E-8PT-8.25
5HLE-200E	200E-1C-5.5	6114008G14	1E-11PT-15.5	6210409G13	1/2E-11PT-15.5
5HLE-250E	250E-2C-5.5	6114304G5	1E-4PT-2.4	6210409G14	1E-11PT-15.5
5HLE-300E	300E-2C-5.5	6114304G8	2E-4PT-2.4	6210410G05	1/2E-8PT-5.5
5HLE-30E	30E-1C5.5	6124450G11	30E-1C-2.75	6210410G06	1E-8PT-5.5
5HLE-400E	400E-2C-5.5	6124450G14	65E-1C-2.75	6210410G09	1/2E-8PT-8.25
5HLE-40E	40E-1C-5.5	6124450G7	10E-1C-2.75	6210410G13	1/2E-11PT-15.5
5HLE-50E	50E-1C-5.5	6124462G37	65E-1C-5.5	6210410G14	1E-11PT-15.5
5HLE-65E	65E-1C-5.5	6124462G39	80E-1C-5.5	6210412G7	10E-1C-2.75
5HLE-80E	80E-1C-5.5	6124462G40	100E-1C-5.5	6227385G11	30E-1C-2.75
5LCLS-12R	230-12R-1C-5.5X	6124462G41	125E-1C-5.5	6227385G13	15E-1C-2.75
5LCLS-18R	390-18R-2C-5.5X	6187090G08	1E-11PT-15.5	6227385G14	65E-1C-2.75
5LCLS-24R	450-24R-2C-5.5X	6187090G10	1/2E-11PT-15.5	6227385G7	10E-1C-2.75
5LCLS-2R	70-2R-1C-5.5X	6193403G07	10E-1C-2.75	6293011G11	1/2E-8PT-5.5
5LCLS-3R	100-3R-1C-5.5X	6193403G11	30E-1C-2.75	6293011G12	1E-8PT-5.5
5LCLS-4R	130-4R-1C-5.5X	6193403G13	50E-1C-2.75	6293011G15	1/2E-8PT-8.25
5LCLS-5R	150-5R-1C-5.5X	6193403G14	65E-1C-2.75	6293011G19	1/2E-11PT-15.5
5LCLS-6R	170-6R-1C-5.5X	6193403G15	80E-1C-2.75	6293011G20	1E-11PT-15.5
5LCLS-9R	200-9R-1C-5.5X	6193403G16	100E-1C-2.75	6353230G01	1E-11PT-15.5
5NLE-100E	5NLE-100E	6193403G17	125E-2C-2.75	6379D25H05	70-2R-1C-2.75W
5NLE-10E	5NLE-10E	6193403G18	150E-2C-2.75	6379D25H06	100-3R-1C-2.75W
5NLE-125E	5NLE-125E	6193403G19	200E-2C-2.75	6379D25H07	130-4R-1C-2.75W
5NLE-150E	5NLE-150E	6193418G14	70-2R-1C-2.75	6379D25H08	150-5R-1C-2.75W
5NLE-15E	5NLE-15E	6193418G16	100-3R-1C-2.75	6379D25H09	170-6R-1C-2.75W
5NLE-175E	5NLE-175E	6193418G17	130-4R-1C-2.75	6379D25H12	200-9R-1C-2.75W
5NLE-200E	5NLE-200E	6193418G19	170-6R-1C-2.75	6379D25H15	230-12R-1C-2.75W

# Cross Reference



Competition	Littelfuse	Competition	Littelfuse	Competition	Littelfuse
6379D25H20	390-18R-2C-2.75W	677C452G06	1E-8PT-5.5	718A41G05	30E-1C-8.25
6379D25H24	450-24R-2C-2.75W	677C452G08	1E-11PT-15.5	7CLS-12R	230-12R-1C-8.25
6379D26H05	70-2R-1C-5.5W	677C452G09	1E-16PT-25.5	7CLS-18R	390-18R-2C-8.25
6379D26H06	100-3R-1C-5.5W	677C453G01	5E-8PT-5.5	7CLS-24R	450-24R-2C-8.25
6379D26H07	130-4R-1C-5.5W	677C453G03	5E-16PT-15.5	7CLS-9R	200-9R-1C-8.25
6379D26H08	150-5R-1C-5.5W	677C453G04	10E-8PT-5.5	7E-1C-38.0	7E-1C-38.0
6379D26H09	170-6R-1C-5.5W	677C453G07	3E-8PT-5.5	7E-4PT-6	7E-4PT-6
6379D26H12	200-9R-1C-5.5W	677C453G09	3E-16PT-15.5	8000.0207-L	80E-1C-5.5
6379D26H15	230-12R-1C-5.5W	677C592G03	1E-4PT-2.4	801A026F02	70-2R-1C-5.5
6379D26H20	390-18R-2C-5.5W	677C592G04	2E-4PT-2.4	801A026F03	100-3R-1C-5.5
6379D26H24	450-24R-2C-5.5W	677C592G09	2E-5PT-4.8	801A026F04	130-4R-1C-5.5
6379D26H25	500-26R-2C-5.5W	678C240G01	15E-1C-2.75	801A026F06	170-6R-1C-5.5
6379D26H26	550-30R-2C-5.5W	678C240G02	20E-1C-2.75	801A026F09	200-9R-1C-5.5
6379D26H28	600-32R-2C-5.5W	678C240G03	25E-1C-2.75	801A026F12	230-12R-1C-5.5
6458D80H05	70-2R-1C-8.25W	678C240G04	5NLE-15E	801A026F18	390-18R-2C-5.5
6458D80H06	100-3R-1C-8.25W	678C240G05	5NLE-20E	801A026F24	450-24R-2C-5.5
6458D80H07	130-4R-1C-8.25W	678C240G06	5NLE-25E	801A026F36	650-36R-2C-5.5
6458D80H08	150-5R-1C-8.25W	678C240G07	8NLE-15E	801A424F02	70-2R-1C-2.75
6458D80H09	170-6R-1C-8.25W	678C240G08	8NLE-20E	801A424F03	100-3R-1C-2.75
6458D80H12	200-9R-1C-8.25W	678C240G10	15NLE-15E	801A424F04	130-4R-1C-2.75
6458D80H15	230-12R-1C-8.25W	678C240G11	15NLE-20E	801A424F06	170-6R-1C-2.75
6458D80H20	390-18R-2C-8.25W	678C240G12	15NLE-25E	801A424F09	200-9R-1C-2.75
6458D80H25	450-24R-2C-8.25W	678C281G01	5NLE-10E	801A424F12	230-12R-1C-2.75
650-36R-2B-5.5	650-36R-2B-5.5	678C292G03	5NLE-2400E	801A424F18	390-18R-2C-2.75
650-36R-2BI-5.5	650-36R-2BI-5.5	678C299G03	400E-2C-5.5	801A424F24	450-24R-2C-2.75
650-36R-2BI-8.25	650-36R-2BI-8.25	6R2	70-2R-1C-2.75	80E14	80E-2C-15.5
650-36R-2C-2.75	650-36R-2C-2.75	6R5	170-6R-1C-5.5	80E-1C-15.5	80E-1C-15.5
650-36R-2C-2.75WE	650-36R-2C-2.75W	700-38R-3C-5.5	700-38R-3C-5.5	80E-1C-2.75	80E-1C-2.75
650-36R-2C-5.5	650-36R-2C-5.5	70-2M-1C-2.75	70-2R-1C-2.75	80E-1C-5.5	80E-1C-5.5
650-36R-2C-5.5WE	650-36R-2C-5.5W	70-2M-1C-5.5	70-2R-1C-5.5	80E-1C-8.25	80E-1C-8.25
650-36R-2IB-5.5	650-36R-2IB-5.5	70-2R-1B-5.5	70-2R-1B-5.5	80E-1CL-15.5	80E-1CL-15.5
650-36R-3C-5.5	650-36R-3C-5.5	70-2R-1BI-5.5	70-2R-1BI-5.5	80E-1CL-5.5	80E-1CL-5.5
65E14	65E-2C-15.5	70-2R-1BI-8.25	70-2R-1BI-8.25	80E-1CL-8.25	80E-1CL-8.25
65E-1C-15.5	65E-1C-15.5	70-2R-1C-2.75	70-2R-1C-2.75	80E-2C-15.5	80E-2C-15.5
65E-1C-2.75	65E-1C-2.75	70-2R-1C-2.75WE	70-2R-1C-2.75W	80E-2C-25.8	80E-2C-25.8
65E-1C-5.5	65E-1C-5.5	70-2R-1C-5.5	70-2R-1C-5.5	80E-2C-38.0	80E-2C-38.0
65E-1C-5.5-WE	65E-1C-5.5W	70-2R-1C-5.5EXT	70-2R-1C-5.5X	80E5	80E-1C-5.5
65E-1C-8.25	65E-1C-8.25	70-2R-1C-5.5EXTWE	70-2R-1C-5.5XW	8CLS-2R	70-2R-1C-8.25
65E-1CL-15.5	65E-1CL-15.5	70-2R-1C-5.5WE	70-2R-1C-5.5W	8CLS-3R	100-3R-1C-8.25
65E-1CL-5.5	65E-1CL-5.5	70-2R-1C-8.25	70-2R-1C-8.25	8CLS-4R	130-4R-1C-8.25
65E-1CL-8.25	65E-1CL-8.25	70-2R-1C-8.25WE	70-2R-1C-8.25W	8CLS-5R	150-5R-1C-8.25
65E-2C-15.5	65E-2C-15.5	70-2R-1IB-5.5	70-2R-1IB-5.5	8CLS-6R	170-6R-1C-8.25
65E-2C-25.8	65E-2C-25.8	71-207-082-501	70-2R-1C-2.75	8HLE-100E	8NLE-100E
65E-2C-38.0	65E-2C-38.0	71-207-082-502	100-3R-1C-2.75	8HLE-200E	8NLE-200E
65E5	65E-1C-5.5	71-207-082-503	130-4R-1C-2.75	8HLE-20E	8NLE-20E
676C546G02	70-2R-1C-2.75	71-207-082-504	170-6R-1C-2.75	8HLE-25E	8NLE-25E
676C546G03	100-3R-1C-2.75	71-207-082-505	200-9R-1C-2.75	8HLE-30E	8NLE-30E
676C546G04	130-4R-1C-2.75	71-207-082-506	230-12R-1C-2.75	8HLE-40E	8NLE-40E
676C546G14	5NLE-40E	71-207-082-507	70-2R-1C-5.5	8HLE-50E	8NLE-50E
676C546G15	70-2R-1C-5.5X	71-207-082-508	100-3R-1C-5.5	8HLE-65E	8NLE-65E
676C546G16	100-3R-1C-5.5X	71-207-082-509	130-4R-1C-5.5	8HLE-80E	8NLE-80E
676C546G17	130-4R-1C-5.5X	71-207-082-510	170-6R-1C-5.5	8NLE-100E	8NLE-100E
676C546G18	150-5R-1C-5.5X	71-207-082-511	200-9R-1C-5.5	8NLE-10E	8NLE-10E
676C546G19	170-6R-1C-5.5X	71-207-082-512	230-12R-1C-5.5	8NLE-15E	8NLE-15E
676C546G22	200-9R-1C-5.5X	71-302-077-501	390-18R-2C-2.75	8NLE-20E	8NLE-20E
676C546G25	230-12R-1C-5.5X	71-302-077-502	450-24R-2C-2.75	8NLE2-100E	8NLE2-100E
677C452G01	1/2E-8PT-5.5	71-302-077-503	390-18R-2C-5.5	8NLE2-125E	8NLE2-125E
677C452G02	1/2E-8PT-8.25	71-302-077-504	450-24R-2C-5.5	8NLE2-150E	8NLE2-150E
677C452G03	1/2E-11PT-15.5	718A41G03	20E-1C-8.25	8NLE2-180E	8NLE2-180E
677C452G04	1/2E-16PT-25.5	718A41G04	25E-1C-8.25	8NLE2-200E	8NLE2-200E

# Cross Reference



Competition	Littelfuse	Competition	Littelfuse	Competition	Littelfuse
8NLE-25E	8NLE-25E	9F60FJE040	8NLE-40E	9F60LJD503	100-3R-1C-5.5
8NLE-30E	8NLE-30E	9F60FJE050	8NLE-50E	9F60LJD504	130-4R-1C-5.5
8NLE-40E	8NLE-40E	9F60FJE065	8NLE-65E	9F60LJD506	170-6R-1C-5.5
8NLE-50E	8NLE-50E	9F60FJE080	8NLE-80E	9F60LJD509	200-9R-1C-5.5
8NLE-65E	8NLE-65E	9F60FJE100	8NLE-100E	9F60LJD512	230-12R-1C-5.5
8NLE-80E	8NLE-80E	9F60FMH020	20E-1C-15.5	9F60LJD802	70-2R-1C-5.5
9F60AAA003	3E-4PT-6	9F60FMH025	25E-1C-15.5	9F60LJD803	100-3R-1C-5.5
9F60AAA005	5E-4PT-6	9F60FMH030	30E-1C-15.5	9F60LJD804	130-4R-1C-5.5
9F60AAA007	7E-4PT-6	9F60FMH040	40E-1C-15.5	9F60LJD806	170-6R-1C-5.5
9F60AAA010	10E-4PT-6	9F60FMH050	50E-1C-15.5	9F60LJD809	200-9R-1C-5.5
9F60AAB001	1E-4PT-2.4	9F60FNJ015	15E-1C-25.8	9F60LJD812	230-12R-1C-5.5
9F60AAB002	2E-4PT-2.4	9F60FNJ020	20E-1C-25.8	9F60LJN302	70-2R-1C-5.5S
9F60BBB001	1E-6PT-2.75	9F60FNJ025	25E-1C-25.8	9F60LJN303	100-3R-1C-5.5S
9F60BBB002	2E-6PT-2.75	9F60FNJ030	30E-1C-25.8	9F60LJN304	130-4R-1C-5.5S
9F60BBB003	3E-6PT-2.75	9F60FNJ040	40E-1C-25.8	9F60LJN306	170-6R-1C-5.5S
9F60BBD001	1E-6PT-5.5	9F60FNJ050	50E-1C-25.8	9F60LJN309	200-9R-1C-5.5S
9F60BBD002	2E-6PT-5.5	9F60FPK015	15E-1C-38.0	9F60LJN312	230-12R-1C-5.5S
9F60BBD003	3E-6PT-5.5	9F60FPK020	20E-1C-38.0	9F60MCB518	390-18R-2C-2.75
9F60BBD905	1/2E-6PT-5.5	9F60FPK025	25E-1C-38.0	9F60MCB524	450-24R-2C-2.75
9F60BDB001	1E-8PT-2.75	9F60FPK030	30E-1C-38.0	9F60MCB818	390-18R-2C-2.75
9F60BDB002	2E-8PT-2.75	9F60FPK040	40E-1C-38.0	9F60MCB824	450-24R-2C-2.75
9F60BDB003	3E-8PT-2.75	9F60FPK050	50E-1C-38.0	9F60MCL318	390-18R-2C-2.75S
9F60BDD001	1E-8PT-5.5	9F60GCB125	125E-2C-2.75	9F60MCL324	450-24R-2C-2.75S
9F60BDD002	2E-8PT-5.5	9F60GCB150	150E-2C-2.75	9F60MJD518	390-18R-2C-5.5
9F60BDD003	3E-8PT-5.5	9F60GCB200	200E-2C-2.75	9F60MJD524	450-24R-2C-5.5
9F60BDD905	1/2E-8PT-5.5	9F60GJC400	400E-2C-5.5	9F60MJD818	390-18R-2C-5.5
9F60BDD905	1/2E-8PT-8.25	9F60HJB125	125E-2C-5.5	9F60MJD824	450-24R-2C-5.5
9F60BDE001	1E-8PT-8.25	9F60HJB150	150E-2C-5.5	9F60MJN318	390-18R-2C-5.5S
9F60BDE002	2E-8PT-8.25	9F60HJB200	200E-2C-5.5	9F60MJN324	450-24R-2C-5.5S
9F60BDE003	3E-8PT-8.25	9F60HJD125	125E-2C-5.5	9F62DCB080	80E-1C-5.5
9F60BDE905	1/2E-8PT-8.25	9F60HJD150	150E-2C-5.5	9F62DCB100	100E-1C-5.5
9F60BDN001	1E-8PT-5.5	9F60HJD200	200E-2C-5.5	9F62DCB125	125E-1C-5.5
9F60BDN905	1/2E-8PT-5.5	9F60HJE200	8NLE2-200E	9F62DCB150	150E-1C-5.5
9F60BHH001	1E-11PT-15.5	9F60HMH065	65E-2C-15.5	9F62DCB200	200E-1C-5.5
9F60BHH002	2E-11PT-15.5	9F60HMH080	80E-2C-15.5	9F62DCC065	8NLE-65E
9F60BHH003	3E-11PT-15.5	9F60HMH100	100E-2C-15.5	9F62DCC080	8NLE-80E
9F60BHH905	1/2E-11PT-15.5	9F60HNJ065	65E-2C-25.8	9F62DCC100	8NLE-100E
9F60CCB010	10E-1C-2.75	9F60HNJ080	80E-2C-25.8	9F62DCC125	125E-1C-8.25
9F60CCB015	15E-1C-2.75	9F60HNJ100	100E-2C-25.8	9F62DCC150	150E-1C-8.25
9F60ECB030	30E-1C-2.75	9F60HPK065	65E-2C-38.0	9F62DDD050	50E-1C-15.5
9F60ECB040	40E-1C-2.75	9F60HPK080	65E-2C-38.0	9F62DDD065	65E-1C-15.5
9F60ECB050	50E-1C-2.75	9F60LCB502	70-2R-1C-2.75	9F62DDD080	80E-1C-15.5
9F60ECB065	65E-1C-2.75	9F60LCB503	100-3R-1C-2.75	9F62DDD100	100E-1C-15.5
9F60ECB080	80E-1C-2.75	9F60LCB504	130-4R-1C-2.75	9F62FCB250	250E-2C-5.5
9F60ECB100	100E-1C-2.75	9F60LCB506	170-6R-1C-2.75	9F62FCB300	300E-2C-5.5
9F60FJB030	30E-1C-5.5	9F60LCB509	200-9R-1C-2.75	9F62FCB350	350E-2C-5.5
9F60FJB040	40E-1C-5.5	9F60LCB512	230-12R-1C-2.75	9F62FCB400	400E-2C-5.5
9F60FJB050	50E-1C-5.5	9F60LCB802	70-2R-1C-2.75	9F62FCB450	450E-2C-5.5
9F60FJB065	65E-1C-5.5	9F60LCB803	100-3R-1C-2.75	9F62FCC175	175E-2C-8.25
9F60FJB080	80E-1C-5.5	9F60LCB804	130-4R-1C-2.75	9F62FCC200	200E-2C-8.25
9F60FJB100	100E-1C-5.5	9F60LCB806	170-6R-1C-2.75	9F62FCC250	250E-2C-8.25
9F60FJD030	30E-1C-5.5	9F60LCB809	200-9R-1C-2.75	9F62FDD125	125E-2C-15.5
9F60FJD040	40E-1C-5.5	9F60LCB812	230-12R-1C-2.75	9F62FDD150	150E-2C-15.5
9F60FJD050	50E-1C-5.5	9F60LCL302	70-2R-1C-2.75S	9F62FDD175	175E-2C-15.5
9F60FJD065	65E-1C-5.5	9F60LCL303	100-3R-1C-2.75S	9F62FDD200	200E-2C-15.5
9F60FJD080	80E-1C-5.5	9F60LCL304	130-4R-1C-2.75S	9F62HCC020	8NLE-20E
9F60FJD100	100E-1C-5.5	9F60LCL306	170-6R-1C-2.75S	9F62HCC025	8NLE-25E
9F60FJE020	8NLE-20E	9F60LCL309	200-9R-1C-2.75S	9F62HCC030	8NLE-30E
9F60FJE025	8NLE-25E	9F60LCL312	230-12R-1C-2.75S	9F62HCC040	8NLE-40E
9F60FJE030	8NLE-30E	9F60LJD502	70-2R-1C-5.5	9F62HCC050	8NLE-50E

# Cross Reference



Competition	Littelfuse	Competition	Littelfuse	Competition	Littelfuse
9F62HDD020	20E-1C-15.5	A072F1D0R0-9R	200-9R-1C-8.25	A155F2D0R0-65E	65E-2C-15.5
9F62HDD025	25E-1C-15.5	A072F2D0R0-18R	390-18R-2C-8.25	A155F2D0R0-80E	80E-2C-15.5
9F62HDD030	30E-1C-15.5	A072F2D0R0-24R	450-24R-2C-8.25	A240R12R	230-12R-1C-2.75
9R2	200-9R-1C-2.75	A1550X0.5E-1PT	1/2E-11PT-15.5	A240R18R	390-18R-2C-2.75
9R5	200-9R-1C-5.5	A1550X100E-1	100E-2C-15.5	A240R24R	450-24R-2C-2.75
A055B1D0R0-12R	230-12R-1BI-5.5	A1550X100E-1D	15GSE-100E	A240R2R	70-2R-1C-2.75
A055B1D0R0-2R	70-2R-1BI-5.5	A1550X100E-1F	100E-2C-15.5	A240R36R	650-36R-3C-2.75
A055B1D0R0-3R	100-3R-1BI-5.5	A1550X-10E-1F	10E-1C-15.5	A240R3R	100-3R-1C-2.75
A055B1D0R0-4R	130-4R-1BI-5.5	A1550X125E-1D	15GSE2-125E	A240R4R	130-4R-1C-2.75
A055B1D0R0-5R	150-5R-1BI-5.5	A1550X150E-1D	15GSE2-150E	A240R5R	150-5R-1C-2.75
A055B1D0R0-6R	170-6R-1BI-5.5	A1550X-15E-1F	15E-1C-15.5	A240R6R	170-6R-1C-2.75
A055B1D0R0-9R	200-9R-1BI-5.5	A1550X175E-1D	15GSE2-175E	A240R9R	200-9R-1C-2.75
A055B2D0R0-18R	390-18R-2BI-5.5	A1550X1E-1PT	1E-11PT-15.5	A240T1E-1	1E-4PT-2.4
A055B2D0R0-24R	450-24R-2BI-5.5	A1550X200E-1D	15GSE2-200E	A240T2E-1	2E-4PT-2.4
A055C1D0R0-100E	100E-1CL-5.5	A1550X20E-1	20E-1C-15.5	A24-12R	230-12R-1C-2.75
A055C1D0R0-10E	10E-1CL-5.5	A1550X20E-1F	20E-1C-15.5	A24-18R	390-18R-2C-2.75
A055C1D0R0-125E	125E-1CL-5.5	A1550X25E-1	25E-1C-15.5	A24-24R	450-24R-2C-2.75
A055C1D0R0-150E	150E-1CL-5.5	A1550X25E-1F	25E-1C-15.5	A24-2R	70-2R-1C-2.75
A055C1D0R0-15E	15E-1CL-5.5	A1550X30E-1	30E-1C-15.5	A24-3R	100-3R-1C-2.75
A055C1D0R0-20E	20E-1CL-5.5	A1550X30E-1F	30E-1C-15.5	A24-4R	130-4R-1C-2.75
A055C1D0R0-25E	25E-1CL-5.5	A1550X40E-1	40E-1C-15.5	A24-6R	170-6R-1C-2.75
A055C1D0R0-30E	30E-1CL-5.5	A1550X40E-1F	40E-1C-15.5	A24-9R	200-9R-1C-2.75
A055C1D0R0-40E	40E-1CL-5.5	A1550X50E-1	50E-1C-15.5	A480R12R-1	230-12R-1C-5.5
A055C1D0R0-50E	50E-1CL-5.5	A1550X50E-1F	50E-1C-15.5	A480R12R-1HE	230-12R-1C-5.5W
A055C1D0R0-65E	65E-1CL-5.5	A1550X65E-1	65E-2C-15.5	A480R12R-1HS	230-12R-1C-5.5W
A055C1D0R0-80E	80E-1CL-5.5	A1550X65E-1D	15GSE-65E	A480R18R-1	390-18R-2C-5.5
A055F1D0R0-100E	100E-1C-5.5	A1550X65E-1F	65E-2C-15.5	A480R18R-1HE	390-18R-2C-5.5W
A055F1D0R0-10E	10E-1C-5.5	A1550X80E-1	80E-2C-15.5	A480R18R-1HS	390-18R-2C-5.5W
A055F1D0R0-125E	125E-1C-5.5	A1550X80E-1D	15GSE-80E	A480R24R-1	450-24R-2C-5.5
A055F1D0R0-150E	150E-1C-5.5	A1550X80E-1F	80E-2C-15.5	A480R24R-1HE	450-24R-2C-5.5W
A055F1D0R0-15E	15E-1C-5.5	A155C1D0R0-100E	100E-1CL-15.5	A480R24R-1HS	450-24R-2C-5.5W
A055F1D0R0-175E	175E-1C-5.5	A155C1D0R0-10E	10E-1CL-15.5	A480R2R-1	70-2R-1C-5.5
A055F1D0R0-200E	200E-1C-5.5	A155C1D0R0-15E	15E-1CL-15.5	A480R2R-1HE	70-2R-1C-5.5W
A055F1D0R0-20E	20E-1C-5.5	A155C1D0R0-20E	20E-1CL-15.5	A480R2R-1HS	100-3R-1C-5.5W
A055F1D0R0-25E	25E-1C-5.5	A155C1D0R0-25E	25E-1CL-15.5	A480R36R-1	650-36R-2C-5.5
A055F1D0R0-30E	30E-1C-5.5	A155C1D0R0-30E	30E-1CL-15.5	A480R3R-1	130-4R-1C-5.5W
A055F1D0R0-40E	40E-1C-5.5	A155C1D0R0-40E	40E-1CL-15.5	A480R3R-1HE	150-5R-1C-5.5W
A055F1D0R0-50E	50E-1C-5.5	A155C1D0R0-50E	50E-1CL-15.5	A480R3R-1HS	170-6R-1C-5.5W
A055F1D0R0-65E	65E-1C-5.5	A155C1D0R0-65E	65E-1CL-15.5	A480R4R-1	200-9R-1C-5.5W
A055F1D0R0-80E	80E-1C-5.5	A155C1D0R0-80E	80E-1CL-15.5	A480R4R-1HE	230-12R-1C-5.5W
A055F2D0R0-250E	250E-2C-5.5	A155C2D0R0-125E	125E-2CL-15.5	A480R4R-1HS	230-12R-1C-5.5W
A055F2D0R0-300E	300E-2C-5.5	A155C3D0R0-150E	150E-3CL-15.5	A480R5R-1	150-5R-1C-5.5
A055F2D0R0-350E	350E-2C-5.5	A155C3D0R0-200E	200E-3CL-15.5	A480R5R-1HE	150-5R-1C-5.5W
A055F2D0R0-400E	400E-2C-5.5	A155C3D0R0-250E	250E-3CL-15.5	A480R5R-1HS	150-5R-1C-5.5W
A055F2D0R0-450E	450E-2C-5.5	A155C3D0R0-300E	300E-3CL-15.5	A480R6R-1	170-6R-1C-5.5
A072B1D0R0-12R	230-12R-1BI-8.25	A155F1D0R0-100E	15GSE-100E	A480R6R-1HE	170-6R-1C-5.5W
A072B1D0R0-2R	70-2R-1BI-8.25	A155F1D0R0-10E	10E-1C-15.5	A480R6R-1HS	170-6R-1C-5.5W
A072B1D0R0-3R	100-3R-1BI-8.25	A155F1D0R0-15E	15E-1C-15.5	A480R9R-1	200-9R-1C-5.5
A072B1D0R0-4R	130-4R-1BI-8.25	A155F1D0R0-20E	20E-1C-15.5	A480R9R-1HE	200-9R-1C-5.5W
A072B1D0R0-5R	150-5R-1BI-8.25	A155F1D0R0-25E	25E-1C-15.5	A480R9R-1HS	200-9R-1C-5.5W
A072B1D0R0-6R	170-6R-1BI-8.25	A155F1D0R0-30E	30E-1C-15.5	A480T2E-1	2E-5PT-4.8
A072B1D0R0-9R	200-9R-1BI-8.25	A155F1D0R0-40E	40E-1C-15.5	A48-12R	230-12R-1C-5.5
A072B2D0R0-18R	390-18R-2BI-8.25	A155F1D0R0-50E	50E-1C-15.5	A48-18R	390-18R-2C-5.5
A072B2D0R0-24R	450-24R-2BI-8.25	A155F1D0R0-65E	15GSE-65E	A48-24R	450-24R-2C-5.5
A072F1D0R0-12R	230-12R-1C-8.25	A155F1D0R0-80E	15GSE-80E	A48-2R	70-2R-1C-5.5
A072F1D0R0-2R	70-2R-1C-8.25	A155F2D0R0-100E	100E-2C-15.5	A48-3R	100-3R-1C-5.5
A072F1D0R0-3R	100-3R-1C-8.25	A155F2D0R0-125E	15GSE2-125E	A48-4R	130-4R-1C-5.5
A072F1D0R0-4R	130-4R-1C-8.25	A155F2D0R0-150E	15GSE2-150E	A48-6R	170-6R-1C-5.5
A072F1D0R0-5R	150-5R-1C-8.25	A155F2D0R0-175E	15GSE2-175E	A48-9R	200-9R-1C-5.5
A072F1D0R0-6R	170-6R-1C-8.25	A155F2D0R0-200E	15GSE2-200E	A550T0.5E-1	1/2E-8PT-5.5

# Cross Reference



Competition	Littelfuse	Competition	Littelfuse	Competition	Littelfuse
A550T1E-1	1E-8PT-5.5	FC464-2E		JCL12R	230-12R-1C-5.5
A550X100E-1	100E-1C-5.5	FC464-3E	3E-6PT-5.5	JCL18R	390-18R-2C-5.5
A550X100E-1F	100E-1C-5.5	FC464-5E	5E-6PT-5.5	JCL24R	450-24R-2C-5.5
A550X10E-1F	10E-1C-5.5	FC465-1/2E	1/2E-8PT-5.5	JCL2R	70-2R-1C-5.5
A550X125E-1	125E-1C-5.5	FC465-1E	103L750G13	JCL3R	100-3R-1C-5.5
A550X125E-1F	125E-1C-5.5	FC465-2E	2E-8PT-5.5	JCL4R	130-4R-1C-5.5
A550X150E-1	150E-1C-5.5	FC465-3E	3E-8PT-5.5	JCL5R	150-5R-1C-5.5
A550X150E-1F	150E-1C-5.5	FC465-5E	5E-8PT-5.5	JCL6R	170-6R-1C-5.5
A550X15E-1F	15E-1C-5.5	FC466-1/2E	1/2E-8PT-8.25	JCL9R	200-9R-1C-5.5
A550X175E-1F	175E-1C-5.5	FC466-1E	1E-8PT-8.25	JCL-A-12R	230-12R-1C-5.5W
A550X200E-1	200E-1C-5.5	FC466-2E	2E-8PT-8.25	JCL-A-18R	390-18R-2C-5.5W
A550X200E-1F	200E-1C-5.5	FC466-3E	3E-8PT-8.25	JCL-A-24R	450-24R-2C-5.5W
A550X20E-1F	20E-1C-5.5	FC467-1/2E	500E-11PT-15.5	JCL-A-2R	70-2R-1C-5.5W
A550X250E-1	250E-2C-5.5	FC467-1E	103L750G20	JCL-A-3R	100-3R-1C-5.5W
A550X250E-1F	250E-2C-5.5	FC467-2E	2E-11PT-15.5	JCL-A-4R	130-4R-1C-5.5W
A550X25E-1F	25E-1C-5.5	FC467-3E	3E-11PT-15.5	JCL-A-5R	150-5R-1C-5.5W
A550X300E-1	300E-2C-5.5	FCA22-1/2E	1/2E-16PT-25.5	JCL-A-6R	170-6R-1C-5.5W
A550X300E-1F	300E-2C-5.5	FCA22-1E	1E-16PT-25.5	JCL-A-9R	200-9R-1C-5.5W
A550X30E-1	30E-1C-5.5	JCD1E	1E-4PT-2.4	JCN100E	15NLE2-100E
A550X30E-1F	30E-1C-5.5	JCD2E	2E-4PT-2.4	JCN125X	15NLE2-125E
A550X350E-1F	350E-2C-5.5	JCE2E	2E-5PT-4.8	JCN150E	15NLE3-150E
A550X400E-1	400E-2C-5.5	JCG-12R	230-12R-1C-5.5SW	JCN-15E	15NLE-15E
A550X400E-1F	400E-2C-5.5	JCG-18R	390-18R-2C-5.5SW	JCN-20E	15NLE-20E
A550X40E-1	40E-1C-5.5	JCG-24R	450-24R-2C-5.5SW	JCN-25E	15NLE-25E
A550X40E-1F	40E-1C-5.5	JCG-2R	70-2R-1C-5.5SW	JCN30E	15NLE-30E
A550X450E-1	450E-2C-5.5	JCG-3R	100-3R-1C-5.5SW	JCN40E	15NLE-40E
A550X450E-1F	450E-2C-5.5	JCG-4R	130-4R-1C-5.5SW	JCN50E	15NLE-50E
A550X50E-1	50E-1C-5.5	JCG-5R	150-5R-1C-5.5SW	JCN65E	15NLE-65E
A550X50E-1F	50E-1C-5.5	JCG-6R	170-6R-1C-5.5SW	JCN80E	15NLE2-80E
A550X65E-1	65E-1C-5.5	JCG-9R	200-9R-1C-5.5SW	JCQ0.5E	1/2E-8PT-5.5
A550X65E-1F	65E-1C-5.5	JCH-12R	230-12R-1C-2.75SW	JCQ10E	10E-8PT-5.5
A550X80E-1	80E-1C-5.5	JCH-18R	390-18R-2C-2.75SW	JCQ1E	1E-8PT-5.5
A550X80E-1F	80E-1C-5.5	JCH-24R	450-24R-2C-2.75SW	JCQ5E	5E-8PT-5.5
A55C400E	400E-2C-5.5	JCH-2R	70-2R-1C-2.75SW	JCR-12R	230-12R-1C-8.25W
A825X100E-1	8NLE-100E	JCH-3R	100-3R-1C-2.75SW	JCR-18R	390-18R-2C-8.25W
A825X125E-1	8NLE2-125E	JCH-4R	130-4R-1C-2.75SW	JCR-24R	450-24R-2C-8.25W
A825X150E-1	8NLE2-150E	JCH-5R	150-5R-1C-2.75SW	JCR-2R	70-2R-1C-8.25W
A825X200E-1	8NLE2-200E	JCH-6R	170-6R-1C-2.75SW	JCR-3R	100-3R-1C-8.25W
A825X20E-1	8NLE-20E	JCH-9R	200-9R-1C-2.75SW	JCR-4R	130-4R-1C-8.25W
A825X25E-1	8NLE-25E	JCI0.5E	1/2E-8PT-8.25	JCR-5R	150-5R-1C-8.25W
A825X30E-1	8NLE-30E	JCJ0.5E	1/2E-16PT-25.5	JCR-6R	170-6R-1C-8.25W
A825X40E-1	8NLE-40E	JCJ1E	1E-16PT-25.5	JCR-9R	200-9R-1C-8.25W
A825X50E-1	8NLE-50E	JCK12R	230-12R-1C-2.75	JCT0.5E	1/2E-11PT-15.5
A825X65E-1	8NLE-65E	JCK18R	390-18R-2C-2.75	JCT1E	1E-11PT-15.5
A825X80E-1	8NLE-80E	JCK24R	450-24R-2C-2.75	JCT3E	3E-16PT-15.5
A830T0.5E-1	1/2E-8PT-8.25	JCK2R	70-2R-1C-2.75	JCT5E	5E-16PT-15.5
FC460-3E	3E-4PT-6	JCK3R	100-3R-1C-2.75	JCU100E	5NLE-100E
FC460-5E	5E-4PT-6	JCK4R	130-4R-1C-2.75	JCU-10E	5NLE-10E
FC460-7E	7E-4PT-6	JCK5R	150-5R-1C-2.75	JCU-125E	5NLE-125E
FC460-10E	10E-4PT-6	JCK6R	170-6R-1C-2.75	JCU150E	5NLE-150E
FC461-1E	1E-4PT-2.4	JCK9R	200-9R-1C-2.75	JCU-15E	5NLE-15E
FC461-2E	2E-4PT-2.4	JCK-A-12R	230-12R-1C-2.75W	JCU200E	5NLE-200E
FC462-1E	1E-6PT-2.75	JCK-A-18R	390-18R-2C-2.75W	JCU-20E	5NLE-20E
FC462-2E	2E-6PT-2.75	JCK-A-24R	450-24R-2C-2.75W	JCU250E	5NLE2-250E
FC462-3E	3E-6PT-2.75	JCK-A-2R	70-2R-1C-2.75W	JCU-25E	5NLE-25E
FC463-1E	1E-8PT-2.75	JCK-A-3R	100-3R-1C-2.75W	JCU300E	5NLE2-300E
FC463-2E	2E-8PT-2.75	JCK-A-4R	130-4R-1C-2.75W	JCU30E	5NLE-30E
FC463-3E	3E-8PT-2.75	JCK-A-5R	150-5R-1C-2.75W	JCU-350X	5NLE2-350E
FC464-1/2E	1/2E-6PT-5.5	JCK-A-6R	170-6R-1C-2.75W	JCU400X	5NLE2-400E
FC464-1E	1E-6PT-5.5	JCK-A-9R	200-9R-1C-2.75W	JCU-450X	5NLE2-450E

# Cross Reference



Competition	Littelfuse	Competition	Littelfuse	Competition	Littelfuse
JCU50E	5NLE-50E	JDZ-30E	30E-1C-8.25	LCT 3E	3E-16PT-15.5
JCU65E	5NLE-65E	JDZ-40E	40E-1C-8.25	LCT 5E	5E-16PT-15.5
JCU80E	5NLE-80E	JDZ-50E	50E-1C-8.25	LCU 100E	5NLE-100E
JCW-1/2E	1/2E-6PT-5.5	JDZ-65E	65E-1C-8.25	LCU 10E	5NLE-10E
JCW-1E	1E-6PT-5.5	JDZ-80E	80E-1C-8.25	LCU 125E	5NLE-125E
JCW-2E	2E-6PT-5.5	LCD 1E-4	1E-4PT-2.4	LCU 150E	5NLE-150E
JCW-3E	3E-6PT-5.5	LCD 2E-4	2E-4PT-2.4	LCU 15E	5NLE-15E
JCW-5E	5E-6PT-5.5	LCE 2E-4	2E-5PT-4.8	LCU 175E	5NLE-175E
JCX100E	100E-1C-2.75	LCL .5E	1/2E-8PT-8.25	LCU 200E	5NLE-200E
JCX10E	10E-1C-2.75	LCL .5E	1/2E-16PT-25.5	LCU 20E	5NLE-20E
JCX125E	125E-2C-2.75	LCL 1E	1E-16PT-25.5	LCU 250E	5NLE2-250E
JCX150E	150E-2C-2.75	LCK 12R	230-12R-1C-2.75	LCU 25E	5NLE-25E
JCX15E	15E-1C-2.75	LCK 18R	390-18R-1C-2.75	LCU 300E	5NLE2-300E
JCX200E	200E-2C-2.75	LCK 24R	450-24R-1C-2.75	LCU 30E	5NLE-30E
JCX20E	20E-1C-2.75	LCK 2R	70-2R-1C-2.75	LCU 350ED	5NLE2-350E
JCX250E	250E-2C-2.75	LCK 3R	100-3R-1C-2.75	LCU 400X	5NLE2-400E
JCX25E	25E-1C-2.75	LCK 4R	130-4R-1C-2.75	LCU 40E	5NLE-40E
JCX300E	300E-2C-2.75	LCK 5R	150-5R-1C-2.75	LCU 450X	5NLE2-450E
JCX30E	30E-1C-2.75	LCK 6R	170-6R-1C-2.75	LCU 50E	5NLE-50E
JCX400X	400E-2C-2.75	LCK 9R	200-9R-1C-2.75	LCU 65E	5NLE-65E
JCX50E	50E-1C-2.75	LCL 12R	230-12R-1C-5.5	LCU 80E	5NLE-80E
JCX65E	65E-1C-2.75	LCL 12R1	230-12R-1C-5.5W	LCX 100E	100E-1C-2.75
JCX80E	80E-1C-2.75	LCL 18R	390-18R-2C-5.5	LCX 10E	10E-1C-2.75
JCY100E	100E-1C-5.5	LCL 18R1	390-18R-2C-5.5W	LCX 125E	125E-2C-2.75
JCY125E	125E-1C-5.5	LCL 24R	450-24R-2C-5.5	LCX 150E	150E-2C-2.75
JCY150E	150E-1C-5.5	LCL 24R1	450-24R-2C-5.5W	LCX 200E	200E-2C-2.75
JCY200E	200E-1C-5.5	LCL 2R	70-2R-1C-5.5	LCX 250E	250E-2C-2.75
JCY250E	250E-2C-5.5	LCL 2R1	70-2R-1C-5.5W	LCX 300E	300E-2C-2.75
JCY300E	300E-2C-5.5	LCL 36R1	650-36R-2C-5.5W	LCX 30E	30E-1C-2.75
JCY30E	30E-1C-5.5	LCL 3R	100-3R-1C-5.5	LCX 400X	400E-2C-2.75
JCY400X	400E-2C-5.5	LCL 3R1	100-3R-1C-5.5W	LCX 50E	50E-1C-2.75
JCY40E	40E-1C-5.5	LCL 4R	130-4R-1C-5.5	LCX 65E	65E-1C-2.75
JCY450E	450E-2C-5.5	LCL 4R1	130-4R-1C-5.5W	LCX 80E	80E-1C-2.75
JCY50E	50E-1C-5.5	LCL 5R	150-5R-1C-5.5	LCY 100E	100E-1C-5.5
JCY65E	65E-1C-5.5	LCL 5R1	150-5R-1C-5.5W	LCY 125E	125E-1C-5.5
JCY80E	80E-1C-5.5	LCL 6R	170-6R-1C-5.5	LCY 150E	150E-1C-5.5
JCZ100E	8NLE-100E	LCL 6R1	170-6R-1C-5.5W	LCY 200E	200E-1C-5.5
JCZ125E	8NLE2-125E	LCL 9R	200-9R-1C-5.5	LCY 300E	300E-2C-5.5
JCZ150E	8NLE2-150E	LCL 9R1	200-9R-1C-5.5W	LCY 30E	30E-1C-5.5
JCZ-15E	8NLE-15E	LCN 20E	15NLE-20E	LCY 400X	400E-2C-5.5
JCZ200E	8NLE2-200E	LCN 100E	15NLE2-100E	LCY 40E	40E-1C-5.5
JCZ20E	8NLE-20E	LCN 100ES	15NLE-100E	LCY 450E	450E-2C-5.5
JCZ25E	8NLE-25E	LCN 125X	15NLE2-125E	LCY 50E	50E-1C-5.5
JCZ30E	8NLE-30E	LCN 150E	15NLE3-150E	LCY 65E	65E-1C-5.5
JCZ40E	8NLE-40E	LCN 15E	15NLE-15E	LCY 80E	80E-1C-5.5
JCZ50E	8NLE-50E	LCN 175ED	15NLE2-175E	LCZ 100E	8NLE-100E
JCZ65E	8NLE-65E	LCN 200ED	15NLE2-200E	LCZ 100ED	8NLE2-100E
JCZ80E	8NLE-80E	LCN 25E	15NLE-25E	LCZ 15E	8NLE-15E
JDN100E	100E-2C-15.5	LCN 30E	15NLE-30E	LCZ 200E	8NLE2-200E
JDN20E	20E-1C-15.5	LCN 40E	15NLE-40E	LCZ 20E	8NLE-20E
JDN25E	25E-1C-15.5	LCN 50E	15NLE-50E	LCZ 25E	8NLE-25E
JDN30E	30E-1C-15.5	LCN 65E	15NLE-65E	LCZ 30E	8NLE-30E
JDN40E	40E-1C-15.5	LCN 80E	15NLE2-80E	LCZ 40E	8NLE-40E
JDN50E	50E-1C-15.5	LCN 80ES	15NLE-80E	LCZ 50E	8NLE-50E
JDN65E	65E-2C-15.5	LCQ .5E	1/2E-8PT-5.5	LCZ 65E	8NLE-65E
JDN80E	80E-2C-15.5	LCQ 10E	10E-8PT-5.5	LCZ 80E	8NLE-80E
JDZ-100E	100E-1C-8.25	LCQ 5E	5E-8PT-5.5	LDN 100E	100E-1C-15.5
JDZ-125E	125E-1C-8.25	LCQ1E	1E-8PT-5.5	LDN 150E	150E-2C-15.5
JDZ-20E	20E-1C-8.25	LCT .5E	1/2E-11PT-15.5	LDN 175E	175E-2C-15.5
JDZ-25E	25E-1C-8.25	LCT 1E	1E-11PT-15.5	LDN 20E	20E-1C-15.5

# Cross Reference



Competition	Littelfuse	Competition	Littelfuse	Competition	Littelfuse
LDN 25E	25E-1C-15.5	NKCAX-170	170-6R-1C-5.5	RM28026	390-18R-2C-5.5
LDN 30E	30E-1C-15.5	NKCAX-200	200-9R-1C-5.5	RM28027	450-24R-2C-5.5
LDN 40E	40E-1C-15.5	NKCAX-230	230-12R-1C-5.5		
LDN 50E	50E-1C-15.5	NKCAX-390	390-18R-2C-5.5		
LDN 65E	65E-1C-15.5	NKCAX-450	450-24R-2C-5.5		
LDN 80E	80E-1C-15.5	NKCAX-70	70-2R-1C-5.5		
LDZ 100E	100E-1C-8.25	RM28001	70-2R-1C-2.75		
LDZ 125E	125E-1C-8.25	RM28002	100-3R-1C-2.75		
LDZ 150E	150E-1C-8.25	RM28003	130-4R-1C-2.75		
LDZ 200E	200E-2C-8.25	RM28004	170-6R-1C-2.75		
LDZ 20E	20E-1C-8.25	RM28005	200-9R-1C-2.75		
LDZ 250E	250E-2C-8.25	RM28006	230-12R-1C-2.75		
LDZ 25E	25E-1C-8.25	RM28007	390-18R-2C-2.75		
LDZ 30E	30E-1C-8.25	RM28008	450-24R-2C-2.75		
LDZ 40E	40E-1C-8.25	RM28020	70-2R-1C-5.5		
LDZ 50E	50E-1C-8.25	RM28021	100-3R-1C-5.5		
LDZ 65E	65E-1C-8.25	RM28022	130-4R-1C-5.5		
LDZ 80E	80E-1C-8.25	RM28023	170-6R-1C-5.5		
NKCAX-100	100-3R-1C-5.5	RM28024	200-9R-1C-5.5		
NKCAX-130	130-4R-1C-5.5	RM28025	230-12R-1C-5.5		