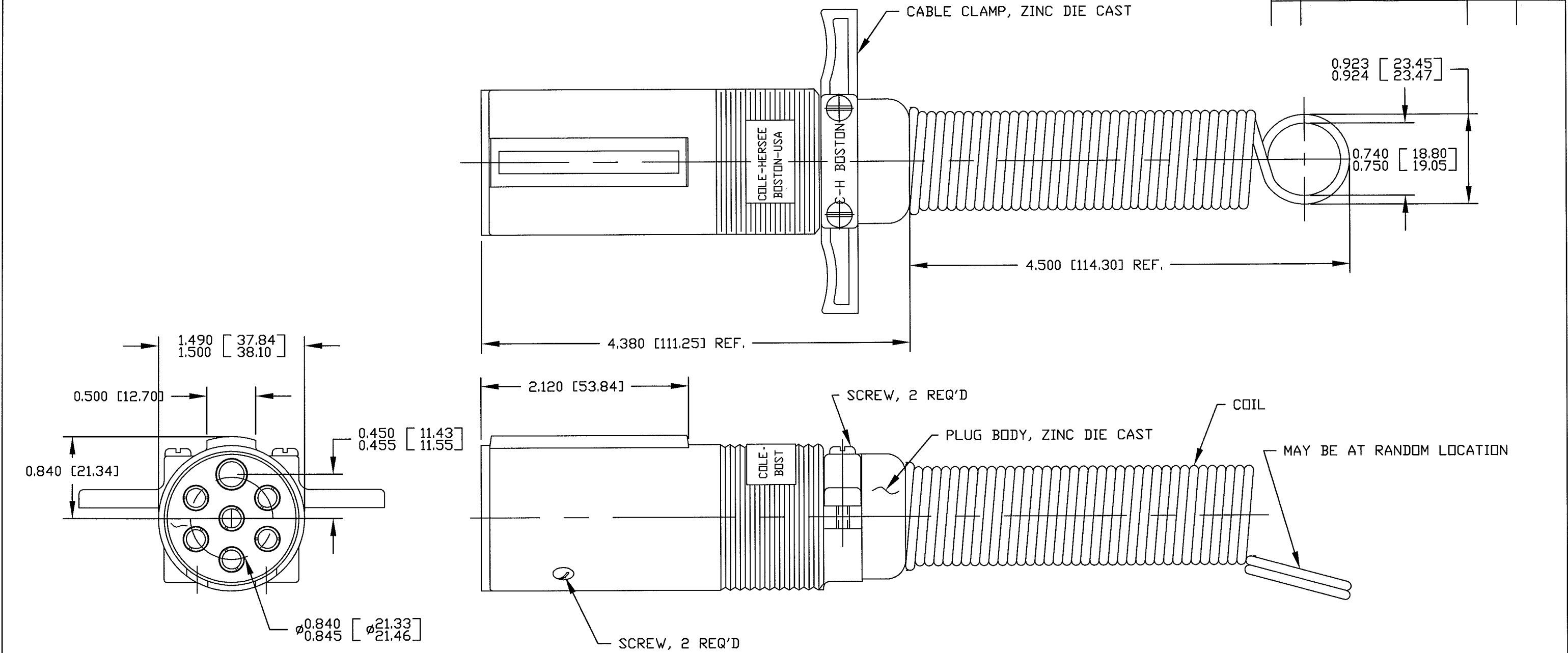



Revision Control Record			
Rev.	Description of Change	ECN No.	Date
AA	NOTE CHANGE	06369	11/13/06
AB	ADD TORQUE SPEC.	13069	01/28/13



- NOTES:
- CONFORMS TO S.A.E. J560A
  - WILL ACCEPT UP TO 8 GA [8.0mm<sup>2</sup>] WIRE AT GROUND TERMINAL (WHITE) AND UP TO 10GA [5.0mm<sup>2</sup>] WIRE ALL OTHER TERMINALS
  - 7 SET SCREWS, #8-32, SUPPLIED IN A PLASTIC BAG
  - MAX TORQUE ON SET SCREWS #8-32 OF 8 INCH/LBS

<b>Tolerances</b> Unless otherwise specifically noted, the following are default tolerances; * 2-place Decimal Dimensions +/- .02" * 3-place Decimal Dimensions +/- .005" * Angular Dimensions +/- 1.0 Deg. * Metric: Refer to equivalent English Dimension Tolerance >>> NOTE: All tolerances are Non-Cumulative. <<<		<b>PROPRIETARY INFORMATION</b> This Engineering Drawing, and the information contained herein, is proprietary to Cole Hersee Company and may not be disclosed, re-produced, or in any other way transferred or communicated to any other party without the express written consent of an authorized representative of Cole Hersee Company.		<b>Special Characteristics:</b> <div> <div>CC</div> Critical Characteristic, relating to Safety and/or Regulatory Compliance </div> <div> <div>X</div> Significant Characteristic relating to Process Control (SPC) </div> <div> <div>KC</div> Control Dimension relating to Form - Fit - Function as defined by Cole Hersee Company and/or the Customer </div> <div>           (Note that the identification of any Characteristics as being "Special" does not alter the requirement that ALL specified dimensions &amp; tolerances must be met.)         </div>		<div>  <b>Cole Hersee Co.</b>            20 Old Colony Ave., South Boston, MA, 02127            Phn: 617-268-2100 Web: www.colehersee.com         </div>	
<b>Dimensional Units</b> All dimensions are expressed in inches except those shown in brackets (xxx) are expressed in millimeters  <b>"REF." or an Asterisk (*)</b> = Non-Toleranced Reference Dimension, shown for clarification purposes only.		<b>DESIGN CONTROL</b> It is the responsibility of the individual using / referencing this drawing to assure that the noted design revision level agrees with the revision level of the Controlled Document (Master Drawing). This is a NON-CONTROLLED DOCUMENT unless otherwise specifically noted.  <b>DO NOT SCALE</b> - Dimensional variation may occur during printing / reproduction.		<b>Description:</b>  <h1>PLUG BODY ASSY</h1>		<b>Drawing / Part No.:</b> <div>1255</div>	
<b>Used On or Ref.:</b>	<b>Scale:</b> 1:1	<b>Drawn By:</b> MW	<b>Date Drawn:</b> 10/27/50	<b>Responsible Engineer:</b> NA	<b>Pg. 1 of 1</b>	<b>AB</b>	