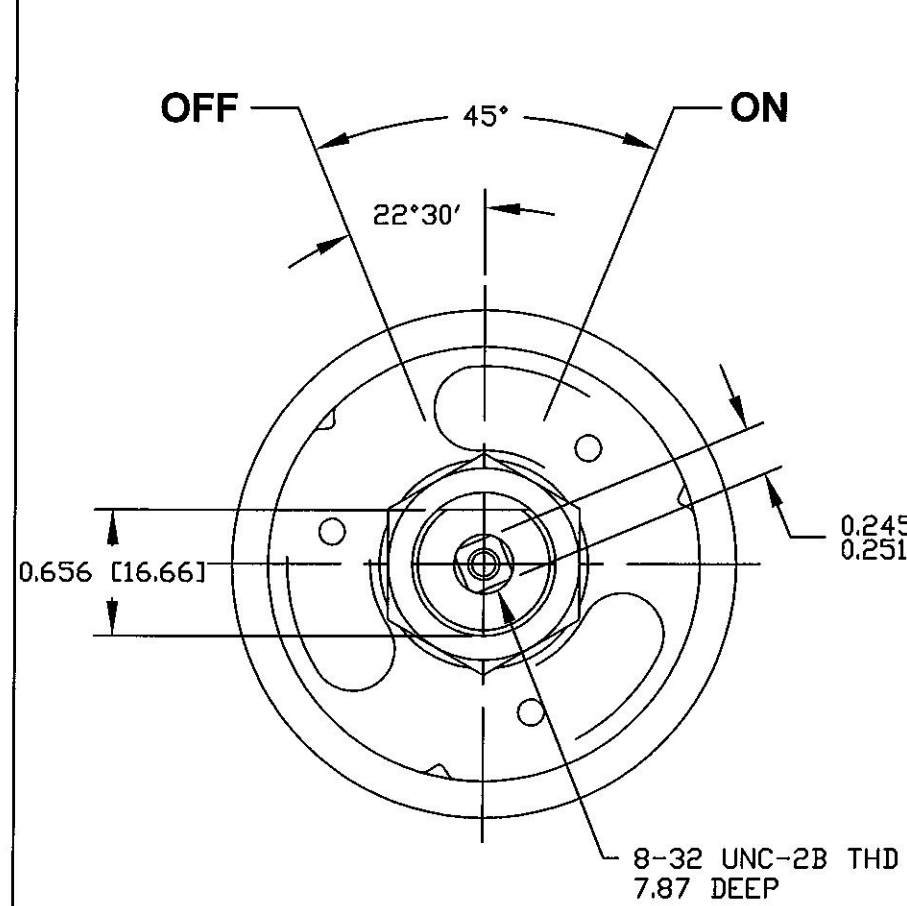


Revision Control Record			
Rev.	Description of Change	ECN No.	Date
A	REVISED RATINGS	05199	05/10/05
B	BOM CHANGE	10167	4/30/10

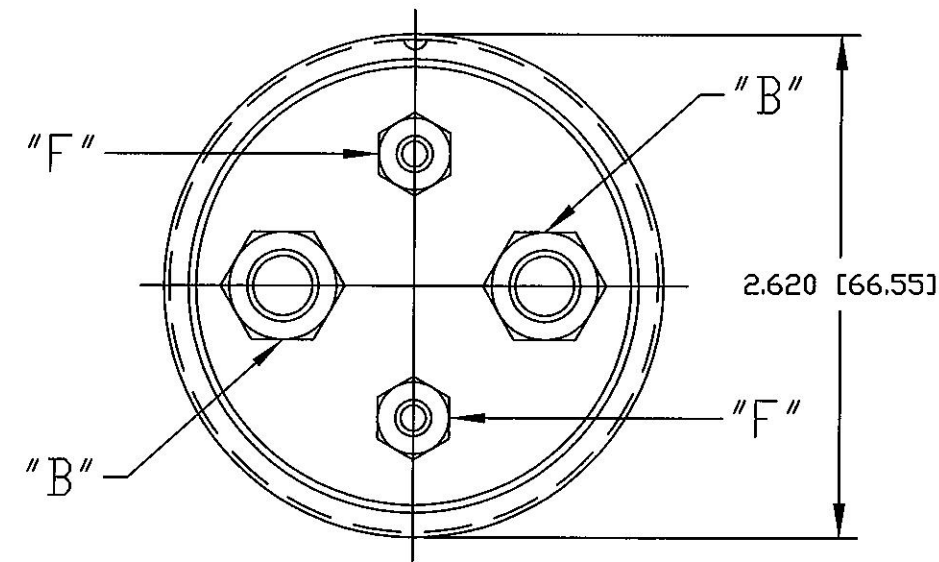
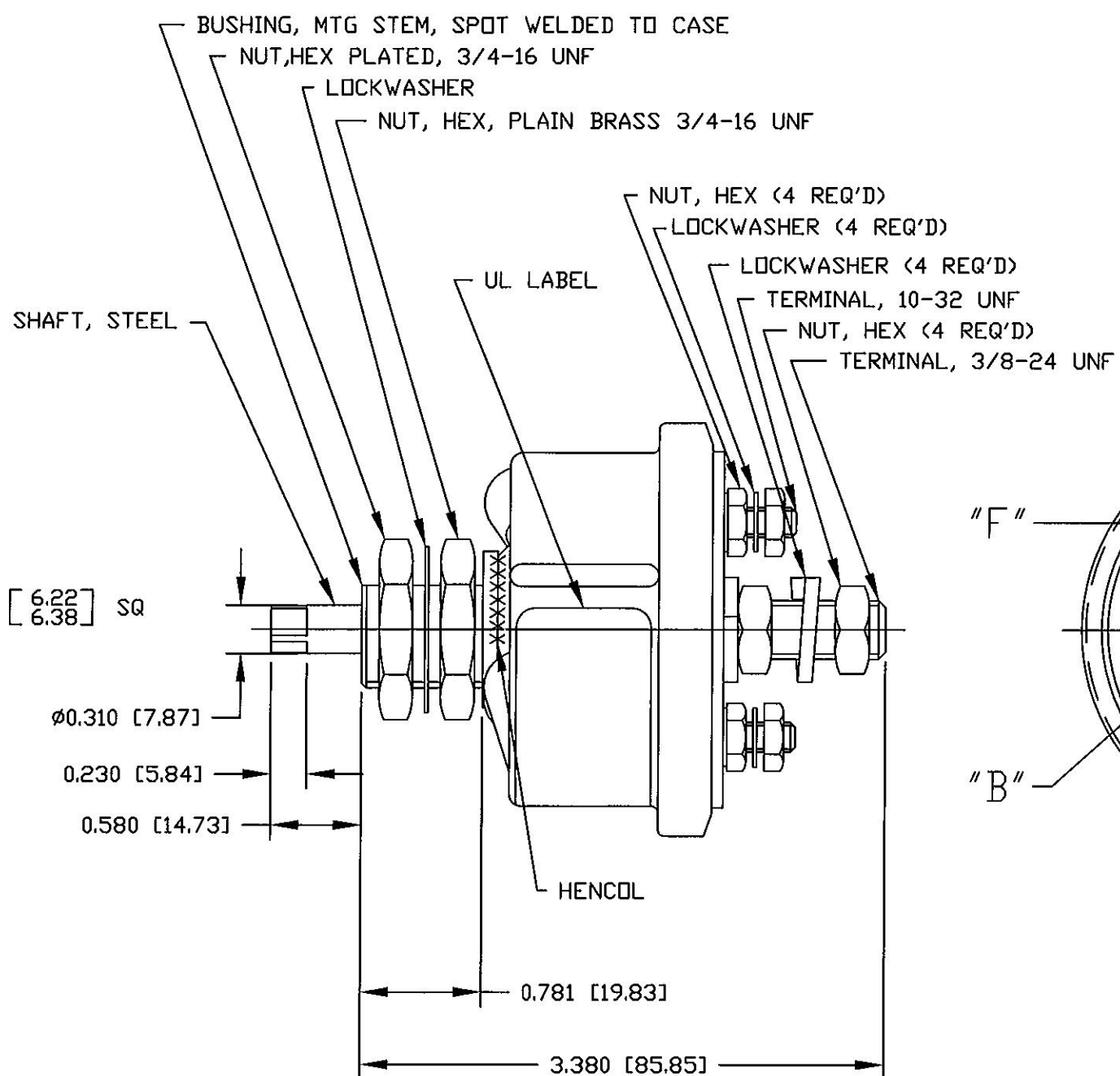
"F & F" CIRCUIT MUST
OPEN BEFORE "B & B"
CIRCUIT



SWITCH SHOWN IN
OFF POSITION

CONTINUOUS RATING:
6-12-24-36 VOLTS DC.
LARGE STUDS("B" TERMINALS): 175 AMPS (A)
SMALL STUDS("F" TERMINALS): 20 AMPS

INTERMITTENT RATING:
6-12-24-36 VOLTS DC.
LARGE STUDS ("B" TERMINALS): 1000 AMPS (A)
15 SEC. "ON", 5 MIN. "OFF"



- NOTES:
1. ALL STEEL PARTS PLATED
2. ALL DIMENSIONS REFERENCE
3. SILVER CONTACT SURFACES
4. O-RING SEAL AT BUSHING

<p>Tolerances Unless otherwise specifically noted, the following are default tolerances:</p> <ul style="list-style-type: none"> 2-place Decimal Dimensions ± 0.02" 3-place Decimal Dimensions ± 0.005" Angular Dimensions ± 1.0 Deg. Metric: Refer to equivalent English Dimension Tolerance <p>>>> NOTE: All tolerances are Non-Cumulative. <<<</p> <p>Dimensional Units All dimensions are expressed in inches except those shown in brackets (xxx) are expressed in millimeters</p> <p>"REF." or an Asterisk (*) = Non-Toleranced Reference Dimension, shown for clarification purposes only.</p>		<p>PROPRIETARY INFORMATION This Engineering Drawing, and the information contained herein, is proprietary to Cole Hersee Company and may not be disclosed, re-produced, or in any other way transferred or communicated to any other party without the express written consent of an authorized representative of Cole Hersee Company.</p> <p>DESIGN CONTROL It is the responsibility of the individual using / referencing this drawing to assure that the noted design revision level agrees with the revision level of the Controlled Document (Master Drawing). This is a NON-CONTROLLED DOCUMENT unless otherwise specifically noted.</p> <p>DO NOT SCALE - Dimensional variation may occur during printing / reproduction.</p>		<p>Special Characteristics:</p> <ul style="list-style-type: none"> Critical Characteristic, relating to Safety and/or Regulatory Compliance Significant Characteristic relating to Process Control (SPC) Control Dimension relating to Form - Fit - Function as defined by Cole Hersee Company and/or the Customer <p>(Note that the identification of any Characteristics as being "Special" does not alter the requirement that ALL specified dimensions & tolerances must be met.)</p>		<p>Cole Hersee Co. 20 Old Colony Ave., South Boston, MA, 02127 Phn: 617-268-2100 Web: www.colehersee.com</p>							
<p>Used On or Ref.: EX25669-A</p>		<p>Scale: 1:1</p>		<p>Drawn By: MJT</p>		<p>Date Drawn: 04/27/94</p>		<p>Responsible Engineer: JC</p>		<p>Pg. 1 of 1</p>			
<p>Description: SW, MASTER DISCONNECT</p>										<p>Drawing / Part No.: 75904-08</p>		<p>B</p>	