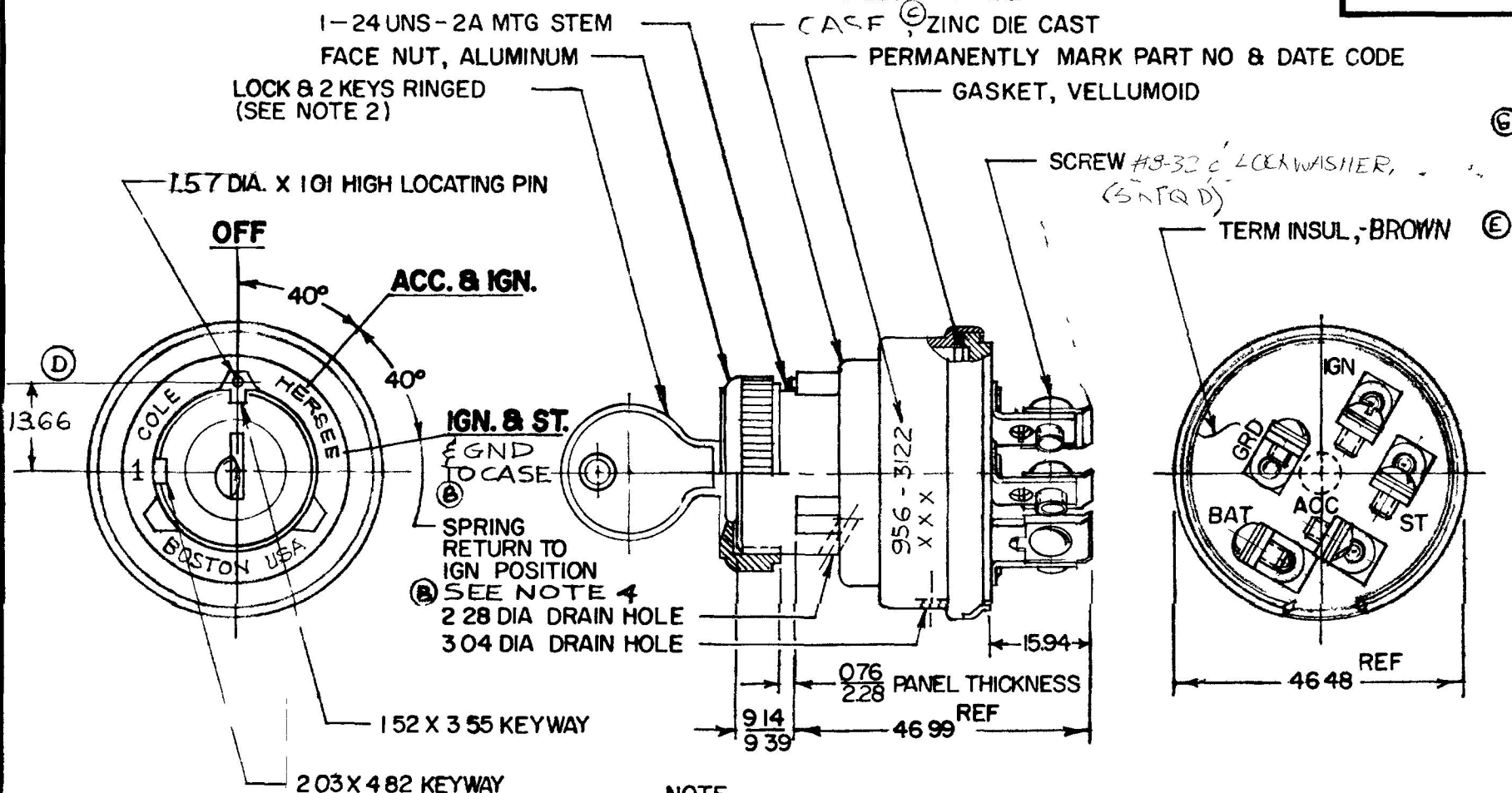


MM IN  
 .25 .010  
 .76 .030  
 1.01 .040  
 1.52 .060  
 1.65 .065  
 2.03 .080  
 2.28 .090  
 3.04 .120  
 3.55 .140  
 4.82 .190  
 9.14 .360  
 9.39 .370  
 15.74 .620  
 16.00 .630  
 46.48 1.830  
 46.99 1.850  
 1.57 .062  
 13.66 538

NPM 3-4-76  
 EX-16393C

# APPLICABLE SAE STANDARD OR RECOMMENDED PRACTICE SAE J259

956-3122



## NOTE

1. TERM INSUL GASKET SEALED
2. SHUTTER TYPE SEAL ON LOCK FACE
3. O-RING SEAL AT MTG STEM
4. START LOCK-OUT FEATURE, SWITCH MUST GO TO "OFF" POSITION BEFORE START CIRCUIT CAN BE RE-ENERGIZED
5. ALL STEEL PARTS PLATED

## METRIC

DO NOT SCALE

| LET | WAS          | DATE     | BY  | LET | WAS        | DATE     | BY  | MATERIAL     | DRAWN | CHECKED | APPR'D | SCALE | DATE DRAWN     |
|-----|--------------|----------|-----|-----|------------|----------|-----|--------------|-------|---------|--------|-------|----------------|
|     |              |          |     | E   | ECN 25189  | 8/13/92  | TJH | — # —        | EA    | 4-2-79  |        | 1:1   | 1-6-76         |
|     |              |          |     | D   | 1600/22457 | 6-5-84   | AK  | FINISH       |       |         |        |       | DATE BLUEPRINT |
|     |              |          |     | C   | HOUSING    | 8-17-88  | DB  | — # —        |       |         |        |       |                |
| G   | 2.71 8/22/92 | 8/22/92  | 1/1 | B   | NOTT 21267 | 12-22-80 | DB  | TOLERANCES   |       |         |        |       |                |
| F   | CAD ON 25239 | 12/22/92 | 1/1 | A   | REDRAWN    | 3-22-79  | FR  | DECIMAL ±    |       |         |        |       |                |
|     |              |          |     |     |            |          |     | METRIC ± .25 |       |         |        |       |                |

**CH** Cole Hersee Co.  
 20 OLD CO ONLY A ENUE SOUT BOSTON M. U.S. 27

3- POSITION  
**IGNITION & START SWITCH**

**956-3122**

CH 188(4 78)