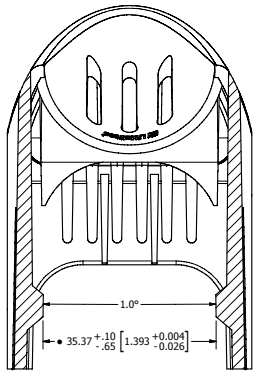
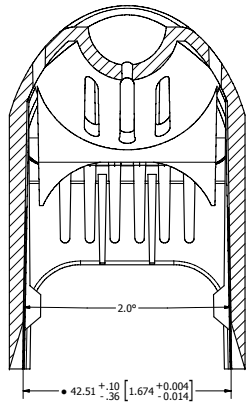


REVISION	
REV	DATE
A	04/20/2018
B	05/22/2018

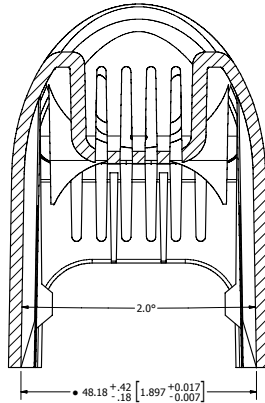
DESCRIPTION	
SAFETY: RELEASE PER DATA RELEASE INSTRUCTIONS	
SUBJECT: LITTELFUSE T400A FUSEBLOCK COVER	



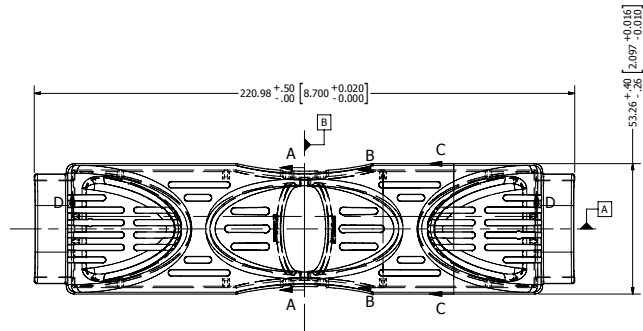
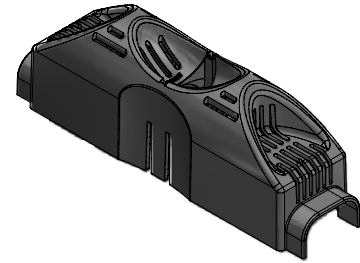
SECTION A-A  
SCALE 2 : 1



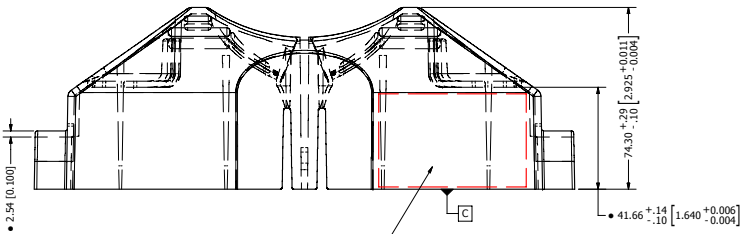
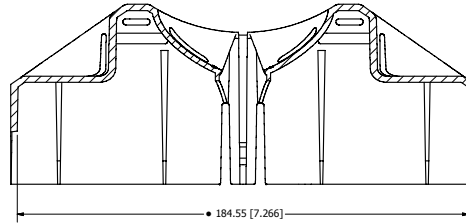
SECTION B-B  
SCALE 2 : 1



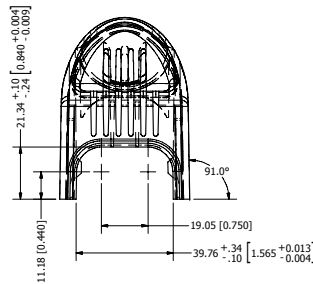
SECTION C-C  
SCALE 2 : 1



SECTION D-D  
SCALE 1 : 1



PRINT PRODUCT INFORMATION ON ONE  
SIDE OF PART, SEE GENERAL NOTE 1



#### GENERAL NOTES:

1. BODY PRINT PRODUCT INFORMATION IN WHITE ONE SIDE IN THE AREA INDICATED (SEE LS-000084)
2. PRINTING TO BE CLEAR, LEGIBLE, AND NOT SMEARED
3. INDIVIDUAL PACKAGING BOX MUST BE OF THE APPROPRIATE SIZE CORRESPONDING TO PART DIMENSIONS
4. APPLY BOX LABEL TO THE FRONT SIDE OF BOX (SEE LS-000065)

- NOTES:
1. TOOLING TO BE BUILT PER MATH DATA PROVIDED BY LITTELFUSE. GEOMETRY PER MATH TO BE WITHIN  $\pm 0.25 [0.010]$  UNLESS OTHERWISE SPECIFIED. DIMENSIONS SHOWN FOR INSPECTION PURPOSES ONLY.
  2. DRAFT ANGLES TO BE PER LITTELFUSE MATH DATA, UNLESS OTHERWISE SPECIFIED.
  3. PARTING LINES, KNOCKOUT PINS AND GATE LOCATION TO BE APPROVED BY LITTELFUSE ENGINEERING PRIOR TO TOOL CONSTRUCTION.
  4. PARTING LINES, KNOCKOUT PINS, AND LIFTER FLASH SHALL BE 0.13 MAX, UNLESS OTHERWISE SPECIFIED.
  5. CORNERS SHOWN SHARP MAY HAVE A 0.25 RADIUS MAX, UNLESS OTHERWISE SPECIFIED BY LITTELFUSE ENGINEERING.
  6. ALL CAVITIES SHALL BE IDENTIFIED. CHECK WITH LITTELFUSE ENGINEERING FOR PREFERRED LOCATION.
  7. PARTS TO BE CLEAN AND FREE OF CRACKS, FOREIGN MATTER, CHIPS, WELD OR FLOW LINES, SINK, DISCOLORATION, PIN HOLES, VOIDS, ROUGHNESS OR WARPAGE UNLESS ACCEPTED BY LITTELFUSE ENGINEERING.
  8. DIMENSIONS TO BE MEASURED AT LOCATION OF MAXIMUM DRAFT, UNLESS OTHER SPECIFIED BY LITTELFUSE ENGINEERING.
  9. PACKAGING CARTON CONTAINING THIS PART TO BE MARKED WITH PART NUMBER AND CURRENT REVISION.
  10. THE  $\Delta$  SYMBOL INDICATES THE DIMENSION NUMBER FOR INSPECTION PURPOSES.
  11. MAXIMUM REGROUND ALLOWED: 25%

● DENOTES CRITICAL CHARACTERISTICS.	
CPK	DENOTES CPK DIMENSIONS. MINIMUM CPK VALUE
Ⓢ	DENOTES A CHARACTERISTIC THAT PROVIDES AN INDICATION OF PROCESS PERFORMANCE. PROCEDURE FOR MEASUREMENT AND TRACKING TO BE DEFINED IN LITTELFUSE INSPECTION INSTRUCTIONS.
CP	DENOTES CP DIMENSIONS. MINIMUM CP VALUE MUST BE WITHIN THE DIMENSIONAL LIMITATIONS SHOWN ON DRAWING AND INITIALLY LOCATED TO ALLOW FOR MAXIMUM TOOL LIFE.
MATERIAL SPEC: UNLESS OTHERWISE SPECIFIED	FINISH: COLOR: BASIC BLACK BK3086
DRAW: CMM	SCALE: 1/2"=1" (1:2)
DATE: 04/20/2018	SCALE: 1/2"=1" (1:2)
UNLESS OTHERWISE SPECIFIED, DIMENSIONS ARE IN MILLIMETERS. DIMENSIONS IN BRACKETS ( ) ARE INCHES DIMENSIONING AND DO NOT INCLUDE PLATING TOLERANCING TO BE INTERPRETED IN ACCORDANCE WITH ANSI Y14.5M-2014.	FINISH: GOOD WTT
UNLESS OTHERWISE SPECIFIED, DIMENSIONS ARE IN MILLIMETERS. DIMENSIONS IN BRACKETS ( ) ARE INCHES DIMENSIONING AND DO NOT INCLUDE PLATING TOLERANCING TO BE INTERPRETED IN ACCORDANCE WITH ANSI Y14.5M-2014.	FINISH: GOOD WTT
TOLERANCE UNLESS OTHERWISE SPECIFIED: ONE PLACE DEC: $\pm 0.25 [0.01]$ FRACTION: $\pm 1/16 [0.0625]$ ANGULAR: $\pm 1^\circ$	FINISH: GOOD WTT
TITLE	600V CLASS T400A FUSEBLOCK COVER
Littelfuse A WORLD OF PROTECTION	REVISION: B DRAWING NO.: LT60400FB