

THIS DRAWING AND THE INFORMATION CONTAINED WITHIN IT ARE CONFIDENTIAL AND MAY NOT BE COPIED OR DISCLOSED WITHOUT THE WRITTEN PERMISSION OF LITTELFUSE.

REVISIONS

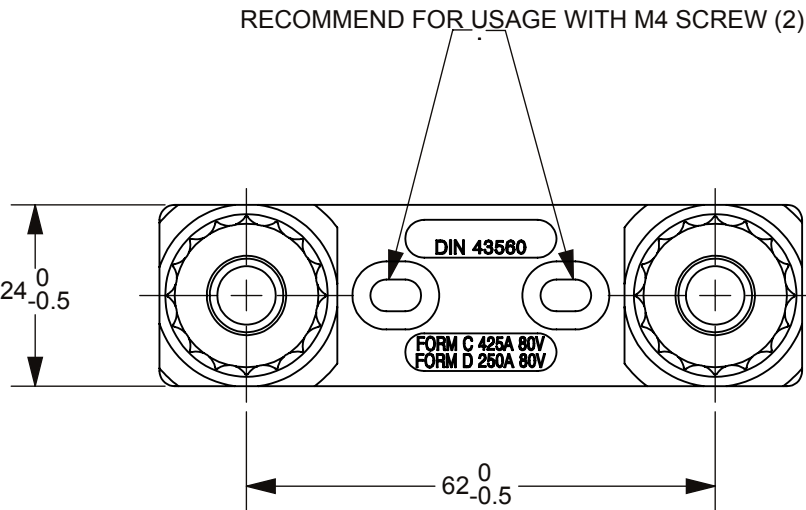
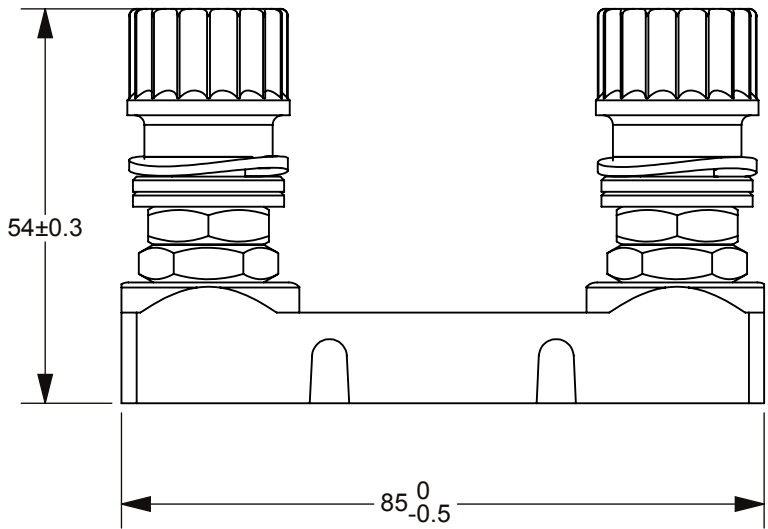
ZONE	REV.	DESCRIPTION	DATE	APPROVED
	A	PER GCF # 518627 NEW RELEASE	12/07/2017	A.HOANG

D

C

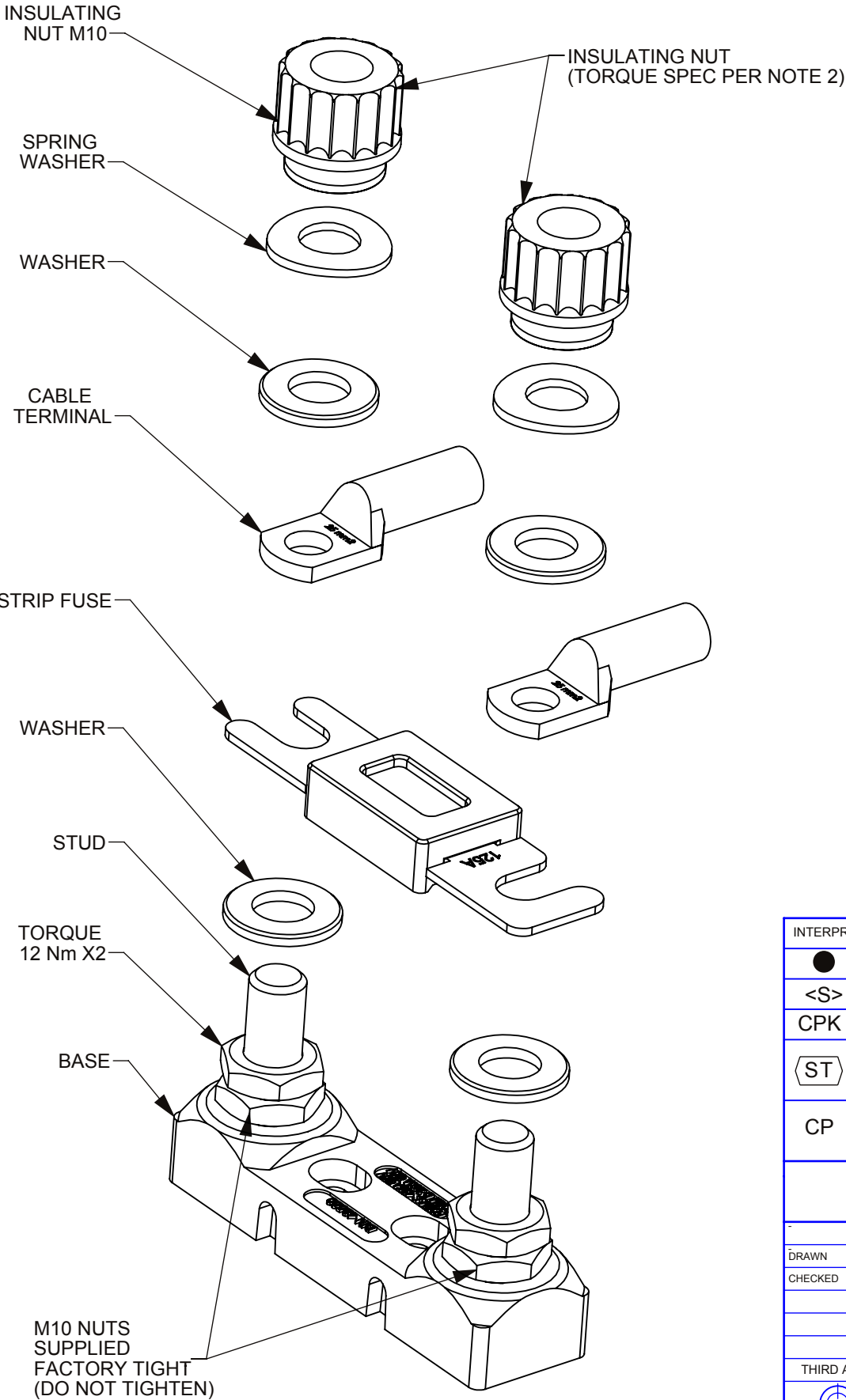
B




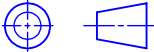
A



NOTES:

- THE M4 SCREWS WHEN ASSEMBLING THE FUSE HOLDER TO VEHICLES SHOULD BE FROM 1.1 Nm TO 5Nm (MAXIMUM) PER ISO 898,PER BOLT STRENGTH MARKINGS.
- THE MAXIMUM TORQUE OF THE FUSE-STRIP ON FUSE- HOLDER AMOUNTS TO:  
35A UP TO 63A: MAX. 5Nm  
80A UP TO 100A: MAX. 8Nm  
FROM 125A: MAX. 10Nm
- THESE TORQUES APPLY ONLY UNDER THE PREREQUISITE THAT BOTH THE FUSE-STRIP, AND THE CABLE TERMIALS ARE SECURED AGAINST ROTATION.THE FUSE-STRIP SHOULD INDICATE AFTERWARDS NO VISIBLE DEFORMATIONS.
- THE INDICATED VALUES WERE TAKEN UP WITH A TORQUE KEY WITH DRAGGING POINTER.
- WHEN USING OTHER ASSEMBLY METHODS. THE TORQUE IS TO BE REDUCED IF NECESSARY, SO THAT NOT TO DEFORM THE FUSE-STRIP.
- FOR ASSEMBLY DETAIL REFER TO INSTALLATION INSTRUCTION BULLETIN.



INTERPRET DRAWING TO ANSI/ASME Y14.5-1994.				
	FIT/ FUNCTION CRITICAL CHARACTERISTICS SYMBOL			
<S>	SAFETY/ COMPLIANCE CRITICAL CHARACTERISTICS SYMBOL			
CPK	DENOTES CPK DIMENSIONS MINIMUM CPK VALUE			
	DENOTES A CHARACTERISTIC THAT PROVIDES AN INDICATION OF PROCESS PERFORMANCE.PROCEDURE FOR MEASUREMENTAND TRACKINGTO BE DEFINED IN LITTELFUSE INSPECTION INSTRUCTIONS			
CP	DENOTES CP DIMENSIONS, -MINIMUM CP VALUE MUST BE WITHIN THE DIMENSIONAL LIMITATIONS SHOWN ON DRAWING AND INITIALLY LOCATED TO ALLOW FOR MAXIMUM TOOL LIFE			
DIMENSION MM; TOLERANCES UNLESS OTHERWISE SPECIFIED ONE PLACE DECIMAL ± 0.5      THREE PLACES DECIMAL ± 0.100 TWO PLACES DECIMAL ± 0.20      ANGULAR ± 2°				
NAME	DATE	 <b>Littelfuse®</b> Expertise Applied   Answers Delivered		
DRAWN C.MILLER	12/06/17			
CHECKED A.HOANG	12/08/17			
-	-			
-	-			
THIRD ANGLE PROJECTION		TITLE  HOLDER FOR STRIP FUSE		
				
DO NOT SCALE DRAWING		SIZE B	DWG. NO. OL 177.5701.0001	REV. A
SCALE 1:1			SHEET 1 OF 1	