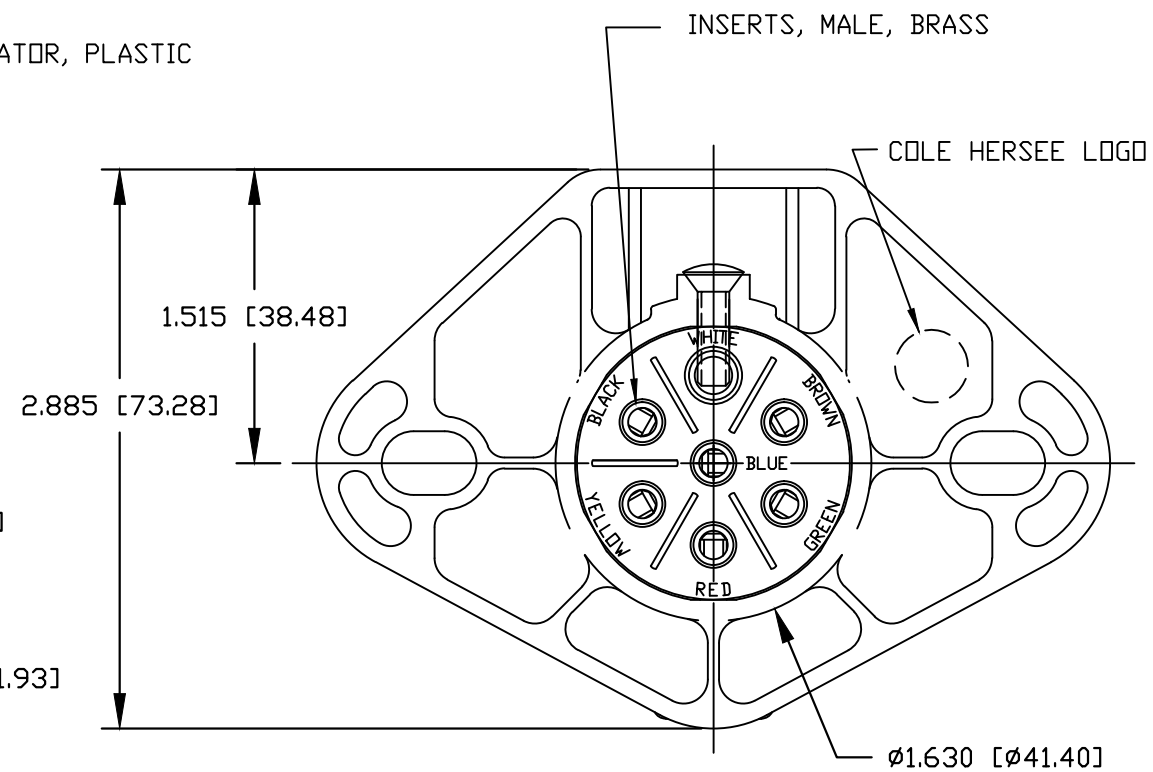
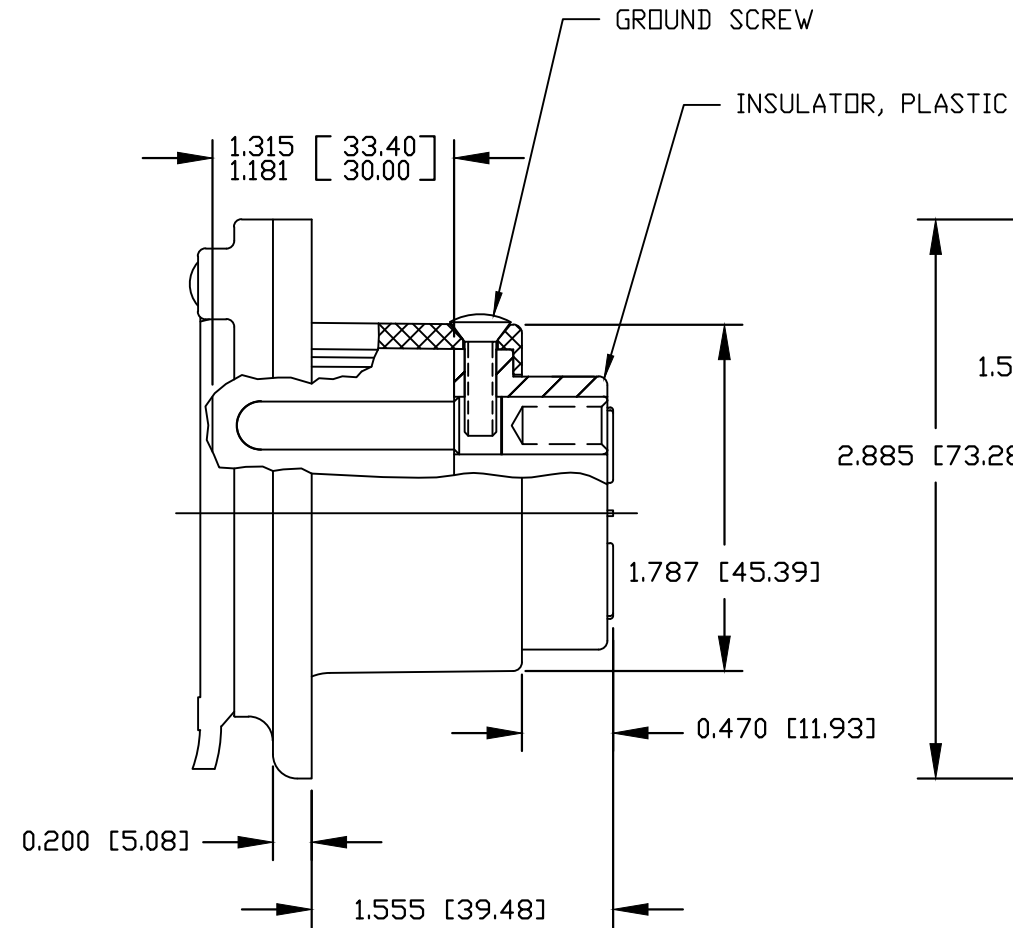
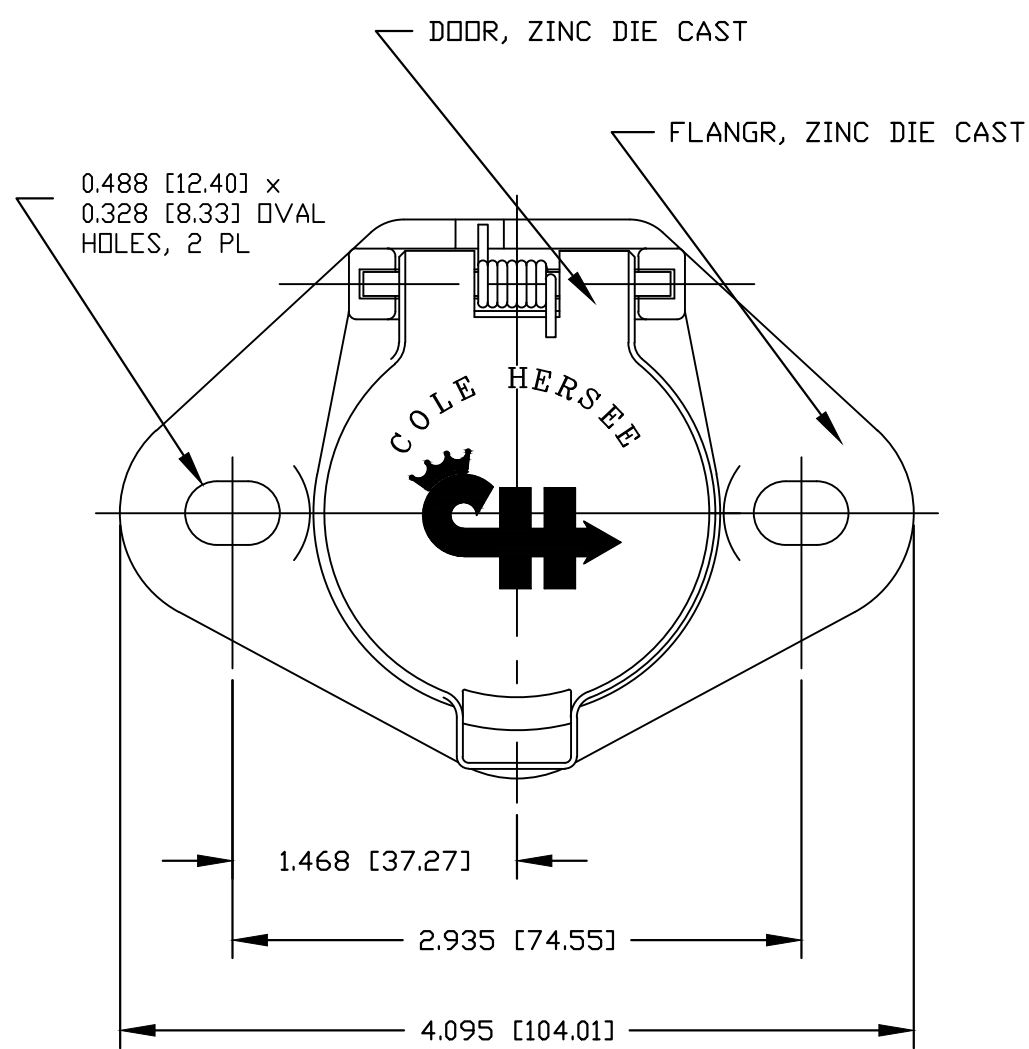






Revision Control Record			
Rev.	Description of Change	ECN No.	Date
A	RELEASED DRAWING	515397	01/13/16



- NOTES:
1. ALL DIMENSIONS ARE REFERENCE
  2. INSERTS WILL ACCEPT UP TO #8 GA [8.0mm ] WIRE LEAD AT GROUND TERMINAL AND #10 GA [5.0mm ]<sup>2</sup> WIRE LEADS AT OTHER TERMINALS
  3. SELF GROUNDED
  4. SPLIT PIN TYPE
  5. SCREWS SHIP BULK

<b>Tolerances</b> Unless otherwise specifically noted, the following are default tolerances; * 2-place Decimal Dimensions +/- .02" * 3-place Decimal Dimensions +/- .005" * Angular Dimensions +/- 1.0 Deg. * Metric: Refer to equivalent English Dimension Tolerance >>> NOTE: All tolerances are Non-Cumulative. <<<  <b>Dimensional Units</b> All dimensions are expressed in inches except those shown in brackets (xxx) are expressed in millimeters  "REF." or an Asterisk (*) = Non-Toleranced Reference Dimension, shown for clarification purposes only.		<b>PROPRIETARY INFORMATION</b> This Engineering Drawing, and the information contained herein, is proprietary to Cole Hersee Company and may not be disclosed, re-produced, or in any other way transferred or communicated to any other party without the express written consent of an authorized representative of Cole Hersee Company.  <b>DESIGN CONTROL</b> It is the responsibility of the individual using / referencing this drawing to assure that the noted design revision level agrees with the revision level of the Controlled Document (Master Drawing). This is a NON-CONTROLLED DOCUMENT unless otherwise specifically noted.  <b>DO NOT SCALE</b> - Dimensional variation may occur during printing / reproduction.		<b>Special Characteristics:</b>  <div> Critical Characteristic, relating to Safety and/or Regulatory Compliance</div> <div> Significant Characteristic relating to Process Control (SPC)</div> <div> Control Dimension relating to Form - Fit - Function as defined by Cole Hersee Company and/or the Customer</div> (Note that the identification of any Characteristics as being "Special" does not alter the requirement that ALL specified dimensions & tolerances must be met.)		<div><b>Cole Hersee Co.</b> 20 Old Colony Ave., South Boston, MA, 02127 Phn: 617-268-2100 Web: www.colehersee.com</div> <b>Description:</b> <b>7 WAY FLANGE CONN</b>	
Used On or Ref.:	Scale: <b>1:1</b>	Drawn By: <b>BW</b>	Date Drawn: <b>5/15/73</b>	Responsible Engineer: <b>CM</b>	Pg. 1 of 1	Drawing / Part No.: <b>12063-11</b>	Current Rev.: <b>A</b>