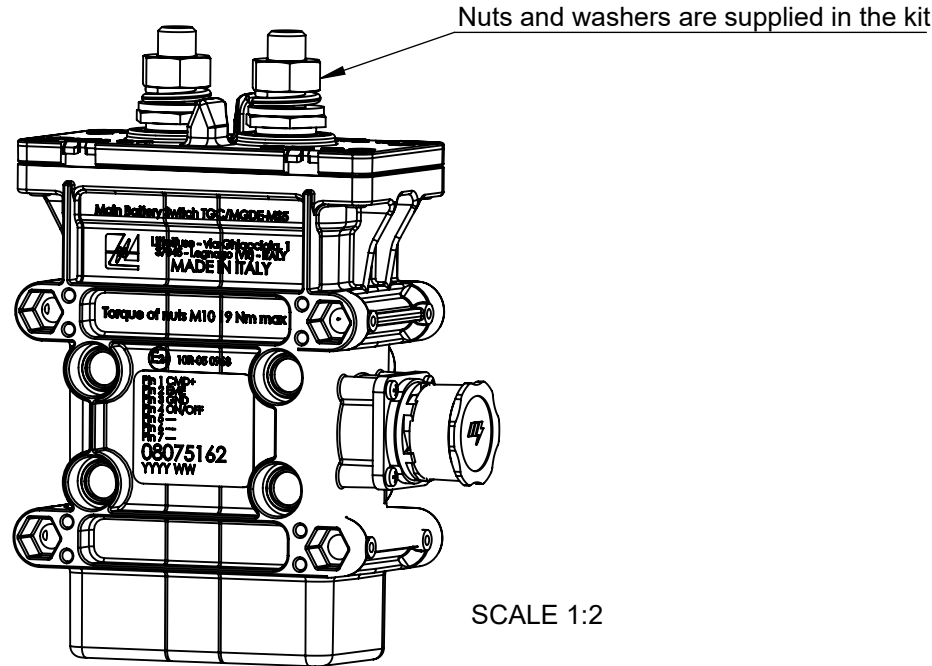
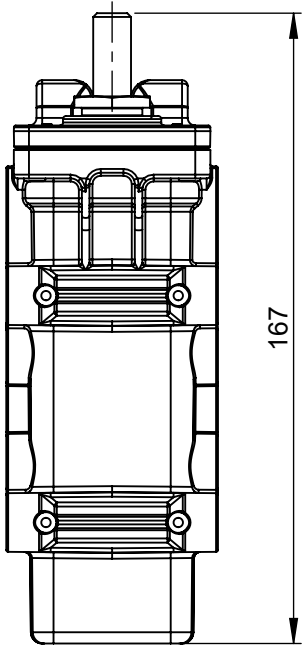
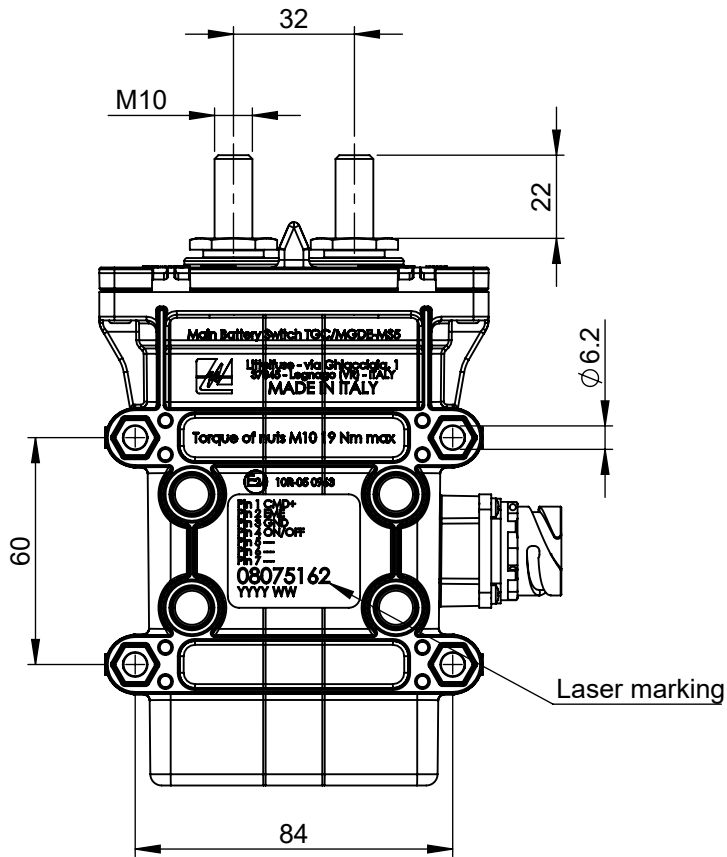
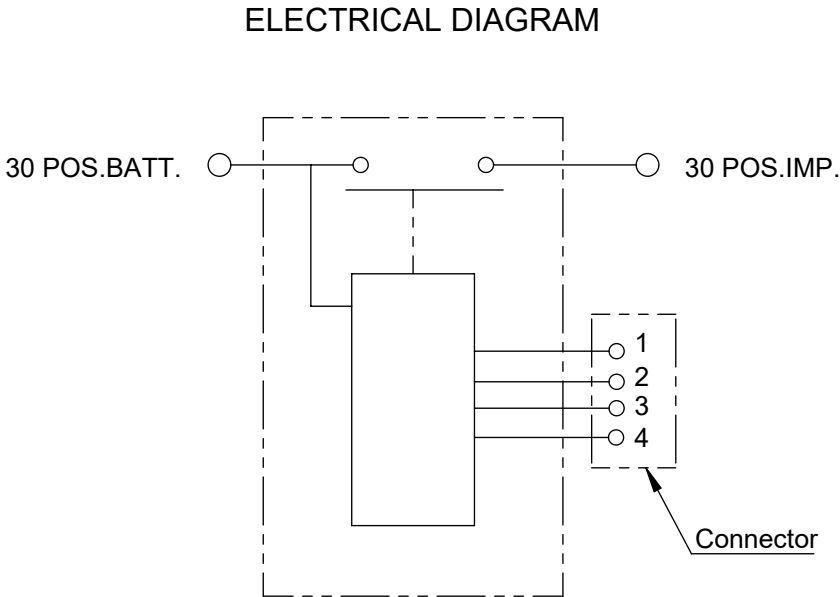
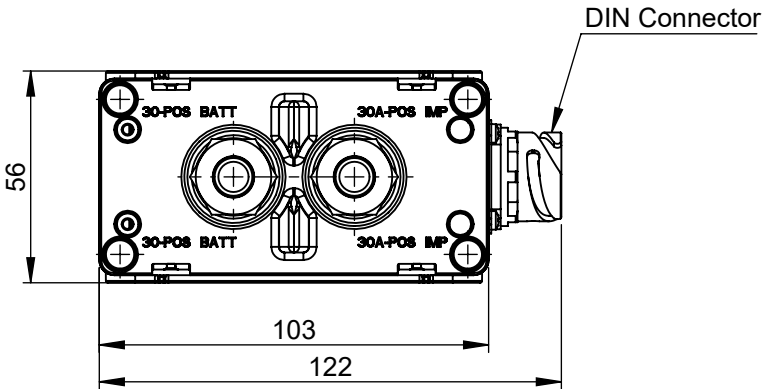





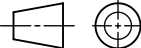
REVISIONS					
REV.	DESCRIPTION	DATE	GCF / ECR	DESIGNED	APPROVED
A	Initial release	13-Jul-22		L.Dal Molin	M.Tinto



- PRESCRIPTIONS**
- Torque of screw M10= 19 Nm max
 - Fix the device with M6 screw and with torque of 6±2 Nm

- CHARACTERISTICS**
- Nominal working tension: 28.5V
 - Nominal working current: 10A
 - Nominal working current main contact: 250A
 - Nominal max current main contact: 2000A for 5 sec.



DIMENSIONS AND TOLERANCES IN MILLIMETERS, DEFINED ACCORDING TO ISO 1101-2017.								
linear dimensions								
0,5 3	>3 6	>6 30	>30 120	>120 400	>400 1000	>1000 2000		
±0,2	±0,3	±0,5	±0,8	±1,2	±2	±3		
angle (for range of lengths)								
up to 10		>10 50	>50 120		>120 400			
±1°30'		±1°	±0°30'		±0°15'			
	FIT/ FUNCTION CRITICAL CHARACTERISTICS SYMBOL							
<S>	SAFETY/ COMPLIANCE CRITICAL CHARACTERISTICS SYMBOL							
CPK	DENOTES CPK DIMENSIONS MINIMUM CPK VALUE							
	DENOTES A CHARACTERISTIC THAT PROVIDES AN INDICATION OF PROCESS PERFORMANCE.PROCEDURE FOR MEASUREMENTAND TRACKINGTO BE DEFINED IN LITTELFUSE INSPECTION INSTRUCTIONS							
CP	DENOTES CP DIMENSIONS, -MINIMUM CP VALUE MUST BE WITHIN THE DIMENSIONAL LIMITATIONS SHOWN ON DRAWING AND INITIALLY LOCATED TO ALLOW FOR MAXIMUM TOOL LIFE							
NAME		DATE		 Littelfuse® Expertise Applied Answers Delivered				
DRAWN		L. Dal Molin					08-May-19	
CHECKED		-					-	
		-					-	
						TITLE		
FORM NO: CVP-PE40-0013 REV A				TGC/MG-MS5 T 3' KIT ISUZU				
FIRST ANGLE PROJECTION								
				SIZE: A3		DWG. NO. OL-08075162		
DO NOT SCALE DRAWING				SCALE 1:2		OUTLINE REV. A		
						SHEET 1 OF 1		