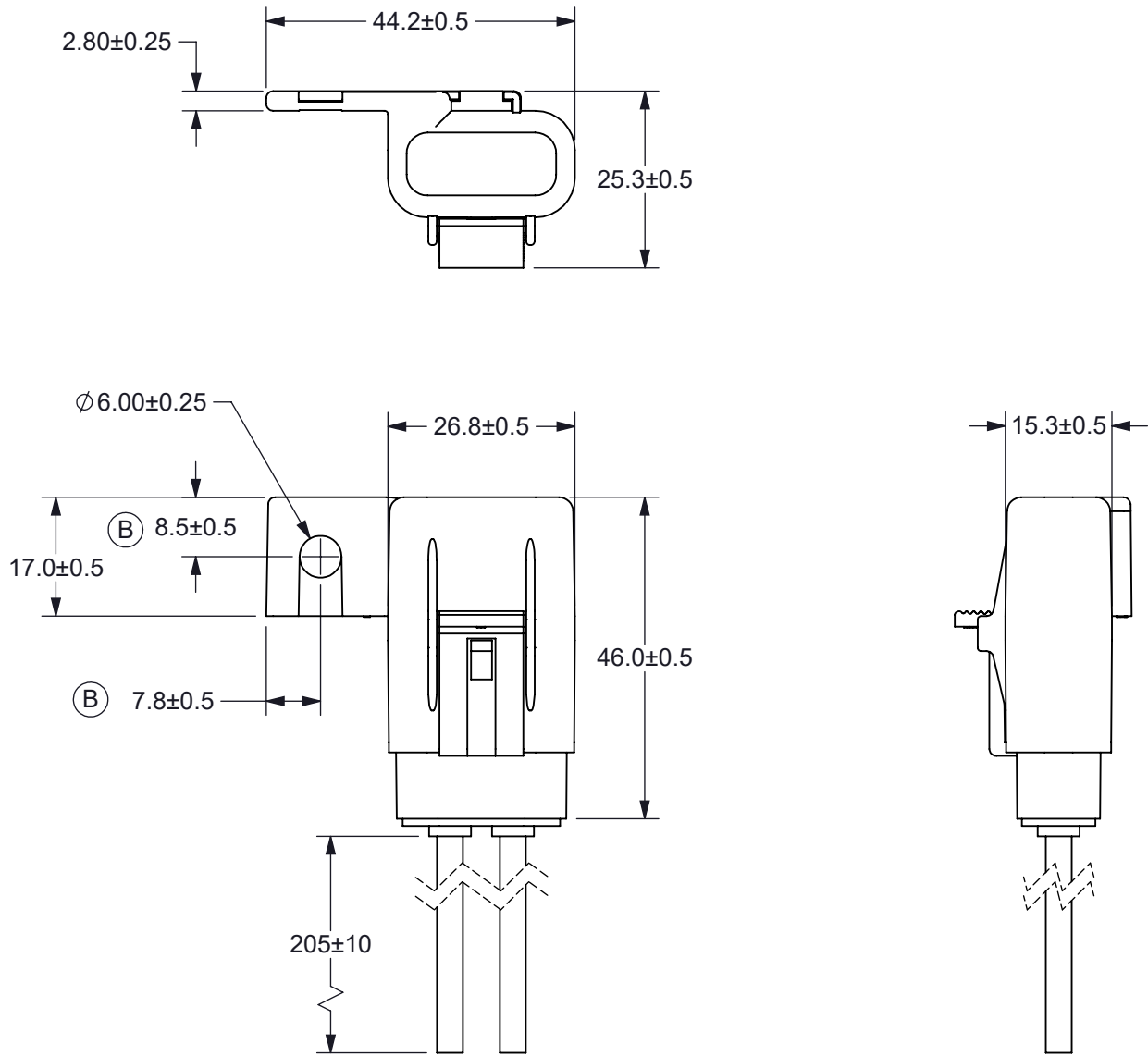
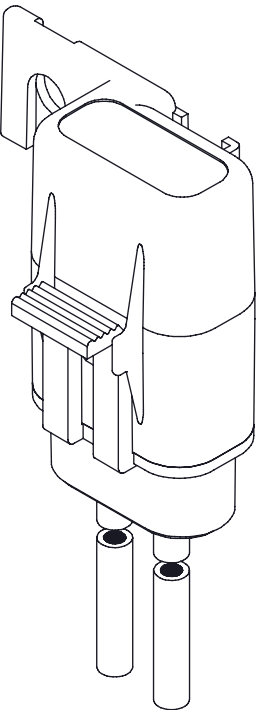
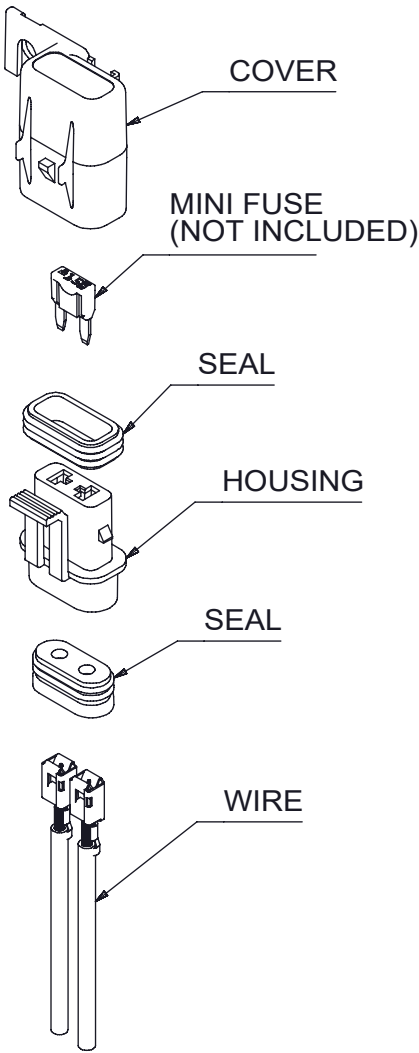


THIS DRAWING AND THE INFORMATION CONTAINED WITHIN IT ARE CONFIDENTIAL AND MAY NOT BE COPIED OR DISCLOSED WITHOUT THE WRITTEN PERMISSION OF LITTELFUSE.




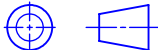
REVISIONS				
REV.	CHANGE NO.	DESCRIPTION	DATE	APPROVED
A	520748	PRODUCTION RELEASE	05/29/2019	DGK
B	521389	ADDED TIN TO WIRE. ADDED HOLE DIMENSIONS.	10/16/2019	DGK



(B)



- NOTES:
- HOUSING AND COVER MATERIAL: BLACK PC
 - SEAL MATERIAL: SILICONE
 - WIRE: 12 AWG STRANDED COPPER, RED GXL WIRE, 125°C TEMPERATURE RATING, TINNED
 - FOR USE WITH ISO 8820 TYPE 'F' FUSE (MINI FUSE).
 - RATING: 30A MAXIMUM, 32Vdc
 - FUSEHOLDER IS DUST TIGHT AND PROTECTED AGAINST IMMERSION, IP67 RATED.
 - FUSE IS NOT INCLUDED.
 - FUSEHOLDER IS RoHS COMPLIANT.

INTERPRET DRAWING TO ANSI/ASME Y14.5-1994.					
	FIT/ FUNCTION CRITICAL CHARACTERISTICS SYMBOL				
<S>	SAFETY/ COMPLIANCE CRITICAL CHARACTERISTICS SYMBOL				
CPK	DENOTES CPK DIMENSIONS MINIMUM CPK VALUE				
	DENOTES A CHARACTERISTIC THAT PROVIDES AN INDICATION OF PROCESS PERFORMANCE.PROCEDURE FOR MEASUREMENTAND TRACKINGTO BE DEFINED IN LITTELFUSE INSPECTION INSTRUCTIONS				
CP	DENOTES CP DIMENSIONS, -MINIMUM CP VALUE MUST BE WITHIN THE DIMENSIONAL LIMITATIONS SHOWN ON DRAWING AND INITIALLY LOCATED TO ALLOW FOR MAXIMUM TOOL LIFE				
DIMENSION: MM TOLERANCES UNLESS OTHERWISE SPECIFIED ONE PLACE DECIMAL ± 0.5 THREE PLACES DECIMAL ± 0.100 TWO PLACES DECIMAL ± 0.20 ANGULAR ± 2°					
	NAME	DATE	 Littelfuse® Expertise Applied Answers Delivered		
DRAWN	DGK	05/29/2019			
CHECKED	MS	06/26/2019			
	-	-			
	-	-			
FORM NO: CVP-PE40-0004 REV A			TITLE FUSEHOLDER, IN-LINE MINI 12 AWG GXL, SEALED		
THIRD ANGLE PROJECTION					
					
DO NOT SCALE DRAWING			SIZE B	DWG. NO. OL-FHMS200	REV. B
SCALE 1:2			SHEET 1 OF 1		