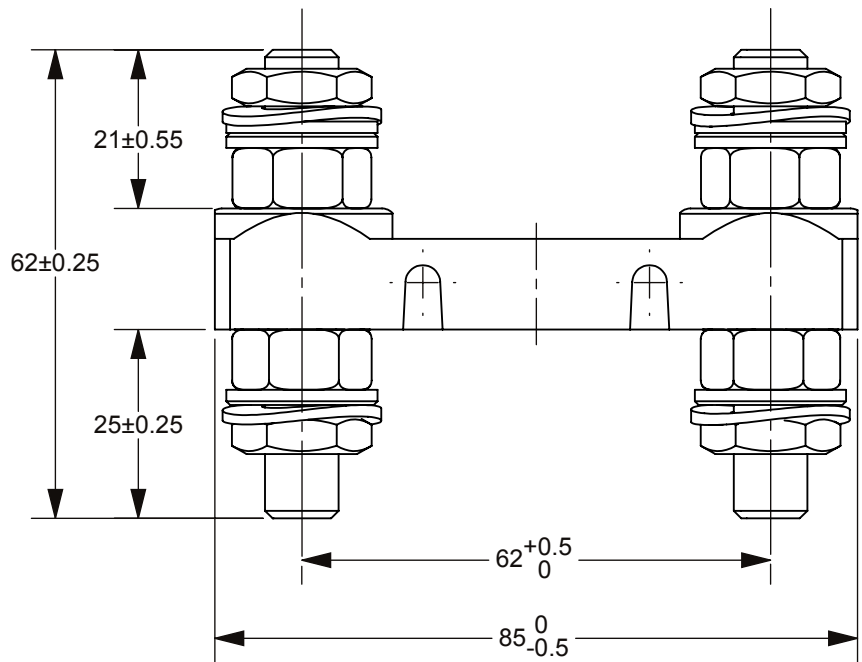
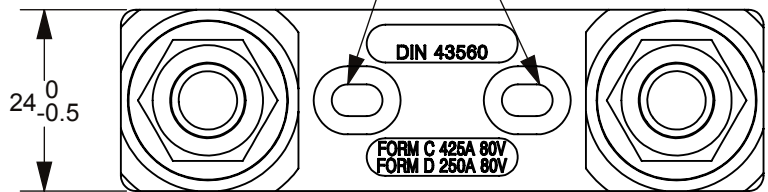


THIS DRAWING AND THE INFORMATION CONTAINED WITHIN IT ARE CONFIDENTIAL AND MAY NOT BE COPIED OR DISCLOSED WITHOUT THE WRITTEN PERMISSION OF LITTELFUSE.

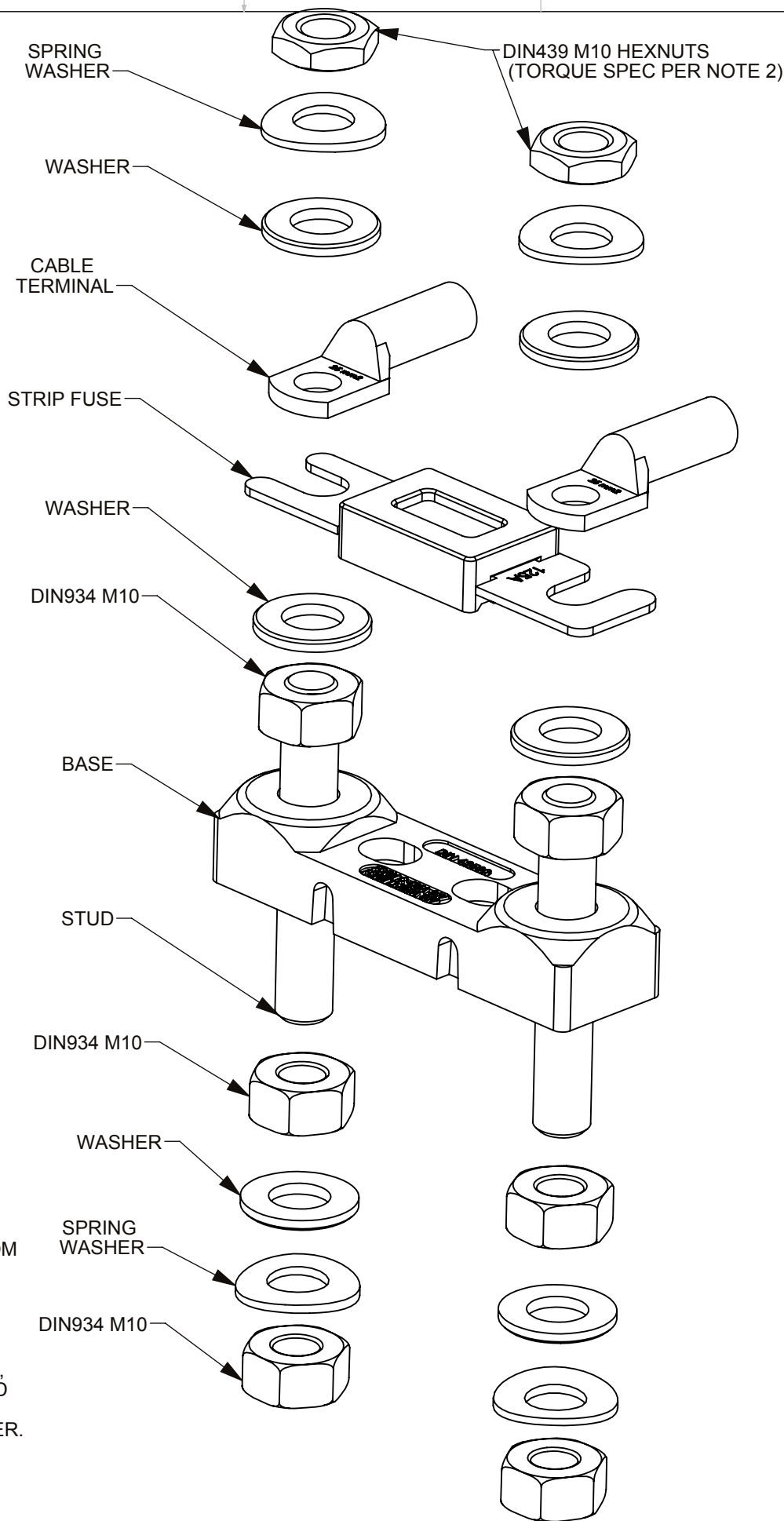


RECOMMEND FOR USAGE WITH M4 SCREW (2)



NOTES:

- THE M4 SCREWS WHEN ASSEMBLING THE FUSE HOLDER TO VEHICLES SHOULD BE FROM 1.1 Nm TO 5Nm (MAXIMUM) PER ISO 898,PER BOLT STRENGTH MARKINGS.
- THE MAXIMUM TORQUE OF THE FUSE-STRIP ON FUSE- HOLDER AMOUNTS TO:
35A UP TO 63A: MAX. 5Nm
80A UP TO 100A: MAX. 8Nm
FROM 125A: MAX. 10Nm
- THESE TORQUES APPLY ONLY UNDER THE PREREQUISITE THAT BOTH THE FUSE-STRIP, AND THE CABLE TERMIALS ARE SECURED AGAINST ROTATION.THE FUSE-STRIP SHOULD INDICATE AFTERWARDS NO VISIBLE DEFORMATIONS.
- THE INDICATED VALUES WERE TAKEN UP WITH A TORQUE KEY WITH DRAGGING POINTER.
- WHEN USING OTHER ASSEMBLY METHODS. THE TORQUE IS TO BE REDUCED IF NECESSARY, SO THAT NOT TO DEFORM THE FUSE-STRIP.
- FOR ASSEMBLY DETAIL REFER TO INSTALLATION INSTRUCTION BULLETIN.



REVISIONS

ZONE	REV.	DESCRIPTION	DATE	APPROVED
	A	PER GCF # 518627 NEW RELEASE	12/4/2017	A.HOANG

INTERPRET DRAWING TO ANSI/ASME Y14.5-1994.

	FIT/ FUNCTION CRITICAL CHARACTERISTICS SYMBOL
	SAFETY/ COMPLIANCE CRITICAL CHARACTERISTICS SYMBOL
CPK	DENOTES CPK DIMENSIONS MINIMUM CPK VALUE
	DENOTES A CHARACTERISTIC THAT PROVIDES AN INDICATION OF PROCESS PERFORMANCE.PROCEDURE FOR MEASUREMENTAND TRACKINGTO BE DEFINED IN LITTELFUSE INSPECTION INSTRUCTIONS
CP	DENOTES CP DIMENSIONS, -MINIMUM CP VALUE MUST BE WITHIN THE DIMENSIONAL LIMITATIONS SHOWN ON DRAWING AND INITIALLY LOCATED TO ALLOW FOR MAXIMUM TOOL LIFE

DIMENSION MM: TOLERANCES UNLESS OTHERWISE SPECIFIED
ONE PLACE DECIMAL ± 0.5 THREE PLACES DECIMAL ± 0.100
TWO PLACES DECIMAL ± 0.20 ANGULAR ± 2°

	NAME	DATE	<div><div>Littelfuse®</div><div>Expertise Applied Answers Delivered</div></div>		
DRAWN	C.MILLER	12/08/17			
CHECKED	A.HOANG	12/08/17			
	-	-			
	-	-	TITLE HOLDER FOR FUSE STRIP		
	-	-			
	-	-			
THIRD ANGLE PROJECTION			<div><div>SIZE B</div><div>DWG. NO. OL 177.5741.0001</div><div>REV. A</div></div>		
<div></div>					
DO NOT SCALE DRAWING			SCALE 1:1		SHEET 1 OF 1