

1"-11 1/2 NPSM  
CONDUIT LOCKNUT  
(POINTS TOWARD FLANGE)

(F) INSULATOR, BLACK

STUD 3/8-16  
BOTH ENDS

WASHER

LOCKWASHER, 2 PL

HEX NUT, 2 PL

Ø0.875 [22.23]

1.312 [33.32]

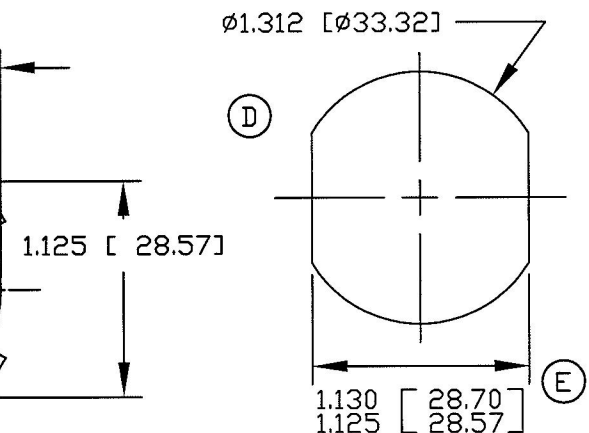
0.220 [5.58]

0.625 [15.87]

1.195 [30.35]

2.817 [71.55]

Ø1.562 [39.69]



TYPICAL PANEL CUTOUT

(D) NOTES:

1. ALL STEEL PARTS PLATED
2. ALL DIMENSIONS ARE REFERENCE ONLY
3. MOUNTING THREADS 1"-11 1/2 NPSM-  
MOUNTING TORQUE 10.8-13.5 Nm  
(8-10 FT LBS) NOT TO EXCEED  
13.5 Nm (10 FT LBS)
4. STUD 3/8-16 TIGHTENING TORQUE  
8.1-10.8 Nm (6-8 FT LBS)

# Revision Control Record

| Rev. | Description of Change | ECN No. | Date     |
|------|-----------------------|---------|----------|
| D    | NOTES & VIEW          | 03189   | 6/02/03  |
| E    | DIMENSIONS            | 03733   | 12/23/03 |
| F    | ADDED BLACK           | 12085   | 03/16/12 |

**Tolerances** Unless otherwise specifically noted, the following are default tolerances;

\* 2-place Decimal Dimensions +/- .02"

\* 3-place Decimal Dimensions +/- .005"

\* Angular Dimensions +/- 1.0 Deg.

\* Metric: Refer to equivalent English Dimension Tolerance

>>> NOTE: All tolerances are Non-Cumulative. <<<

**Dimensional Units** All dimensions are expressed in inches except those shown in brackets (xxx) are expressed in millimeters

"REF." or an Asterisk (\*) = Non-Toleranced Reference Dimension, shown for clarification purposes only.

**PROPRIETARY INFORMATION** This Engineering Drawing, and the information contained herein, is proprietary to Cole Hersee Company and may not be disclosed, re-produced, or in any other way transferred or communicated to any other party without the express written consent of an authorized representative of Cole Hersee Company.

**DESIGN CONTROL** It is the responsibility of the individual using / referencing this drawing to assure that the noted design revision level agrees with the revision level of the Controlled Document (Master Drawing). This is a NON-CONTROLLED DOCUMENT unless otherwise specifically noted.

DO NOT SCALE - Dimensional variation may occur during printing / reproduction.

## Special Characteristics:



Critical Characteristic, relating to Safety and/or Regulatory Compliance



Significant Characteristic relating to Process Control (SPC)



Key Characteristic relating to Form - Fit - Function as defined by Cole Hersee Company and/or the Customer

(Note that the identification of any Characteristics as being "Special" does not alter the requirement that ALL specified dimensions & tolerances must be met.)



**Cole Hersee Co.**

20 Old Colony Ave., South Boston, MA, 02127  
Phn: 617-268-2100 Web: [www.colehersee.com](http://www.colehersee.com)

Description: **FEED THRU STUD**

Drawing /  
Part No.:

**46211-04**

Current Rev.

**F**

Used On  
or Ref.: **EX20247**

Scale: **1:1**

Drawn  
By: **DPS**

Date  
Drawn: **10/25/83**

Responsible  
Engineer: **SAM**

Pg. 1 of 1