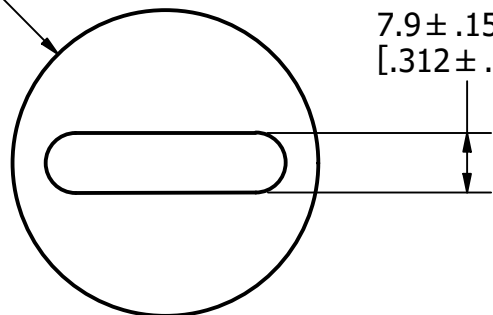


Ø40.5
[Ø1.593]

7.9 ± .15
[.312 ± .006]



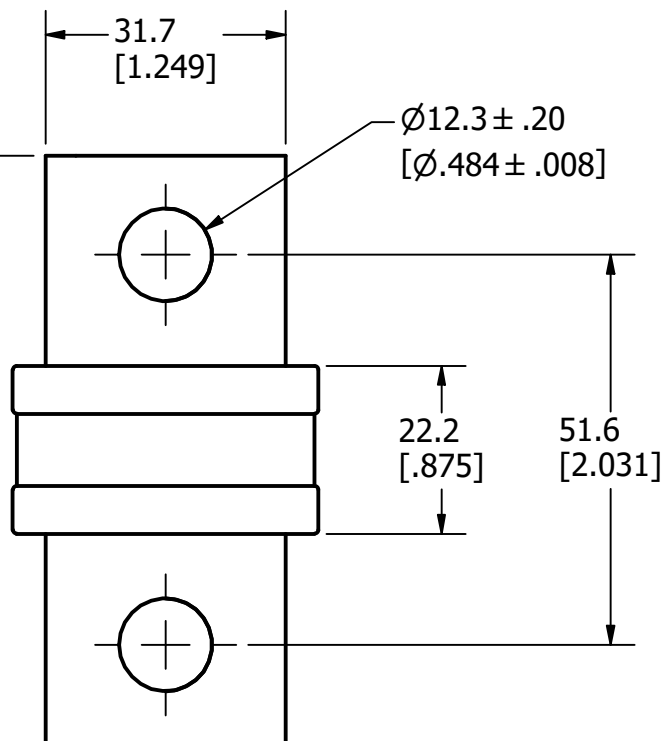
31.7
[1.249]

Ø12.3 ± .20
[Ø.484 ± .008]

77.8 ± 1.02
[3.062 ± .040]

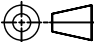

22.2
[.875]

51.6
[2.031]



REVISION		
REV	DATE	DESCRIPTION
A	8/10/22	525528GCP - RELEASE MRY

APPROXIMATE SHIPPING WEIGHT: 1 FUSE / 0.43 LBS.

1					
NO	COMPONENT NO	DESCRIPTION		QTY/M	U/M
BILL OF MATERIAL					
<S>	CRITICAL CHARACTERISTIC FOR PART SAFETY/COMPLIANCE				
●	DENOTES CRITICAL CHARACTERISTICS.				
CPK	DENOTES CPK DIMENSIONS, -MINIMUM CPK VALUE				
ST	DENOTES A CHARACTERISTIC THAT PROVIDES AN INDICATION OF PROCESS PERFORMANCE. PROCEDURE FOR MEASUREMENT AND TRACKING TO BE DEFINED IN LITTELFUSE INSPECTION INSTRUCTIONS.				
CP	DENOTES CP DIMENSIONS, -MINIMUM CP VALUE MUST BE WITHIN THE DIMENSIONAL LIMITATIONS SHOWN ON DRAWING AND INITIALLY LOCATED TO ALLOW FOR MAXIMUM TOOL LIFE.				
MATL SPEC			FINISH		
DRW JMoler	DATE 8/2/2022		SCALE NTS	FINISH GOOD WT GRAMS/PIECE	
UNLESS OTHERWISE SPECIFIED, DIMENSIONS ARE IN MILLIMETERS, DIMENSIONS IN BRACKETS [] ARE INCHES DIMENSIONING AND DO NOT INCLUDE PLATING. TOLERANCING TO BE INTERPRETED IN ACCORDANCE WITH ANSI Y14.5M-1994					
3RD ANGLE PROJECTION 					
TITLE JLLN 450-600A OUTLINE					
 Littelfuse® CHICAGO, ILLINOIS 60631			REVISION A	DRWG NO. OL-JLLN600	SHEET 1 OF 1