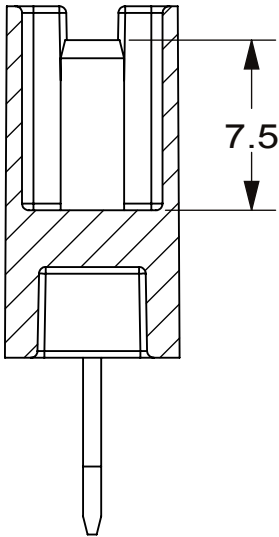
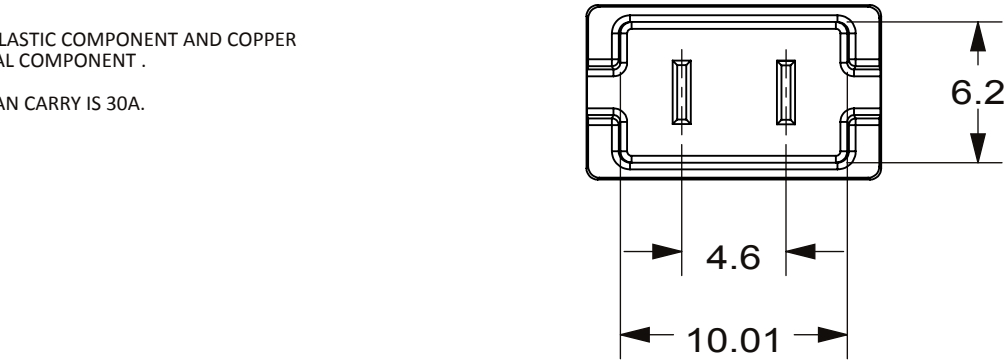


THIS DRAWING AND THE INFORMATION CONTAINED WITHIN IT ARE CONFIDENTIAL AND MAY NOT BE COPIED OR DISCLOSED WITHOUT THE WRITTEN PERMISSION OF LITTELFUSE.

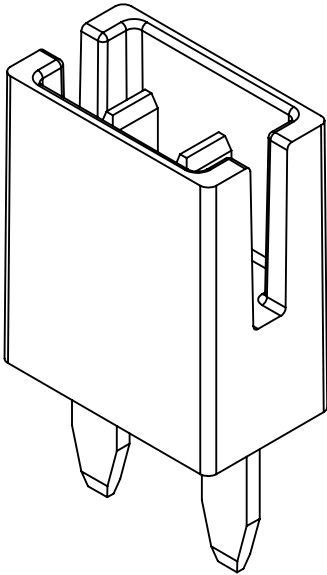
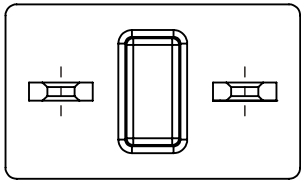
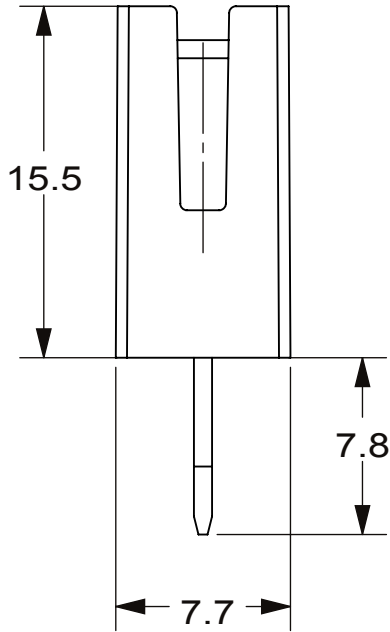
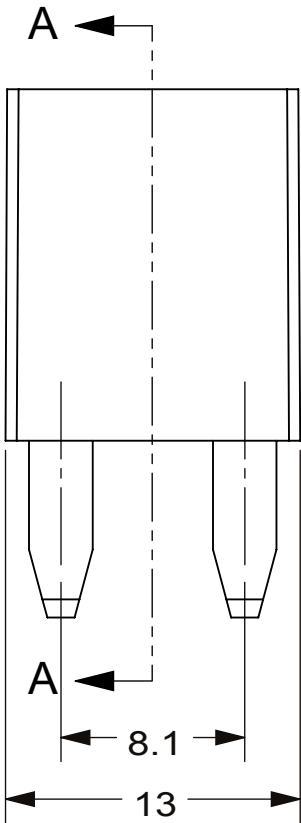
NOTES: (UNLESS OTHERWISE SPECIFIED)
1. DESCRIPTION:
1.1. ASSOCIATED 3D CAD FILE DEFINES ALL NON-DIMENSIONED FEATURES.

2. MATERIAL:
2.1. MATERIAL SHALL BE PA66+GF30% FOR PLASTIC COMPONENT AND COPPER C2100 FULL HARD WITH COATING FOR METAL COMPONENT .


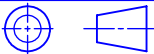
3. THE MAX CONTINOUS CURRENT WHICH CAN CARRY IS 30A.



SECTION A-A



REVISIONS				
ZONE	REV.	DESCRIPTION	DATE	APPROVED
	A	PER EC # 520273 : INITIAL RELEASE	12/19/2018	D.CHENG

DIMENSIONS ARE SHOWN IN MILLIMETERS. DIMENSIONS AND TOLERANCES ARE DEFINED ACCORDING TO ANSI/ASME Y14.5-1994.						
●	DENOTES PRODUCTS CRITICAL CHARACTERISTICS					
CPK	DENOTES CPK DIMENSIONS MINIMUM CPK VALUE					
ST	DENOTES A CHARACTERISTIC THAT PROVIDES AN INDICATION OF PROCESS PERFORMANCE.PROCEDURE FOR MEASUREMENDAND TRACKINGTO BE DEFINED IN LITTELFUSE INSPECTION INSTRUCTIONS					
CP	DENOTES CP DIMENSIONS, -MINIMUM CP VALUE MUST BE WITHIN THE DIMENSIONAL LIMITATIONS SHOWN ON DRAWING AND INITIALLY LOCATED TO ALLOW FOR MAXIMUM TOOL LIFE					
TOLERANCES UNLESS OTHERWISE SPECIFIED (REF.ISO2768-M)						
DIMENSION	UP TO 0.5 - 3	OVER 3 - 6	UP TO 6 - 30	OVER 30 - 120	UP TO 120 - 400	OVER 400
ANGLE						
TOLERANCES	±0.1	±0.1	±0.2	±0.3	±0.5	±0.5°
-	NAME	DATE	<div> Exercise Applied Answer's Delivered No.6 Xinghai Street,Suzhou Industry Park,China Phone +86 512 6761 3189 Fax +86 512 6761 1489</div> <div>TITLE</div> <div>MCase Terminal Adapter</div>			
-	D CHENG	29/6/2015				
CHECKED	-	-				
-	-	-				
-	-	-				
THIRD ANGLE PROJECTION						
						
DO NOT SCALE DRAWING			SIZE B	DWG. NO. OL-875-584		REV. A
SCALE 2:1					SHEET 1 OF 1	