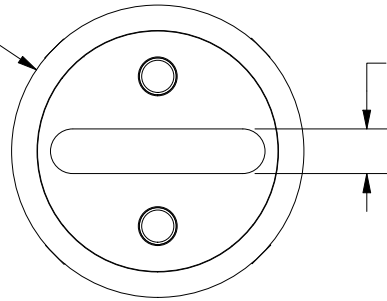


Ø30.94 ± 0.381  
[Ø1.218 ± 0.015]



4.75 ± 0.15  
[0.187 ± 0.006]

8.74 ± 0.25  
[0.344 ± 0.010]

22.73 ± 0.89  
[0.895 ± 0.035]

10.51 ± 0.25  
[0.414 ± 0.010]

70.32 ± 1.60  
[2.768 ± 0.063]

73.86 ± 1.60  
[2.908 ± 0.063]

92.08 ± 1.60  
[3.625 ± 0.063]

53.98  
[2.125]

# REVISION

| REV | DATE    | DESCRIPTION             |
|-----|---------|-------------------------|
| A   | 6/29/23 | 526672GCP - RELEASE MRY |

| 1  |              |             |       |     |
|----|--------------|-------------|-------|-----|
| NO | COMPONENT NO | DESCRIPTION | QTY/M | U/M |

## BILL OF MATERIAL

|     |  |
|-----|--|
| <S> | CRITICAL CHARACTERISTIC FOR PART SAFETY/COMPLIANCE   |
| ●   | DENOTES CRITICAL CHARACTERISTICS.  |
| CPK | DENOTES CPK DIMENSIONS, -MINIMUM CPK VALUE   |
| ST  | DENOTES A CHARACTERISTIC THAT PROVIDES AN INDICATION OF PROCESS PERFORMANCE. PROCEDURE FOR MEASUREMENT AND TRACKING TO BE DEFINED IN LITTELFUSE INSPECTION INSTRUCTIONS. |
| CP  | DENOTES CP DIMENSIONS, -MINIMUM CP VALUE MUST BE WITHIN THE DIMENSIONAL LIMITATIONS SHOWN ON DRAWING AND INITIALLY LOCATED TO ALLOW FOR MAXIMUM TOOL LIFE.               |

A

|               |                   |              |                               |
|---------------|-------------------|--------------|-------------------------------|
| MATL SPEC     |                   | FINISH       |                               |
| DRW<br>JMoler | DATE<br>6/21/2023 | SCALE<br>NTS | FINISH GOOD WT<br>GRAMS/PIECE |

UNLESS OTHERWISE SPECIFIED, DIMENSIONS ARE IN MILLIMETERS, DIMENSIONS IN BRACKETS [ ] ARE INCHES DIMENSIONING AND DO NOT INCLUDE PLATING. TOLERANCING TO BE INTERPRETED IN ACCORDANCE WITH ANSI Y14.5M-1994

3RD ANGLE  
PROJECTION



## TITLE

L50QS 125-200A OUTLINE



REVISION

A

DRWG NO.

OL-L50QS200

SHEET 1 OF 1