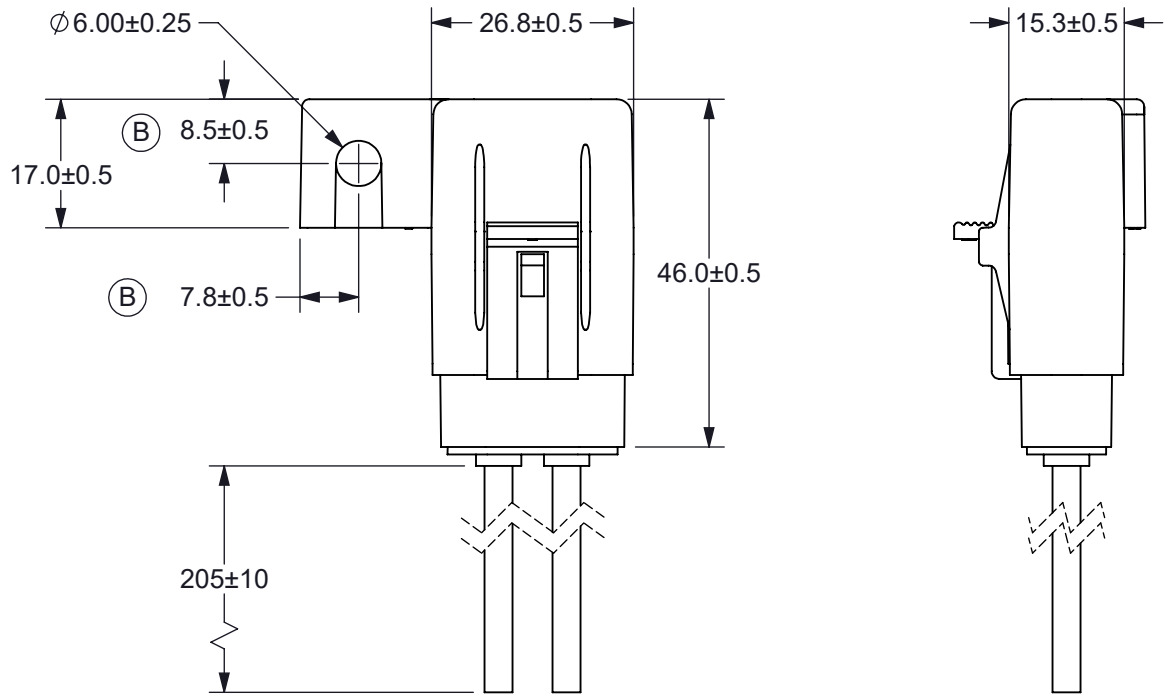
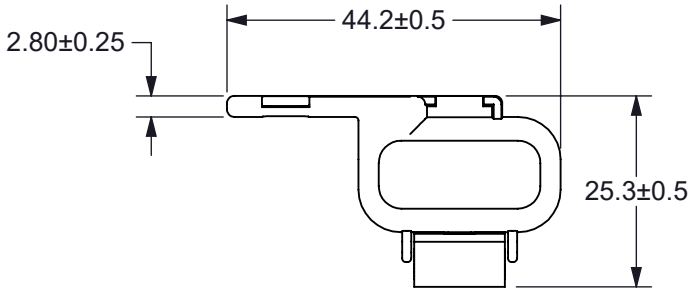


THIS DRAWING AND THE INFORMATION CONTAINED WITHIN IT ARE CONFIDENTIAL AND MAY NOT BE COPIED OR DISCLOSED WITHOUT THE WRITTEN PERMISSION OF LITTELFUSE.

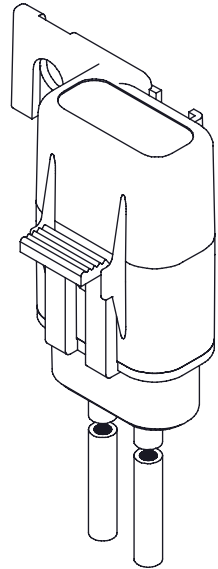
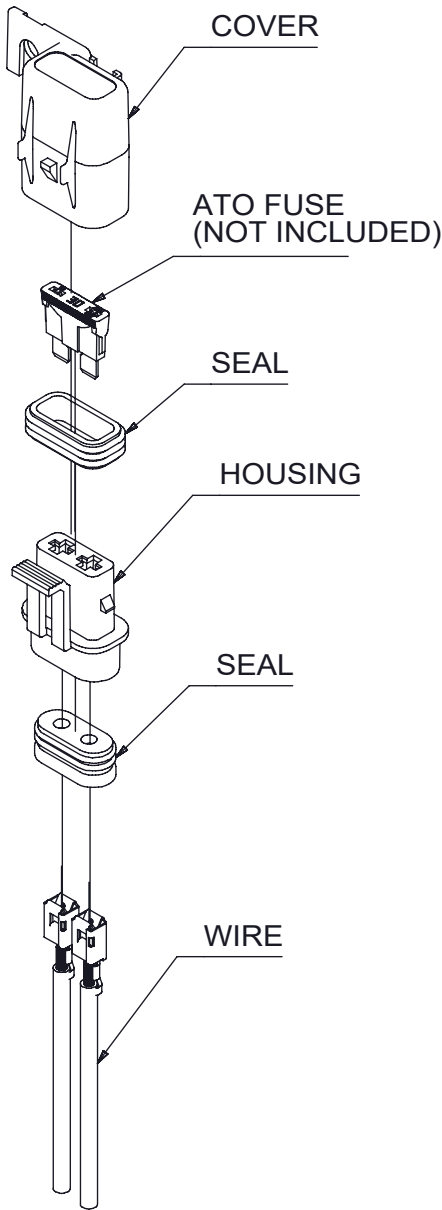
REVISIONS				
REV.	CHANGE NO.	DESCRIPTION	DATE	APPROVED
A	520748	PRODUCTION RELEASE	04/29/2019	DGK
B	521389	ADDED TIN TO WIRE. ADDED HOLE DIMENSIONS.	10/16/2019	DGK




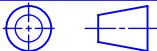
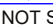


NOTES:

1. HOUSING AND COVER MATERIAL: BLACK PC
2. SEAL MATERIAL: SILICONE
3. WIRE: 14 AWG STRANDED COPPER, RED GXL WIRE, 125°C TEMPERATURE RATING, TINNED
4. FOR USE WITH ISO 8820 TYPE 'C' FUSE (ATO FUSE).
5. RATING: 20A MAXIMUM, 32Vdc
6. FUSEHOLDER IS DUST TIGHT AND PROTECTED AGAINST IMMERSION, IP67 RATED.
7. FUSE IS NOT INCLUDED.
8. FUSEHOLDER IS TO BE RoHS COMPLIANT.

(B)



INTERPRET DRAWING TO ANSI/ASME Y14.5-1994.					
	FIT/ FUNCTION CRITICAL CHARACTERISTICS SYMBOL				
<S>	SAFETY/ COMPLIANCE CRITICAL CHARACTERISTICS SYMBOL				
CPK	DENOTES CPK DIMENSIONS MINIMUM CPK VALUE				
	DENOTES A CHARACTERISTIC THAT PROVIDES AN INDICATION OF PROCESS PERFORMANCE.PROCEDURE FOR MEASUREMENTAND TRACKINGTO BE DEFINED IN LITTELFUSE INSPECTION INSTRUCTIONS				
CP	DENOTES CP DIMENSIONS, -MINIMUM CP VALUE MUST BE WITHIN THE DIMENSIONAL LIMITATIONS SHOWN ON DRAWING AND INITIALLY LOCATED TO ALLOW FOR MAXIMUM TOOL LIFE				
DIMENSION: MM TOLERANCES UNLESS OTHERWISE SPECIFIED ONE PLACE DECIMAL ± 0.5 THREE PLACES DECIMAL ± 0.100 TWO PLACES DECIMAL ± 0.20 ANGULAR ± 2°					
	NAME	DATE	 Littelfuse® Expertise Applied Answers Delivered		
DRAWN	DGK	05/29/2019			
CHECKED	MS	06/26/2019			
	-	-			
	-	-	TITLE FUSEHOLDER, IN-LINE ATO 14 AWG GXL, SEALED		
FORM NO: CVP-PE40-0004 REV A					
THIRD ANGLE PROJECTION					
					
			SIZE B	DWG. NO. OL-FHAS101	REV. B
DO NOT SCALE DRAWING			SCALE 1:2		SHEET 1 OF 1