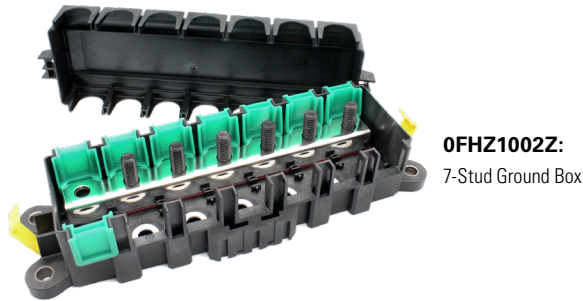
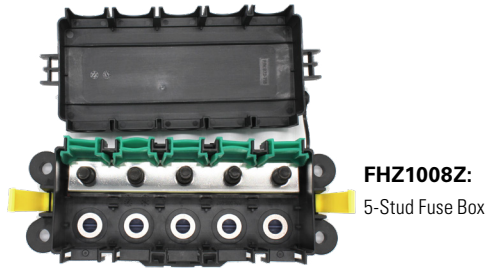


Installation Instructions

FHZ Series Fuse Holders

Part Numbers: FHZ1008Z, 0FHZ1002Z

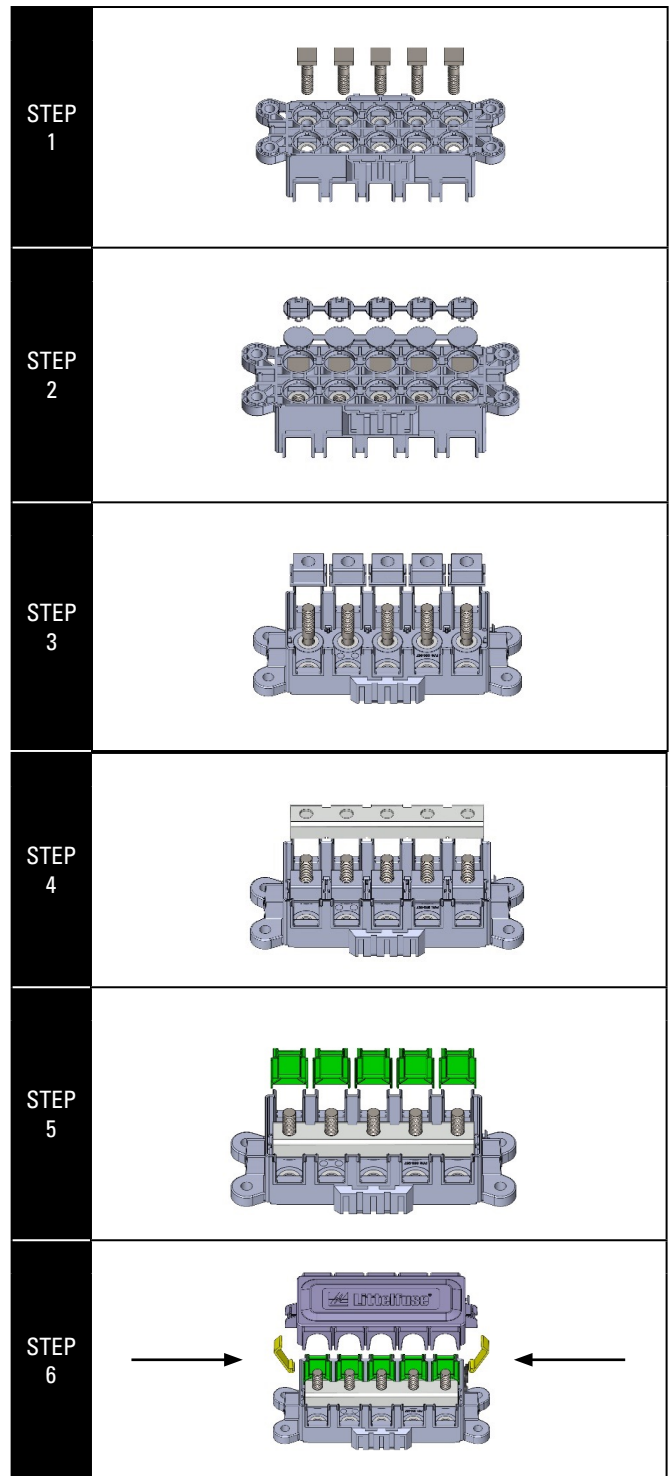


ZCASE® FHZ Series bolt-down power distribution modules are configurable five-stud and seven-stud fuse holders designed for primary high-current power distribution. They use a power input terminal, which is usually paired with a ZCASE® shunt for the input. With common bussed power, configurable studs (M6, M8, or M10), and appropriate ZCASE® fuses (sold separately, unless indicated), a wide variety of automotive power distribution module (PDM) configurations are possible. In addition, dust covers keep dust out of the backside of the fuse box, while a cover protects the fuses from debris.

Installation

Assemble the fuse holder in the following sequence:

1. Put the M10 studs into the bottom hole of base.
2. Assemble the 2 piece bottom cap on base to fix studs (apply pressure until clicking sound is heard).
3. Assemble the single supports on base through studs.
4. Put 1 piece U-shaped busbar on support.
5. Assemble the dust covers on base (slide down the dust covers until it completely fits on base).
6. Assemble 2 piece latch, 1 piece tether and 1 piece cover onto base.



Web Resources

Download 2D print and technical resources at:
littelfuse.com/FHZseries

Installation Instructions

FHZ Series Fuse Holders

Part Numbers: 0FHZ0001Z, 0FHZ0002Z, 0FHZ0003Z 0FHZ0005Z,
 0FHZ0006Z, 0FHZ0007Z, 0FHZ0008Z & 0FHZ0009Z

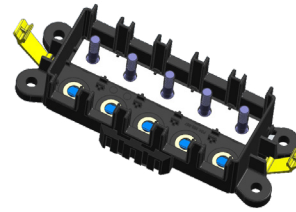


Installation

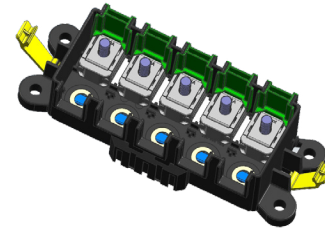
Assemble the fuse holder in the following sequence:

1. Open AssureLatches and remove cover. If you are using the 0FHZ0002Z, remove the nuts and the green rubber dust covers.
2. Place the ZCASE fuses on the studs to match stud size and loads. If you are using the optional dust covers replace them in the slots all the way down allowing the tabs to engage the fuse bodies.
 - Remember when selecting fuse values the continuous current through a fuse should be calculated as 75% of the rated value of the fuse (200A fuse should carry 150A max continuous current).
 - The total long term continuous current for all fuses should not exceed 400A.
 - Intermittent loads such as motor start, starter or compressor should not exceed 600A for 20 seconds.
3. Place ZCASE fuse holder into the mounting position and mark the location on the mounting surface for the mounting bolts. Drill four holes to accommodate the M8 Mounting hardware. Bolt the holder to the mounting surface with four M8 bolts torqued to XXNm maximum
4. Place an appropriate sized output cable with an a terminal matched to the stud size on the top of the ZCASE fuses and put on an appropriate nuts on the isolated studs. Torque the nuts to $14\text{Nm} \pm 2\text{Nm}$ for M8 studs and $16\text{Nm} \pm 2\text{Nm}$ for M10 studs. Be sure to hold the wire and terminal while applying torque to prevent twisting which can damage the fuse element.
5. Be sure that the output cables are routed so they have sufficient bend radius and are not at risk of being damaged or pinched. Lastly, make sure that all cables are strain relieved by being supported within 18" of the battery.
6. Replace the cover and snap the AssureLatch latches into place Note: the cover is designed to take a label, so good practice is to label the fuse box so each fuse and its loads are identified, as this makes troubleshooting later much easier

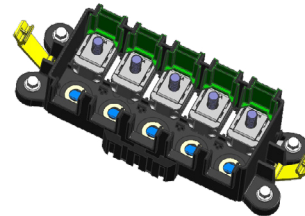
STEP
1



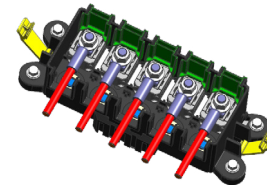
STEP
2



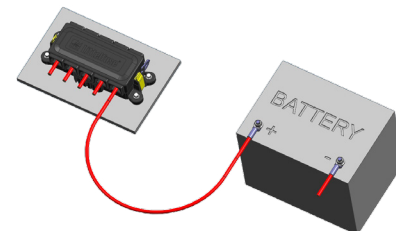
STEP
3



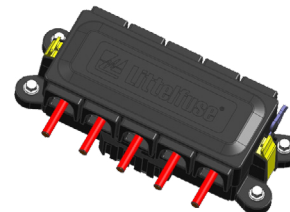
STEP
4



STEP
5



STEP
6



Web Resources

Download 2D print and technical resources at:
littelfuse.com/FHZseries