

## Specification Status: RESTRICTED

### Marking:

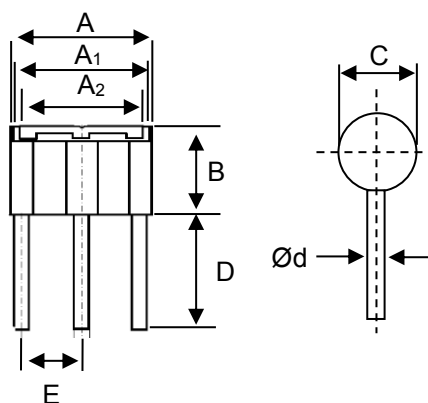
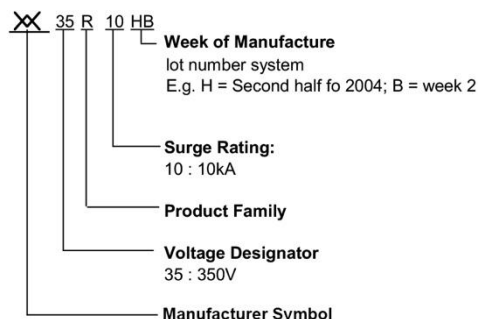


TABLE I. DIMENSIONS

	A		A <sub>1</sub>	A <sub>2</sub>		B		C		D		E		Ød
	MIN	MAX	NOM	MIN	MAX	MIN	MAX	MIN	MAX	MIN	MAX	MIN	MAX	NOM
mm:	9.0	9.4	8.6	7.9	8.5	5.8	6.2	5.8	6.2	7.5	8.5	3.6	4.0	0.8
in.*	(0.354)	(0.370)	(0.339)	(0.311)	(0.335)	(0.228)	(0.244)	(0.228)	(0.244)	(0.295)	(0.335)	(0.142)	(0.158)	(0.032)

\*Rounded off approximation

TABLE II. Electrical Characteristics

	DC Sparkover Voltage	Impulse Sparkover Voltage	Insulation Resistance	Capacitance	Impulse Discharge Current 8/20 µs	Impulse Discharge Current 10/1000 µs	AC Discharge Current, 50 Hz
	(A-E) (B-E)	(A-E) (B-E)			(A+B-E)	(A+B-E)	(A+B-E)
Part Number	@ 100V/s	@1kV / µs	@100 V <sub>DC</sub>	@ 1MHz	Repeat 10 times (5 times, each polarity)	300 times	Repeat 1s duration
GTCR36-351M-R10-FT	350V ± 20%	< 900V	≥ 1,000MΩ	<1.5pF	10kA	200A	10A, 10 times

### General Characteristics

No Radioactive Materials

Storage temperature: -40°C ... +85°C

Operating temperature: -40°C ... +85°C

Electrode Material: Tin Plating

Body Material: Ni Plating

### Materials Information

RoHS Compliant

ELV Compliant

Directive 2002/95/EC  
Compliant

Directive 2000/53/EC  
Compliant

Precedence: This specification takes precedence over documents referenced herein.  
Effectivity: Reference documents shall be the issue in effect on the date of invitation for bid.  
CAUTION: Operation beyond the rated voltage or current may result in rupture, electrical arcing or flame.

# Gas Discharge Tube

**Overvoltage Protection Device**

**PRODUCT: GTCR36-351M-R10-FT**

DOCUMENT: SCD26767  
REV LETTER: C  
REV DATE: JULY 26, 2016  
PAGE NO.: 2 OF 2

Information furnished is believed to be accurate and reliable. However, users should independently evaluate the suitability of and test each product selected for their own applications. Littelfuse products are not designed for, and shall not be used for, any purpose (including, without limitation, military, aerospace, medical, lifesaving, life- sustaining or nuclear facility applications, devices intended for surgical implant into the body, or any other application in which the failure or lack of desired operation of the product may result in personal injury, death, or property damage) other than those expressly set forth in applicable Littelfuse product documentation. Warranties granted by Littelfuse shall be deemed void for products used for any purpose not expressly set forth in applicable Littelfuse documentation. Littelfuse shall not be liable for any claims or damages arising out of products used in applications not expressly intended by Littelfuse as set forth in applicable Littelfuse documentation. The sale and use of Littelfuse products is subject to Littelfuse Terms and Conditions of Sale, unless otherwise agreed by Littelfuse.