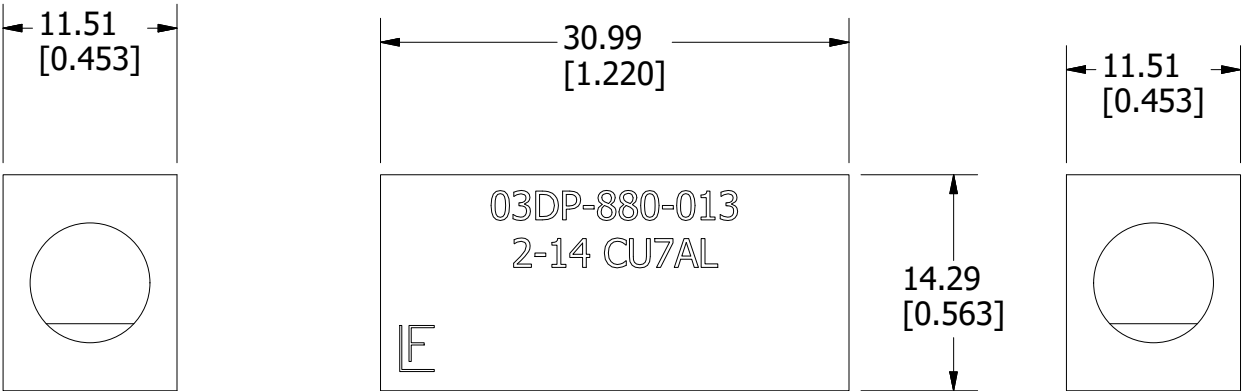
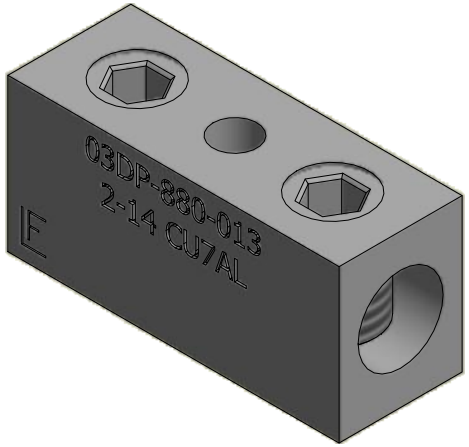
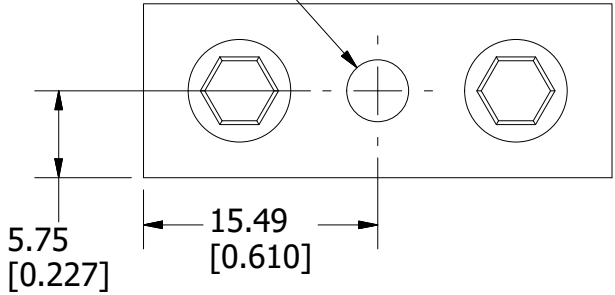


Ø4.10 THRU
[Ø0.161 THRU]



SPECIFICATIONS:

VOLTAGE RATING: 600V

AMPERE RATING: 115 AMP CU; 90 AMP AL

SUGGESTED TORQUE (LINE): 5.6 N-m (50 IN-LBS) 2-6 AWG
4.5 N-m (40 IN-LBS) 8-14 AWG

SUGGESTED TORQUE (LOAD): 5.6 N-m (50 IN-LBS) 2-6 AWG
4.5 N-m (40 IN-LBS) 8-14 AWG

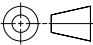
WIRE RANGE (LINE): 2-14 AWG Cu/Al
SOLID/STRANDED


WIRE RANGE (LOAD): 2-14 AWG Cu/Al
SOLID/STRANDED

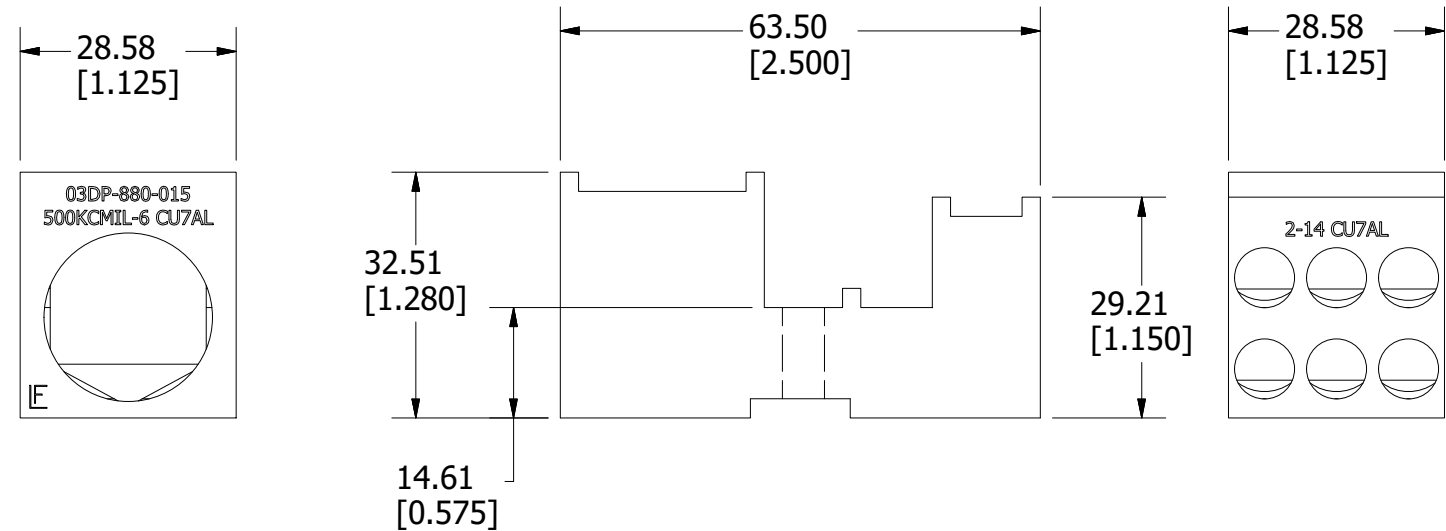
FASTENER: M4 (#8)

APPROVALS: cULus (FILE NO. E502265)

REVISION		
REV	DATE	DESCRIPTION
A	9/19/18	519868GCP - RELEASE PER EM3052 MRY
B	10/26/20	522955ECP/D - ADD MOUNTING HOLE DIMENSIONS MRY

●	DENOTES CRITICAL CHARACTERISTICS.		
CPK	DENOTES CPK DIMENSIONS, -MINIMUM CPK VALUE		
ST	DENOTES A CHARACTERISTIC THAT PROVIDES AN INDICATION OF PROCESS PERFORMANCE. PROCEDURE FOR MEASUREMENT AND TRACKING TO BE DEFINED IN LITTELFUSE INSPECTION INSTRUCTIONS.		
CP	DENOTES CP DIMENSIONS, -MINIMUM CP VALUE MUST BE WITHIN THE DIMENSIONAL LIMITATIONS SHOWN ON DRAWING AND INITIALLY LOCATED TO ALLOW FOR MAXIMUM TOOL LIFE.		B
MATL SPEC		FINISH	
DRW myork	DATE 8/17/2018	SCALE NTS	FINISH GOOD WT GRAMS/PIECE
UNLESS OTHERWISE SPECIFIED, DIMENSIONS ARE IN MILLIMETERS, DIMENSIONS IN BRACKETS [] ARE INCHES DIMENSIONING AND DO NOT INCLUDE PLATING. TOLERANCING TO BE INTERPRETED IN ACCORDANCE WITH ANSI Y14.5M-1994			
3RD ANGLE PROJECTION			
			
TITLE WCL001 OUTLINE			

 Littelfuse® CHICAGO, ILLINOIS 60631	REVISION	DRWG NO.	SHEET 1 OF 1
	B	OL-WCL001	



SPECIFICATIONS:

VOLTAGE RATING: 600V

AMPERE RATING: 380 AMP CU; 310 AMP AL

SUGGESTED TORQUE (LINE): 42.4 N-m (375 IN-LBS)

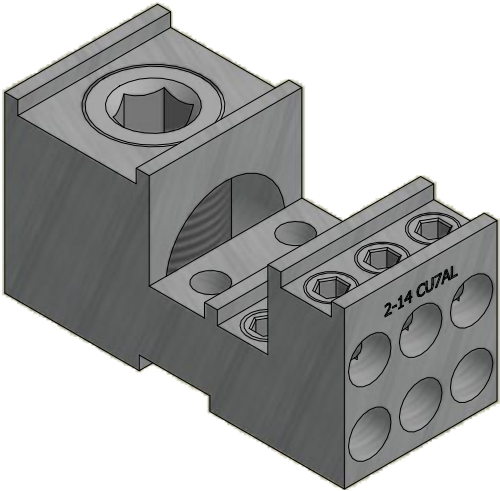
SUGGESTED TORQUE (LOAD): 5.6 N-m (50 IN-LBS) 2-16 AWG
4.5 N-m (40 IN-LBS) 8-14 AWG

WIRE RANGE (LINE): 500MCM - 6 AWG Cu/Al
SOLID/STRANDED

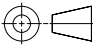
WIRE RANGE (LOAD): 2-14 AWG Cu/Al
SOLID/STRANDED


FASTENER: M5 (#10)

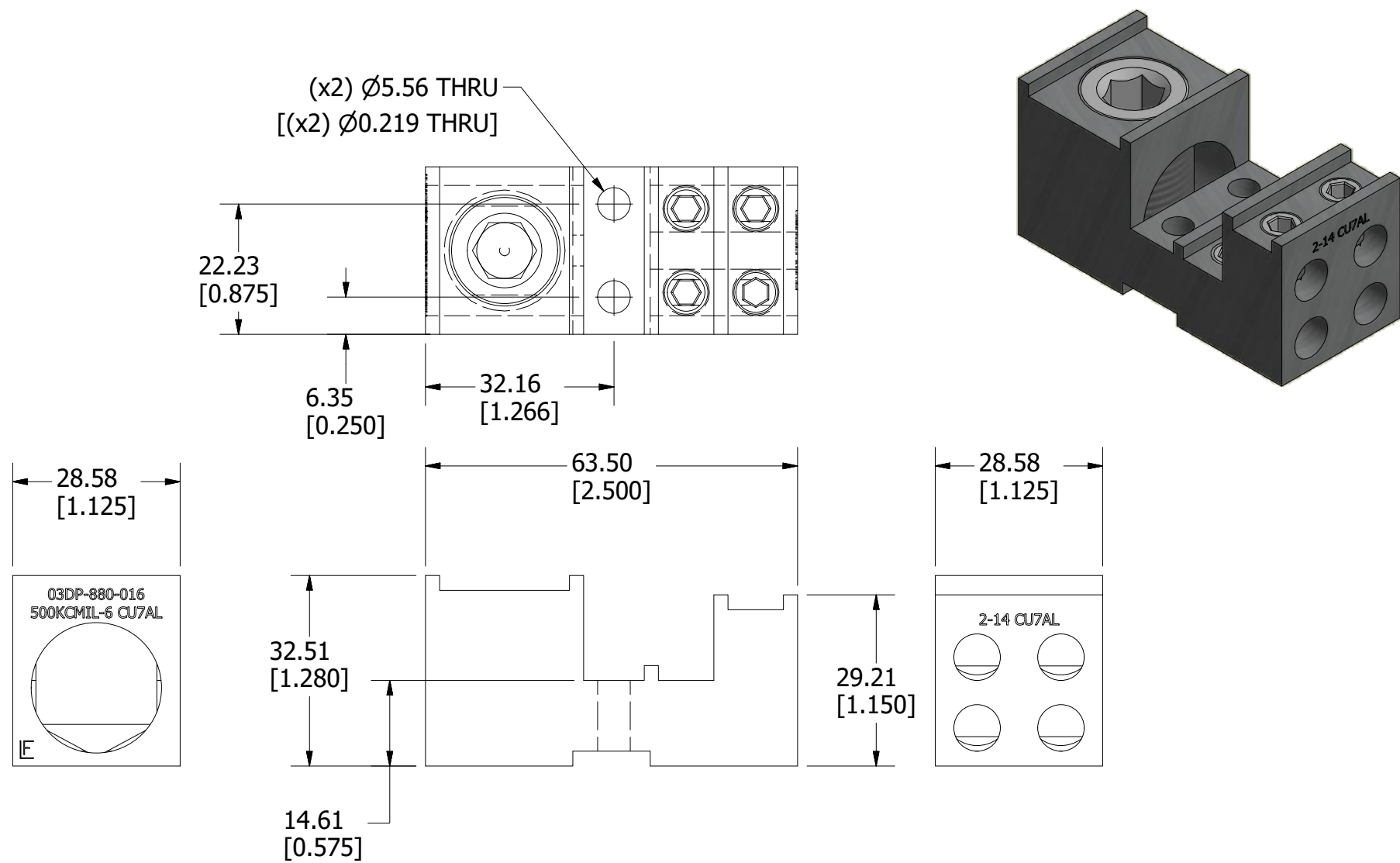
APPROVALS: cULus (FILE NO. E502265)



REVISION			
REV	DATE	DESCRIPTION	
A	9/19/18	519868GCP - RELEASE PER EM3052 MRY	
B	10/26/20	522955ECP/D - ADD MOUNTING HOLE DIMENSIONS MRY	

●	DENOTES CRITICAL CHARACTERISTICS.		
CPK	DENOTES CPK DIMENSIONS, -MINIMUM CPK VALUE		
ST	DENOTES A CHARACTERISTIC THAT PROVIDES AN INDICATION OF PROCESS PERFORMANCE. PROCEDURE FOR MEASUREMENT AND TRACKING TO BE DEFINED IN LITTELFUSE INSPECTION INSTRUCTIONS.		
CP	DENOTES CP DIMENSIONS, -MINIMUM CP VALUE MUST BE WITHIN THE DIMENSIONAL LIMITATIONS SHOWN ON DRAWING AND INITIALLY LOCATED TO ALLOW FOR MAXIMUM TOOL LIFE.		B
MATL SPEC		FINISH	
DRW myork	DATE 8/17/2018	SCALE NTS	FINISH GOOD WT GRAMS/PIECE
UNLESS OTHERWISE SPECIFIED, DIMENSIONS ARE IN MILLIMETERS, DIMENSIONS IN BRACKETS [] ARE INCHES DIMENSIONING AND DO NOT INCLUDE PLATING. TOLERANCING TO BE INTERPRETED IN ACCORDANCE WITH ANSI Y14.5M-1994			
3RD ANGLE PROJECTION			
			
TITLE WCL003 OUTLINE			

 Littelfuse® CHICAGO, ILLINOIS 60631	REVISION	DRWG NO.	SHEET 1 OF 1
	B	OL-WCL003	



SPECIFICATIONS:

VOLTAGE RATING: 600V

AMPERE RATING: 380 AMP CU; 310 AMP AL

SUGGESTED TORQUE (LINE): 42.4 N-m (375 IN-LBS)

SUGGESTED TORQUE (LOAD): 5.6 N-m (50 IN-LBS) 2-16 AWG
4.5 N-m (40 IN-LBS) 8-14 AWG

WIRE RANGE (LINE): 500MCM - 6 AWG Cu/Al
SOLID/STRANDED

WIRE RANGE (LOAD): 2-14 AWG Cu/Al
SOLID/STRANDED

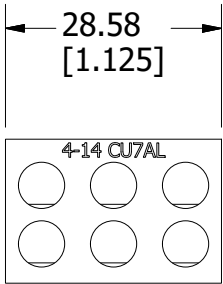
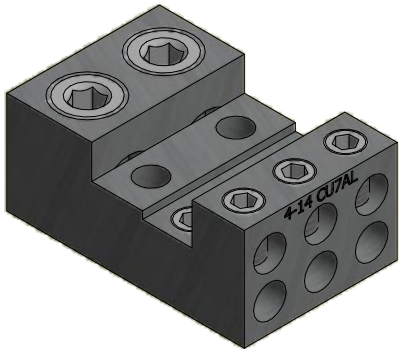
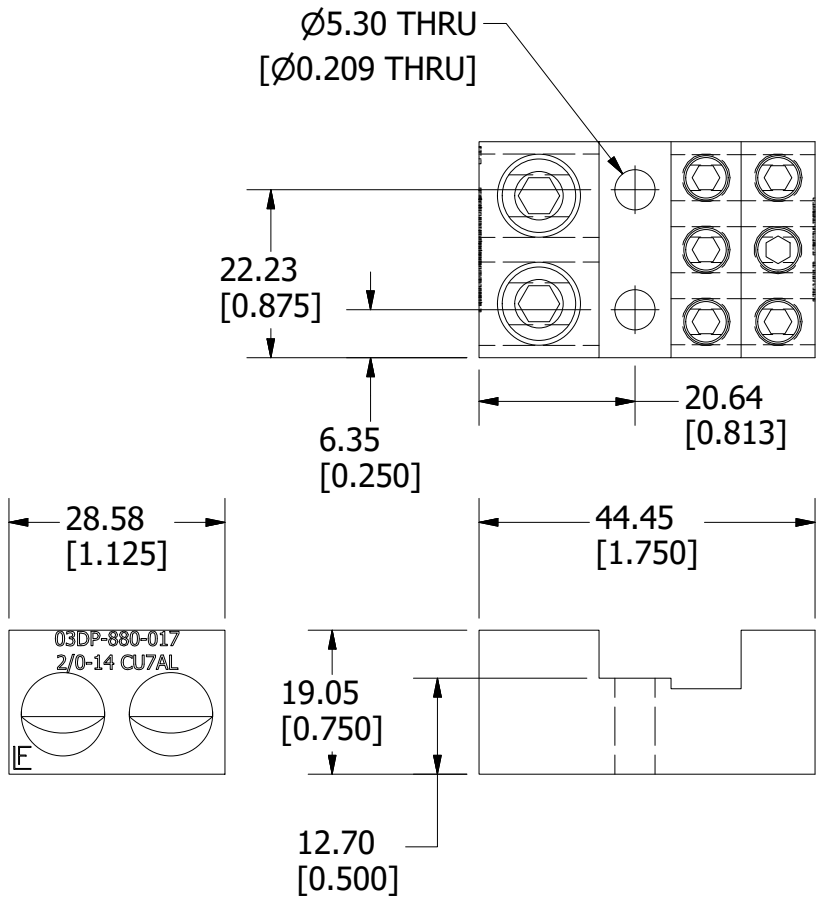
FASTENER: M5 (#10)

APPROVALS: cULus (FILE NO. E502265)

REVISION			
REV	DATE	DESCRIPTION	
A	9/19/18	519868GCP - RELEASE PER EM3052 MRY	
B	10/26/20	522955ECP/D - ADD MOUNTING HOLE DIMENSIONS MRY	

●	DENOTES CRITICAL CHARACTERISTICS.		
CPK	DENOTES CPK DIMENSIONS, -MINIMUM CPK VALUE		
⬡ST⬡	DENOTES A CHARACTERISTIC THAT PROVIDES AN INDICATION OF PROCESS PERFORMANCE. PROCEDURE FOR MEASUREMENT AND TRACKING TO BE DEFINED IN LITTELFUSE INSPECTION INSTRUCTIONS.		
CP	DENOTES CP DIMENSIONS, -MINIMUM CP VALUE MUST BE WITHIN THE DIMENSIONAL LIMITATIONS SHOWN ON DRAWING AND INITIALLY LOCATED TO ALLOW FOR MAXIMUM TOOL LIFE.		
MATL SPEC		FINISH	
DRW myork	DATE 8/17/2018	SCALE NTS	FINISH GOOD WT GRAMS/PIECE
UNLESS OTHERWISE SPECIFIED, DIMENSIONS ARE IN MILLIMETERS, DIMENSIONS IN BRACKETS [] ARE INCHES DIMENSIONING AND DO NOT INCLUDE PLATING. TOLERANCING TO BE INTERPRETED IN ACCORDANCE WITH ANSI Y14.5M-1994			
3RD ANGLE PROJECTION 			
TITLE		WCL004 OUTLINE	
Littelfuse CHICAGO, ILLINOIS 60631		REVISION B	DRWG NO. OL-WCL004

SHEET 1 OF 1



SPECIFICATIONS:

VOLTAGE RATING: 600V

AMPERE RATING: 350 AMP CU; 270 AMP AL

SUGGESTED TORQUE (LINE): 13.6 N-m (120 IN-LBS) 2/0-6 AWG
4.5 N-m (40 IN-LBS) 8-14 AWG

SUGGESTED TORQUE (LOAD): 4.0 N-m (35 IN-LBS)

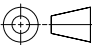
WIRE RANGE (LINE): 2/0-14 AWG Cu/Al
SOLID/STRANDED


WIRE RANGE (LOAD): 4-14 AWG Cu/Al
SOLID/STRANDED

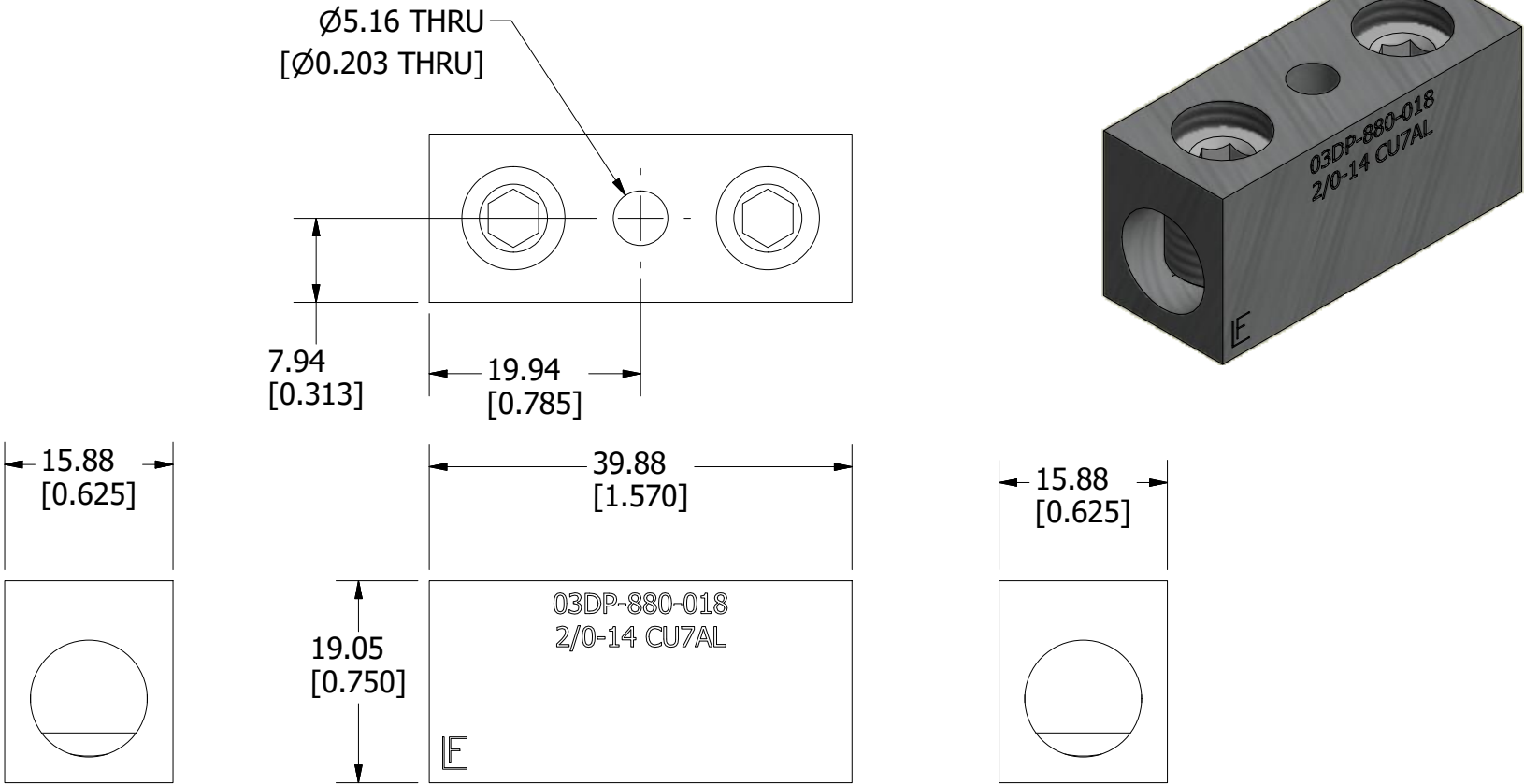
FASTENER: M5 (#10)

APPROVALS: cULus (FILE NO. E502265)

REVISION		
REV	DATE	DESCRIPTION
A	9/19/18	519868GCP - RELEASE PER EM3052 MRY
B	10/26/20	522955ECP/D - ADD MOUNTING HOLE DIMENSIONS MRY

●	DENOTES CRITICAL CHARACTERISTICS.		
CPK	DENOTES CPK DIMENSIONS, -MINIMUM CPK VALUE		
ST	DENOTES A CHARACTERISTIC THAT PROVIDES AN INDICATION OF PROCESS PERFORMANCE. PROCEDURE FOR MEASUREMENT AND TRACKING TO BE DEFINED IN LITTELFUSE INSPECTION INSTRUCTIONS.		
CP	DENOTES CP DIMENSIONS, -MINIMUM CP VALUE MUST BE WITHIN THE DIMENSIONAL LIMITATIONS SHOWN ON DRAWING AND INITIALLY LOCATED TO ALLOW FOR MAXIMUM TOOL LIFE.		B
MATL SPEC		FINISH	
DRW myork	DATE 8/17/2018	SCALE NTS	FINISH GOOD WT GRAMS/PIECE
UNLESS OTHERWISE SPECIFIED, DIMENSIONS ARE IN MILLIMETERS, DIMENSIONS IN BRACKETS [] ARE INCHES DIMENSIONING AND DO NOT INCLUDE PLATING. TOLERANCING TO BE INTERPRETED IN ACCORDANCE WITH ANSI Y14.5M-1994			
3RD ANGLE PROJECTION			
			
TITLE WCL005 OUTLINE			

 Littelfuse® CHICAGO, ILLINOIS 60631	REVISION	DRWG NO.	SHEET 1 OF 1
	B	OL-WCL005	



SPECIFICATIONS:

VOLTAGE RATING: 600V

AMPERE RATING: 175 AMP CU; 135 AMP AL

SUGGESTED TORQUE (LINE): 13.6 N-m (120 IN-LBS) 2/0-6 AWG
4.5 N-m (40 IN-LBS) 8-14 AWG

SUGGESTED TORQUE (LOAD): 13.6 N-m (120 IN-LBS) 2/0-6 AWG
4.5 N-m (40 IN-LBS) 8-14 AWG

WIRE RANGE (LINE): 2/0-14 AWG Cu/Al
SOLID/STRANDED

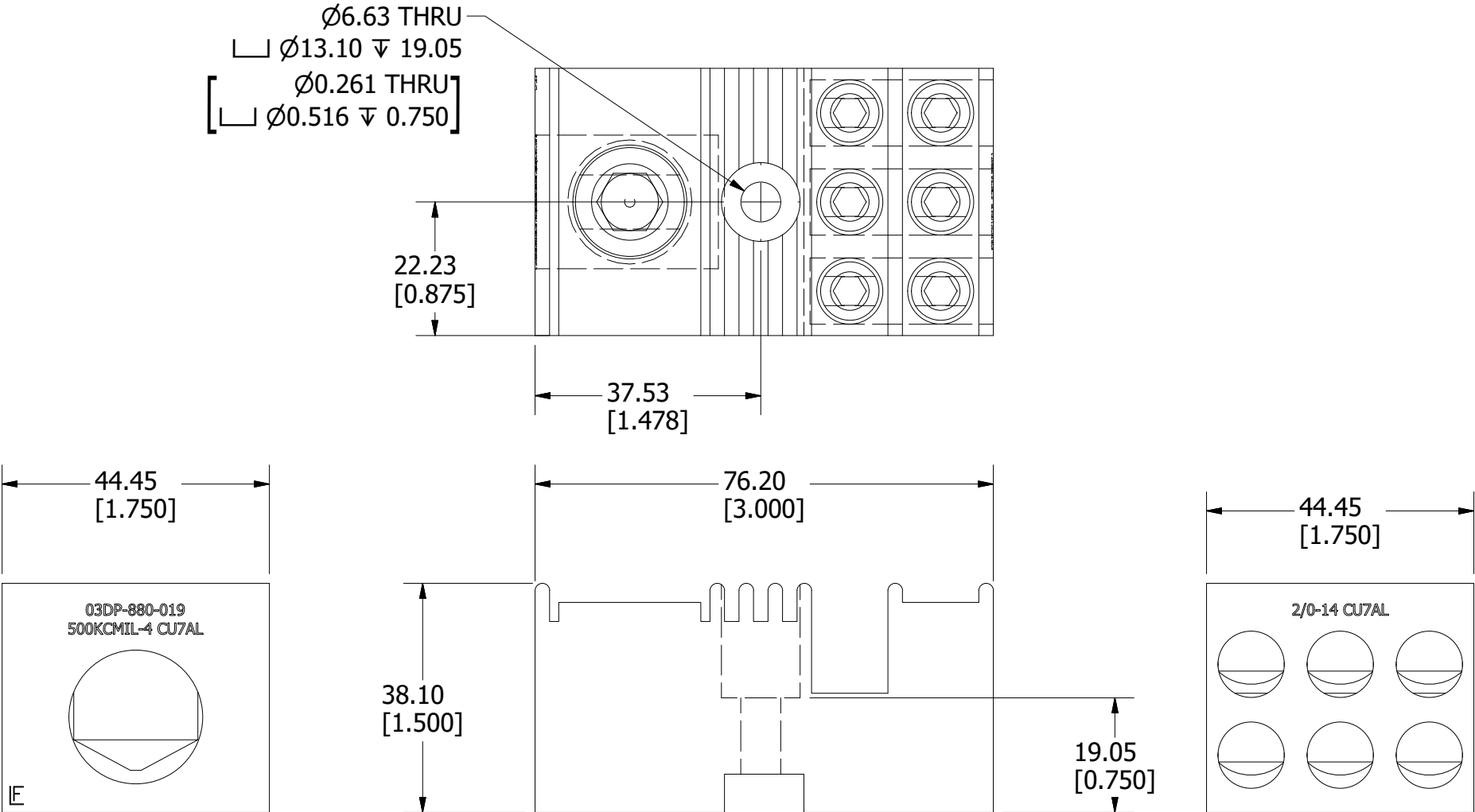
WIRE RANGE (LOAD): 2/0-14 AWG Cu/Al
SOLID/STRANDED

FASTENER: M5 (#10)

APPROVALS: cULus (FILE NO. E502265)

REVISION		
REV	DATE	DESCRIPTION
A	9/19/18	519868GCP - RELEASE PER EM3052 MRY
B	10/26/20	522955ECP/D - ADD MOUNTING HOLE DIMENSIONS MRY

●	DENOTES CRITICAL CHARACTERISTICS.		
CPK	DENOTES CPK DIMENSIONS, -MINIMUM CPK VALUE		
ST	DENOTES A CHARACTERISTIC THAT PROVIDES AN INDICATION OF PROCESS PERFORMANCE. PROCEDURE FOR MEASUREMENT AND TRACKING TO BE DEFINED IN LITTELFUSE INSPECTION INSTRUCTIONS.		
CP	DENOTES CP DIMENSIONS, -MINIMUM CP VALUE MUST BE WITHIN THE DIMENSIONAL LIMITATIONS SHOWN ON DRAWING AND INITIALLY LOCATED TO ALLOW FOR MAXIMUM TOOL LIFE.		B
MATL SPEC		FINISH	
DRW myork	DATE 8/17/2018	SCALE NTS	FINISH GOOD WT GRAMS/PIECE
UNLESS OTHERWISE SPECIFIED, DIMENSIONS ARE IN MILLIMETERS, DIMENSIONS IN BRACKETS [] ARE INCHES DIMENSIONING AND DO NOT INCLUDE PLATING. TOLERANCING TO BE INTERPRETED IN ACCORDANCE WITH ANSI Y14.5M-1994			
3RD ANGLE PROJECTION			
TITLE WCL006 OUTLINE			
Littelfuse® CHICAGO, ILLINOIS 60631		REVISION B	DRWG NO. OL-WCL006
		SHEET 1 OF 1	



SPECIFICATIONS:

VOLTAGE RATING: 600V

AMPERE RATING: 380 AMP CU; 310 AMP AL

SUGGESTED TORQUE (LINE): 42.4 N-m (375 IN-LBS)

SUGGESTED TORQUE (LOAD): 13.6 N-m (120 IN-LBS) 2/0-6 AWG
4.5 N-m (40 IN-LBS) 8-14 AWG

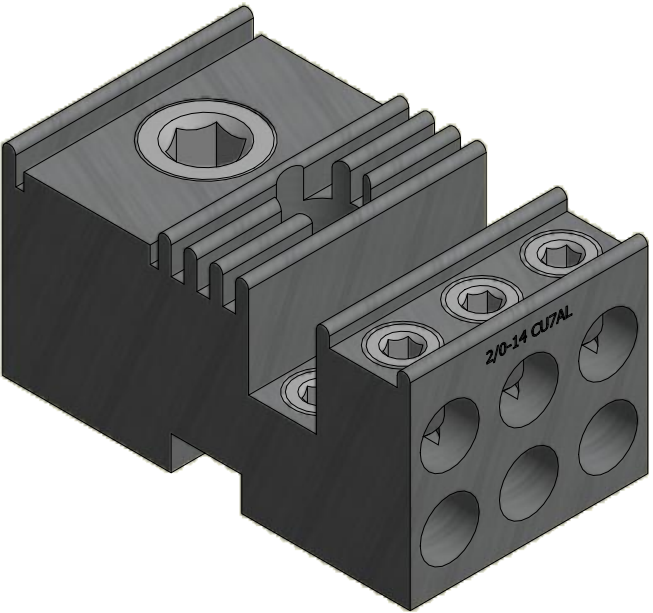
WIRE RANGE (LINE): 500MCM-4 AWG Cu/Al
SOLID/STRANDED


WIRE RANGE (LOAD): 2/0-14 AWG Cu/Al
SOLID/STRANDED

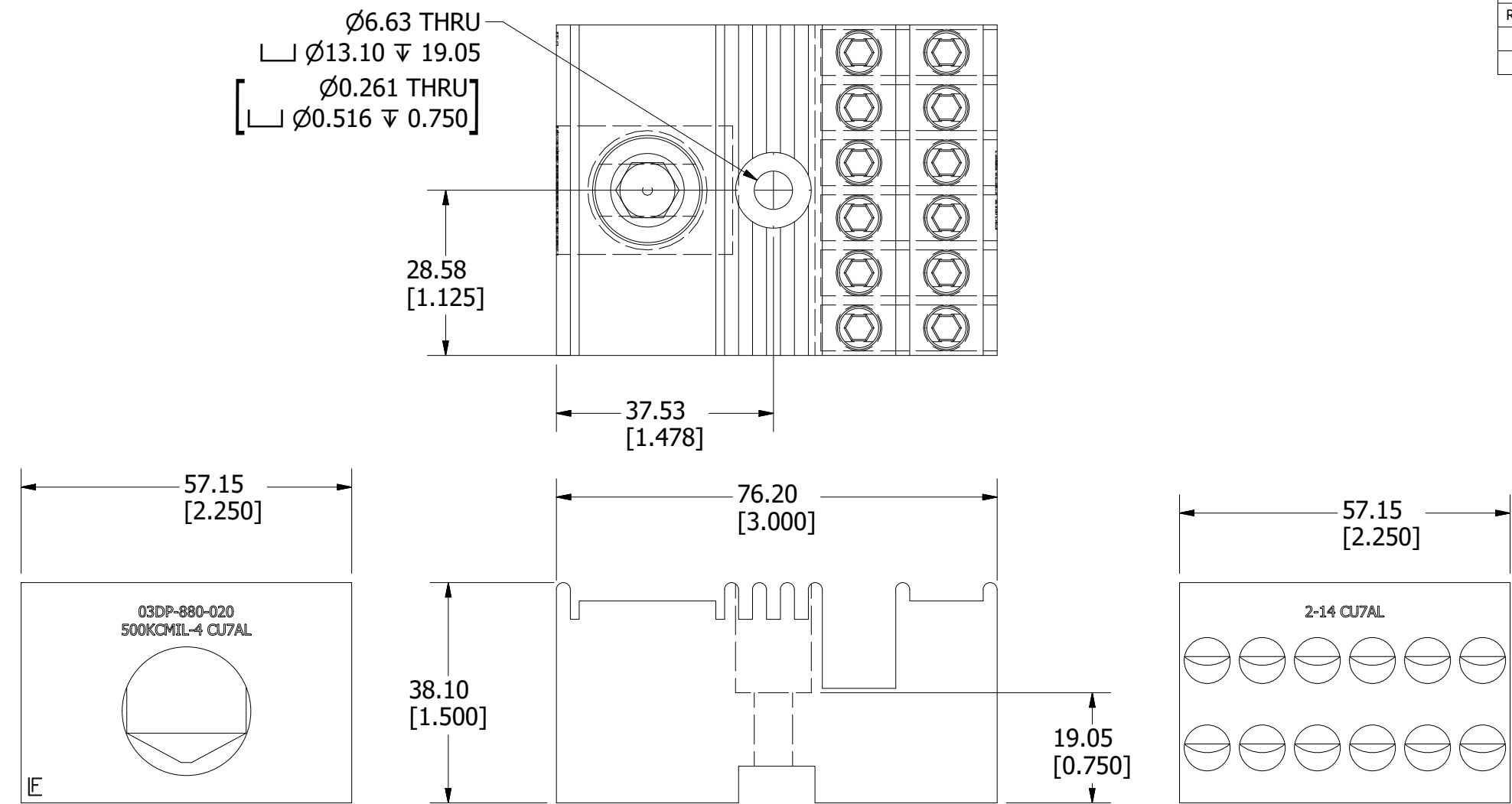
FASTENER: M6 (1/4)

APPROVALS: cULus (FILE NO. E502265)

REVISION			
REV	DATE	DESCRIPTION	
A	9/19/18	519868GCP - RELEASE PER EM3052 MRY	
B	10/26/20	522955ECP/D - ADD MOUNTING HOLE DIMENSIONS MRY	



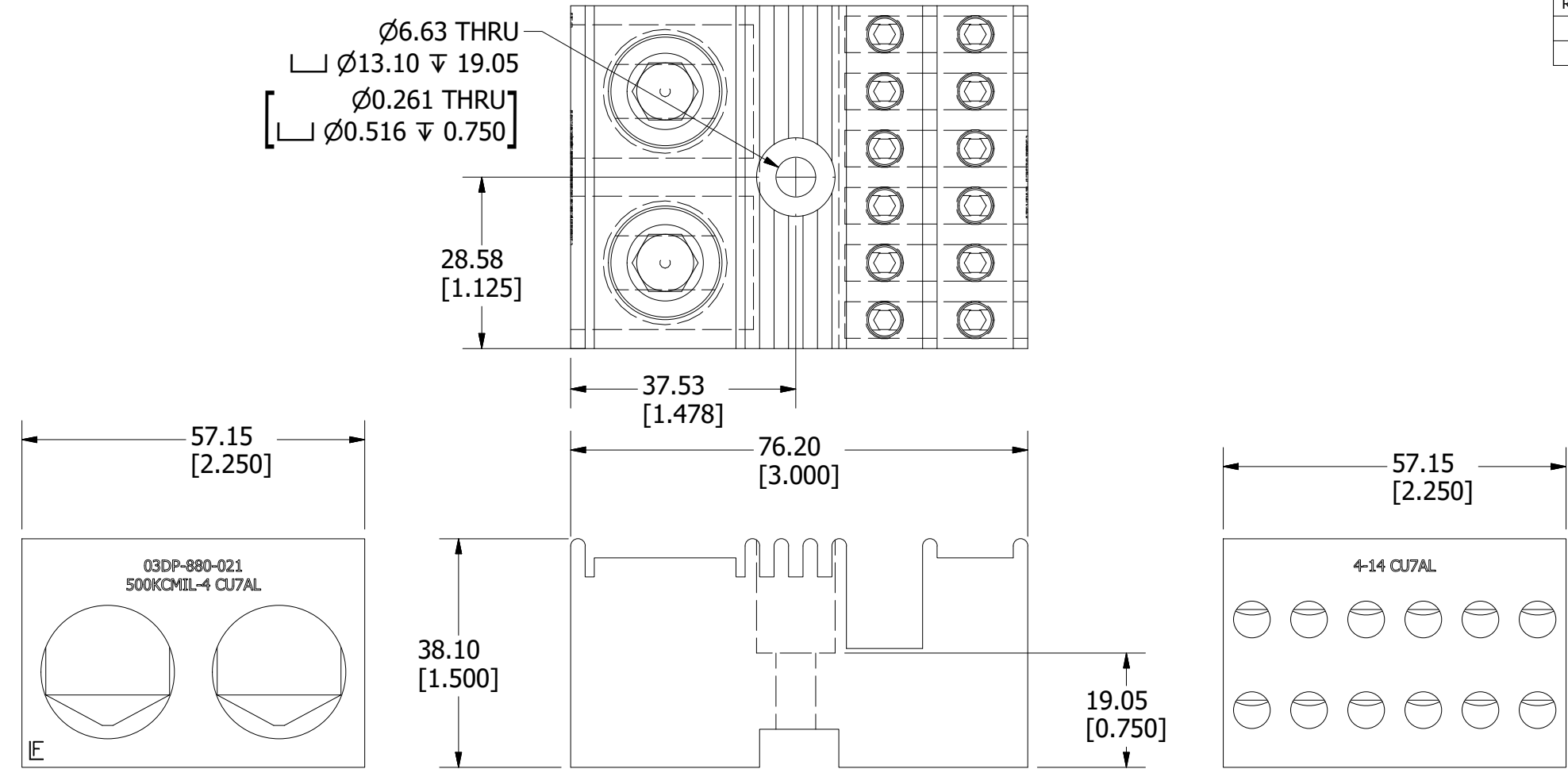
●	DENOTES CRITICAL CHARACTERISTICS.		
CPK	DENOTES CPK DIMENSIONS, -MINIMUM CPK VALUE		
ST	DENOTES A CHARACTERISTIC THAT PROVIDES AN INDICATION OF PROCESS PERFORMANCE. PROCEDURE FOR MEASUREMENT AND TRACKING TO BE DEFINED IN LITTELFUSE INSPECTION INSTRUCTIONS.		
CP	DENOTES CP DIMENSIONS, -MINIMUM CP VALUE MUST BE WITHIN THE DIMENSIONAL LIMITATIONS SHOWN ON DRAWING AND INITIALLY LOCATED TO ALLOW FOR MAXIMUM TOOL LIFE.		B
MATL SPEC		FINISH	
DRW myork	DATE 8/17/2018	SCALE NTS	FINISH GOOD WT GRAMS/PIECE
UNLESS OTHERWISE SPECIFIED, DIMENSIONS ARE IN MILLIMETERS, DIMENSIONS IN BRACKETS [] ARE INCHES DIMENSIONING AND DO NOT INCLUDE PLATING. TOLERANCING TO BE INTERPRETED IN ACCORDANCE WITH ANSI Y14.5M-1994			
3RD ANGLE PROJECTION			
TITLE WCL007 OUTLINE			
 CHICAGO, ILLINOIS 60631		REVISION B	DRWG NO. OL-WCL007 SHEET 1 OF 1



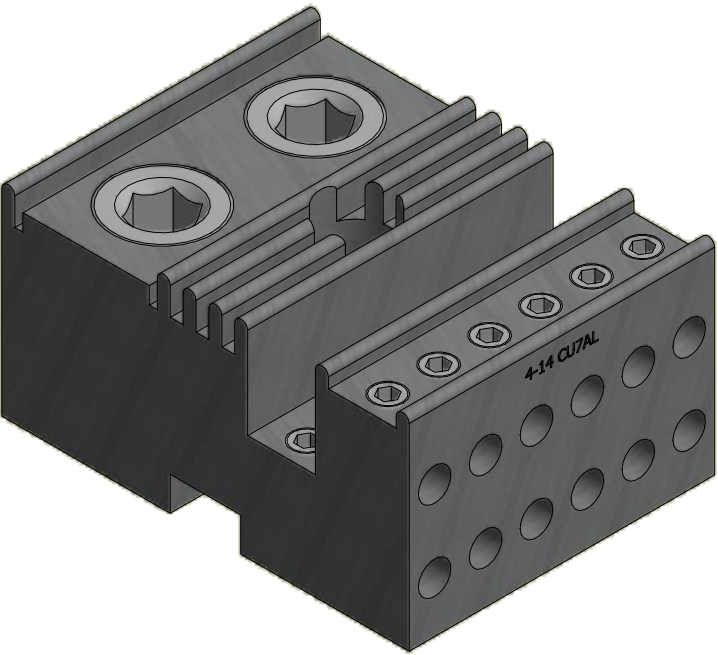
REVISION			
REV	DATE	DESCRIPTION	
A	9/19/18	519868GCP - RELEASE PER EM3052 MRY	
B	10/26/20	522955ECP/D - ADD MOUNTING HOLE DIMENSIONS MRY	


●		DENOTES CRITICAL CHARACTERISTICS.	
CPK		DENOTES CPK DIMENSIONS, -MINIMUM CPK VALUE	
ST		DENOTES A CHARACTERISTIC THAT PROVIDES AN INDICATION OF PROCESS PERFORMANCE. PROCEDURE FOR MEASUREMENT AND TRACKING TO BE DEFINED IN LITTELFUSE INSPECTION INSTRUCTIONS.	
CP		DENOTES CP DIMENSIONS, -MINIMUM CP VALUE MUST BE WITHIN THE DIMENSIONAL LIMITATIONS SHOWN ON DRAWING AND INITIALLY LOCATED TO ALLOW FOR MAXIMUM TOOL LIFE.	
MATL SPEC		FINISH	
DRW myork	DATE 8/17/2018	SCALE NTS	FINISH GOOD WT GRAMS/PIECE
UNLESS OTHERWISE SPECIFIED, DIMENSIONS ARE IN MILLIMETERS, DIMENSIONS IN BRACKETS [] ARE INCHES DIMENSIONING AND DO NOT INCLUDE PLATING. TOLERANCING TO BE INTERPRETED IN ACCORDANCE WITH ANSI Y14.5M-1994			
3RD ANGLE PROJECTION			
TITLE WCL008 OUTLINE			
Littelfuse CHICAGO, ILLINOIS 60631		REVISION B	DRWG NO. OL-WCL008

SHEET 1 OF 1



REVISION			
REV	DATE	DESCRIPTION	
A	9/19/18	519868GCP - RELEASE PER EM3052 MRY	
B	10/26/20	522955ECP/D - ADD MOUNTING HOLE DIMENSIONS MRY	



●		DENOTES CRITICAL CHARACTERISTICS.	
CPK		DENOTES CPK DIMENSIONS, -MINIMUM CPK VALUE	
ST		DENOTES A CHARACTERISTIC THAT PROVIDES AN INDICATION OF PROCESS PERFORMANCE. PROCEDURE FOR MEASUREMENT AND TRACKING TO BE DEFINED IN LITTELFUSE INSPECTION INSTRUCTIONS.	
CP		DENOTES CP DIMENSIONS, -MINIMUM CP VALUE MUST BE WITHIN THE DIMENSIONAL LIMITATIONS SHOWN ON DRAWING AND INITIALLY LOCATED TO ALLOW FOR MAXIMUM TOOL LIFE.	
MATL SPEC		FINISH	
DRW myork	DATE 8/17/2018	SCALE NTS	FINISH GOOD WT GRAMS/PIECE
UNLESS OTHERWISE SPECIFIED, DIMENSIONS ARE IN MILLIMETERS, DIMENSIONS IN BRACKETS [] ARE INCHES DIMENSIONING AND DO NOT INCLUDE PLATING. TOLERANCING TO BE INTERPRETED IN ACCORDANCE WITH ANSI Y14.5M-1994			
3RD ANGLE PROJECTION			
TITLE WCL009 OUTLINE			
 Littelfuse CHICAGO, ILLINOIS 60631		REVISION B	DRWG NO. OL-WCL009

SHEET 1 OF 1

SPECIFICATIONS:

VOLTAGE RATING: 600V

AMPERE RATING: 760 AMP CU; 620 AMP AL

SUGGESTED TORQUE (LINE): 42.4 N-m (375 IN-LBS)

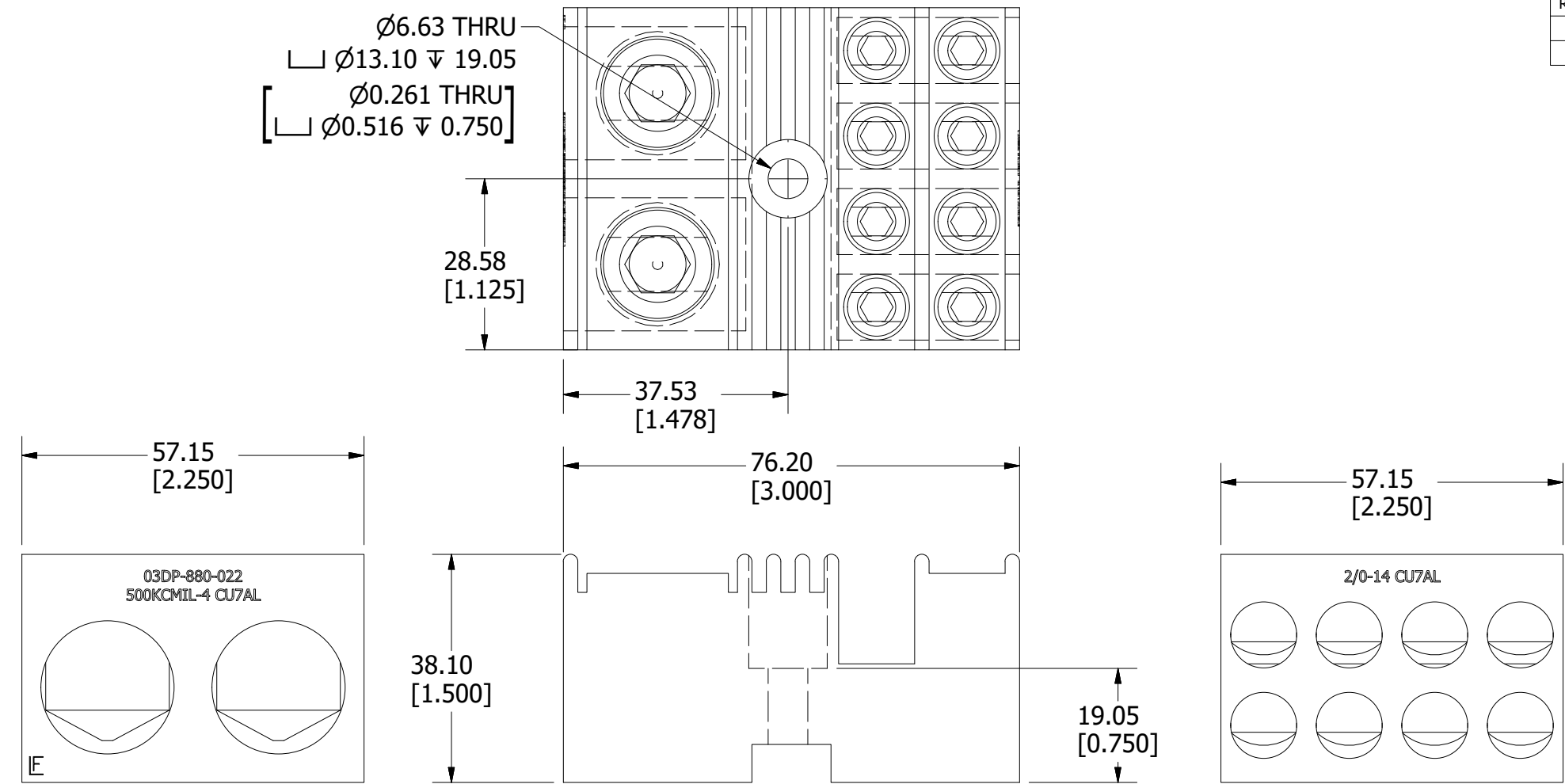
SUGGESTED TORQUE (LOAD): 4 N-m (35 IN-LBS) 4-14 AWG

WIRE RANGE (LINE): 500MCM-4 AWG Cu/Al
SOLID/STRANDED

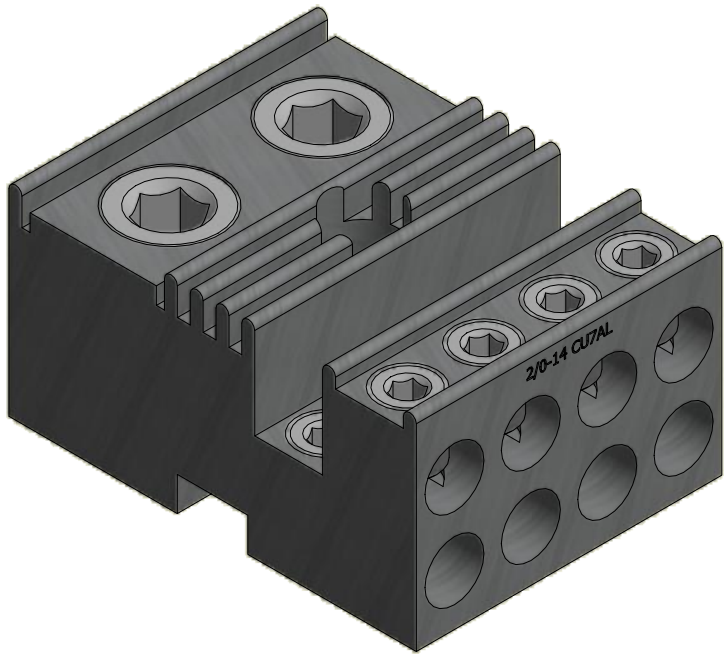
WIRE RANGE (LOAD): 4-14 AWG Cu/Al
SOLID/STRANDED

FASTENER: M6 (1/4)

APPROVALS: cULus (FILE NO. E502265)



REVISION		
REV	DATE	DESCRIPTION
A	9/19/18	519868GCP - RELEASE PER EM3052 MRY
B	10/26/20	522955ECP/D - ADD MOUNTING HOLE DIMENSIONS MRY



SPECIFICATIONS:

VOLTAGE RATING: 600V

AMPERE RATING: 760 AMP CU; 620 AMP AL

SUGGESTED TORQUE (LINE): 42.4 N-m (375 IN-LBS)



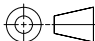

SUGGESTED TORQUE (LOAD): 13.6 N-m (120 IN-LBS) 2/0-6 AWG
4.5 N-m (40 IN-LBS) 8-14 AWG

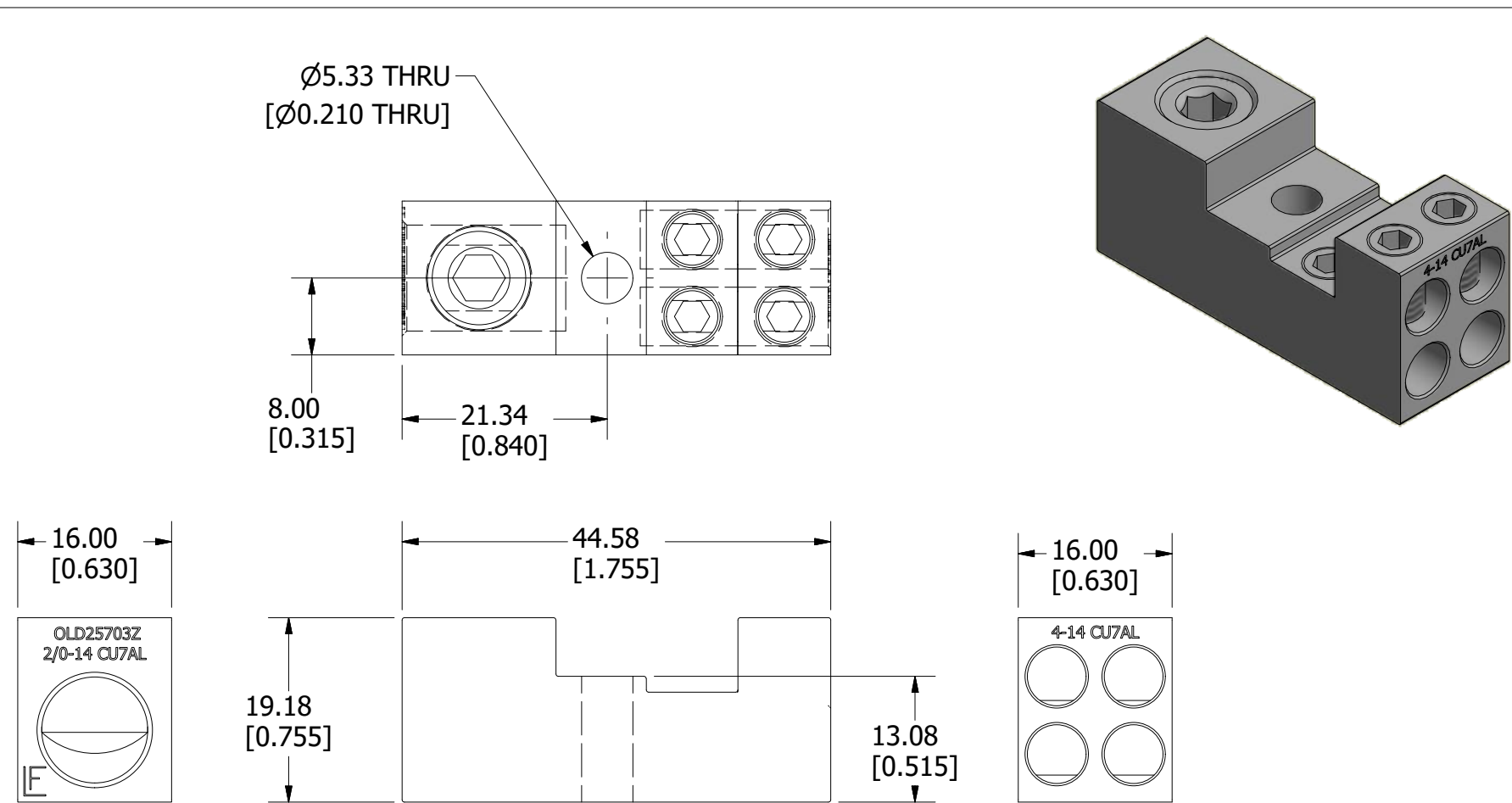
WIRE RANGE (LINE): 500MCM-4 AWG Cu/Al
SOLID/STRANDED

WIRE RANGE (LOAD): 2/0-14 AWG Cu/Al
SOLID/STRANDED

FASTENER: M6 (1/4)

APPROVALS: cULus (FILE NO. E502265)

●	DENOTES CRITICAL CHARACTERISTICS.		
CPK	DENOTES CPK DIMENSIONS, -MINIMUM CPK VALUE		
	DENOTES A CHARACTERISTIC THAT PROVIDES AN INDICATION OF PROCESS PERFORMANCE. PROCEDURE FOR MEASUREMENT AND TRACKING TO BE DEFINED IN LITTELFUSE INSPECTION INSTRUCTIONS.		
CP	DENOTES CP DIMENSIONS, -MINIMUM CP VALUE MUST BE WITHIN THE DIMENSIONAL LIMITATIONS SHOWN ON DRAWING AND INITIALLY LOCATED TO ALLOW FOR MAXIMUM TOOL LIFE.		
MATL SPEC		FINISH	
DRW myork	DATE 8/17/2018	SCALE NTS	FINISH GOOD WT GRAMS/PIECE
UNLESS OTHERWISE SPECIFIED, DIMENSIONS ARE IN MILLIMETERS, DIMENSIONS IN BRACKETS [] ARE INCHES DIMENSIONING AND DO NOT INCLUDE PLATING. TOLERANCING TO BE INTERPRETED IN ACCORDANCE WITH ANSI Y14.5M-1994			
3RD ANGLE PROJECTION 			
TITLE WCL010 OUTLINE			
 Littelfuse® CHICAGO, ILLINOIS 60631		REVISION B	DRWG NO. OL-WCL010
		SHEET 1 OF 1	



REVISION		
REV	DATE	DESCRIPTION
A	9/19/18	519868GCP - RELEASE PER EM3052 MRY
B	10/26/20	522955ECP/D - ADD MOUNTING HOLE DIMENSIONS MRY

SPECIFICATIONS:

VOLTAGE RATING: 600V

AMPERE RATING: 175 AMP CU; 135 AMP AL

SUGGESTED TORQUE (LINE): 13.6 N-m (120 IN-LBS) 2/0-6 AWG
4.5 N-m (40 IN-LBS) 8-14 AWG


SUGGESTED TORQUE (LOAD): 4 N-m (35 IN-LBS) 4-14 AWG

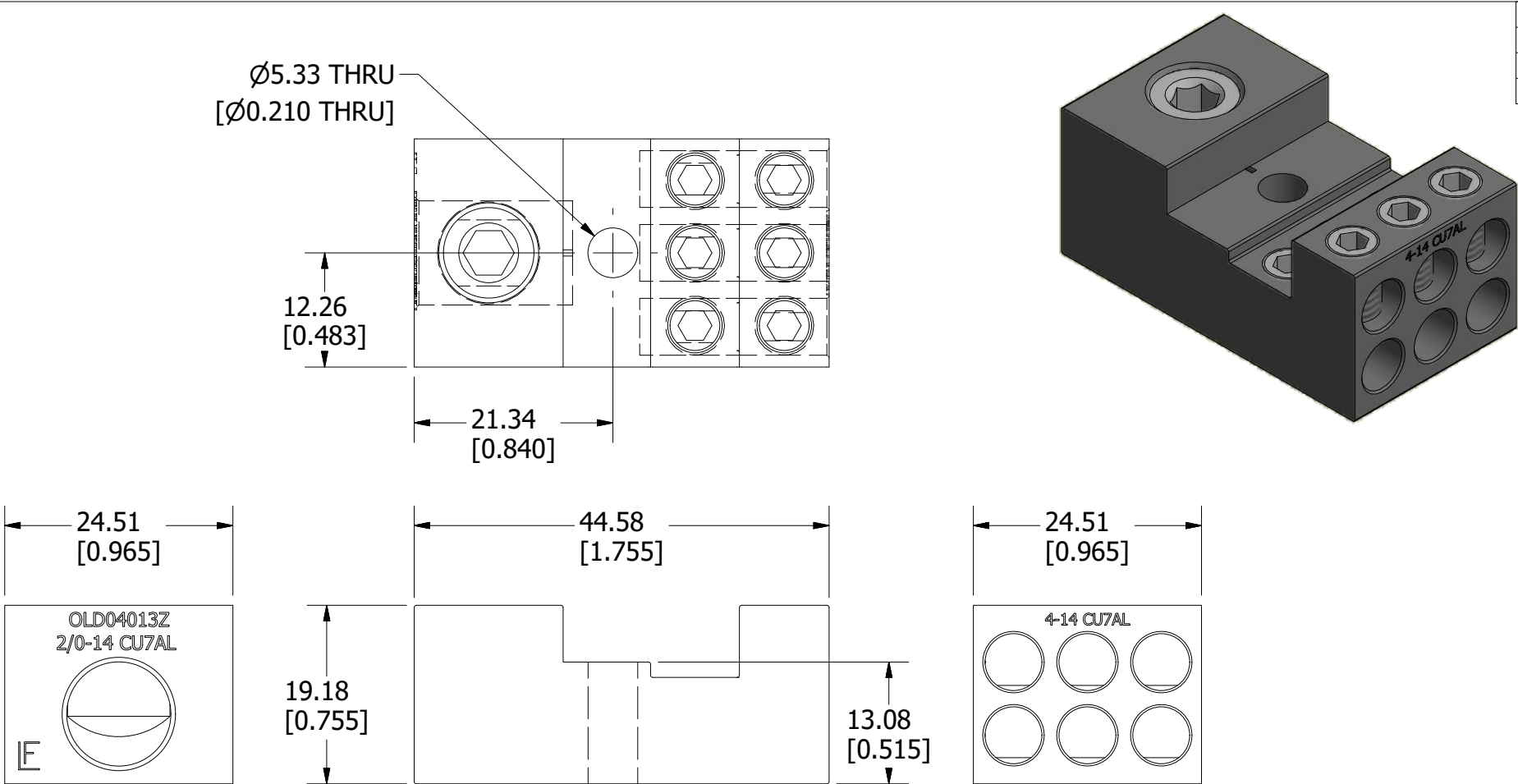
WIRE RANGE (LINE): 2/0-14 AWG Cu/Al
SOLID/STRANDED

WIRE RANGE (LOAD): 4-14 AWG Cu/Al
SOLID/STRANDED

FASTENER: M5 (#10)

APPROVALS: cULus (FILE NO. E502265)

●	DENOTES CRITICAL CHARACTERISTICS.		
CPK	DENOTES CPK DIMENSIONS, -MINIMUM CPK VALUE		
ST	DENOTES A CHARACTERISTIC THAT PROVIDES AN INDICATION OF PROCESS PERFORMANCE. PROCEDURE FOR MEASUREMENT AND TRACKING TO BE DEFINED IN LITTELFUSE INSPECTION INSTRUCTIONS.		
CP	DENOTES CP DIMENSIONS, -MINIMUM CP VALUE MUST BE WITHIN THE DIMENSIONAL LIMITATIONS SHOWN ON DRAWING AND INITIALLY LOCATED TO ALLOW FOR MAXIMUM TOOL LIFE.		B
MATL SPEC		FINISH	
DRW myork	DATE 8/17/2018	SCALE NTS	FINISH GOOD WT GRAMS/PIECE
UNLESS OTHERWISE SPECIFIED, DIMENSIONS ARE IN MILLIMETERS, DIMENSIONS IN BRACKETS [] ARE INCHES DIMENSIONING AND DO NOT INCLUDE PLATING. TOLERANCING TO BE INTERPRETED IN ACCORDANCE WITH ANSI Y14.5M-1994			
3RD ANGLE PROJECTION			
			
TITLE WCL011 OUTLINE			
 Littelfuse® CHICAGO, ILLINOIS 60631		REVISION B	DRWG NO. OL-WCL011
		SHEET 1 OF 1	



REVISION		
REV	DATE	DESCRIPTION
A	9/19/18	519868GCP - RELEASE PER EM3052 MRY
B	10/26/20	522955ECP/D - ADD MOUNTING HOLE DIMENSIONS MRY

SPECIFICATIONS:

VOLTAGE RATING: 600V

AMPERE RATING: 175 AMP CU; 135 AMP AL

SUGGESTED TORQUE (LINE): 13.6 N-m (120 IN-LBS) 2/0-6 AWG
4.5 N-m (40 IN-LBS) 8-14 AWG

SUGGESTED TORQUE (LOAD): 4 N-m (35 IN-LBS) 4-14 AWG

WIRE RANGE (LINE): 2/0-14 AWG Cu/Al
SOLID/STRANDED

WIRE RANGE (LOAD): 4-14 AWG Cu/Al
SOLID/STRANDED

FASTENER: M5 (#10)

APPROVALS: cULus (FILE NO. E502265)

●	DENOTES CRITICAL CHARACTERISTICS.			
CPK	DENOTES CPK DIMENSIONS, -MINIMUM CPK VALUE			
ST	DENOTES A CHARACTERISTIC THAT PROVIDES AN INDICATION OF PROCESS PERFORMANCE. PROCEDURE FOR MEASUREMENT AND TRACKING TO BE DEFINED IN LITTELFUSE INSPECTION INSTRUCTIONS.			
CP	DENOTES CP DIMENSIONS, -MINIMUM CP VALUE MUST BE WITHIN THE DIMENSIONAL LIMITATIONS SHOWN ON DRAWING AND INITIALLY LOCATED TO ALLOW FOR MAXIMUM TOOL LIFE.		B	
MATL SPEC		FINISH		
DRW myork		DATE 8/17/2018	SCALE NTS	FINISH GOOD WT GRAMS/PIECE
UNLESS OTHERWISE SPECIFIED, DIMENSIONS ARE IN MILLIMETERS, DIMENSIONS IN BRACKETS [] ARE INCHES DIMENSIONING AND DO NOT INCLUDE PLATING. TOLERANCING TO BE INTERPRETED IN ACCORDANCE WITH ANSI Y14.5M-1994				
3RD ANGLE PROJECTION				
TITLE WCL012 OUTLINE				
		REVISION B	DRWG NO. OL-WCL012	SHEET 1 OF 1