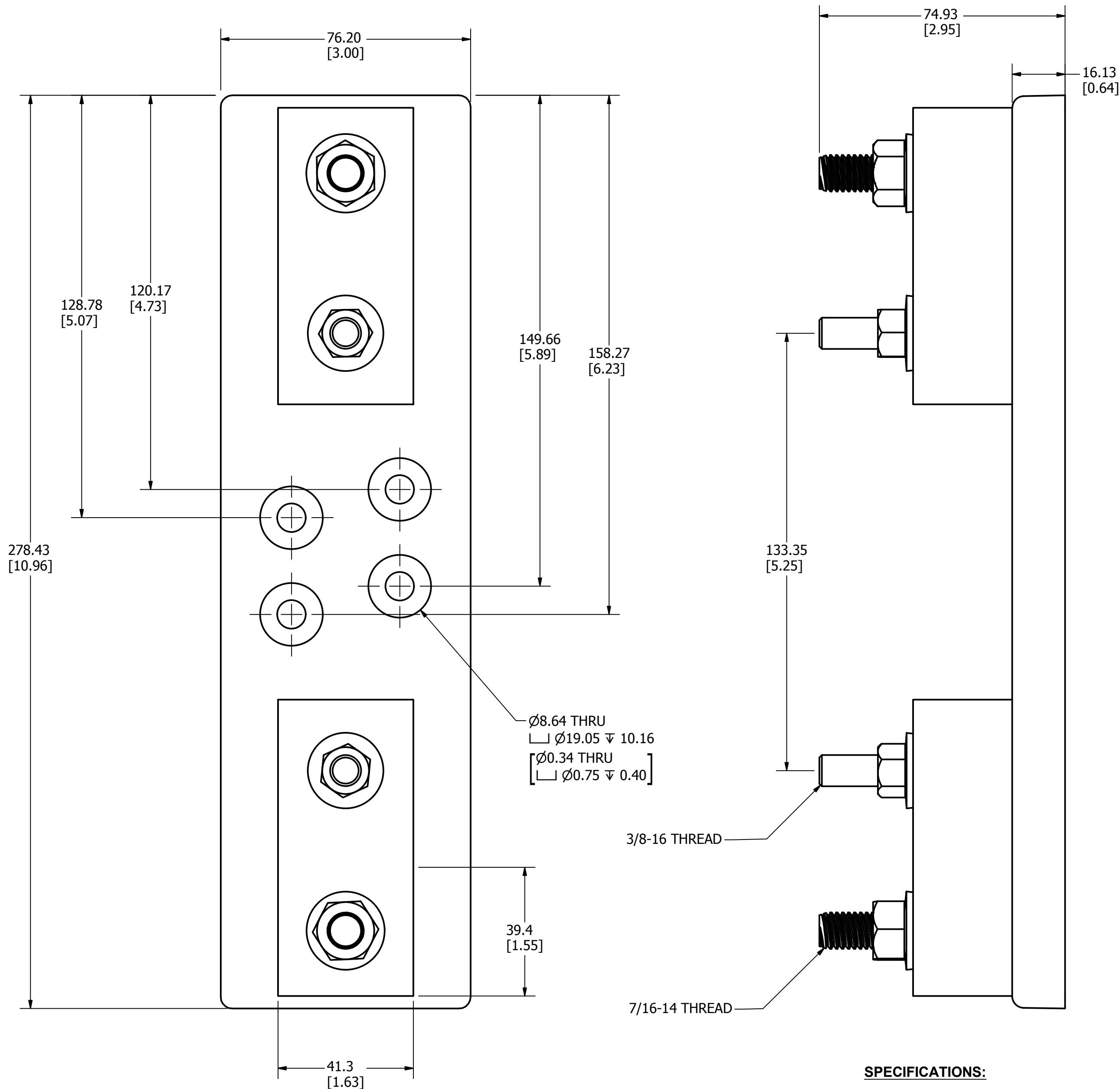


REVISION		
REV	DATE	DESCRIPTION
A	8/23/2011	503105ERP - RELEASE MRY
B	7/19/2012	505447ECP/C-CHG - UPDATE BASE TO CURRENT DESIGN -TV
C	12/20/2012	507000ECP - ADD DIMS AND THREAD CALLOUT -TV



**SPECIFICATIONS:**

**VOLTAGE RATING:** 1000VDC

**AMPERE RATING:** 400 AMPERES



**INTERRUPT RATING:** 10kA

**TERMINAL TYPE:** STUD

**TERMINAL TORQUE:** 22.6 N-m (200 in-lb)

**FUSE TORQUE:** 19.2 N-m (170 in-lb)

**APPROVALS:** UL LISTED (UL 4248-18)

●	DENOTES CRITICAL CHARACTERISTICS.		
CPK	DENOTES CPK DIMENSIONS, -MINIMUM CPK VALUE		
(ST)	DENOTES A CHARACTERISTIC THAT PROVIDES AN INDICATION OF PROCESS PERFORMANCE. PROCEDURE FOR MEASUREMENT AND TRACKING TO BE DEFINED IN LITTELFUSE INSPECTION INSTRUCTIONS.		
CP	DENOTES CP DIMENSIONS, -MINIMUM CP VALUE MUST BE WITHIN THE DIMENSIONAL LIMITATIONS SHOWN ON DRAWING AND INITIALLY LOCATED TO ALLOW FOR MAXIMUM TOOL LIFE.		
MATL SPEC		FINISH	
DRW TVESELSK	DATE 8/23/2011	SCALE NTS	FINISH GOOD WT GRAMS/PIECE
UNLESS OTHERWISE SPECIFIED, DIMENSIONS ARE IN MILLIMETERS, DIMENSIONS IN BRACKETS [ ] ARE INCHES DIMENSIONING AND DO NOT INCLUDE PLATING. TOLERANCING TO BE INTERPRETED IN ACCORDANCE WITH ANSI Y14.5M-1994			
3RD ANGLE PROJECTION			
			
TITLE LFJ104001STST OUTLINE			
 <b>Littelfuse®</b> CHICAGO, ILLINOIS 60631		REVISION C	DRWG NO. OL-LFJ104001STST
		SHEET 1 OF 1	