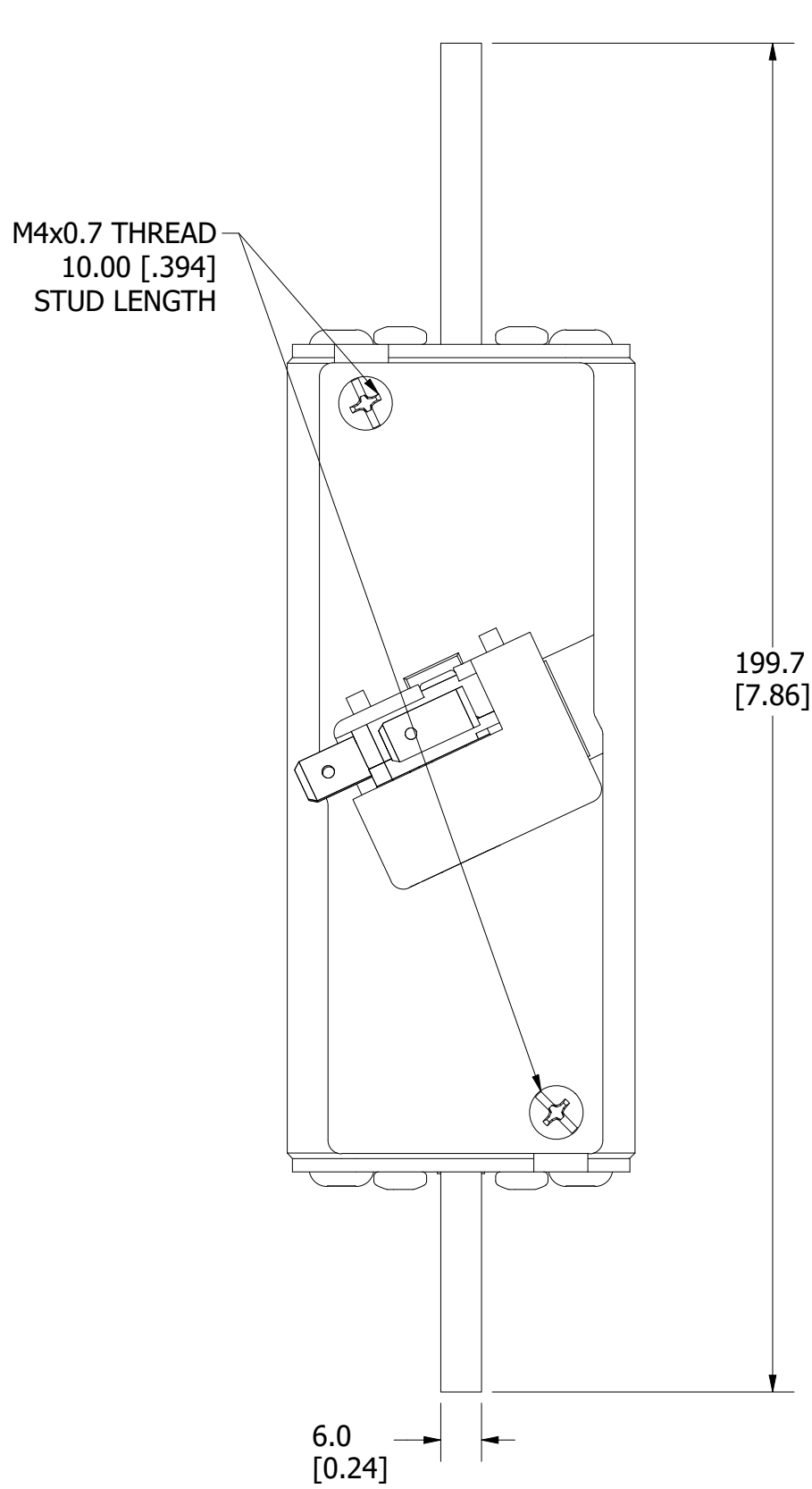
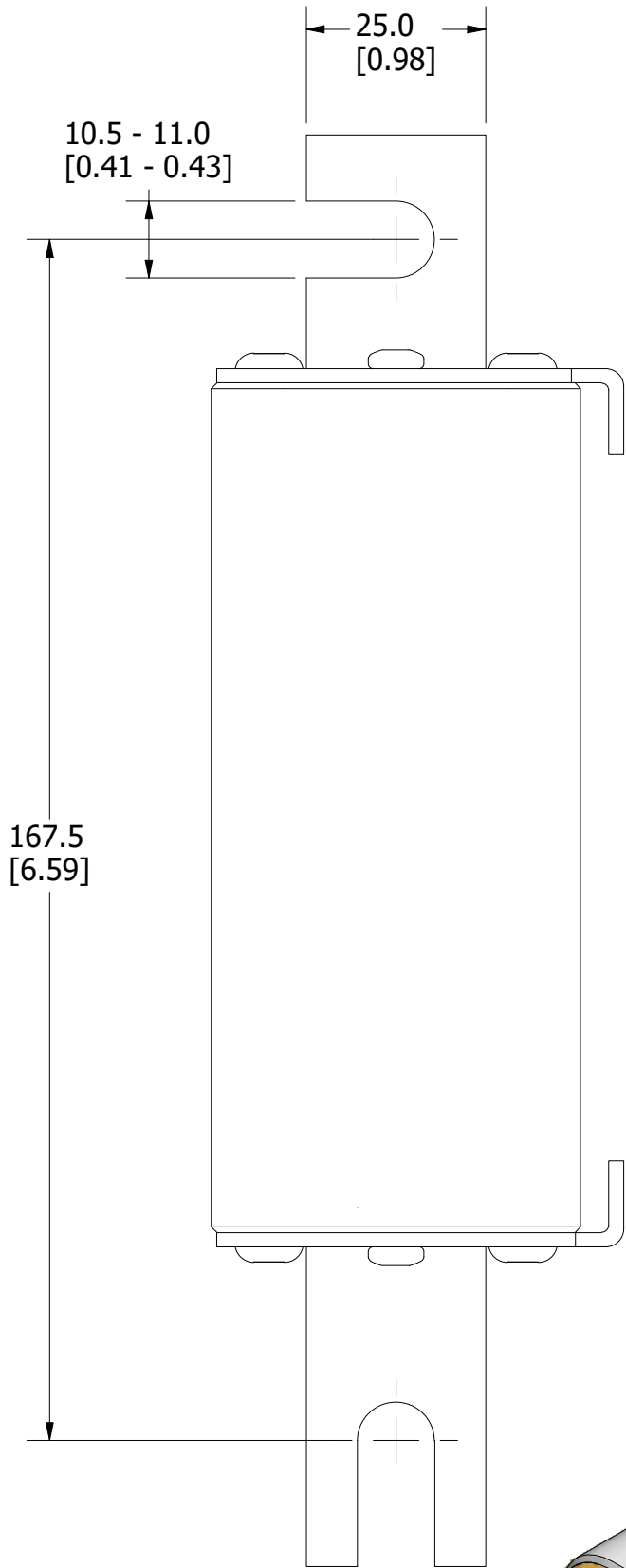
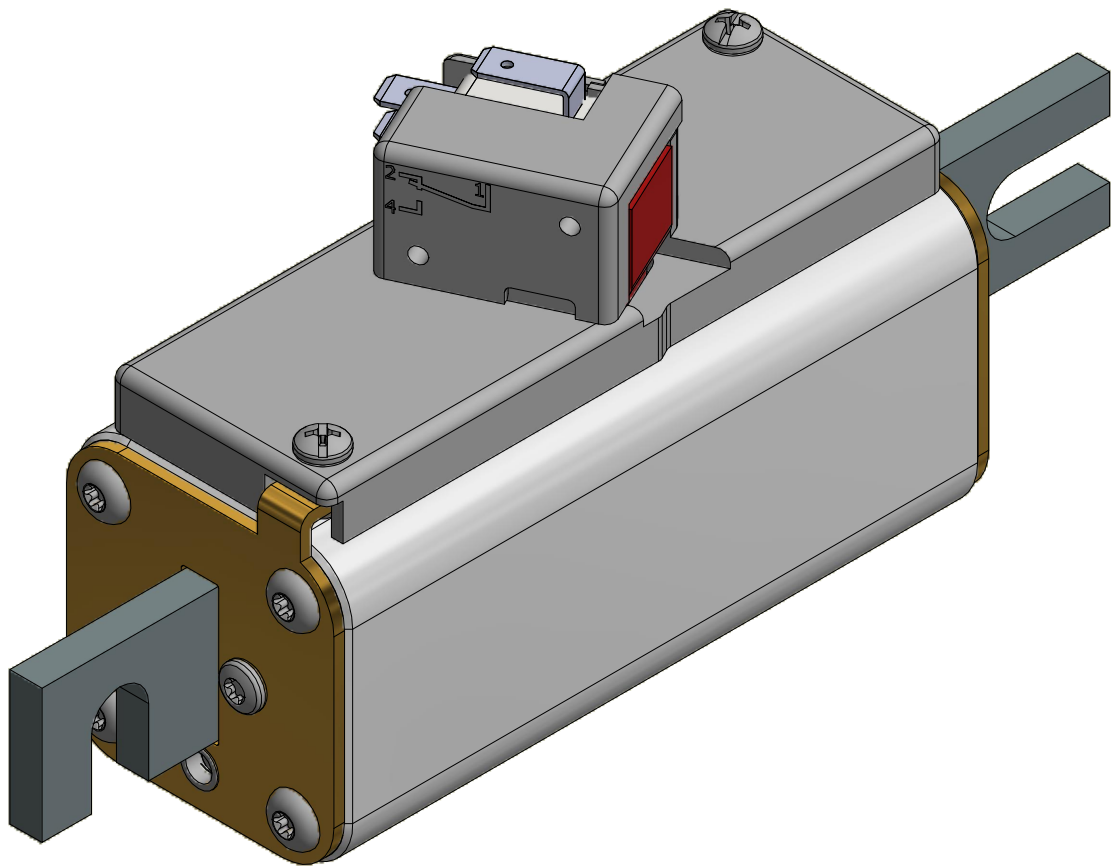


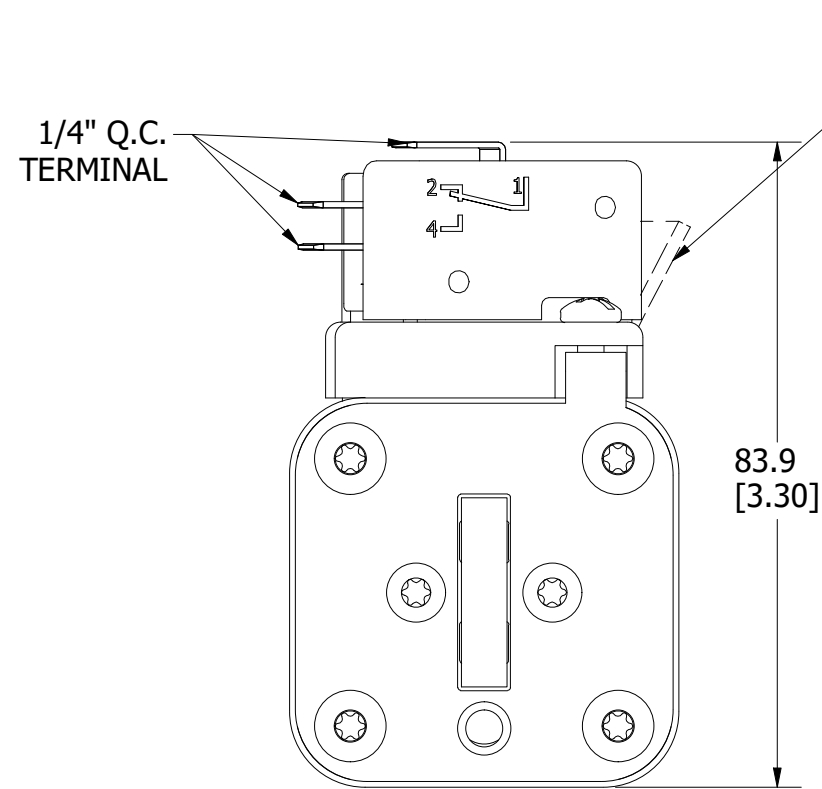
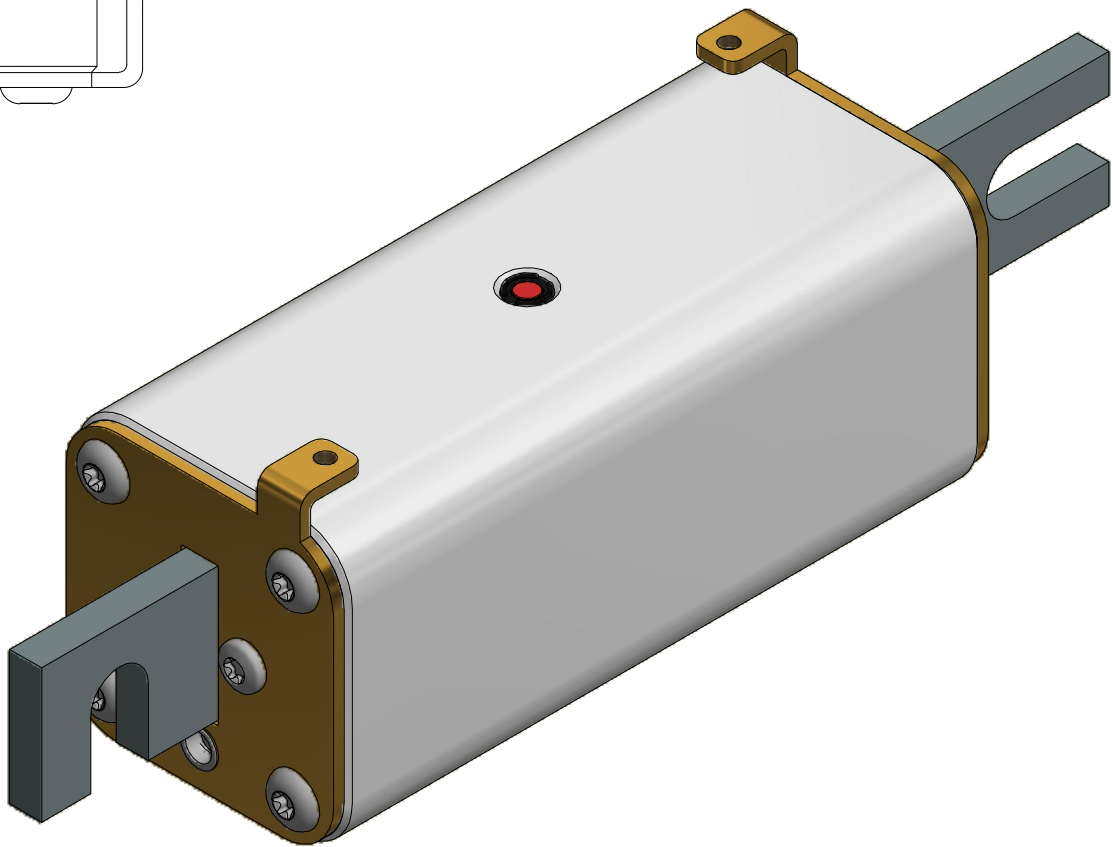
MOUNTING SPECS:
RECOMMENDED FASTENER: M10 OR 3/8"
TIGHTENING TORQUE (REFERENCE ONLY): 26Nm



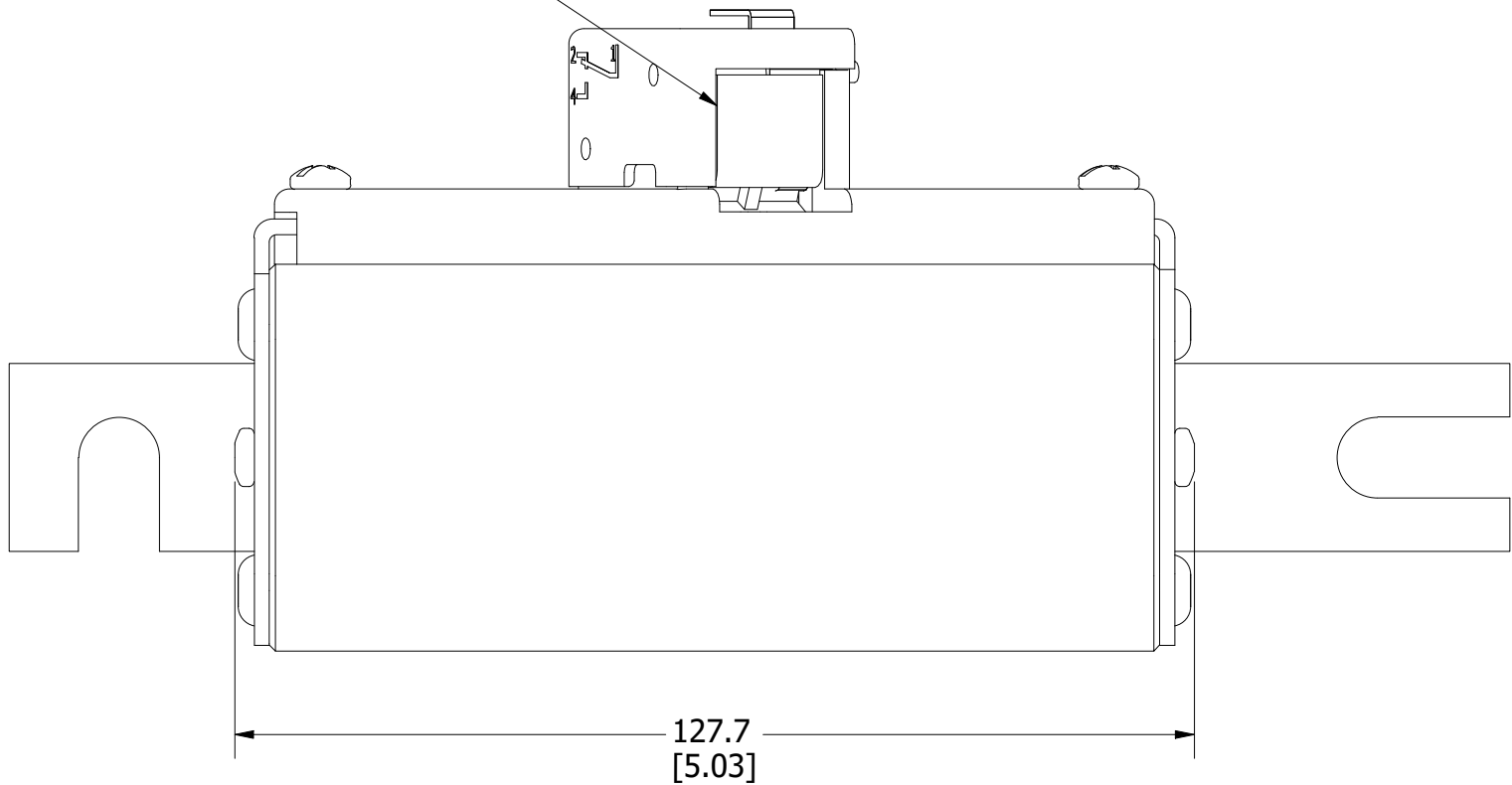
FUSE WITH MICROSWITCH



FUSE

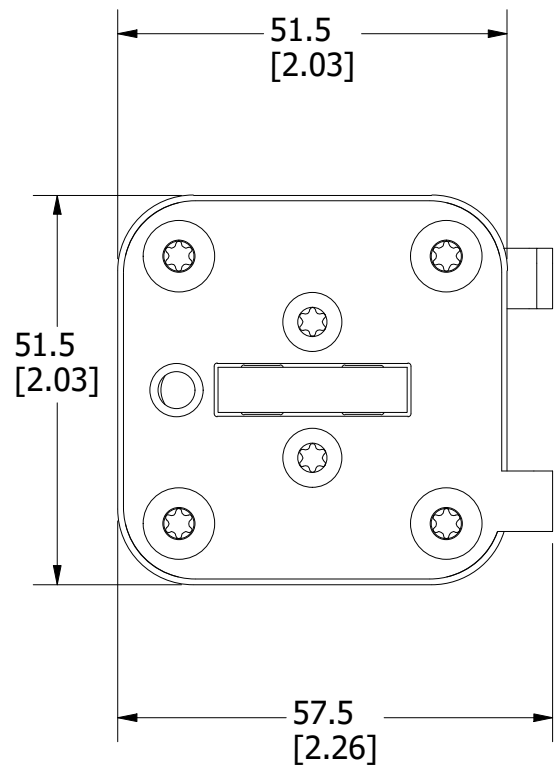


VISUAL INDICATOR




FUSE WITH MICROSWITCH

FOR REFERENCE ONLY



REVISION		
REV	DATE	DESCRIPTION
A	4/20/20	522234GCP - RELEASE MRY
B	10/25/23	526838ECP/D - ADD VIEW W/O MICROSWITCH MRY

<S>		CRITICAL CHARACTERISTIC FOR PART SAFETY/COMPLIANCE	
●		DENOTES CRITICAL CHARACTERISTICS.	
CPK		DENOTES CPK DIMENSIONS, -MINIMUM CPK VALUE	
ST		DENOTES A CHARACTERISTIC THAT PROVIDES AN INDICATION OF PROCESS PERFORMANCE. PROCEDURE FOR MEASUREMENT AND TRACKING TO BE DEFINED IN LITTELFUSE INSPECTION INSTRUCTIONS.	
CP		DENOTES CP DIMENSIONS, -MINIMUM CP VALUE MUST BE WITHIN THE DIMENSIONAL LIMITATIONS SHOWN ON DRAWING AND INITIALLY LOCATED TO ALLOW FOR MAXIMUM TOOL LIFE.	
MATL SPEC		FINISH	
DRW myork	DATE 4/14/2020	SCALE NTS	FINISH GOOD WT GRAMS/PIECE
UNLESS OTHERWISE SPECIFIED, DIMENSIONS ARE IN MILLIMETERS, DIMENSIONS IN BRACKETS [] ARE INCHES DIMENSIONING AND DO NOT INCLUDE PLATING. TOLERANCING TO BE INTERPRETED IN ACCORDANCE WITH ANSI Y14.5M-1994			
3RD ANGLE PROJECTION			
TITLE PSX SIZE 1XL DIN (DB) FUSE OUTLINE			
 Littelfuse® CHICAGO, ILLINOIS 60631		REVISION B	DRWG NO. SHEET 1 OF 1 OL-PSX1XLDB0000