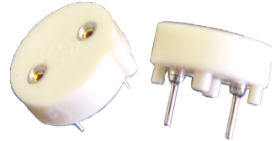


559/560 Series

Fuse Blocks for TE5/TR5 Type Fuses



559 Series Holder



560 Series Holder

Product Characteristics

| | 559 Series (Lead Free) | 560 Series |
|-------------------------------|---|---|
| Compatible Fuses | TR5/TE5 | TR5/TE5 |
| Materials | Holder: Black Thermoplastic, UL94 V-0 Metal Parts: Copper alloy; solderable tinned | Holder: Thermoplastic, UL 94 V-0 |
| Electrical Data (23°C) | Rated Voltage: 250V Max. Current/Power: 6.3 A / 1.6 W | |
| Mounting | PC Board, 7.18 mm pin spacing | PC Board, 5.08 mm pin spacing |
| Solderability | max. 260 °C, 10 s (Wave) | |
| Minimum Cross Section | Conducting path - 0.1 mm ² | |
| Unit Weight | 0.63 g | 0.4 g |
| Ambient Temperature | -40 °C to +85 °C | |

Additional Information

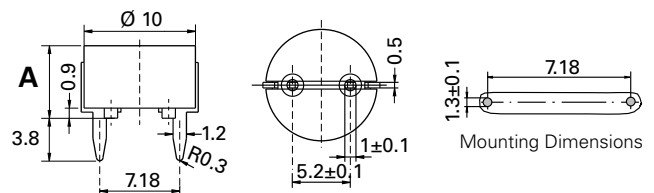
Resources
559 SeriesAccessories
559 SeriesSamples
559 SeriesResources
560 SeriesAccessories
560 SeriesSamples
560 Series

Ordering Information

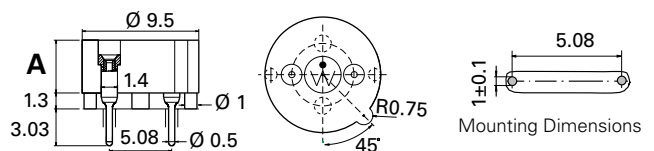
| Ordering Number | "A" Height Options | Packaging |
|-----------------|--------------------|---------------|
| 55900000001 | 6.5 mm (code 0001) | 1000 Pcs Bulk |
| 55900008011 | 10 mm (code 8011) | 100 Pcs Bulk |
| 56000001319 | 3.0 mm (code 1319) | 500 Pcs Bulk |
| 56000001009 | 4.3 mm (code 1009) | 500 Pcs Bulk |
| 56000001019 | 4.3 mm (code 1019) | 1000 Pcs Bulk |

Dimensions (Units in mm)

559 Series



560 Series



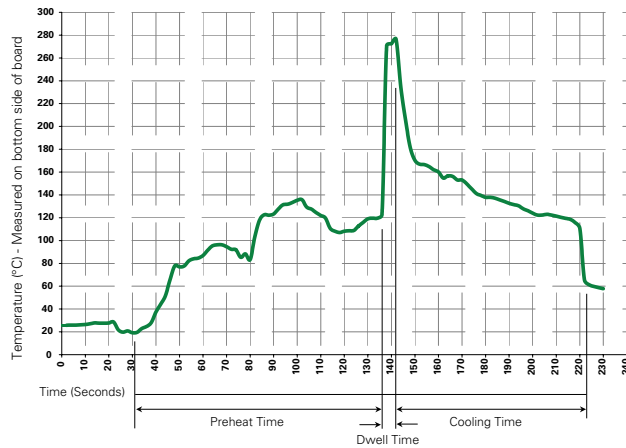
Agency Approvals

| Agency | Agency File Number | |
|--------|--------------------|------------|
| | 559 Series | 560 Series |
| | N/A | 40041024 |
| | N/A | E14721 |

559/560 Series

Fuse Blocks for TE5/TR5 Type Fuses

Soldering Parameters - Wave Soldering



Recommended Process Parameters:

| Wave Parameter | Lead-Free Recommendation |
|--|-----------------------------------|
| Preheat: (Depends on Flux Activation Temperature) | (Typical Industry Recommendation) |
| Temperature Minimum: | 100° C |
| Temperature Maximum: | 150° C |
| Preheat Time: | 60-180 seconds |
| Solder Pot Temperature: | 280° C Maximum |
| Solder Dwell Time: | 2-5 seconds |

Recommended Hand-Solder Parameters:

Solder Iron Temperature: 350° C +/- 5°C

Heating Time: 5 seconds max.

Note: These devices are not recommended for IR or Convection Reflow process.

Disclaimer Notice - Information furnished is believed to be accurate and reliable. However, users should independently evaluate the suitability of and test each product selected for their own applications. Littelfuse products are not designed for, and may not be used in, all applications. Read complete Disclaimer Notice at: www.littelfuse.com/disclaimer-electronics.