

# 800/801/802/803 Series

## Panel Mount Enclosed Fuse Holders



### Additional Information



Resources  
800 Series



Accessories  
800 Series



Samples  
800 Series



Resources  
801 Series



Accessories  
801 Series



Samples  
801 Series



Resources  
802 Series



Accessories  
802 Series



Samples  
802 Series



Resources  
803 Series



Accessories  
803 Series



Samples  
803 Series

### Agency Approvals

| Agency             | Part Number |          |            |        |         |        |
|--------------------|-------------|----------|------------|--------|---------|--------|
|                    | 800         | 800 01   | 800-25     | 801    | 802     | 803 01 |
| Agency File Number |             |          |            |        |         |        |
|                    | 122016*     | 123336** | N/A        | N/A    | N/A     | 6914** |
|                    | E70164*     |          |            |        |         |        |
|                    | 47574*      | 47574**  | N/A        | 47574* | 47574** |        |
|                    | N/A         | N/A      | J 50594683 | N/A    | N/A     | N/A    |

\* - Certification includes both 815 and 816 caps

\*\* - Certification includes 816 cap only

### Product Characteristics

| Series                      | 800                                                                                                     | 800 01<br>800-25                                                                       | 801/802                                                | 803 01                                                                               |
|-----------------------------|---------------------------------------------------------------------------------------------------------|----------------------------------------------------------------------------------------|--------------------------------------------------------|--------------------------------------------------------------------------------------|
| Compatible Fuses            | 5x20mm<br>6.3x32mm                                                                                      | 6.3x32mm                                                                               | 5x20mm<br>6.3x32mm                                     | 6.3x32mm                                                                             |
| Materials                   | Holder/Cap: Black Thermoplastic, UL94 V-0                                                               |                                                                                        |                                                        | Clamp spring:<br>non-corrosion metal, untreated                                      |
|                             | Metal Parts: Copper alloy, corrosion protected                                                          |                                                                                        |                                                        |                                                                                      |
| Electrical Data (23°C)      | Terminals: Solderable, tinned                                                                           |                                                                                        |                                                        |                                                                                      |
|                             | Rated Voltage: 250V                                                                                     | Rated Voltage: 500V                                                                    | Rated Voltage: 250V                                    | Rated Voltage: 500V                                                                  |
|                             | Rated Current:<br>6.3A (800+815-VDE)<br>10A (800+816-VDE)<br>16A (UL/CSA)                               | Rated Current:<br>10A (800+816 - VDE)<br>16A (UL)<br>10A (800-25 +816-TUV)<br>16A (UL) | Rated Current:<br>16A (UL/CSA)                         | Rated Current:<br>10A (VDE)<br>16A (UL/CSA)                                          |
|                             | Rated Power: 2.5W (VDE)                                                                                 |                                                                                        |                                                        | Rated Power:<br>4W (VDE)                                                             |
| Mounting                    | 12.7mm diameter D-hole or double D-hole Admissible torque on plastic hex nut is 1.2Nm                   |                                                                                        |                                                        | Pluggable with clamping spring in 12.7mm diam v eter D-hole (panel of 0.75mm - 3 mm) |
| Terminals                   | Solderable or 4.8mm quick connect-fits 0.5mm tab / 6.3 mm for 800-25                                    |                                                                                        |                                                        |                                                                                      |
| Electronic Shock Protection | PC2 (IEC 60127-6)                                                                                       |                                                                                        |                                                        |                                                                                      |
| Ingress Protection          | IP 40 (IEC 60529)                                                                                       |                                                                                        |                                                        |                                                                                      |
| Operating Temperature       | -25°C to +70°C                                                                                          |                                                                                        |                                                        |                                                                                      |
| Climatic Test               | -25°C/+70°C/21 days (IEC 60068-2-1...3)                                                                 |                                                                                        |                                                        |                                                                                      |
| Stock Conditions            | +10°C to +60°C relative humidity ≤ 75% yearly average, without dew, maximum value for 30 days - 95%     |                                                                                        |                                                        |                                                                                      |
| Vibration Resistance        | 24 cycles at 15 min. each (IEC 60068-2-6) 10 - 60Hz at 0.75mm amplitude 60 - 2000Hz at 10g acceleration |                                                                                        |                                                        | NA                                                                                   |
| Contact Resistance          | ≤ 5mΩ                                                                                                   |                                                                                        |                                                        |                                                                                      |
| Dielectric Strength         | > 1.5 kV                                                                                                |                                                                                        |                                                        |                                                                                      |
| Impulse Voltage             | 4 kV, 50 Hz, 1 min., dry                                                                                |                                                                                        |                                                        |                                                                                      |
| Insulation Resistance       | > 103 MΩ (500 VDC, 1 min.)                                                                              |                                                                                        |                                                        |                                                                                      |
| Solderability               | 235°C, 3 sec. (Wave)<br>350°C, 1 sec. (Soldering Iron)                                                  |                                                                                        | 235°C, 2 sec. (Wave)<br>350°C, 1 sec. (Soldering Iron) | 235°C, 2 sec. (Wave)<br>350°C, 3 sec. (Soldering Iron)                               |
|                             | Solder Heat Resistance<br>260°C, 5 sec. (IEC 60068-2-20)                                                |                                                                                        |                                                        |                                                                                      |
| Min. Cross Section          | Conductor - 2.5mm <sup>2</sup>                                                                          |                                                                                        |                                                        |                                                                                      |
| Marking                     | 800, 250V, Approvals                                                                                    | 800 01, 500V, Approvals<br>800 25, 500V, Approvals                                     | Series, 250V, Approvals                                | 803, 500V, Approvals                                                                 |
| Unit Weight                 | 4.7g (Holder)<br>2.5g (Cap)                                                                             |                                                                                        | 5.0g (801/802)<br>2.5g (815/816)                       | 4.9g (803)<br>2.0g (816)                                                             |

Note: Refer to [Fuseology](#) for information on proper fuseholder re-rating

### Ordering Information

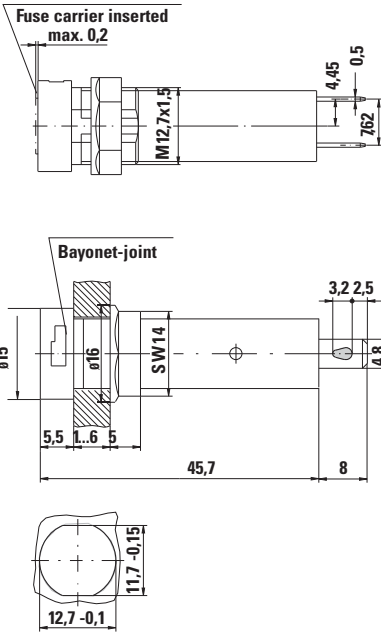
|           |                                                                             |                            |                            |             |
|-----------|-----------------------------------------------------------------------------|----------------------------|----------------------------|-------------|
| Holders   | 80000000005                                                                 | 80000000105<br>80000002505 | 80100000005<br>80200000005 | 80300000105 |
| Caps      | For 5x20mm fuse: <b>81500000005</b><br>For 6.3x32mm fuse <b>81600000005</b> |                            |                            |             |
| Packaging | Bulk 100 Pcs all items listed above                                         |                            |                            |             |

# 800/801/802/803 Series

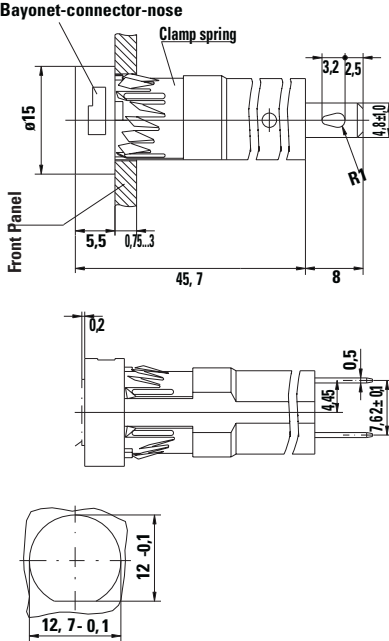
## Panel Mount Enclosed Fuse Holders

Dimensions (millimeters)

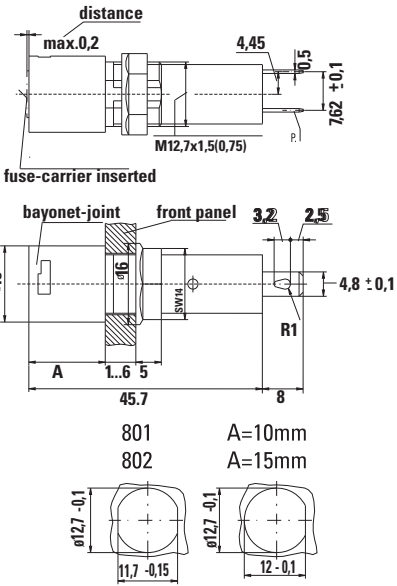
800/800 01 Series



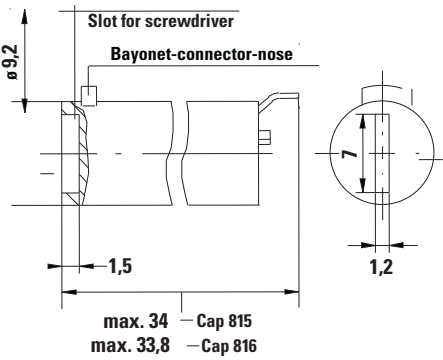
803 01 Series



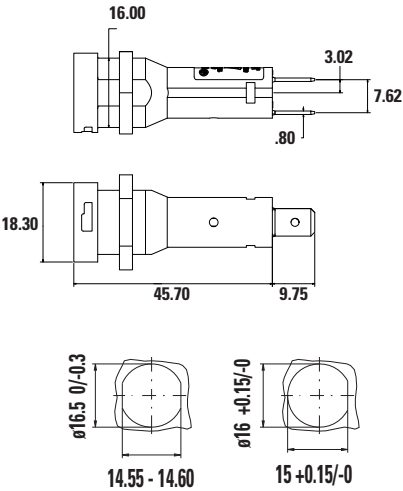
801/802 Series



815/816 Cap



800-25 Series



**Disclaimer Notice** - Information furnished is believed to be accurate and reliable. However, users should independently evaluate the suitability of and test each product selected for their own applications. Littelfuse products are not designed for, and may not be used in, all applications. Read complete Disclaimer Notice at: [www.littelfuse.com/disclaimer-electronics](http://www.littelfuse.com/disclaimer-electronics).