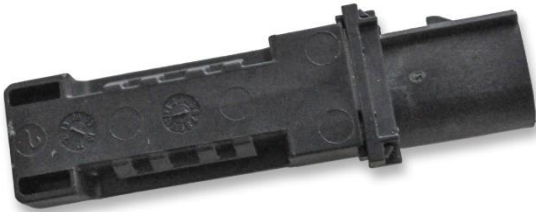


Automotive Sensor Products

Clutch Position Sensor



General Description

The purpose of the Clutch Position Sensor is to interact with a magnet fixed to the master cylinder piston to indicate the position of the clutch pedal.

Operation

Basic Principle

The clutch position sensor is used to detect clutch engagement.

Packaging Options

Custom packaging can be provided to meet any need, please contact Littelfuse Engineering for details.

Features

- ♦ Magnetically operated position sensor
- ♦ Integrated in clutch master cylinder
- ♦ Normally open contact
- ♦ Easy to Assemble (Snap on)
- ♦ Choice of circuitry for output voltages
- ♦ Choice of connectors and terminals

Benefits

- ♦ Robust construction makes this sensor well suited to harsh environments
- ♦ No standby power required
- ♦ Hermetically sealed, magnetically operated contacts give excellent life and reliability

Applications

- ♦ Engine Start Systems
- ♦ Cruise Control Systems
- ♦ Clutch Position

Automotive Sensor Products

Functional Characteristics

Parameter			
Type			
Reed Switch Sensor			
Contact			Normally Open
Electrical			
Voltage	Switching	Max.	200V _{dc} / 125V _{ac} RMS 250 V _{dc} 0.5A _{dc} / 0.35A _{ac} RMS 1.0A _{dc} / 0.7A _{ac} RMS
	Breakdown	Min.	
Current	Switching	Max.	
	Carry	Max.	
Rating	Power	Max.	10W
Resistance	Contact, Initial	Max.	0.12 Ω
	Insulation	Max.	10 ¹⁰ Ω
Capacitance	Contact	Typ.	0.2pF
Environmental/Mechanical			
Temperature	Operating	Celsius	-40° to +125°
	Storage	Celsius	-40° to +125°
Shock	11ms Sine	Max.	30g
Vibration	2000Hz	Max.	35g

Littelfuse

Website: www.littelfuse.com
 Sales Support: ALL_Autosensors_Sales@littelfuse.com
 Technical Support: ALL_Autosensors_Tech@littelfuse.com

Information provided by Littelfuse is believed to be accurate and reliable.

All rights reserved. Trademarks and registered trademarks are the property of their respective owners.

Littelfuse products are designed for specific applications and should not be used for any purpose (including, without limitation, automotive applications) not expressly set forth in applicable Littelfuse product documentation. Warranties granted by Littelfuse shall be deemed void for products used for any purpose not expressly set forth in applicable Littelfuse product documentation. Littelfuse shall not be liable for any claims or damages arising out of products used in applications not expressly intended by Littelfuse as set forth in applicable Littelfuse product documentation.