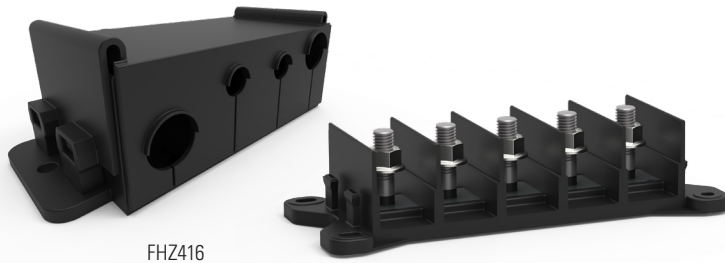


Installation Instructions

ZCASE® 4P-5P Series

400 A Bolt-Down Fuse Holders

Part Numbers: FHZ416, FHZ415



FHZ416

FHZ415

Description

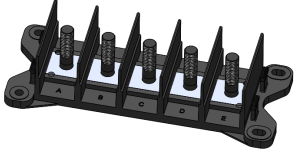
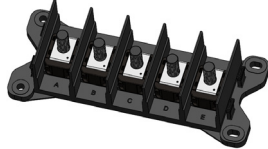
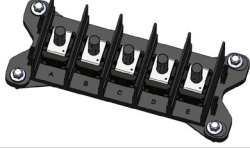
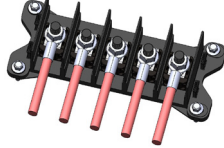

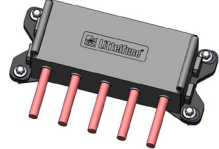
ZCASE® 4P-5P Series 400 A Bolt-Down Fuse Holders are four-position and five-position automotive fuse blocks that enable circuit-protected power distribution with ZCASE® fuses (sold separately). These DC power distribution blocks have thermoplastic bases and protective covers with UL 94 V-0 flammability ratings and have been tested to ISO 16750-3 standards for shock and vibration.

Installation

1. Remove the nuts from base.
2. Place the ZCASE fuses on the studs to match stud size and loads.
 - Remember when selecting fuse values the continuous current through a fuse should be calculated as 75% of the rated value of the fuse (200 A fuse should carry 150A max continuous current).
 - The total long term continuous current for all fuses should not exceed 400 A.
 - Intermittent loads such as motor start, starter or compressor should not exceed 600 A for 20 seconds.
3. Place ZCASE fuse holder into the mounting position and mark the location on the mounting surface for the mounting bolts. Drill four holes to accommodate the M6 Mounting hardware. Bolt the holder to the mounting surface with four M6 bolts torqued to 6~8Nm.
4. Place an appropriate sized output cable with an a terminal matched to the stud size on the top of the ZCASE fuses and put on an appropriate nuts on the isolated studs. Torque the nuts to 16Nm±2Nm for M10 studs. Be sure to hold the wire and terminal while applying torque to prevent twisting which can damage the fuse element.
5. Be sure that the output cables are routed so they have sufficient bend radius and are not at risk of being damaged or pinched. Lastly, make sure that all cables are strain relieved by being supported within 18" of the battery.
6. Assemble the cover onto base.

Ordering Information

| PART NUMBERS | DESCRIPTION |
|--------------|---|
| FHZ416 | 32 V 400 A Four-Position Bolt-Down Fuse Holder Base and Cover |
| FHZ415 | 80 V 400 A Five-Position Bolt-Down Fuse Holder Base |
| FHZ515 | Five-Position Fuse Holder Cover |

| | |
|--------|---|
| STEP 1 |  |
| STEP 2 |  |
| STEP 3 |  |
| STEP 4 |  |
| STEP 5 |  |
| STEP 6 |  |