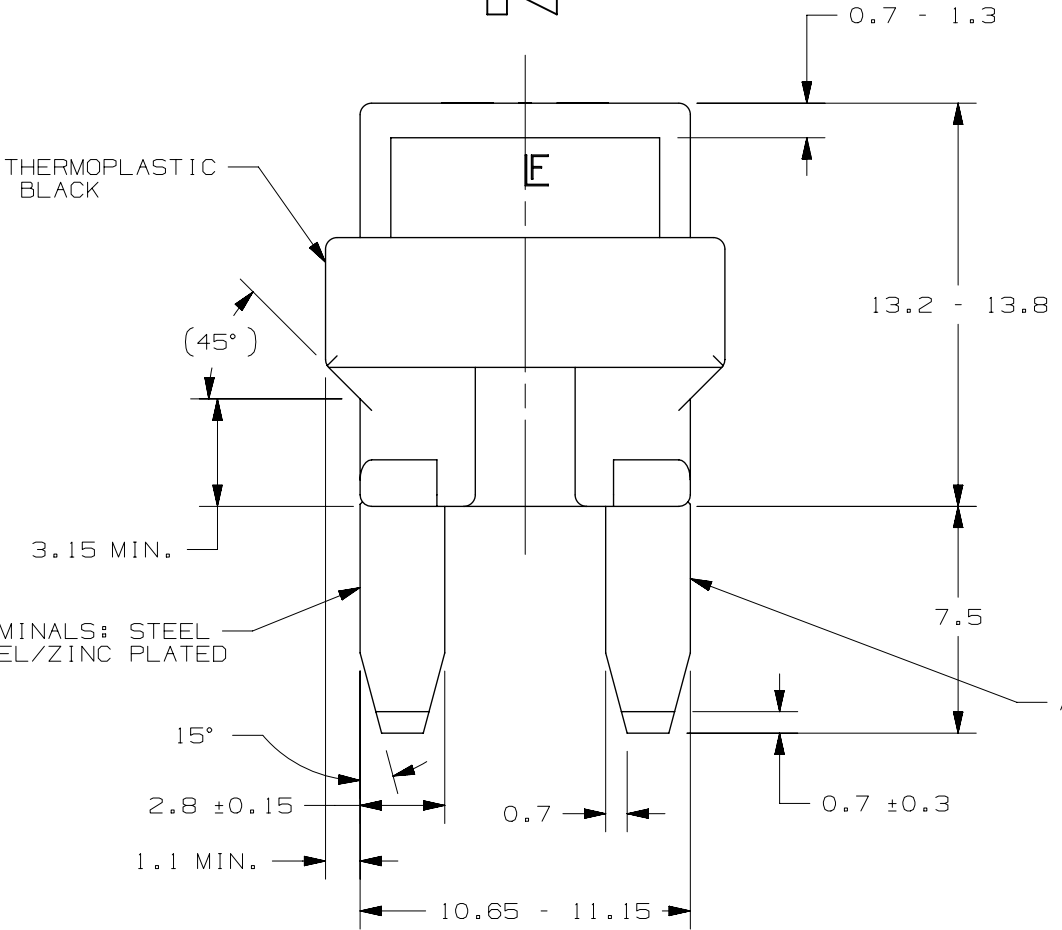


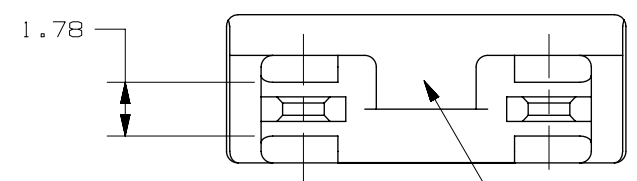
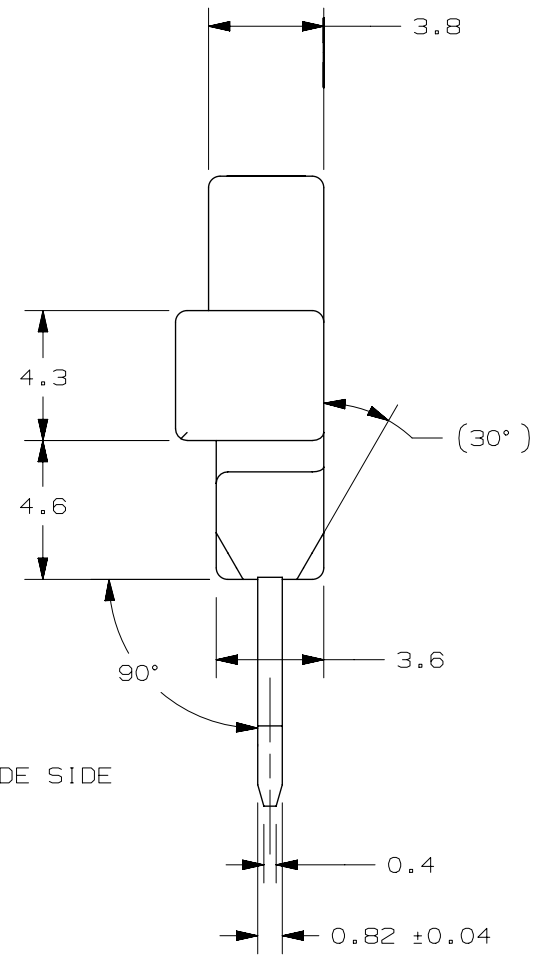
ORIENTATION NOTCH (SEE NOTE 2)

BODY: THERMOPLASTIC
COLOR: BLACK



TERMINALS: STEEL
NICKEL/ZINC PLATED

ANODE SIDE



ORIENTATION NOTCH (SEE NOTE 1)

NOTES:

1. DIODE: 1.0 AMP 400V P.I.V.
2. 1.0 STAMP MUST BE ORIENTATED TO READ AS SHOWN WITH ORIENTATION NOTCH DIRECTLY BELOW.

METRIC
ASSEMBLY

UNLESS OTHERWISE SPECIFIED, DIMENSIONS ARE IN MILLIMETERS.
DIMENSIONS IN BRACKETS [] ARE INCHES

UNLESS OTHERWISE SPECIFIED, DIMENSIONS DO NOT INCLUDE PLATING.

⊙ DENOTES CRITICAL CHARACTERISTICS.
CPK DENOTES CPK DIMENSIONS, -MINIMUM CPK VALUE
ST DENOTES A CHARACTERISTIC THAT PROVIDES AN INDICATION OF PROCESS PERFORMANCE. PROCEDURE FOR MEASUREMENT AND TRACKING TO BE DEFINED IN LITTELFUSE INSPECTION INSTRUCTIONS
CP DENOTES CP DIMENSIONS, -MINIMUM CP VALUE MUST BE WITHIN THE DIMENSIONAL LIMITATIONS SHOWN ON DRAWING AND INITIALLY LOCATED TO ALLOW FOR MAXIMUM TOOL LIFE

NO	COMPONENT NO	DESCRIPTION	QTY/M	U/M
BILL OF MATERIAL				

COPIES TO		MATERIAL SPEC		FINISH		SCALE		DRW DATE		CHK DATE		APPD DATE		GRAMS/PIECE	
1	9	18				1:1	04/07/09								
2	10	19				SUPER DR									
3	12	20													
4	13	21													
5	14	23													
6	15	33													
7	16	43													
8	17	53													
TOLERANCES UNLESS OTHERWISE SPECIFIED (REF. ISO 2768-mK)															
DIMENSION		0.5 - 3	3 - 6	6 - 30	30 - 120	120 - 400									
TOLERANCE		±0.1	±0.1	±0.2	±0.3	±0.5									
3RD ANGLE PROJECTION															
TITLE: MINI DIODE ASSEMBLY															
REVISION: DRWG. NO. OL-02400119P															
LITTELFUSE DES. PLAINES, ILLINOIS 60016															

LTR	DATE	REVISION	CHK	APD
A	04/07/09	000652ER-RELEASE	GMB	
B	11/30/11	503801ECA-CHANGE DIMENSIONS, SEE ECO OPL		
C	21/FEB/18	518932ECA-ADD ON DIMENSION 1.1 MIN. TO CLARIFY SPECIFICATION	OPL	