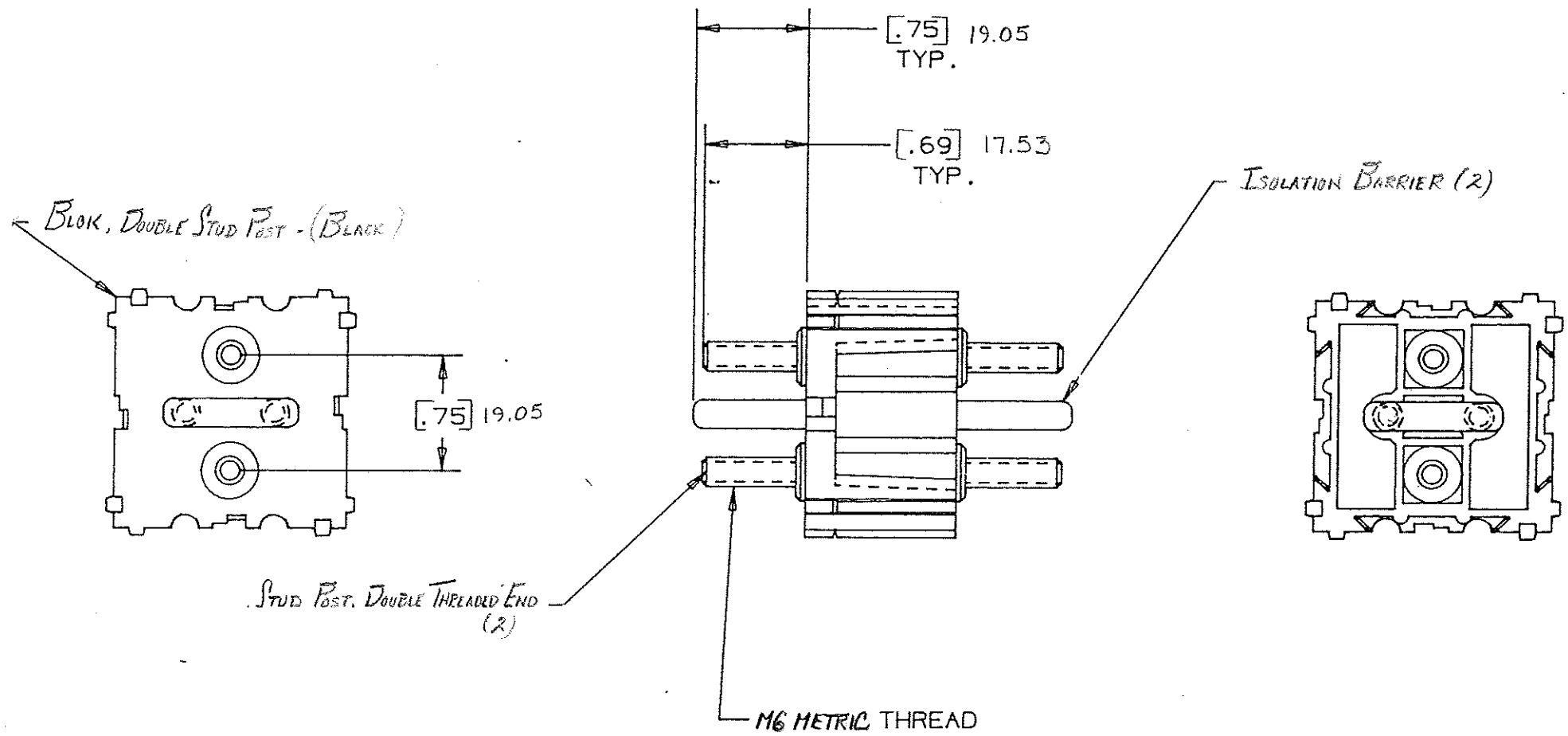


DRAWING NO.



CERTIFICATION OF  
COUNTRY OF ORIGIN  
REQUIRED

COPIES TO	18	MAT'L. SPEC. Nylon Color: Black	
	9	FINISH	SCALE
10	20	DR. Ges. Oct. 25, 94	SUPER. DR.
11	21	APPD. J. J. [Signature]	DATE 10-26-94
12	22	TOLERANCE UNLESS OTHERWISE SPECIFIED	
13	23	TWO PLACE DEC. ± .50mm [0.25]	
14	24	THREE PLACE DEC. ± .25mm [0.10]	
15	25	FRACTION ±	
16	26	ANGULAR ±	
17	27	TITLE STUD ASSEMBLY MODULE	
18	28	(A STUD W/ BARRIER)	
19	29	LBS./M	
20	30	LITTELFUSE	
21	31	800 E. NORTHWEST HIGHWAY	
22	32	DES PLAINES, ILLINOIS 60016	
23	33	DRWG. NO. G-03540538Z	
24	34		
25	35		
26	36		
27	37		
28	38		
29	39		
30	40		
31	41		
32	42		
33	43		
34	44		
35	45		
36	46		
37	47		
38	48		
39	49		
40	50		

LTR	REVISION	CHK.	APD.
A	05559 - RELEASED OCTOBER 25, 94 Ges.	Ges	AA
B	36644D - REVISED 11-20-94 KGL	Ges	Ges
C	36644D - CHG 2 PLACE TOLERANCE .010 TO: .020 3 PLACE TOLERANCE .020 TO: .010 2-16-95 JCU	Ges	Ges
D	36988C - ADD METRIC DIM. 7-19-95 RFR	Ges	Ges
E	37055D - CHANGE TITLE 8-19-95 JCU	TCB	Ca
F	37150D - CHANGE THREAD FROM M8 TO M6 11/12/95 Ges	Ges	Ges
G	000807ER - RE-INSTATE 10/09/09 J.U.		