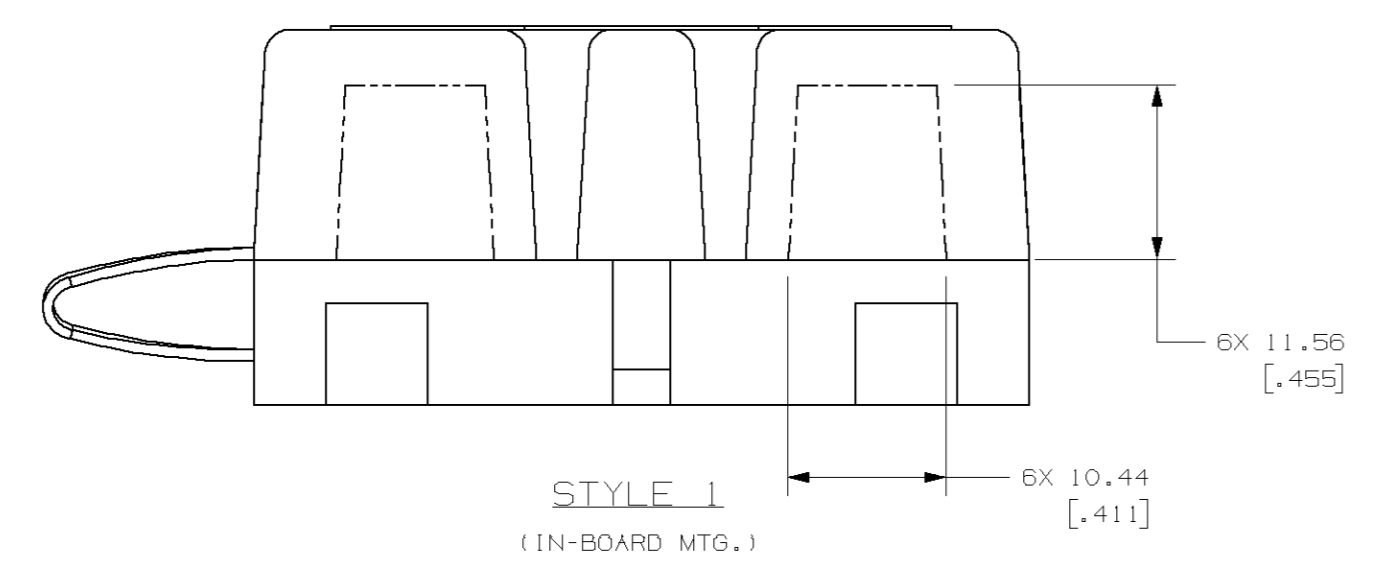
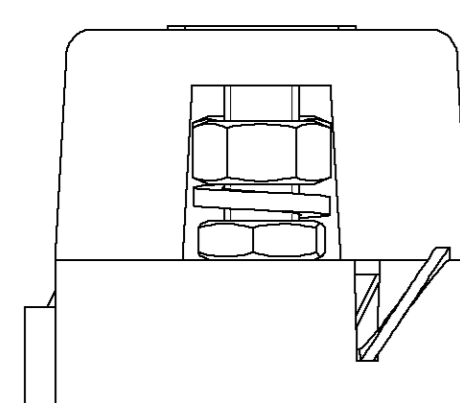
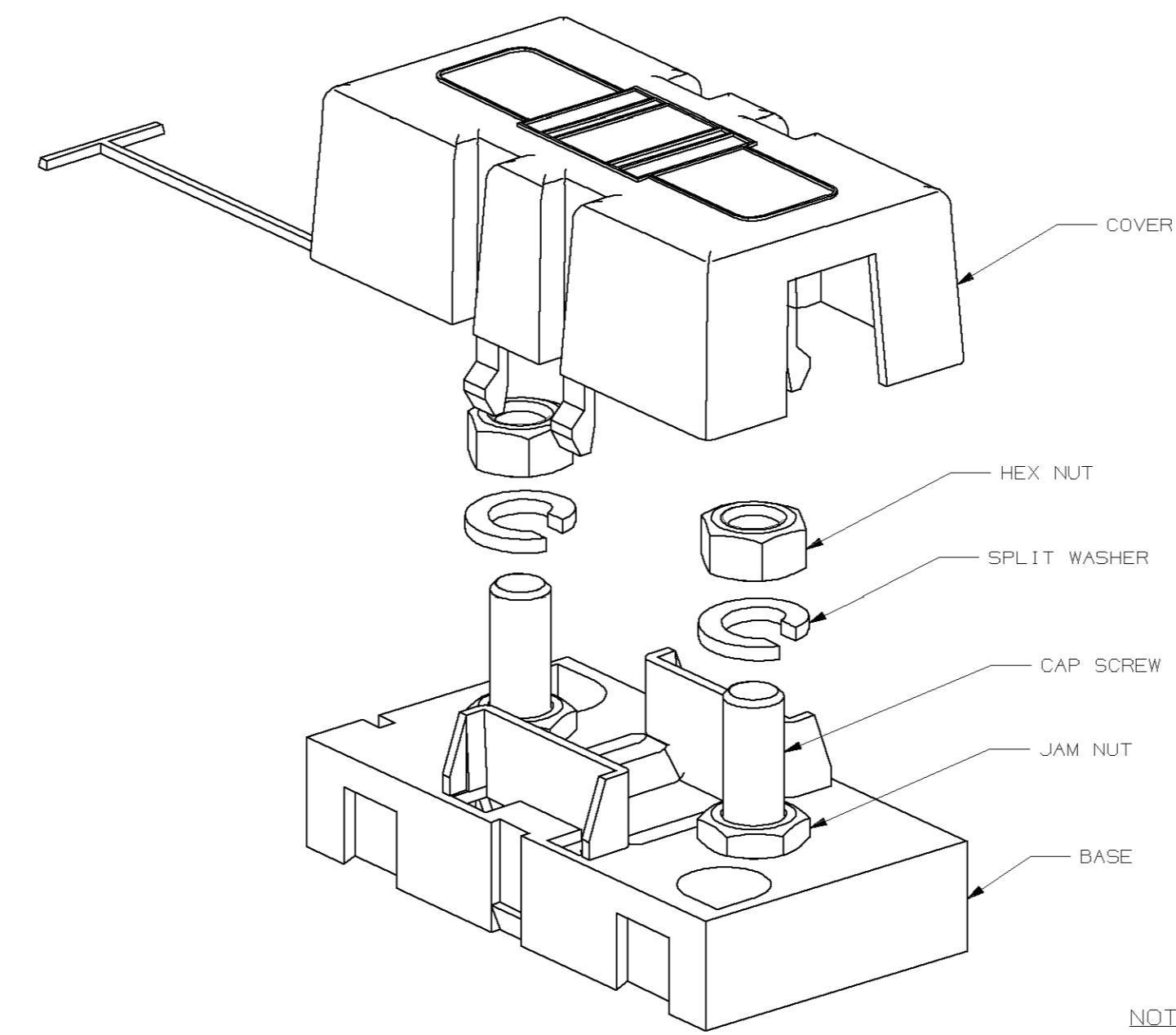
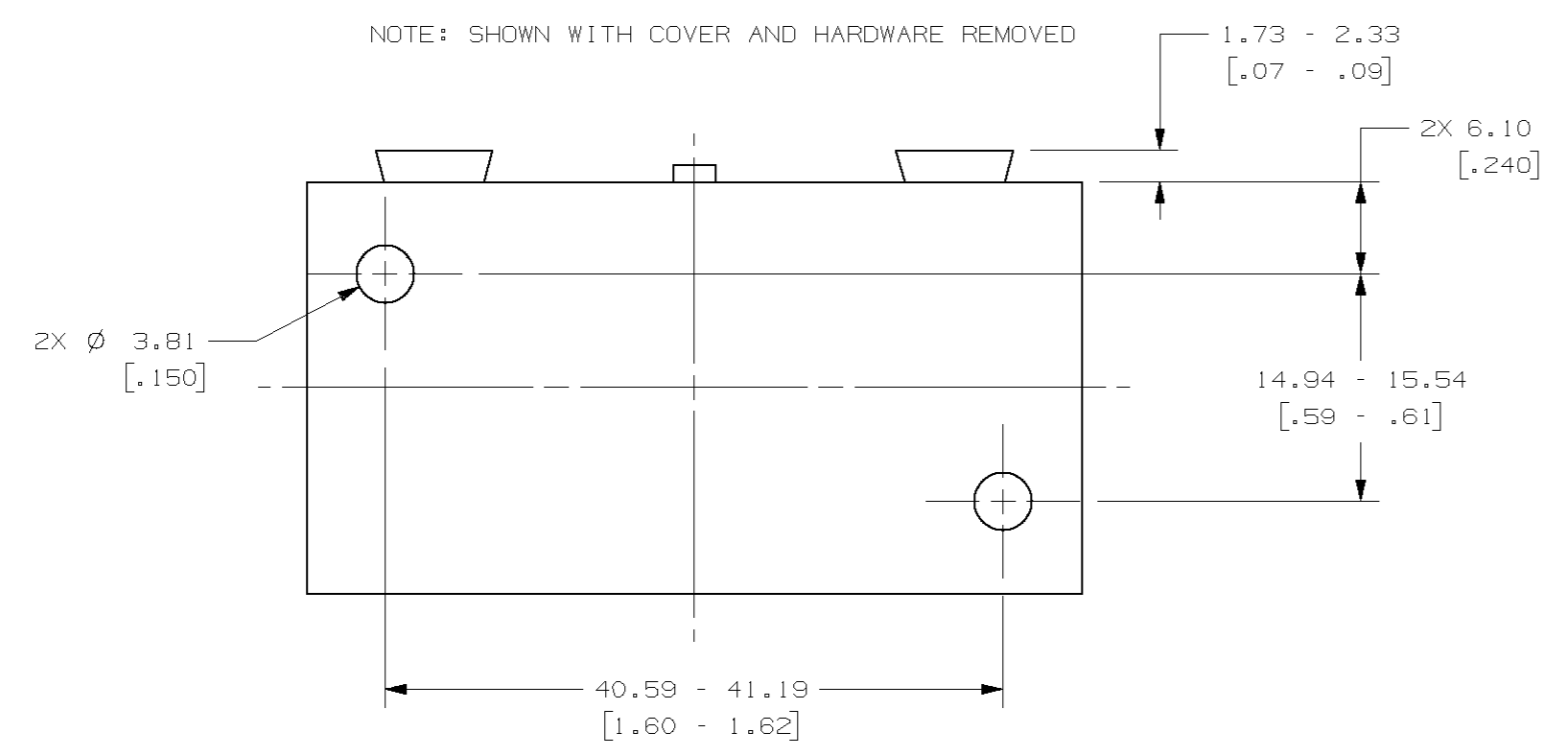


PART NUMBER	COVER OPENING	DIMENSION "A"	FUSE	FUSE QTY/1000	SPLIT WASHER	SPLIT WASHER QTY/1000	HEX NUT	HEX NUT QTY/M	RACLET FASTENER	RACLET FASTENER QTY/1000	STYLE
04980900ZXT	A D	10.44 [ .411 ]	NO	N/A	YES	2000	YES	2000	NO	N/A	1
04980902ZXT	A D	10.44 [ .411 ]	NO	N/A	NO	N/A	YES	2000	NO	N/A	1
04980903ZXT	A D	10.44 [ .411 ]	NO	N/A	YES	2000	YES	2000	NO	N/A	2
04980904ZXT	A D	10.44 [ .411 ]	NO	N/A	YES	2000	YES	4090	NO	N/A	1
04980905ZXT	A C E	10.44 [ .411 ]	NO	N/A	YES	2000	YES	2000	NO	N/A	1
04980906ZXT	A E	10.44 [ .411 ]	NO	N/A	YES	2000	YES	2000	NO	N/A	1
04980907ZXT	A C	10.44 [ .411 ]	NO	N/A	YES	2000	YES	2000	NO	N/A	1
04980908ZXT	E F	N/A	NO	N/A	NO	N/A	NO	N/A	NO	N/A	2
04980909ZXT	E F	N/A	100A	1000	YES	2000	YES	2000	YES	2000	2
04980910ZXT	E F	N/A	NO	N/A	YES	2000	YES	2000	NO	NO	1
04980911ZXT	E F	N/A	50A	1000	YES	2000	YES	2000	YES	2000	2
04980912ZXT	A E F	10.44 [ .411 ]	NO	N/A	YES	2000	YES	2000	NO	N/A	1
04980913ZXT	A D	15.47 [ .609 ]	NO	N/A	NO	N/A	NO	N/A	YES	2000	2
04980914ZXT	A D	15.47 [ .609 ]	40A	1000	YES	2000	YES	2000	YES	2000	2
04980915ZXT	E F	N/A	NO	N/A	YES	2000	YES	2000	NO	N/A	2

\*FOR ADDITIONAL INFORMATION SEE INDIVIDUAL DRAWINGS

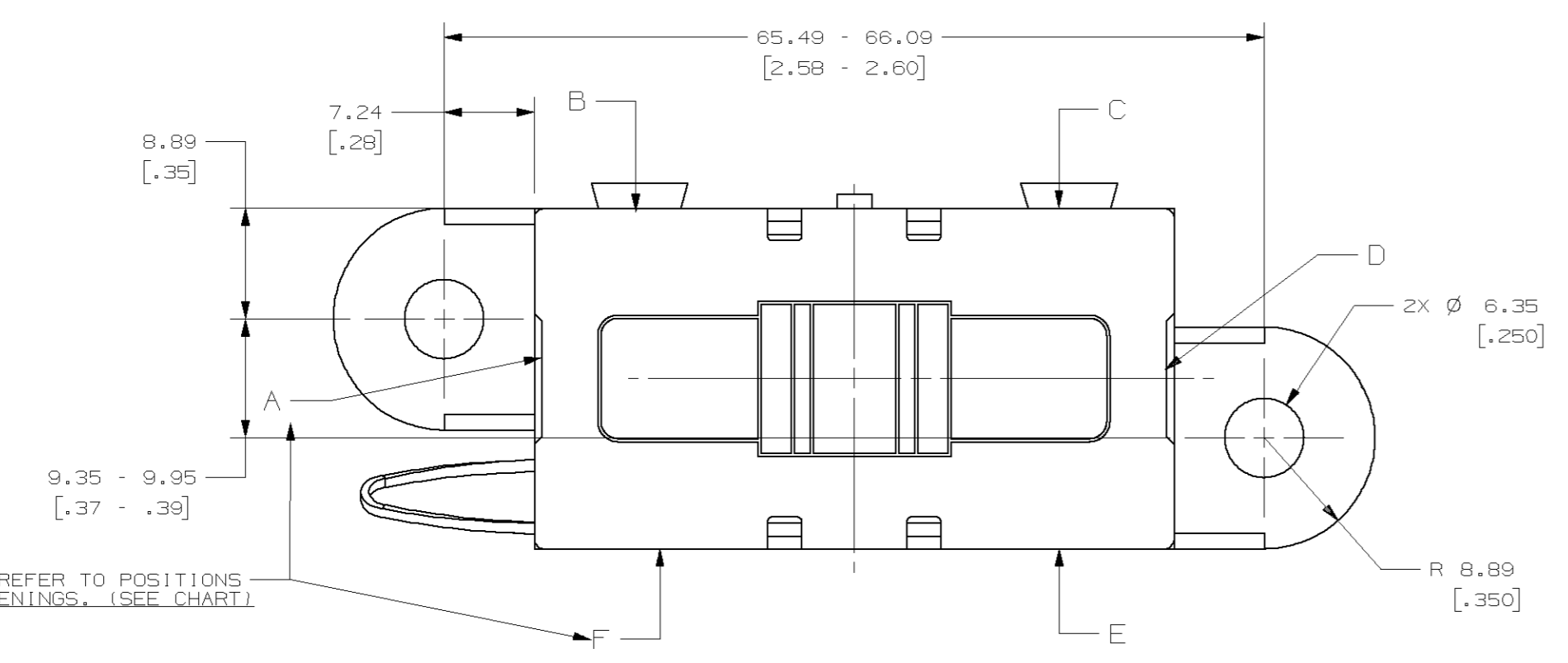
LTR	DATE	REVISION	CHK	APD
A	05/25/05	61735 - RELEASE GLAB		
B	06/07/07	054900-REDRAWN IN US & CONVERT TO METRIC. ADDED TOLERANCE TO DIMENSIONS, 7.24 WAS 18.181 GMB		

NOTE: SHOWN WITH COVER AND HARDWARE REMOVED

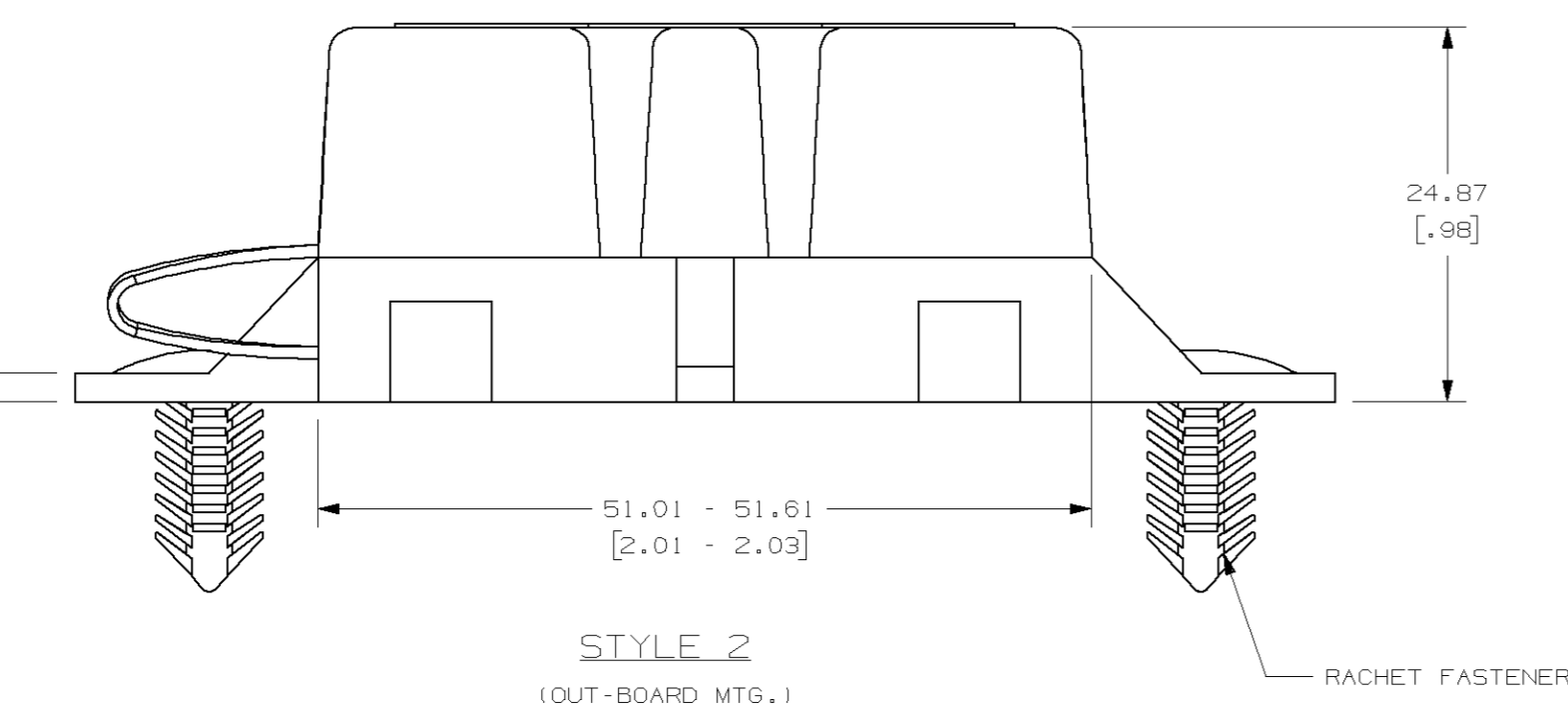
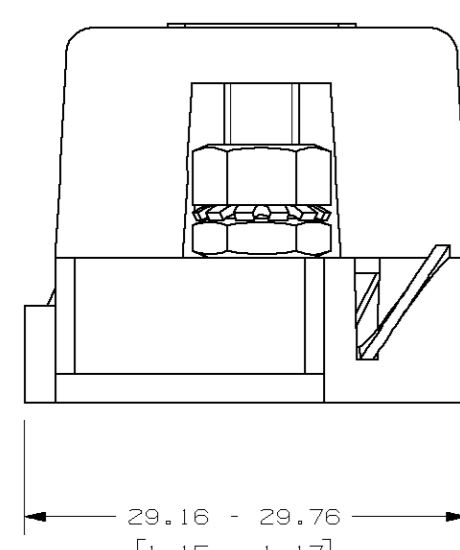
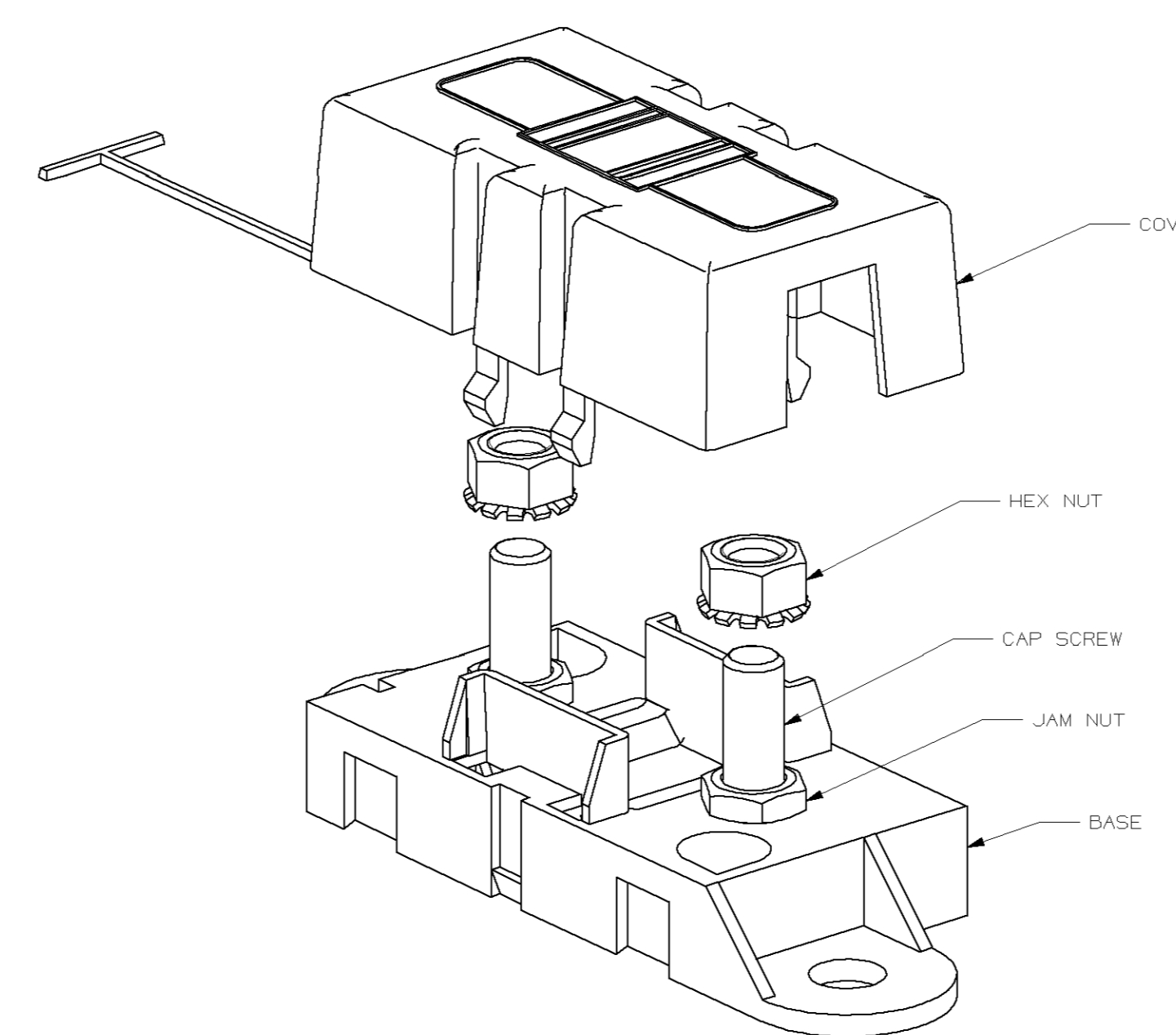


NOTES:

- MATERIAL:
  - \* BODY-GLASS FILLED THERMOPLASTIC: COLOR-BLACK
  - \* COVER-THERMOPLASTIC: COLOR-BLACK
  - \* HARDWARE-M5 THREADED STUDS & NUTS AND STEEL LOCKWASHER WITH ZINC AND TRIVALENT CHROMATE, LEACHED AND SEALED, INTEGRAL TORQUE CONTROL LUBRICANT FINISH (MEETS ASTM STANDARD B-117, 96 HR. SALT SPRAY REQUIREMENT).
  - (04980902ZXT) \* HARDWARE-M5 THREADED STUDS & NUTS WITH INTEGRAL LOCKWASHER WITH ZINC AND TRIVALENT CHROMATE, LEACHED AND SEALED, INTEGRAL TORQUE CONTROL LUBRICANT FINISH. (MEETS ASTM STANDARD B-117, 96 HR. SALT SPRAY REQUIREMENT).
- TORQUE REQUIRED FOR M5 FUSE TERMINAL & CONNECTOR LOCKING NUTS TO BE 4.0-5.0 NEWTON METERS [ 35-44 IN-LBS ]
- HOLDER MEETS L/F VALIDATION TEST SPEC. VS-005004.



LETTER DESIGNATIONS REFER TO POSITIONS OF AVAILABLE COVER OPENINGS. (SEE CHART)



NO	COMPONENT NO	DESCRIPTION	QTY/M	U/M		
BILL OF MATERIALS						
UNLESS OTHERWISE SPECIFIED, DIMENSIONS ARE IN MILLIMETERS. DIMENSIONS IN BRACKETS [ ] ARE INCHES.						
UNLESS OTHERWISE SPECIFIED, DIMENSIONS DO NOT INCLUDE PLATING.						
TOLERANCING TO BE INTERPRETED IN ACCORDANCE WITH ANSI Y14.5M-1994.						
◎	DENOTES CRITICAL CHARACTERISTICS.					
CPK	DENOTES CPK DIMENSIONS, -MINIMUM CPK VALUE.					
(ST)	DENOTES A CHARACTERISTIC THAT PROVIDES AN INDICATION OF PROCESS PERFORMANCE. PROCEDURE FOR MEASUREMENT AND TRACKING TO BE DEFINED IN LITTELFUSE INSPECTION INSTRUCTIONS.					
CP	DENOTES CP DIMENSIONS, -MINIMUM CP VALUE MUST BE WITHIN THE DIMENSIONAL LIMITATIONS SHOWN ON DRAWING AND INITIALLY LOCATED TO ALLOW FOR MAXIMUM TOOL LIFE.					
MATL SPEC		FINISH				
DRW	GLAB	DATE	05/25/05	SCALE	2:1	
TOLERANCE UNLESS OTHERWISE SPECIFIED						
ONE PLACE DEC ±0.3 [ .012 ]		THREE PLACE DEC ±0.050 [ .002 ]				
TWO PLACE DEC ±0.13 [ .005 ]		ANGULAR ±1°				
PROJ	TITLE		MIDIFUSE HOLDER			
DRW		GLAB	DATE	05/25/05	SCALE	2:1
REV		B	REVISION	DRWG. NO.	OUTLINE	
04980900ZXT		THRU		04980915ZXT		
DES PLAINES, ILLINOIS 60518						



CAD GENERATED DRAWING - NO PENCIL CHANGES ALLOWED