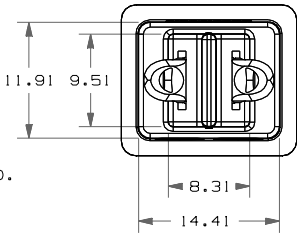
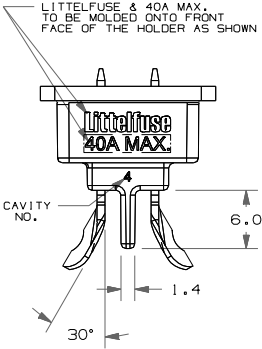
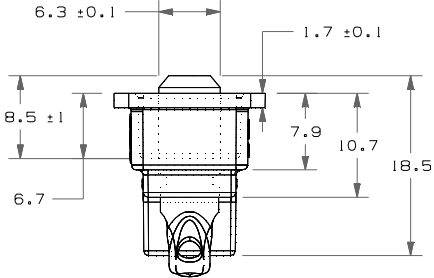
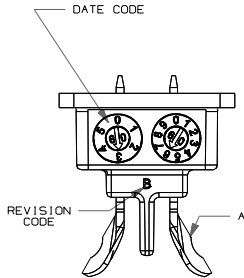
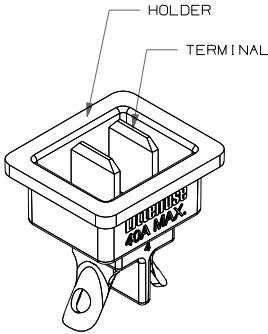
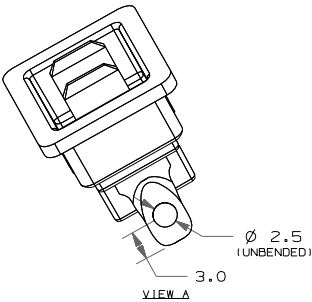
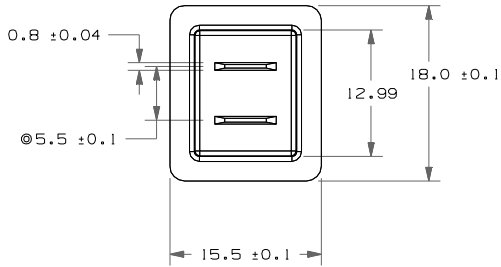


REVISION MARKING	
REVISION LETTER	COMMENT
B	RELEASED (PER 000B20ER)



NOTES :

- MATERIAL: HOLDER- NY PA66, 70G13HS1L, BLACK
TERMINAL- CI100 1/2H, Tin-Plated 5-8um
- TERMINAL: IN MOLDE ONTO THE HOLDER
NO BURRS ALLOWED
MUST BE SOLDERABLE
- CURRENT RATING IS CHANGABLE INSERT
- PUSH PULL FORCE REQUIRED TO BE 5 NEWTON METERS PER ISO 8820.
- OVER LOAD TEST: 100% AND 135%

NO	COMPONENT NO	DESCRIPTION	QTY/M	U/M
BILL OF MATERIAL				
UNLESS OTHERWISE SPECIFIED, DIMENSIONS ARE IN MILLIMETERS. DIMENSIONS IN BRACKETS [] ARE INCHES UNLESS OTHERWISE SPECIFIED, DIMENSIONS DO NOT INCLUDE PLATING.				
©		DENOTES CRITICAL CHARACTERISTICS.		
CPK		DENOTES CPK DIMENSIONS, -MINIMUM CPK VALUE		
		DENOTES A CHARACTERISTIC THAT PROVIDES AN INDICATION OF PROCESS PERFORMANCE. PROCEDURE FOR MEASUREMENT AND TRACKING TO BE DEFINED IN LITTELFUSE INSPECTION INSTRUCTIONS		
CP		DENOTES CP DIMENSIONS, -MINIMUM CP VALUE MUST BE WITHIN THE DIMENSIONAL LIMITATIONS SHOWN ON DRAWING AND INITIALLY LOCATED TO ALLOW FOR MAXIMUM TOOL LIFE		

METRIC COMPONENT

COPIES TO		MATERIAL SPEC	
1	9	18	SEE NOTES
2	10	19	FINISH
3	12	20	SEE NOTES
4	13	21	SCALE 2:1
5	14	22	DATE 01/26/10
6	15	23	DATE SUPER DR
7	16	24	DATE FINISH GOOD WT
8	17	25	DATE
TOLERANCES UNLESS OTHERWISE SPECIFIED (REF. ISO 2768-PH)			
DIMENSION		0.5 - 1.5	0.50 - 1.20
TOLERANCE		±0.05	±0.15
30° ANGLE			±0.15
PROJECTION			±0.2
TITLE		HOLDER - J-CASE W/ SOLDERING TABS	
LITERATURE		HOLDER - J-CASE W/ SOLDERING TABS	
REVISION		A	
DATE		01/26/10	
CHK		NR	
APD			
OUTLINE		OL - OFHJ3003U	