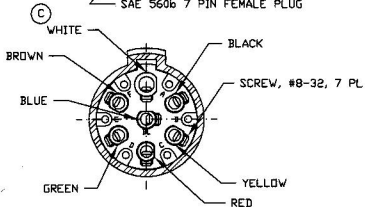
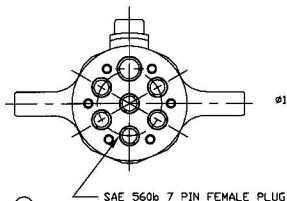
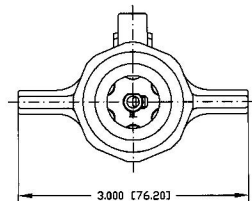
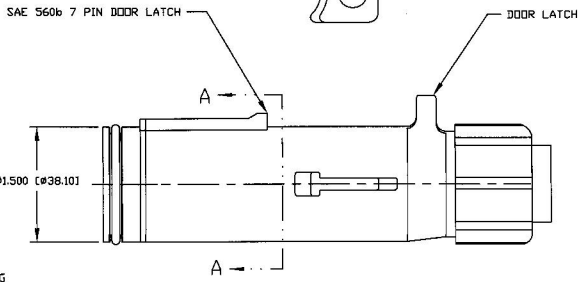
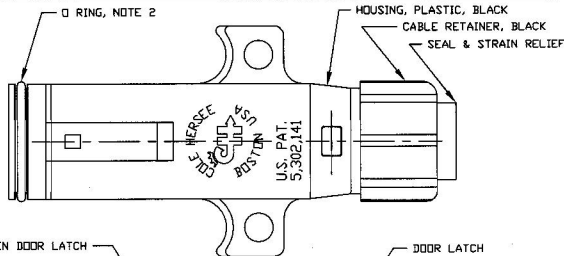


Revision Control Record

Rev.	Description of Change	ECN No.	Date
C	WHITE SCREW	00701	9/19/00



SECTION A-A

- NOTES:
1. ALL DIMENSIONS ARE REFERENCE ONLY
  2. O RING SEALS WHEN PLUG IS INSERTED INTO 12301 OR 12310 SOCKET
  3. WHITE TERMINALS WILL ACCEPT UP TO 8 GA (8.00 MM SQ) WIRE LEAD. BLACK, BROWN, GREEN, RED, AND YELLOW TERMINALS WILL ACCEPT UP TO 10 GA (5.0 MM SQ) WIRE LEADS.

**Tolerances:** Unless otherwise specifically noted, the following are default tolerances:  
 + Plastic Fasteners (Dimensional):  $\pm .02^\circ$   
 + Plastic Fasteners (Dimensional):  $\pm .02^\circ$   
 + Angles (Dimensional):  $\pm 0.5^\circ$   
 + Metal: Refer to applicable English Dimensional Tolerance Tables  
 \*\*\* NOTE: All dimensions are dimensioned to the maximum material condition unless otherwise specified.

**Dimensional Units:** All dimensions are expressed in inches except those shown in brackets (mm) which are expressed in millimeters.

**ASME Y14.5M-2009:** Minimum Tolerances Relativities (Dimensional) should be drafted for specific purposes only.

**PROPRIETARY INFORMATION:** The Engineering Drawing, and the information contained herein, is proprietary to Cole Hersee Company and may not be disclosed, reproduced, or in any way may be transferred or communicated to any other party without the express written consent of an authorized representative of Cole Hersee Company.

**DESIGN CONTROL:** It is the responsibility of the individual using/creating this drawing to ensure that the stated design variables have been agreed with the customer prior to the creation of the final drawing. This is a NON-CERTIFIED DOCUMENT unless otherwise specifically noted.

**NO NET SCALE:** Dimensional variation may occur during printing/ reproduction.

**See For Specific Characterization:**  
 Critical Characteristics, relating to Safety and Regulatory Compliance  
 Significant Characteristics relating to Process Control (MPC)

Control Characteristics relating to Form - Fit - Function as defined by Cole Hersee Company and/or the Customer.

Notes that the identification of any Characteristics as being "Special" does not alter the requirements of ALL specified dimensions & tolerances (and/or notes).

Used On or Ref: \_\_\_\_\_

Scale: 1:1  
 Drawn By: DPS

Date: 8/24/93  
 Drawn By: \_\_\_\_\_  
 Responsible Engineer: \_\_\_\_\_

**Cole Hersee Co.**  
 20 Old Colony Ave., South Boston, MA, 02137  
 Phone: 617-285-2100 Web: www.colehersee.com

**DESCRIPTION:** 7 PIN PLUG

Drawing Part No.: **12311**

Current Rev.: **C**

Pg. 1 of 1