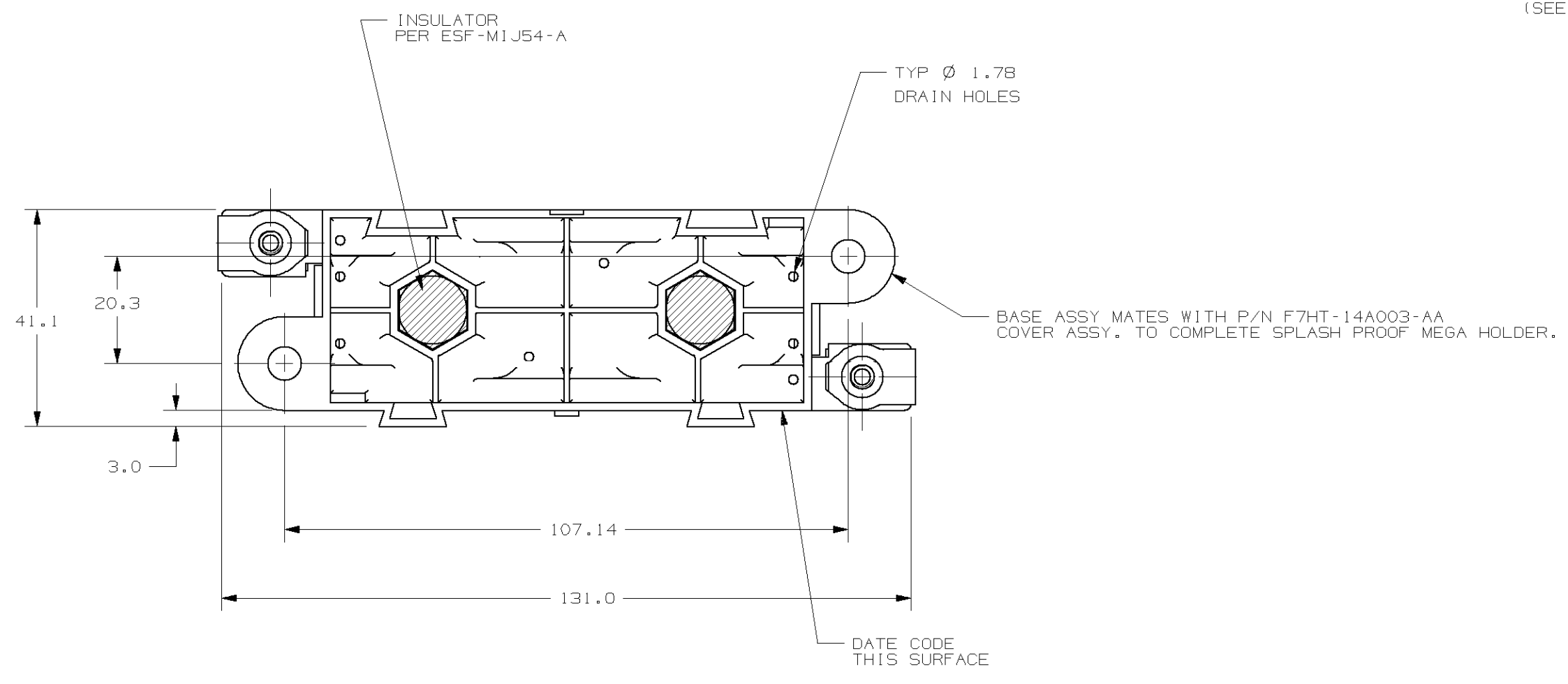
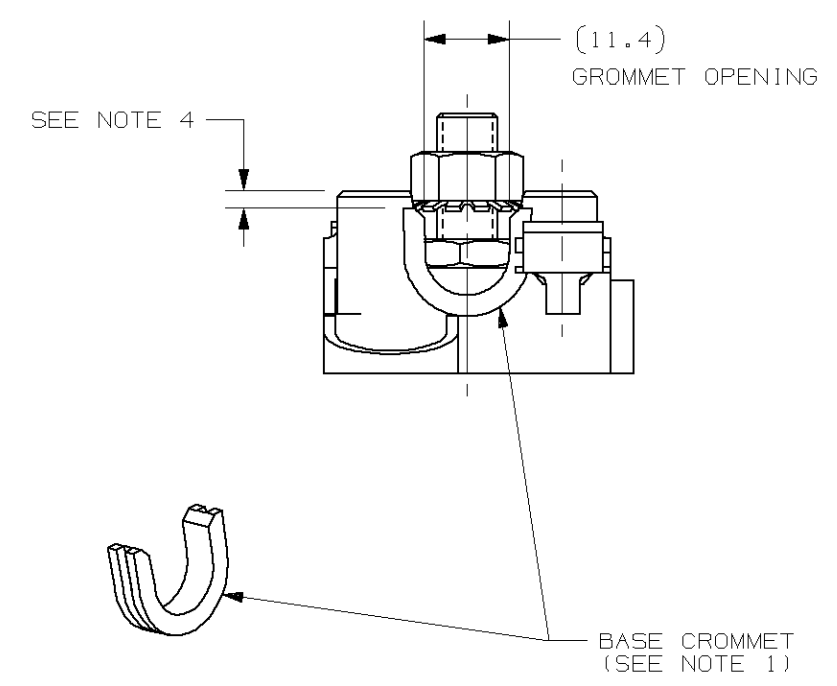
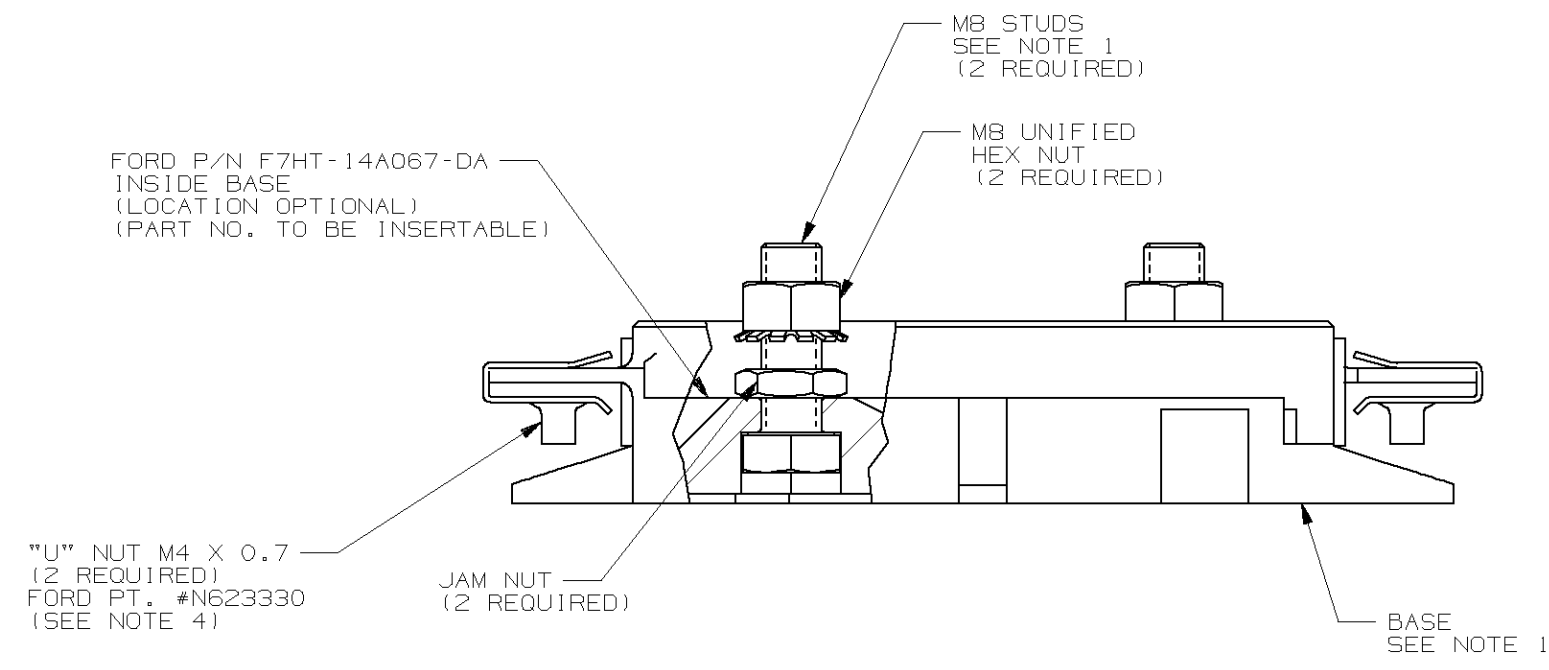


LTR	DATE	REVISION	CHK	APD
A	03/19/96	06986 - RELEASED RFR		
B	10/17/96	378438-ADD NOTE 5, CHG. NOTE 1 GROMMETS MAT'L, REVISE HEX NUT PICTORALLY, CHG LOCATION OF DATE CODE BJJ		
C	03/26/07	85414D-REDRAWN IN UG & CONVERT TO METRIC GMB		



NOTES:

1. MATERIAL:

- BODY - GLASS FILLED NYLON 6/6  
COLOR - BLACK
- MB THREADED STUDS - STEEL; FINISH PER SPEC. S36
- MB NUTS - STEEL; FINISH PER SPEC. S36 - 2 REQ.  
(FOR REF. ONLY FORD P/N N620398-S36)
- GROMMETS - SILICONE; BLACK

- 2. 250 AMP. MAX. RATING AT 125°C
- 3. FOR PART RECYCLING:  
CODE TO READ: PA66+GF30
- 4. SNAP 903-131 "U" NUT TO BASE MOUNTING TABS
- 5. BOTH TOP ENDS OF GROMMETS MUST BE EVEN WITH TOP OF THE BASE SIDE AFTER ASSEMBLY.

CUSTOMER: FORD TRUCK  
 CUSTOMER P/N: F7HT-14A067-DA

METRIC

NO	COMPONENT NO	DESCRIPTION	QTY/M	U/M
BILL OF MATERIAL				
UNLESS OTHERWISE SPECIFIED, DIMENSIONS ARE IN MILLIMETERS. DIMENSIONS IN BRACKETS [ ] ARE INCHES				
UNLESS OTHERWISE SPECIFIED, DIMENSIONS DO NOT INCLUDE PLATING.				
⊙	DENOTES CRITICAL CHARACTERISTICS.			
CPK	DENOTES CPK DIMENSIONS. -MINIMUM CPK VALUE 1.33			
ST	DENOTES A CHARACTERISTIC THAT PROVIDES AN INDICATION OF PROCESS PERFORMANCE. PROCEDURE FOR MEASUREMENT AND TRACKING TO BE DEFINED IN LITTELFUSE INSPECTION INSTRUCTIONS			
CP	DENOTES CP DIMENSIONS. -MINIMUM CP VALUE MUST BE WITHIN THE DIMENSIONAL LIMITATIONS SHOWN ON DRAWING AND INITIALLY LOCATED TO ALLOW FOR MAXIMUM TOOL LIFE			
COPIES TO		MATL SPEC		
1	9	18	FINISH	
2	10	19		
3	12	20		
4	13	21	DRW	RFR
5	14	23	DATE	03/18/96
6	15	33	SCALE	1:1
7	16	43	CHK	DATE
8	17	53	APPD	DATE
		FINISH GOOD WT		
		GRAMS/PIECE		
TOLERANCE UNLESS OTHERWISE SPECIFIED				
ONE PLACE DEC		+/- .3		THREE PLACE DEC
TWO PLACE DEC		+/- .25		ANGULAR
				+/- .1°
3RD ANGLE PROJECTION	TITLE		SPLASH PROOF MEGA HOLDER BASE ASSY	
Littelfuse		REVISION	DRWG. NO.	OUTLINE
		C	298907-010	
DES PLAINES, ILLINOIS 60016				

CAD GENERATED DRAWING - NO PENCIL CHANGES ALLOWED