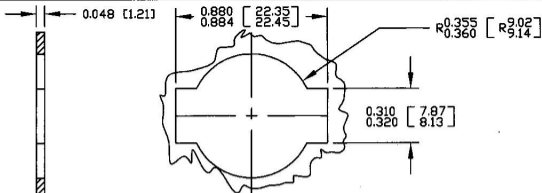
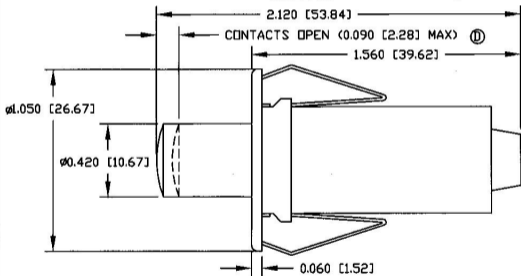


Revision Control Record			
Rev.	Description of Change	ECN No.	Date
C	PANEL VIEW	00728	9/27/00
D	NORMALLY CLOSED	00864	12/14/00



MOUNTING HOLE

SCALE 2:1



SWITCH ACCEPTS (2)  
0.156 [3.96] DIA MALE  
BULLET TERMINALS

NOTES:

1. ALL DIMENSIONS REFERENCE
2. CONTACTS NORMALLY CLOSED

(D)

Tolerances: Unless otherwise specifically noted, the following are default tolerances:

- 2-place Decimal Dimensions  $\pm 0.02"$
- 3-place Decimal Dimensions  $\pm 0.005"$
- Angular Dimensions  $\pm 1.0 \text{ Deg.}$
- Metric: Refer to equivalent English Dimension Tolerance

\*\*\* NOTE: All tolerances are Non-Cumulative. \*\*\*

Dimensional Units: All dimensions are expressed in inches except those shown in brackets (xxx) are expressed in millimeters

"REF" or an Asterisk (\*) = Non-Tolerance Reference Dimension, shown for clarification purposes only.

PROPRIETARY INFORMATION: This Engineering Drawing and the information contained herein, is proprietary to Cole Hersee Company and may not be disclosed, re-produced, or in any other way transferred or communicated to any other party without the express written consent of an authorized representative of Cole Hersee Company.

DESIGN CONTROL: It is the responsibility of the individual using/referencing this drawing to ensure that the noted design revision level agrees with the revision level of the Controlled Document (Master Drawing). This is a NON-CONTROLLED DOCUMENT unless otherwise specifically noted.

DO NOT SCALE: Dimensional variation may occur during printing/reproduction.

Key for Special Characteristics:



Critical Characteristics, relating to Safety and/or Regulatory Compliance



Significant Characteristics relating to Process Control (SPC)



Control Dimension relating to Form - Fit - Function as defined by Cole Hersee Company and/or the Customer

(Note that the identification of any Characteristics as being "Special" does not alter the requirement that ALL specified dimensions & tolerances must be met.)



**Cole Hersee Co.**

20 Old Colony Ave., South Boston, MA, 02127  
Phn: 617-268-2100 Web: www.colehersee.com

Description: DOOR SWITCH - N/C

Drawing / Part No.:

9075

Current Rev.

D

Used On or Ref.:

Scale: 2:1

Drawn: NK

Date Drawn: 8/25/60

Responsible Engineer: N/A

Pg. 1 of 1