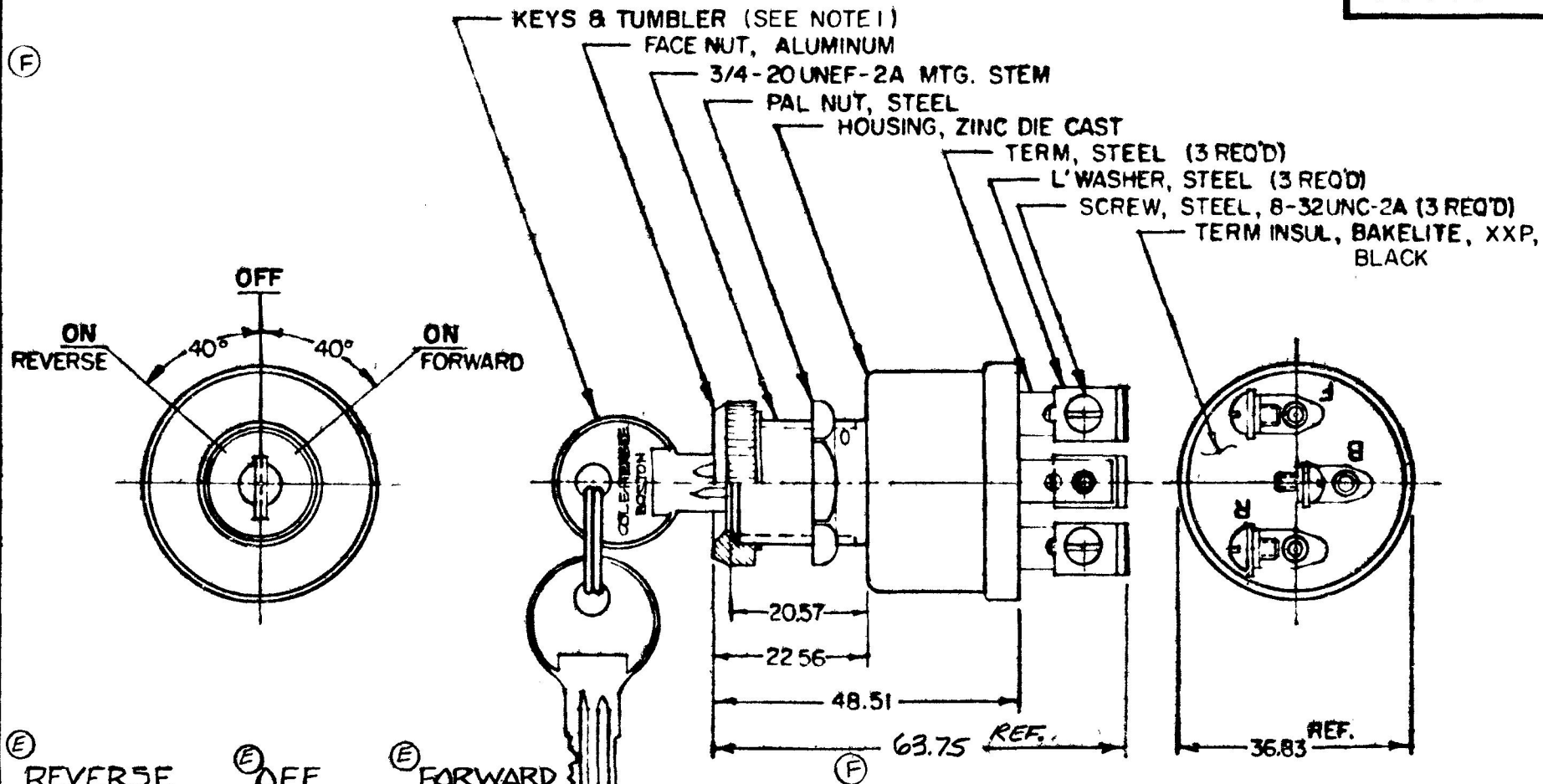
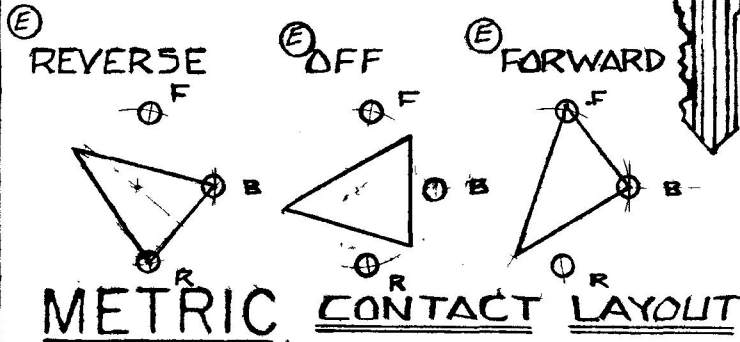


WM  
 .25  
 .57  
 .88  
 .83  
 .51  
 63.75  
 IN  
 .010  
 .810  
 .900  
 1.450  
 1.910  
 2.510

95593



- NOTE:
- SUPPLIED IN SETS OF 10 MATING KEYS & CYLINDERS, CH-501 THRU CH-506, -510, -512, -516 & CH-523
  - ADAPTER FACE NUT PERMITS ASSEMBLY OF SWITCH TO 3/4 & 7/8 DIA PANEL HOLES
  - ALL STEEL PARTS PLATED



EX-14784

DO NOT SCALE

LET	WAS	DATE	BY	LET	WAS	DATE	BY	MATERIAL NOTED	DRAWN	CHECKED	APPRV D	SCALE	DATE DRAWN
									GAK	11-14-79		1:1	5-25-67
				G	FOR ZINC / 25239	10/23/72	JH	FINISH NOTED	 20 OLD COLON AVENUE SOUTH BOSTON, MA U.S.A. 02127				DATE BLUEPRINT
				I	69.51/11806	11/29/65	VB	TOLERANCES					3 POSITION REVERSING SWITCH
				E	ADDED VIEWS	4-7-83	VB	DECIMAL ± .010					
				D	REDRAWN	11-9-79	RR	METRIC ± .25					

CH 188(4 78)