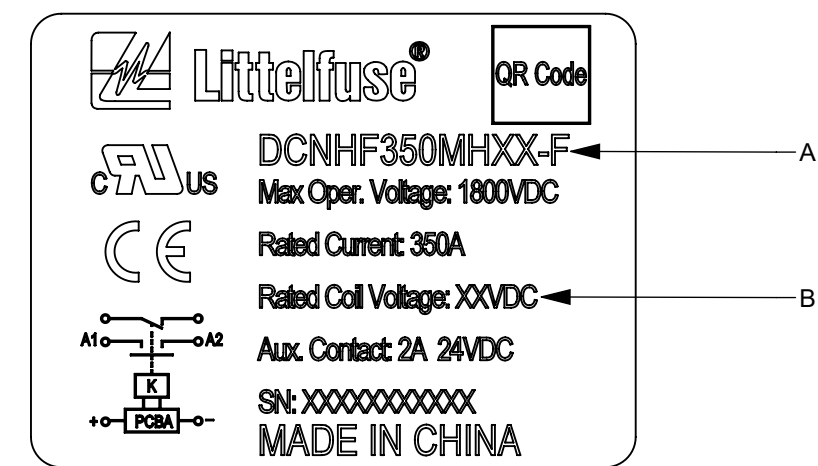
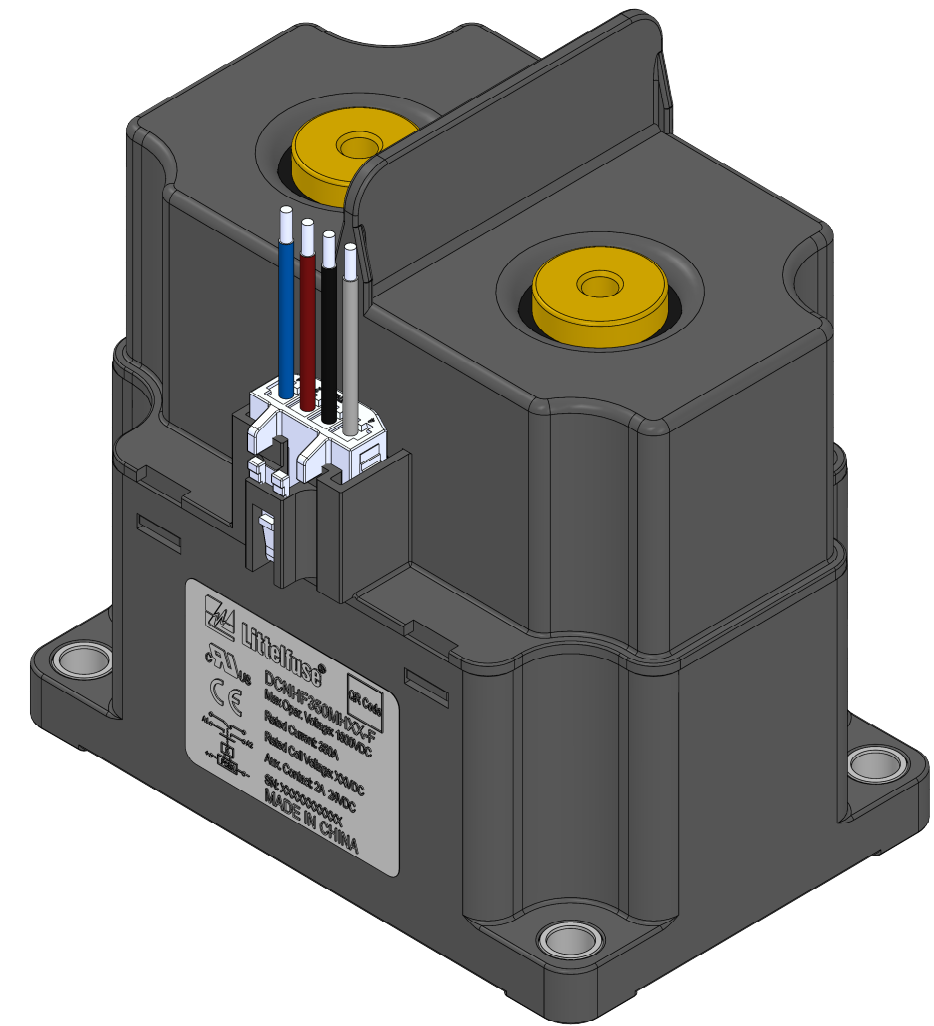
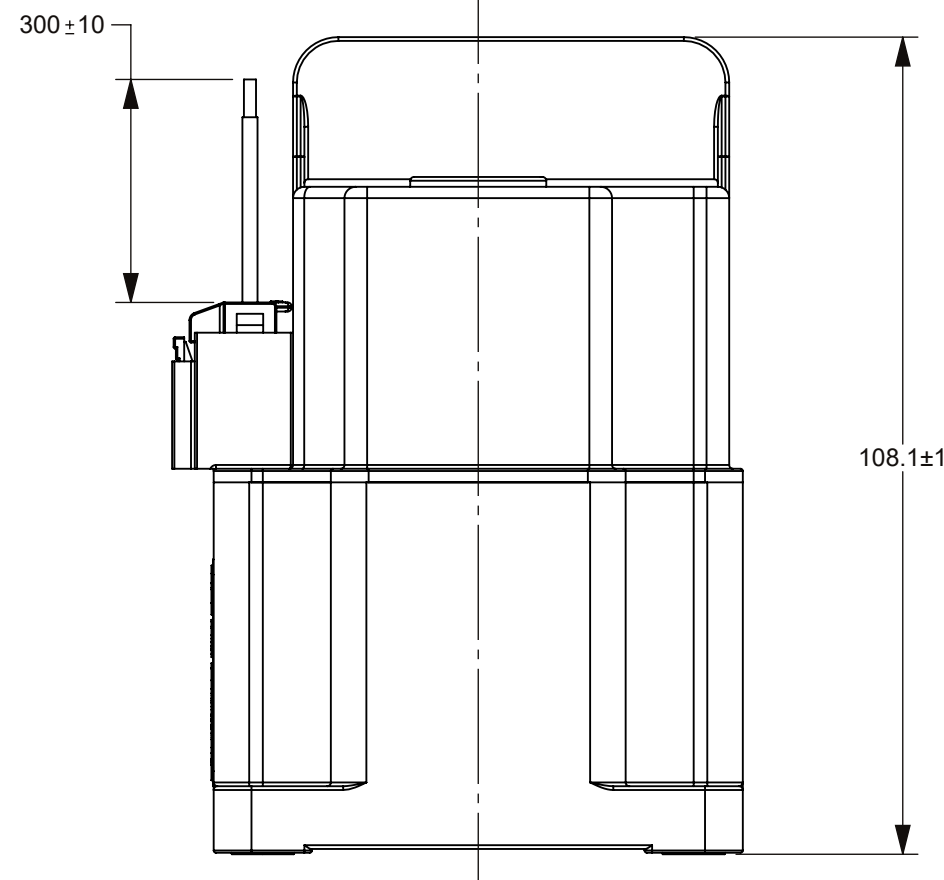
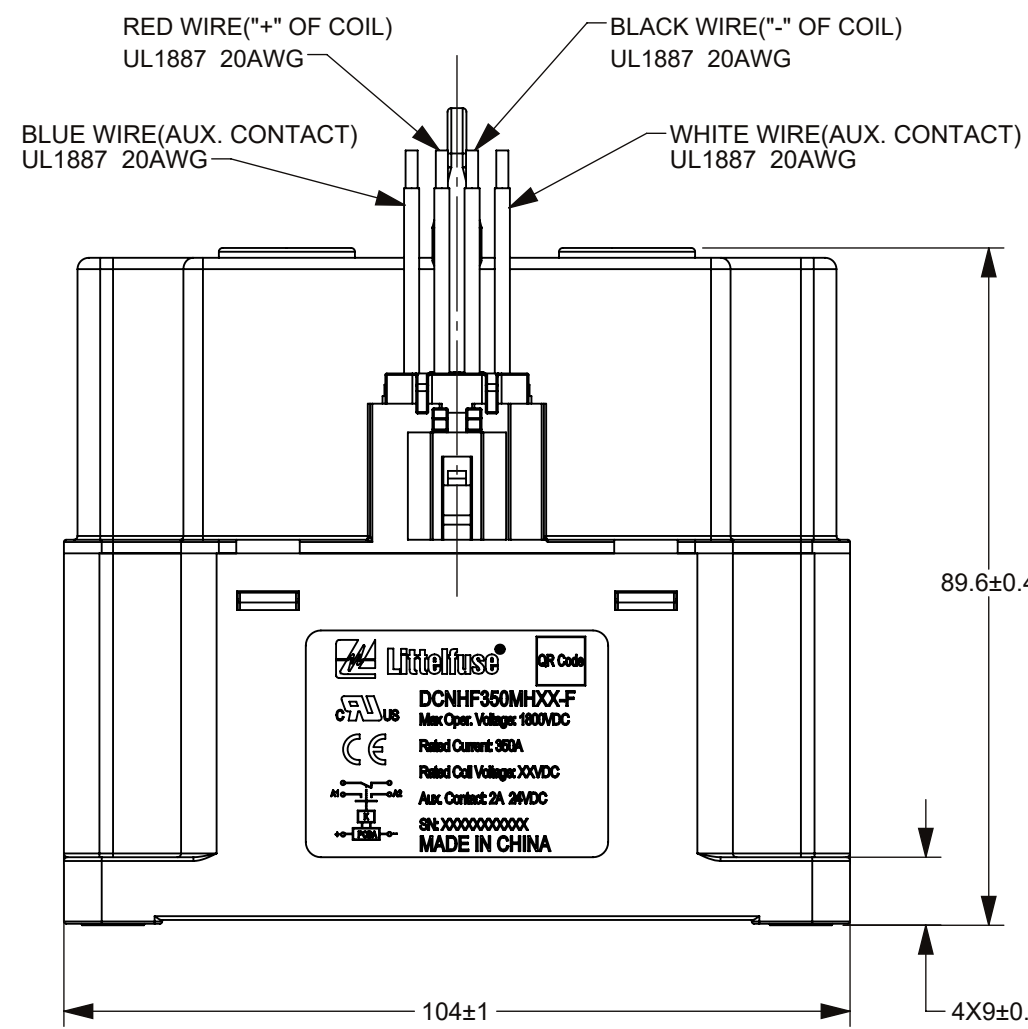
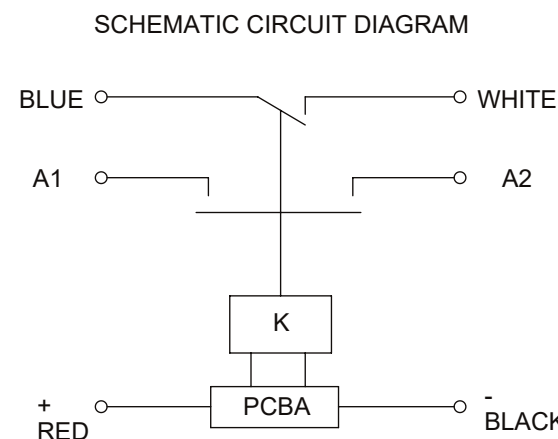
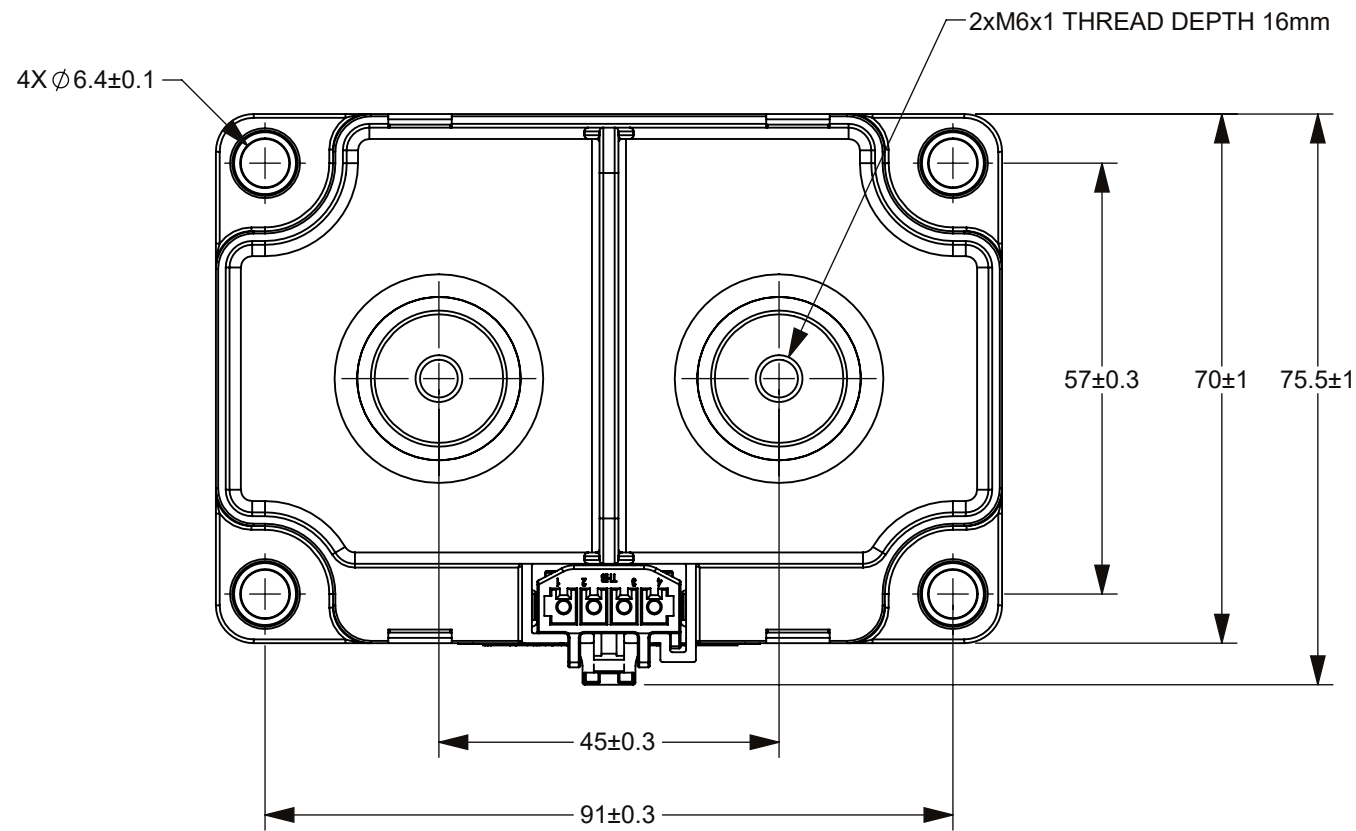


THIS DRAWING AND THE INFORMATION CONTAINED WITHIN IT ARE CONFIDENTIAL AND MAY NOT BE COPIED OR DISCLOSED WITHOUT THE WRITTEN PERMISSION OF LITTELFUSE.

REVISIONS				
ZONE	REV.	DESCRIPTION	DATE	APPROVED
	A	PCO-50000301378 INITIAL RELEASE	MAY./15/2025	D. ZHANG



VIEW 1  
SCALE 2:1

TABLE 1			
PART NUMBER	DCNHF350MH12-F	DCNHF350MH24-F	
Max. SWITCHING VOLTAGE	1,800V DC		
RATED CONTACT CURRENT	350A		
OPERATING VOLTAGE IN COLD STATE @ 25°C	COIL VOLTAGE	12V DC	24V DC
	MAX. VOLTAGE	16V DC	32V DC
	COIL POWER	Starting:50W(0.2s connection) ;Holding:5W	
	PICK-UP	≤9V	≤18V
	DROP-OUT	≥1.2V	≥2.4V
MAIN CONTACT RESISTANCE	≤0.2mΩ@350A		
INSULATION RESISTANCE @ 1,000 VDC (INITIAL)	≥1,000MΩ		
DIELECTRIC STRENGTH	Between open contacts	4,000V AC, 1 MINUTE, LEAKAGE CURRENT≤1 mA	
	Between contacts and coil	4,000V AC, 1 MINUTE, LEAKAGE CURRENT≤1 mA	
MAX BREAK CAPABILITY	2,000A@1000V DC, 1CYCLE		
	1,000A@1500V DC, 1CYCLE		
ELECTRIC LIFE (RESISTIVE LOAD)	1000 CYCLES (350A @ 1,000V DC)		
	100 CYCLES (350A @ 1,500V DC)		
	6000 CYCLES (100A @ 1,500V DC)		
	1500 CYCLES (100A @ 1,800V DC)		
MECHANICAL LIFE (NO LOAD, CYCLES)	200,000		

TABLE 2			
NO.	"A"	"B"	REMARK
1	DCNHF350MH12-F	12VDC	NAMEPLATE(VIEW1)
2	DCNHF350MH24-F	24VDC	

- NOTES:
- ALL DIMENSIONS ARE REFERENCE ONLY.
  - SEE TABLE 2 FOR NAME PLATE AND PNs.
  - PRODUCT TYPE: SPST-NO, NON-POLAR CONTACTOR WITH AUXILIARY CONTACT; AUXILIARY TYPE: SPST-NO.
  - MATERIALS AND FINISH:
    - HOUSING: THERMOPLASTIC PLASTICS.
    - CONTACTS: COPPER ALLOY.
    - CONTACT STUDS: PURE COPPER.
  - WEIGHT: ABOUT 1100GRAMS.
  - MAIN CONTACT M6 STUD, TORQUE: 8~10N\*m.
  - MOUNTING: M5 BOLT, RECOMMENDED TORQUE 3 N\*m ~ 4 N\*m.
  - RoHS COMPLIANT.
  - THE COIL OF THE CONTACTOR IS POLAR, SO THE CONNECTION OF THE COIL AND CONTACT SHOULD BE OPERATED ACCORDING TO THE SCHEMATIC CIRCUIT DIAGRAM.

DIMENSIONS ARE SHOWN IN MILLIMETERS. DIMENSIONS AND TOLERANCES ARE DEFINED ACCORDING TO ANSIA/MSE Y14.5-1994.		
●	FIT/ FUNCTION CRITICAL CHARACTERISTICS	
<S>	SAFETY/ COMPLIANCE CRITICAL CHARACTERISTICS SYMBOL	
CPK	DENOTES CPK DIMENSIONS MINIMUM CPK VALUE	
(ST)	DENOTES A CHARACTERISTIC THAT PROVIDES AN INDICATION OF PROCESS PERFORMANCE PROCEDURE FOR MEASUREMENT AND TRACKING TO BE DEFINED IN LITTELFUSE INSPECTION INSTRUCTIONS	
CP	DENOTES CP DIMENSIONS. MINIMUM CP VALUE MUST BE WITHIN THE DIMENSIONAL LIMITATIONS SHOWN ON DRAWING AND INITIALLY LOCATED TO ALLOW FOR MAXIMUM TOOL LIFE	
NAME	DATE	
DRAWN V. ZHANG	MAY./15/2025	
CHECKED JY. SHI	MAY./15/2025	
FORM NO. CVP-PE40-0005 REV B		
THIRD ANGLE PROJECTION		
DO NOT SCALE DRAWING	SCALE 1:1	SHEET 1 OF 1



TITLE  
DCNHF 350A NON-POLAR CONTACTOR WITH AUXILIARY

SIZE C DWG. NO. OL-DCNHF350MHXX-F,CHT REV. A