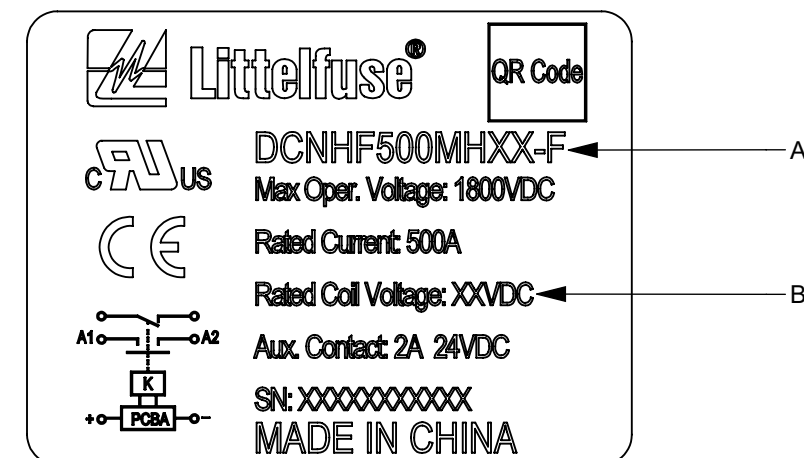
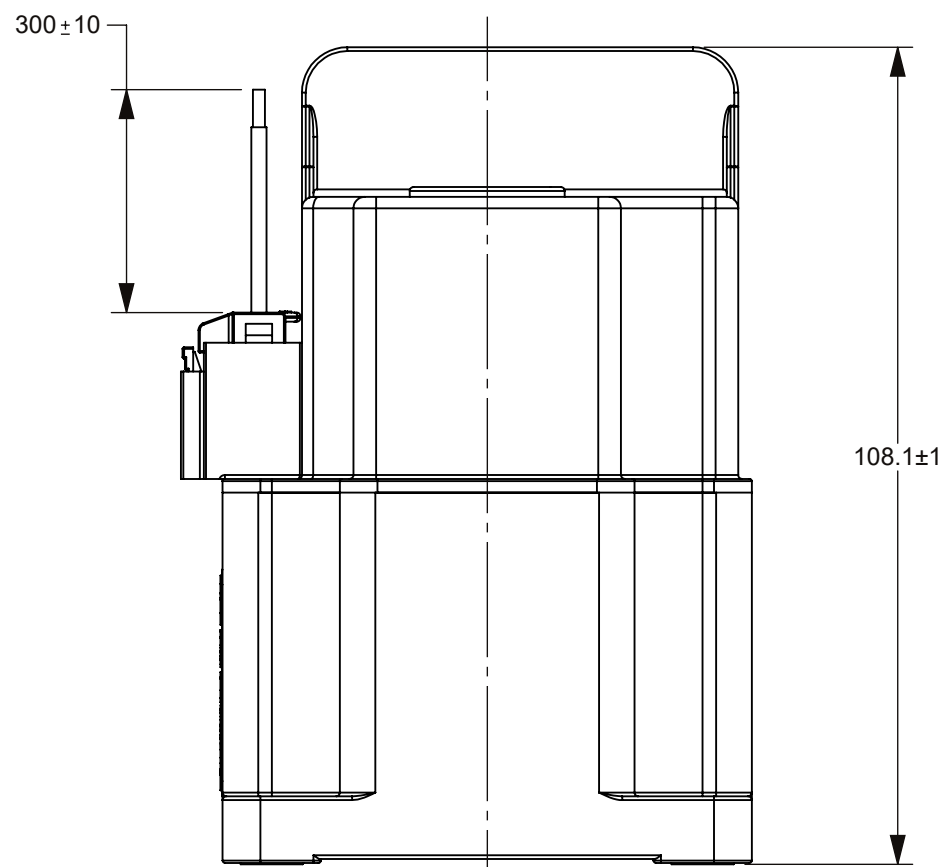
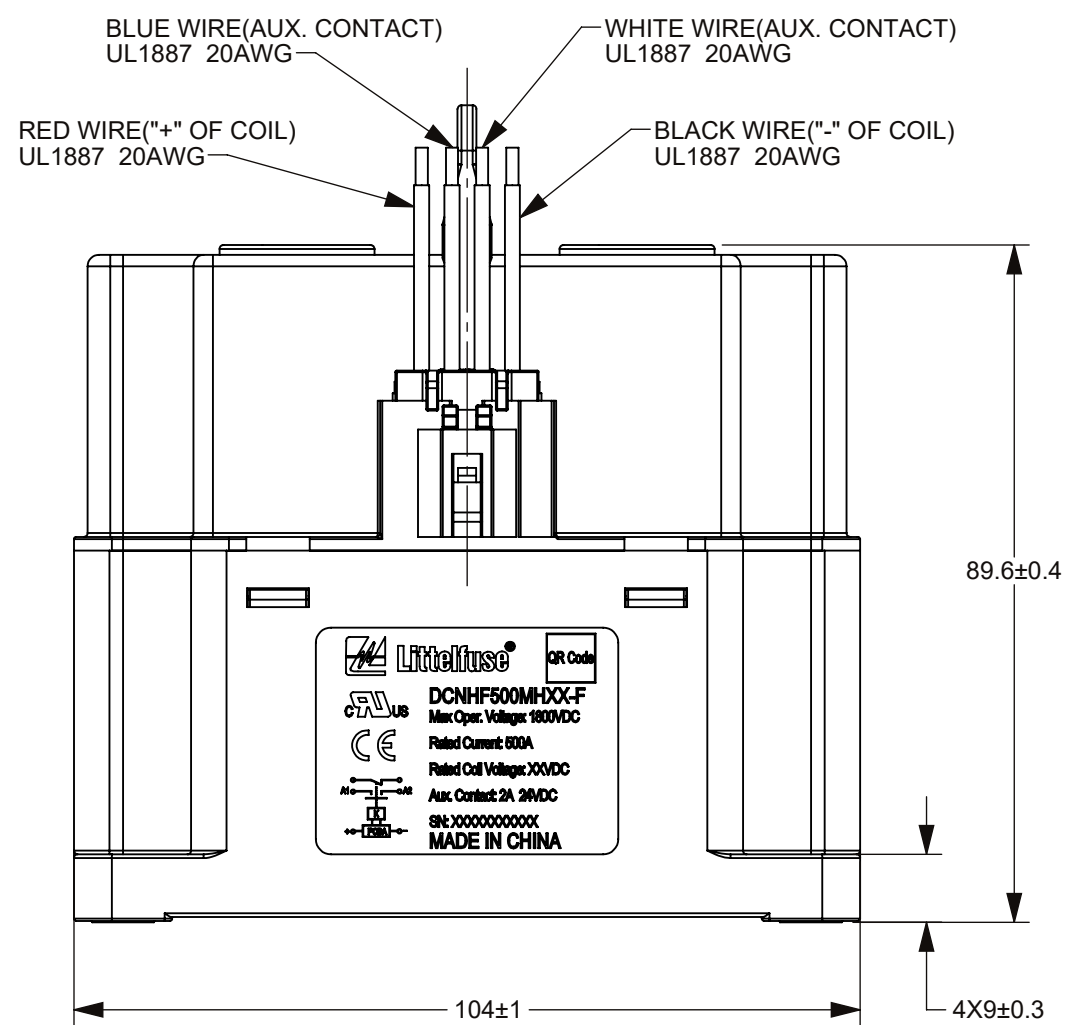
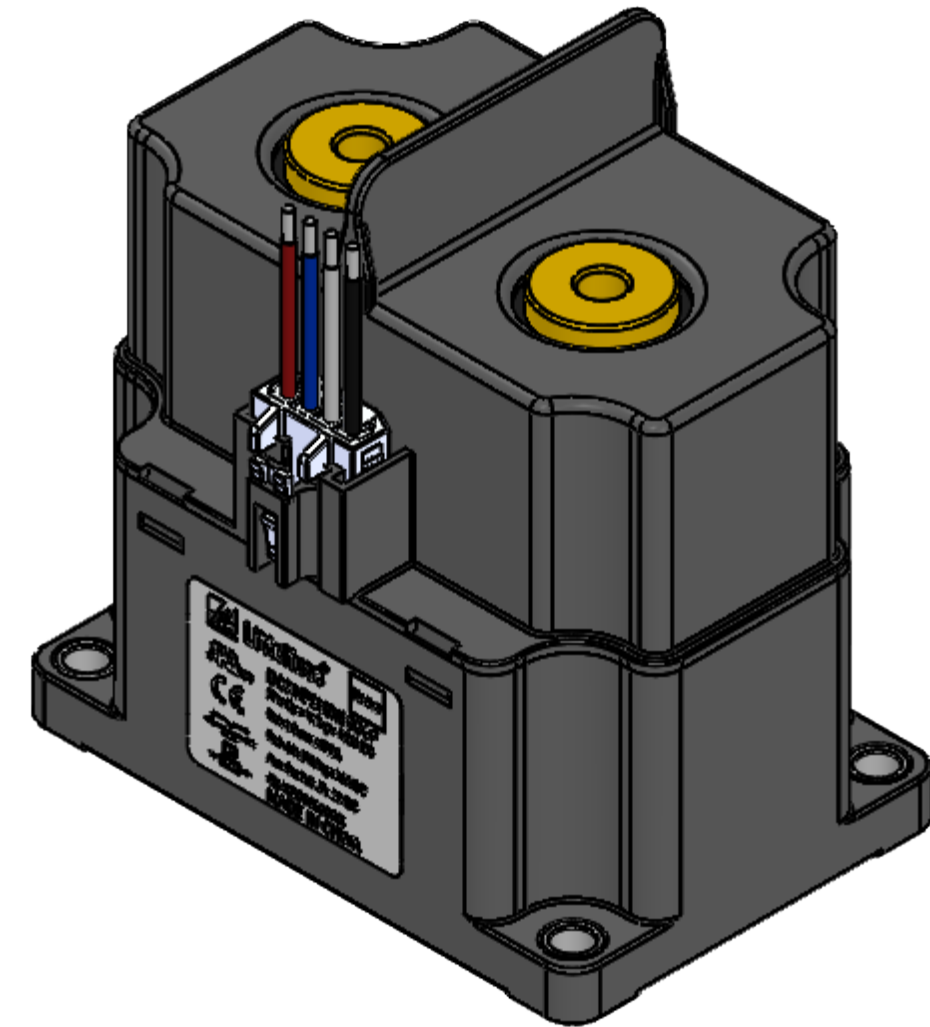
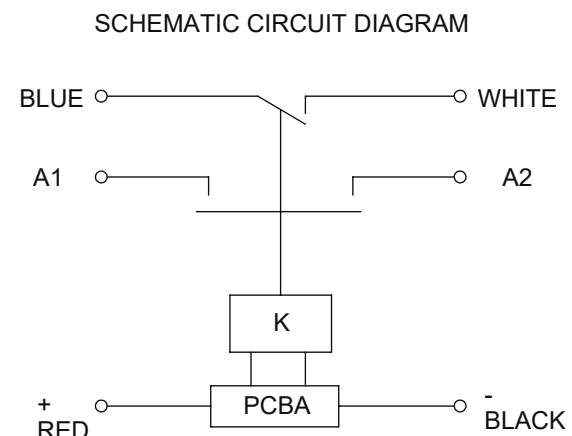
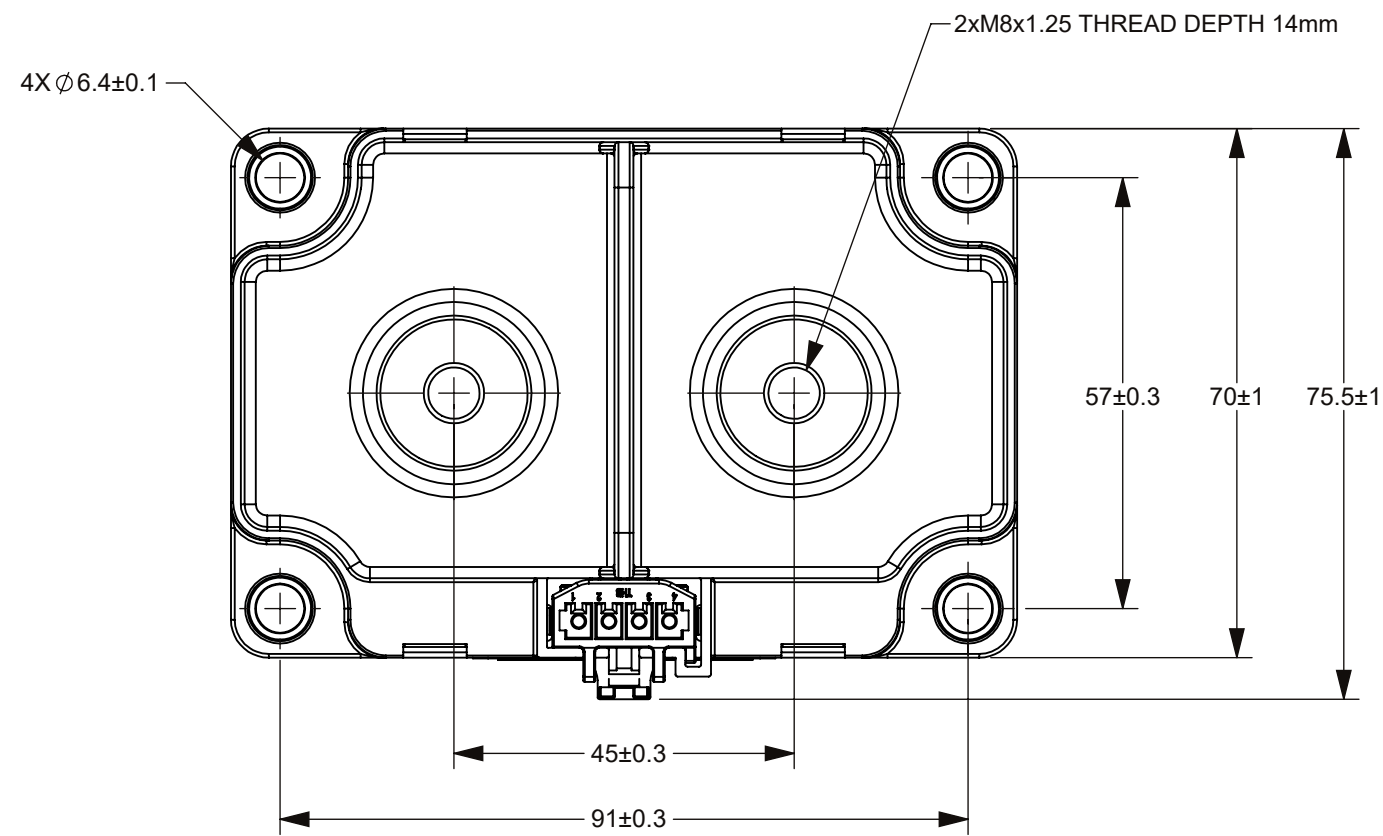


THIS DRAWING AND THE INFORMATION CONTAINED WITHIN IT ARE CONFIDENTIAL AND MAY NOT BE COPIED OR DISCLOSED WITHOUT THE WRITTEN PERMISSION OF LITTELFUSE.

| REVISIONS | | | | |
|-----------|------|----------------------------------|--------------|----------|
| ZONE | REV. | DESCRIPTION | DATE | APPROVED |
| | A | PCO-500000301358 INITIAL RELEASE | MAY./21/2025 | D. ZHANG |



VIEW 1
SCALE 2:1

| PART NUMBER | DCNH500MH12-F | DCNH500MH24-F | |
|---|--|---|--------|
| Max. SWITCHING VOLTAGE | 1,800V DC | | |
| RATED CONTACT CURRENT | 500A | | |
| OPERATING VOLTAGE IN COLD STATE @ 25°C | COIL VOLTAGE | 12V DC | 24V DC |
| | MAX. VOLTAGE | 16V DC | 32V DC |
| | COIL POWER | Starting:50W(0.3s connection) ;Holding:5W | |
| | PICK-UP | ≤8V | ≤16V |
| | DROP-OUT | ≥1.2V | ≥2.4V |
| MAIN CONTACT RESISTANCE | ≤0.2mΩ@500A | | |
| INSULATION RESISTANCE @ 1,000 VDC (INITIAL) | ≥1,000MΩ | | |
| DIELECTRIC STRENGTH | Between open contacts | 4,000V AC, 1 MINUTE, LEAKAGE CURRENT≤1 mA | |
| | Between contacts and coil | 4,000V AC, 1 MINUTE, LEAKAGE CURRENT≤1 mA | |
| MAX BREAK CAPABILITY | 2,000A@1000V DC, 1CYCLE | | |
| ELECTRIC LIFE (RESISTIVE LOAD) | 1500 CYCLES (500A @ 1,000V DC), ONLY BREAK | | |
| | 20 CYCLES (500A @ 1,500V DC), ONLY BREAK | | |
| | 6000 CYCLES (100A @ 1,800V DC) | | |
| MECHANICAL LIFE (NO LOAD, CYCLES) | 200,000 | | |

| NO. | "A" | "B" | REMARK |
|-----|---------------|-------|------------------|
| 1 | DCNH500MH12-F | 12VDC | NAMEPLATE(VIEW1) |
| 2 | DCNH500MH24-F | 24VDC | |

- NOTES:
- ALL DIMENSIONS ARE REFERENCE ONLY.
 - SEE TABLE 2 FOR NAME PLATE AND PNs.
 - PRODUCT TYPE: SPST-NO, NON-POLAR CONTACTOR WITH AUXILIARY CONTACT; AUXILIARY TYPE: SPST-NO.
 - MATERIALS AND FINISH:
 - HOUSING: THERMOPLASTIC PLASTICS.
 - CONTACTS: COPPER ALLOY.
 - CONTACT STUDS: PURE COPPER.
 - WEIGHT: ABOUT 1100GRAMS.
 - MAIN CONTACT M8 STUD, TORQUE: 12~15N·m.
 - MOUNTING: M5 BOLT, RECOMMENDED TORQUE 3 N·m ~ 4 N·m.
 - RoHS COMPLIANT.
 - THE COIL OF THE CONTACTOR IS POLAR, SO THE CONNECTION OF THE COIL AND CONTACT SHOULD BE OPERATED ACCORDING TO THE SCHEMATIC CIRCUIT DIAGRAM.

| | |
|--|--|
| DIMENSIONS ARE SHOWN IN MILLIMETERS. DIMENSIONS AND TOLERANCES ARE DEFINED ACCORDING TO ANSIS/ASME Y14.5-1994. | |
| ● | FTI / FUNCTION CRITICAL CHARACTERISTICS |
| <S> | SAFETY / COMPLIANCE CRITICAL CHARACTERISTICS SYMBOL |
| CPK | DENOTES CPK DIMENSIONS MINIMUM CPK VALUE |
| (ST) | DENOTES A CHARACTERISTIC THAT PROVIDES AN INDICATION OF PROCESS PERFORMANCE PROCEDURE FOR MEASUREMENT AND TRACKING TO BE DEFINED IN LITTELFUSE INSPECTION INSTRUCTIONS |
| CP | DENOTES CP DIMENSIONS. MINIMUM CP VALUE MUST BE WITHIN THE DIMENSIONAL LIMITATIONS SHOWN ON DRAWING AND INITIALLY LOCATED TO ALLOW FOR MAXIMUM TOOL LIFE |
| NAME | DATE |
| DRAWN V. ZHANG | MAY./21/2025 |
| CHECKED JY. SHI | MAY./21/2025 |
| Littelfuse Expertise Applied Answers Delivered | |
| TITLE DCNH500MHXX-F, CHT | |
| FORM NO. CVP-PE40-0005 REV B | REV. A |
| THIRD ANGLE PROJECTION | SCALE 1:1 |
| DO NOT SCALE DRAWING | SHEET 1 OF 1 |