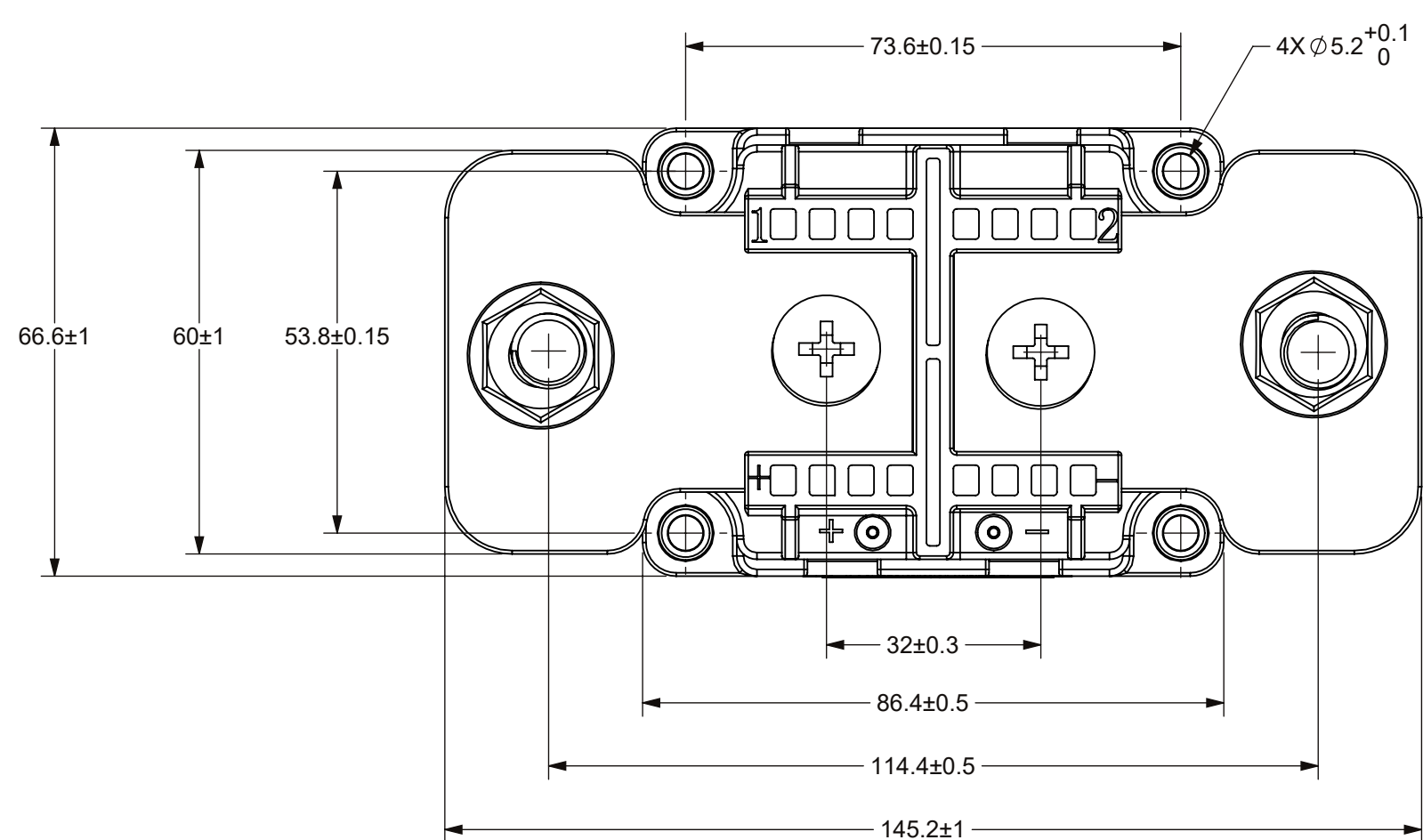
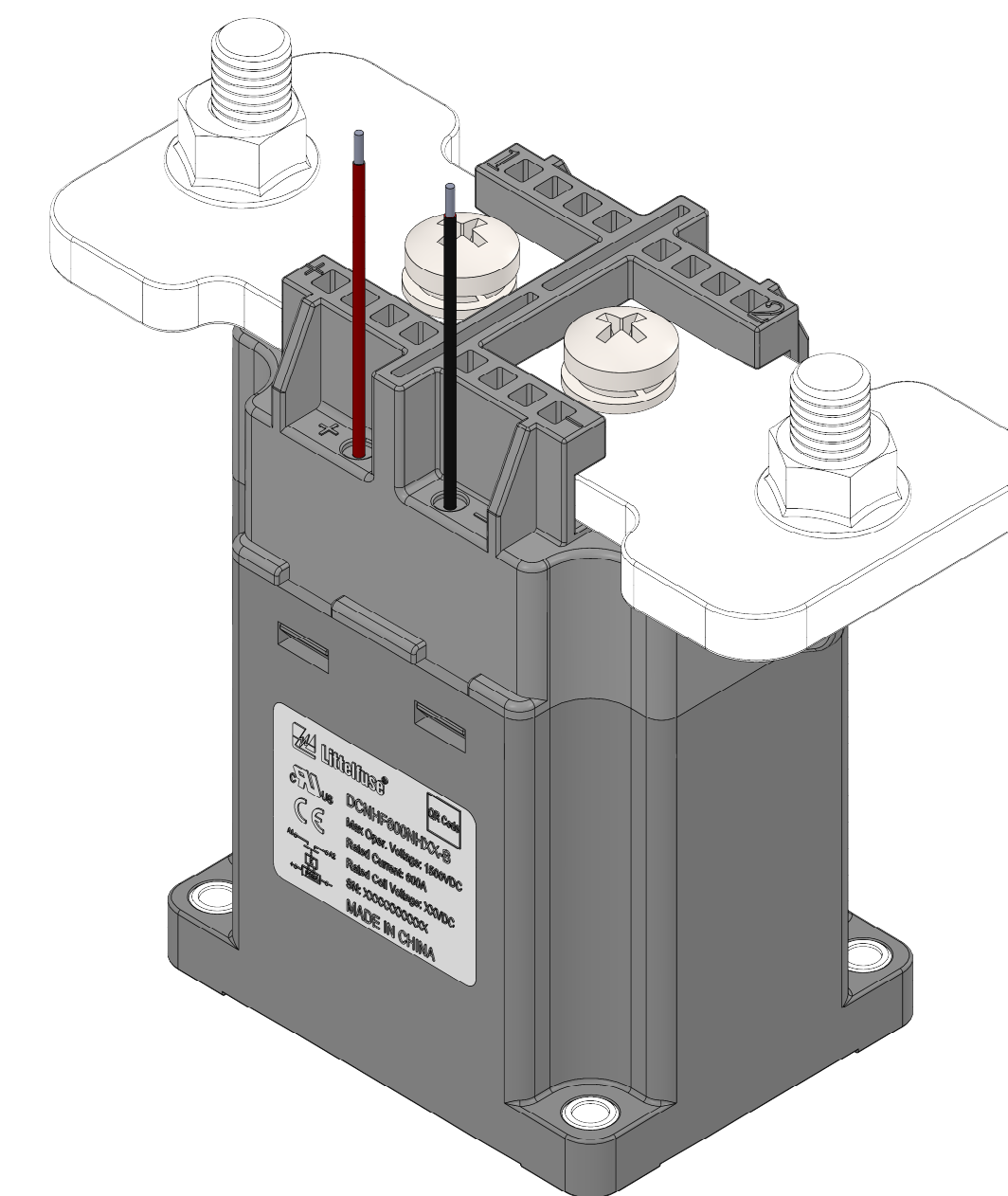
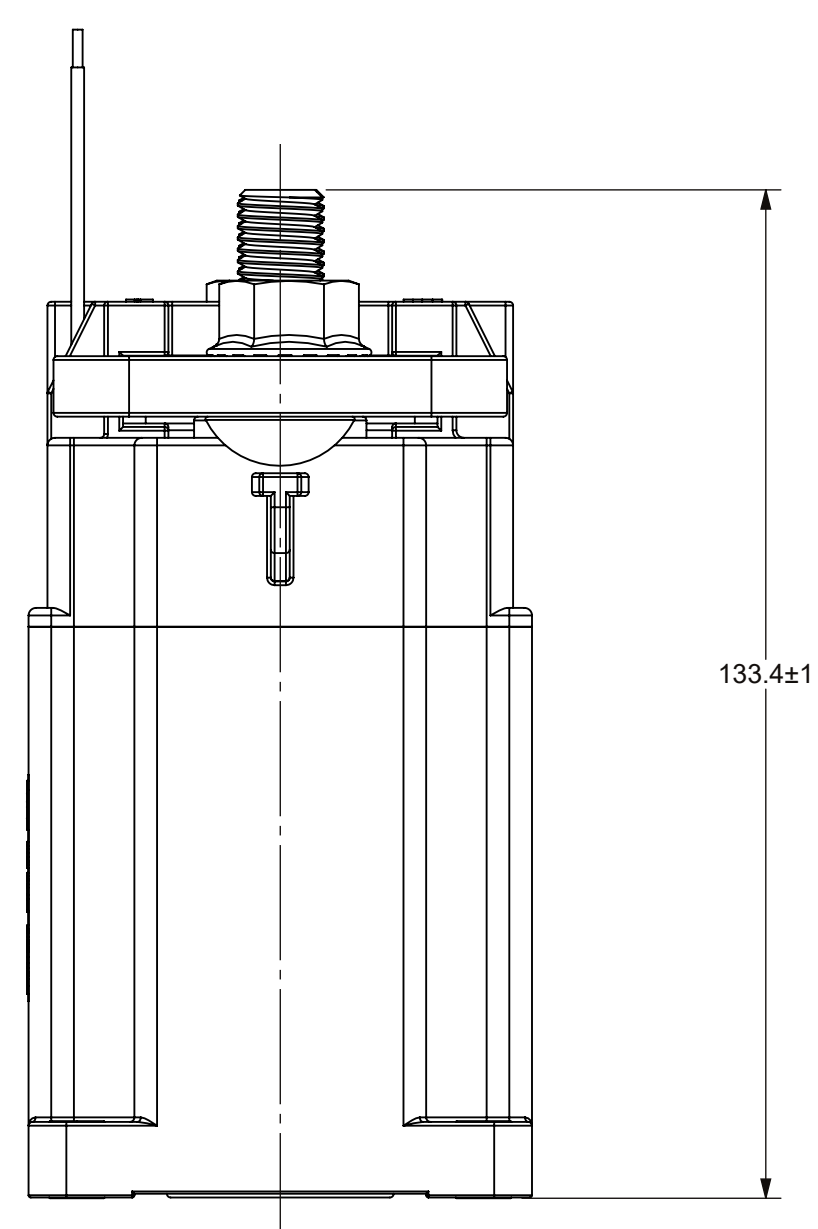
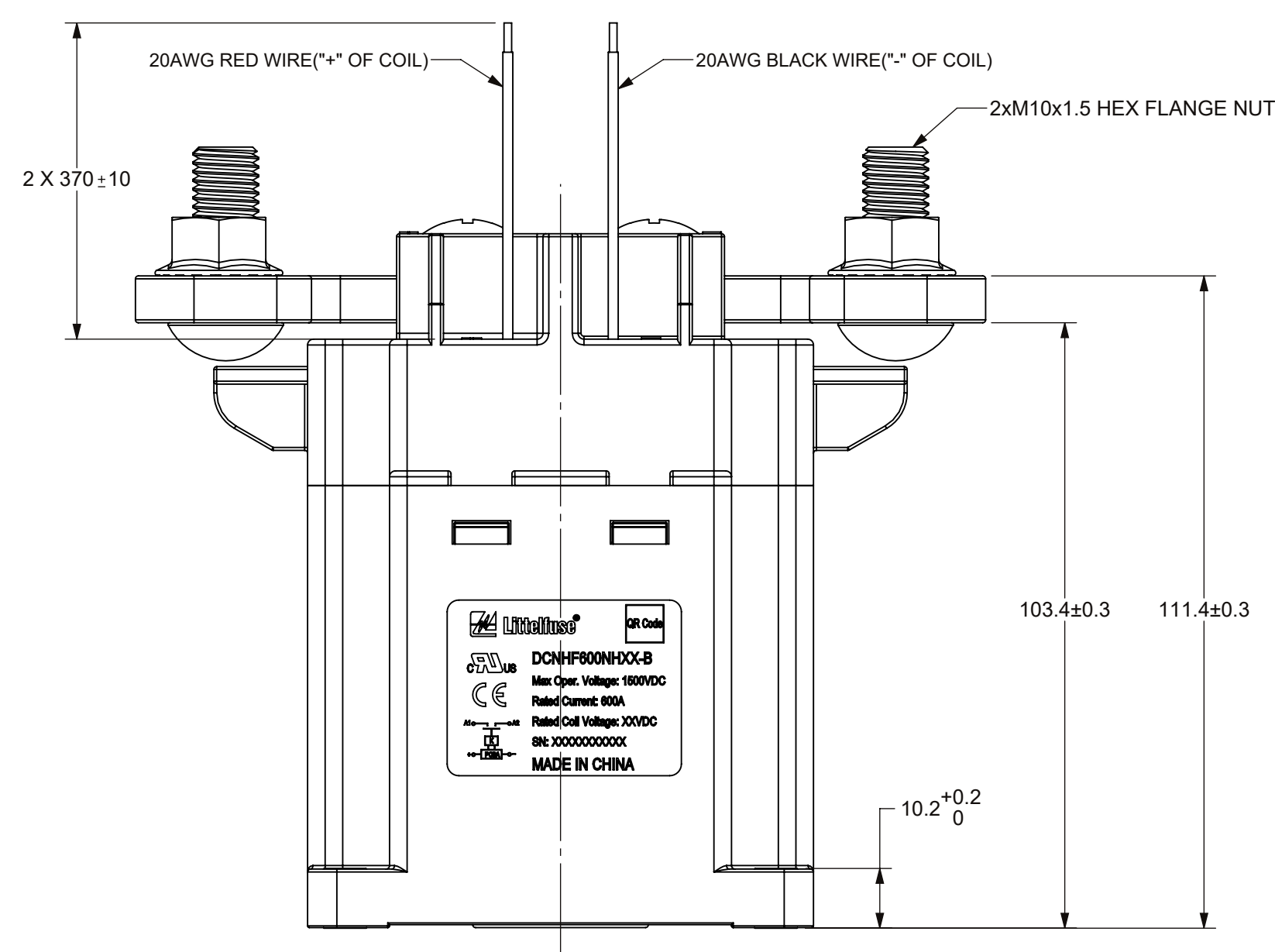
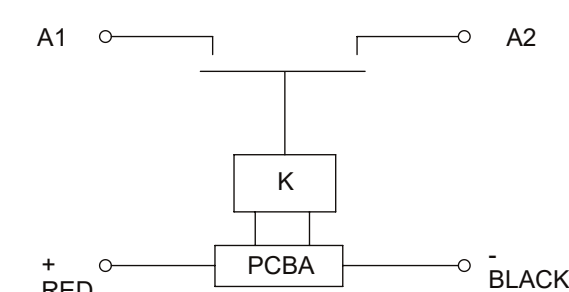


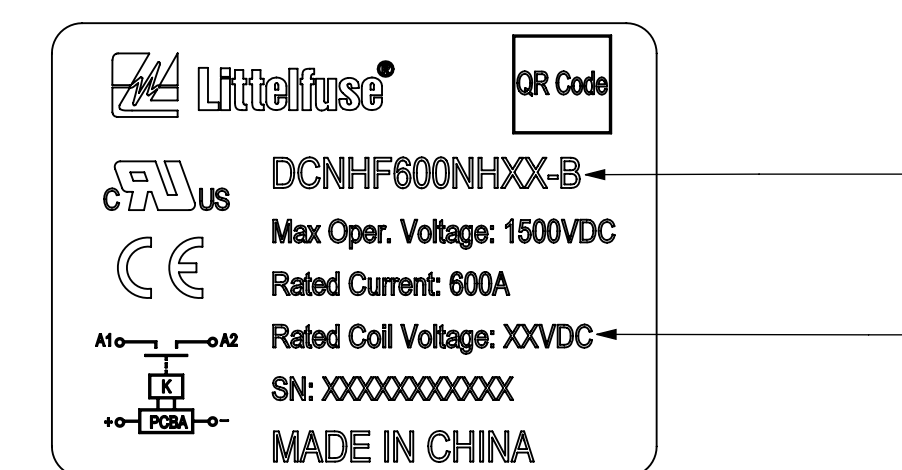
REVISIONS				
ZONE	REV.	DESCRIPTION	DATE	APPROVED
	A	PCO-50000301400 INITIAL RELEASE	MAY/27/2025	D. ZHANG



SCHEMATIC CIRCUIT DIAGRAM



NO.	"A"	"B"	REMARK
1	DCNHF600NH12-B	12VDC	NAMEPLATE(VIEW1)
2	DCNHF600NH24-B	24VDC	NAMEPLATE(VIEW1)



VIEW 1
SCALE 2:1

PART NUMBER	DCNHF600NH12-B	DCNHF600NH24-B	
Max. SWITCHING VOLTAGE	1,500V DC		
RATED CONTACT CURRENT	600A		
OPERATING VOLTAGE IN COLD STATE @ 25°C	COIL VOLTAGE	12V DC	24V DC
	MAX. VOLTAGE	16V DC	32V DC
	COIL POWER	Starting:50W(0.2s connection) ,Holding:9W	
	PICK-UP	≤8V	≤16V
	DROP-OUT	≥4.5V	≥9V
MAIN CONTACT VOLTAGE DROP	≤180mV@600A		
INSULATION RESISTANCE @ 1,500 VDC (INITIAL)	≥1,000MΩ		
DIELECTRIC STRENGTH	Between open contacts	3,000V AC, 1 MINUTE, LEAKAGE CURRENTS≤1 mA	
	Between contacts and coil	4,000V AC, 1 MINUTE, LEAKAGE CURRENTS≤1 mA	
MAX BREAK CAPABILITY	2,500A@800V DC, 1CYCLE		
ELECTRIC LIFE (RESISTIVE LOAD)	6000 CYCLES (100A @ 1000V DC)		
	100 CYCLES (600A @ 1000V DC)		
	50 CYCLES (300A @ 1500V DC)		
MECHANICAL LIFE (NO LOAD, CYCLES)	200,000		

- NOTES:
- ALL DIMENSIONS ARE REFERENCE ONLY.
 - SEE TABLE 2 FOR NAME PLATE AND PNs.
 - PRODUCT TYPE: SPST-NOL, NON-POLAR CONTACTOR.
 - MATERIALS AND FINISH:
 - 1 HOUSING: THERMOPLASTIC PLASTICS.
 - 2 CONTACTS: COPPER ALLOY.
 - 3 CONTACT STUDS: PURE COPPER.
 - 5 WEIGHT: ABOUT 1800 GRAMS.
 - 6 MAIN CONTACT M10 STUD, TORQUE: 20~25N·m.
 - 7 MOUNTING: M5 BOLT, RECOMMENDED TORQUE 3 N·m ~ 4 N·m.
 - 8 RoHS COMPLIANT.
 - 9 THE COIL OF THE CONTACTOR IS POLAR, SO THE CONNECTION OF THE COIL AND CONTACT SHOULD BE OPERATED ACCORDING TO THE SCHEMATIC CIRCUIT DIAGRAM.

DIMENSIONS ARE SHOWN IN MILLIMETERS. DIMENSIONS AND TOLERANCES ARE DEFINED ACCORDING TO ANSI/ASME Y14.5-1994.	
●	FFI FUNCTION CRITICAL CHARACTERISTICS
<S>	SAFETY COMPLIANCE CRITICAL CHARACTERISTICS SYMBOL
CPK	DENOTES CPK DIMENSIONS MINIMUM CPK VALUE
(ST)	DENOTES A CHARACTERISTIC THAT PROVIDES AN INDICATION OF PROCESS PERFORMANCE PROCEDURE FOR MEASUREMENT AND TRACKING TO BE DEFINED IN LITTELFUSE INSPECTION INSTRUCTIONS
CP	DENOTES CP DIMENSIONS. MINIMUM CP VALUE MUST BE WITHIN THE DIMENSIONAL LIMITATIONS SHOWN ON DRAWING AND INITIALLY LOCATED TO ALLOW FOR MAXIMUM TOOL LIFE.
NAME	DATE
DRAWN: V. ZHANG	MAY/27/2025
CHECKED: ZY. SHI	MAY/27/2025
FORM NO. CVP-F60-020 REV. A	TITLE
THIRD ANGLE PROJECTION	DCNHF 600A NON-POLAR CONTACTOR
SCALE 1:1	SCALE 1:1
DO NOT SCALE DRAWING	SCALE 1:1



DCNHF 600A NON-POLAR CONTACTOR

FORM NO. CVP-F60-020 REV. A
THIRD ANGLE PROJECTION
SCALE 1:1