

827 Series

High Voltage Cartridge Fuses



Description

The 827 Series fuses are specifically designed for circuit protection needs of compact auto-electronics applications. This series is rated 800Vdc with remarkable interrupting rating.

Features and Benefits

- Available in Through Hole and Bolt Down version
- RoHS compliant and lead-free
- AEC-Q200 Qualified

Applications

- On Board Charger
- Power Distribution Unit

Web Resources



Download ECAD models, order samples, and find technical resources at www.littelfuse.com

Agency Approvals

Agency	Agency File Number	Ampere Range
US	E10480	40A - 50A

Electrical Characteristics

% of Ampere Rating	Opening Time at 25°C
100%	4hrs, Min.
135%	3600 seconds, Max.

Electrical Specifications

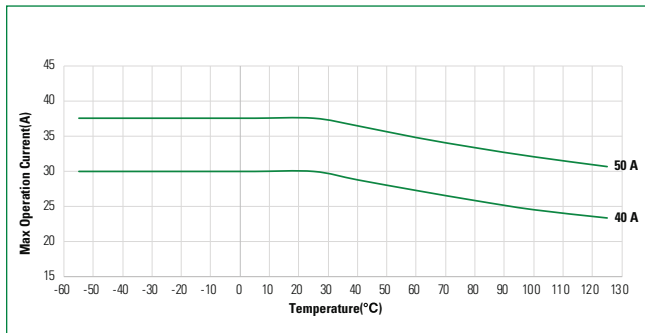
Amp Code	Ampere Rating (A)	Voltage Rating	Interrupting Rating	Nominal Cold Resistance (mOhm)	I ² t (A ² sec)	Agency Approvals
040.	40 A	800Vdc	10KA@ 800Vdc	2.04	4970	US x
050.	50 A			1.57	7056	x

Note: Unless otherwise stated, all specifications are referenced at room ambient temperature.

827 Series

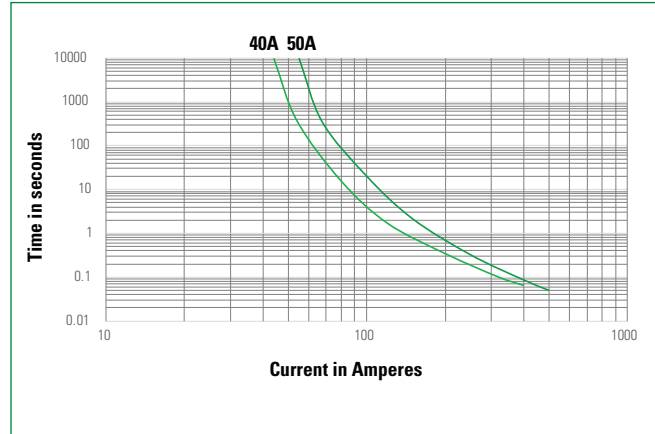
High Voltage Cartridge Fuses

Max Operation Current Curve



Note: Derating depicted in this curve is in addition to the standard derating of 25% for continuous operation.

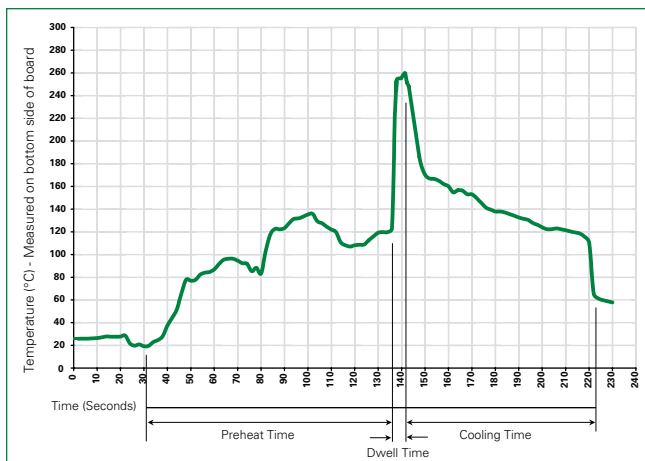
Average Time Current Curves



Product Characteristics

Materials	Body: Glass fiber Cap: Tin plated copper alloy/Ni plated copper alloy
Mechanical Shock	MIL-STD-202 Method 213
Vibration	MIL-STD-202 Method 204
Thermal Shock	JESD22-A104
Solderability	JESD22-B102E Method 1
Resistance to Solder Heat	MIL-STD-202 Method 210
Operating Temperature	-55°C to +125°C
Product Marking	Brand logo, current and voltage ratings

Soldering Parameters—Wave Soldering



Wave Parameter	Lead-Free Recommendation
Preheat: (Depends on Flex Activation Temperature)	(Typical Industry Recommendation)
Temperature Minimum	100 °C
Temperature Maximum	150 °C
Preheat Time	60–180 seconds
Solder Pot Temperature	260 °C Maximum
Solder Dwell Time	2–5 seconds

Recommended Hand-Solder Parameters:

Solder Iron Temperature: 350 °C +/- 5 °C

Heating Time: 5 seconds max.

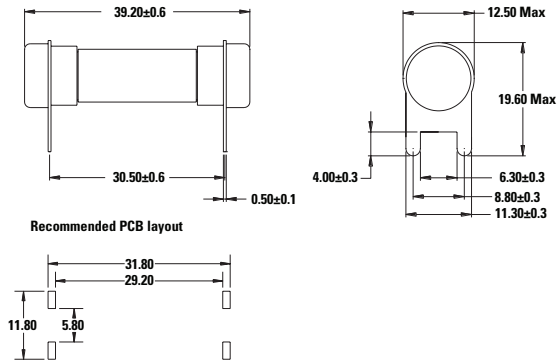
Note: These devices are not recommended for IR or Convection Reflow process.

827 Series

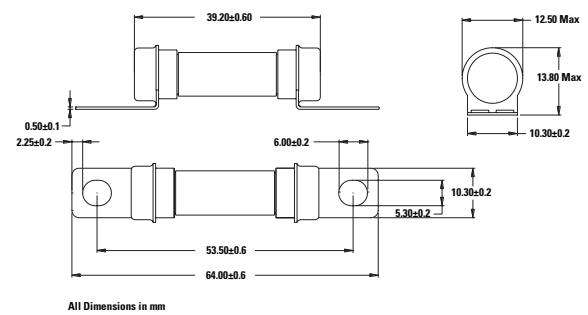
High Voltage Cartridge Fuses

Dimensions (mm)

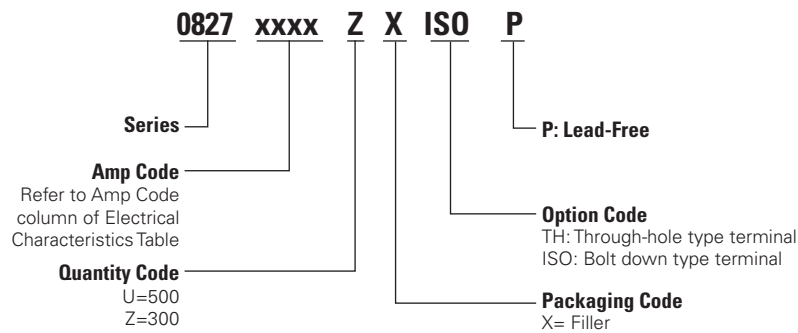
Through-hole



Bolt Down



Part Numbering System



Packaging

Packaging Option	Packaging Specification	Quantity	Quantity & Packaging Code	Reel Size
827 Though Hole Version				
Tray	NA	500	UXTH	NA
827 Bolt Down Version				
Tray	NA	300	ZXISO	NA

Disclaimer Notice - Information furnished is believed to be accurate and reliable. However, users should independently evaluate the suitability of and test each product selected for their own applications. Littelfuse products are not designed for, and may not be used in, all applications. Read complete Disclaimer Notice at <http://www.littelfuse.com/disclaimer-electronics>.