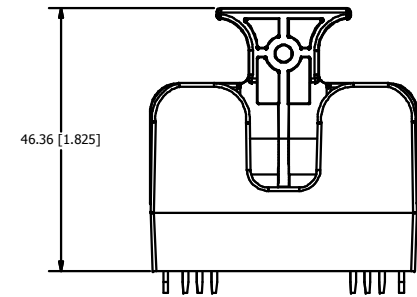
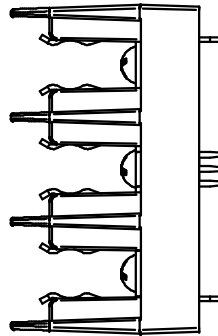
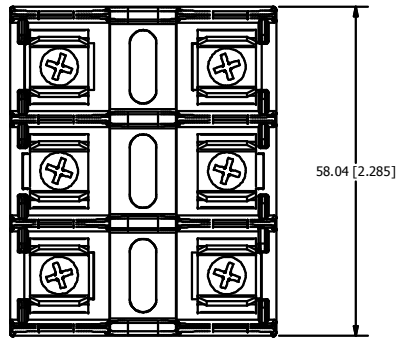
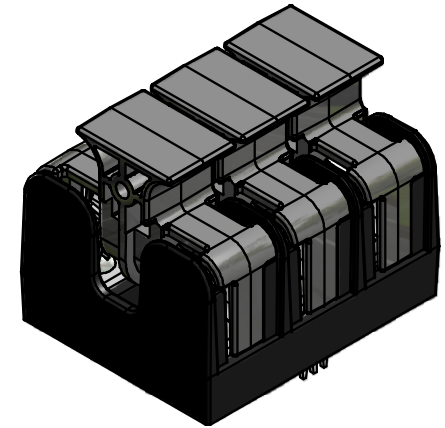
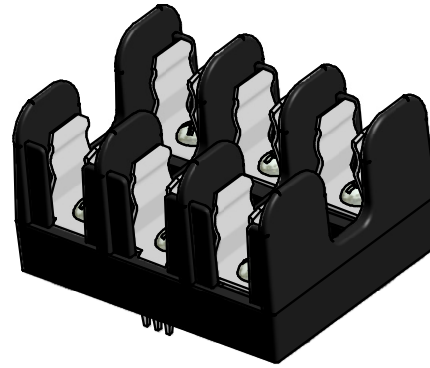
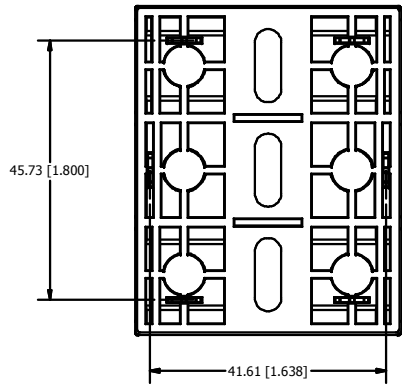
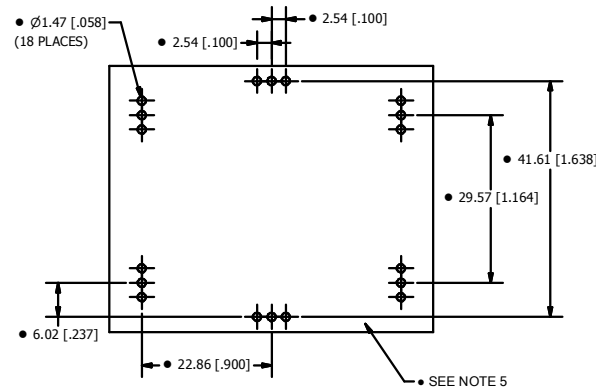
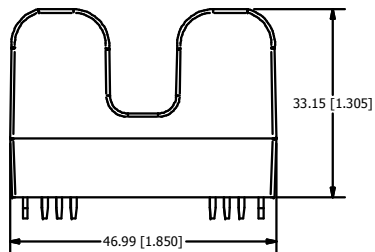


REVISION HISTORY		
REV	DATE	DESCRIPTION
A	2/22/2010	50000000128 - RELEASE MRY



FUSEBLOCK WITH OPTIONAL COVER/ PULVER
(cover/puller part number SPL0001PCBT)



RECOMMENDED
HOLE PATTERN

●	DENOTES CRITICAL CHARACTERISTICS.		
CPK	DENOTES CPK DIMENSIONS, -MINIMUM CPK VALUE		
(ST)	DENOTES A CHARACTERISTIC THAT PROVIDES AN INDICATION OF PROCESS PERFORMANCE. PROCEDURE FOR MEASUREMENT AND TRACKING TO BE DEFINED IN LITTELFUSE INSPECTION INSTRUCTIONS.		
CP	DENOTES CP DIMENSIONS, -MINIMUM CP VALUE MUST BE WITHIN THE DIMENSIONAL LIMITATIONS SHOWN ON DRAWING AND INITIALLY LOCATED TO ALLOW FOR MAXIMUM TOOL LIFE.		
MATL SPEC		FINISH	
DRW MRY	DATE 2/16/2010	SCALE NTS	FINISH GOOD WT GRAMS/PIECE
UNLESS OTHERWISE SPECIFIED, DIMENSIONS ARE IN MILLIMETERS, DIMENSIONS IN BRACKETS [] ARE INCHES DIMENSIONING AND DO NOT INCLUDE PLATING. TOLERANCING TO BE INTERPRETED IN ACCORDANCE WITH ANSI Y14.5M-1994			
380 ANGLE PROJECTION	TOLERANCE UNLESS OTHERWISE SPECIFIED ONE PLACE DEC ±.25 [.01] FRACTION ± TWO PLACE DEC ±.100 [.004] ANGULAR ±1°		
TITLE L60030M3PCB OUTLINE			
Littelfuse® DES PLAINES, ILLINOIS 60016		REVISION A	DRWG NO. QL-L60030M3PCB