

# POWR-GARD® Blocks & Holders

## LF SERIES CLASS T FUSE BLOCKS

300 V • 600 V



### Description

The Littelfuse Class T fuse blocks offer many advantages such as space saving design, mounting flexibility for easier installation, snap-to-release DIN rail mounts and available covers.

### Features/Benefits

- Space-saving design
- Accommodates a wide range of existing mounting configurations
- One hand release from DIN rail for 30–60 A fuses
- Reinforced fuse clips are standard
- Covers available for most amperages to enhance safety
- Both hex and slot set screw options available on 60 A box lugs

### Ordering Information (Class T 300 V)

AMPERE RATING	POLES	ORDERING NUMBER	TERMINATION TYPE	FUSE TORQUE	WIRE TORQUE	WIRE RANGE	WIRE TYPE		BASE TEMP RATING	DINRAIL MOUNT	COVER ORDERING NUMBER*
30	1	LFT300301C	BOX LUG (SCREWDRIVER SLOT)	-	5.6 N-m (50 in-lbs)	2–4 AWG	CU-AL	Solid/Stranded	125 °C	●	LFT30030FB
	2	LFT300302C			2.8 N-m (25 in-lbs)	6–14 AWG					
	3	LFT300303C									
60	1	LFT300601C	BOX LUG (SCREWDRIVER SLOT)	-	5.6 N-m (50 in-lbs)	2–4 AWG			125 °C	●	LFT30060FB
	2	LFT300602C			2.8 N-m (25 in-lbs)	6–14 AWG					
	3	LFT300603C									
	1	LFT300601C-HX	BOX LUG (3/16" HEX)	5.6 N-m (50 in-lbs)	2–4 AWG	125 °C			●		
	2	LFT300602C-HX		2.8 N-m (25 in-lbs)	6–14 AWG						
	3	LFT300603C-HX									
100	1	LFT301001CS	BOX LUG (3/16" HEX)	7.9 N-m (70 IN-LB)	13.6 N-m (120 in-lbs)	2/0-6 AWG			130 °C	—	LFT30100FB
	3	LFT301003CS			4.5 N-m (40 in-lbs)	8 AWG					
					4.0 N-m (35 in-lbs)	10–14 AWG					
200	1	LFT302001CS	BOX LUG (5/16" HEX)	13.6 N-m (120 IN-LB)	31.1 N-m (275 in-lbs)	250 kcmil-6			130 °C	—	—
	3	LFT302003CS									
400	1	LFT304001CS	BOX LUG (5/16" HEX)	19.2 N-m (170 IN-LB)	(2) 31.1 N-m (275 in-lbs)	250 kcmil-6			130 °C	—	—
	3	LFT304003CS									
600	1	LFT306001CS	BOX LUG (3/8" HEX)	19.2 N-m (170 IN-LB)	(2) 42.4 N-m (375 in-lbs)	500 kcmil-6			130 °C	—	—
	3	LFT306003CS									

\* Covers sold individually. One cover needed for each pole.

### Specifications

**Voltage Ratings**  
**Ampere Ratings**  
**Withstand Rating**

300 V/600 V  
0–600 A  
200 kA RMS SYM

#### Materials:

**Base**  
**Fuse Clip**  
**Box Lug**  
**Fuse Studs**  
**Pressure Plate Terminal**  
**Screw Terminal**  
**Flammability Rating**  
**Approvals**

Thermoplastic/Laminate  
Tin plated copper alloy  
Aluminum  
Zinc plated steel  
Zinc plated steel  
Zinc plated steel  
UL 94 V-0  
UL Listed (File: E14721)  
CSA Certified (File: LR7316)  
RoHS Compliant, Lead (Pb) Free

#### Environmental

### Recommended Fuses

**300 V** JLLN  
**600 V** JLLS

### Web Resources

Sample requests, downloadable CAD drawings and other technical information:

**Littelfuse.com/lft**  
**Littelfuse.com/fuseblocks**

# POWR-GARD® Blocks & Holders

## LF SERIES CLASS T FUSE BLOCKS

### Ordering Information (Class T 600 V)

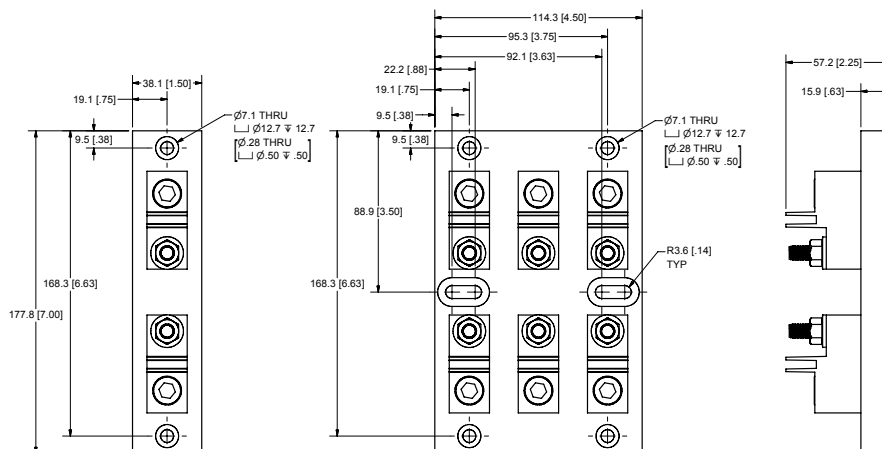
AMPERE RATING	POLES	ORDERING NUMBER	TERMINATION TYPE	FUSE TORQUE	WIRE TORQUE	WIRE RANGE	WIRE TYPE		BASE TEMP RATING	DINRAIL MOUNT	COVER ORDERING NUMBER*		
30	1	LFT600301C	BOX LUG (SCREWDRIVER SLOT)	-	5.6 N-m (50 in-lbs)	2–4 AWG	CU-AL	Solid/Stranded	125 °C	●	LFT60030FBC		
	2	LFT600302C			2.8 N-m (25 in-lbs)	6–14 AWG							
	3	LFT600303C											
	1	LFT600301P	PRESSURE PLATE	-	2.8 N-m (25 in-lbs)	10–14 AWG	CU ONLY		125 °C	●			
	2	LFT600302P											
	3	LFT600303P											
	1	LFT600301S	SCREW	-	2.8 N-m (25 in-lbs)	10–22 AWG	CU ONLY		125 °C	●			
	2	LFT600302S											
	3	LFT600303S											
60	1	LFT600601C	BOX LUG (SCREWDRIVER SLOT)	-	5.6 N-m (50 in-lbs)	2–4 AWG	CU-AL	Solid/Stranded	125 °C	●	LFT60060FBC		
	2	LFT600602C			2.8 N-m (25 in-lbs)	6–14 AWG							
	3	LFT600603C											
	1	LFT600601C-HX	BOX LUG (3/16" HEX)	-	5.6 N-m (50 in-lbs)	2–4 AWG			125 °C	●			
	2	LFT600602C-HX			2.8 N-m (25 in-lbs)	6–14 AWG							
	3	LFT600603C-HX											
100	1	LFT601001CS	BOX LUG (3/16" HEX)	7.9 N-m (70 IN-LB)	13.6 N-m (120 in-lbs)	2/0-6 AWG			CU-AL	Solid/Stranded	130 °C	—	LT60100FBC
	3	LFT601003CS			4.5 N-m (40 in-lbs)	8 AWG							
					4.0 N-m (35 in-lbs)	10–14 AWG							
200	1	LFT602001CS	BOX LUG (5/16" HEX)	13.6 N-m (120 IN-LB)	31.1 N-m (275 in-lbs)	250 kcmil-6		130 °C			—	LT60200FBC	
	3	LFT602003CS											
400	1	LFT604001CS	BOX LUG (5/16" HEX)	19.2 N-m (170 IN-LB)	(2) 31.1 N-m (275 in-lbs)	250 kcmil-6		130 °C			—	LT60400FBC	
	3	LFT604003CS											
600	1	LFT606001CS	BOX LUG (3/8" HEX)	19.2 N-m (170 IN-LB)	(2) 42.4 N-m (375 in-lbs)	500 kcmil-6		130 °C			—	LT60600FBC	
	3	LFT606003CS											

\* Covers sold individually. One cover needed for each pole.

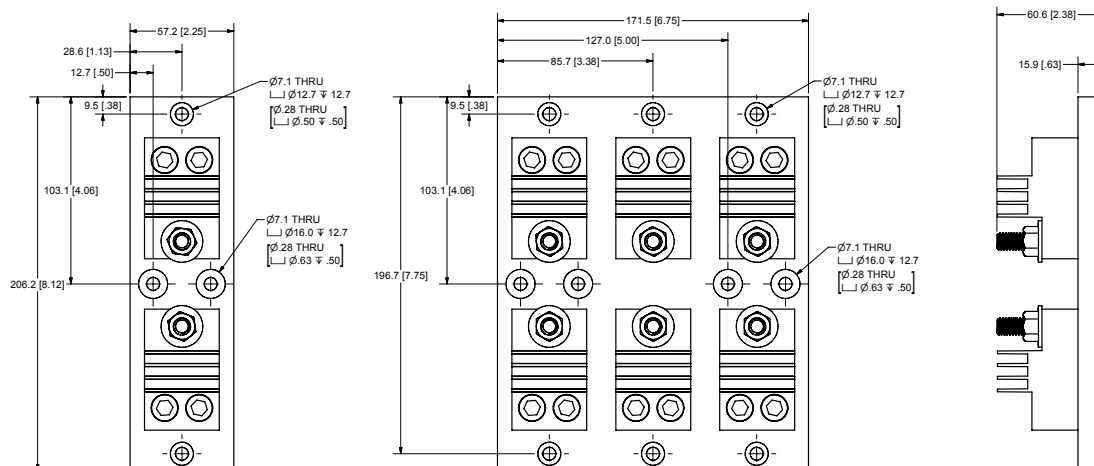
**300 V 30 A**



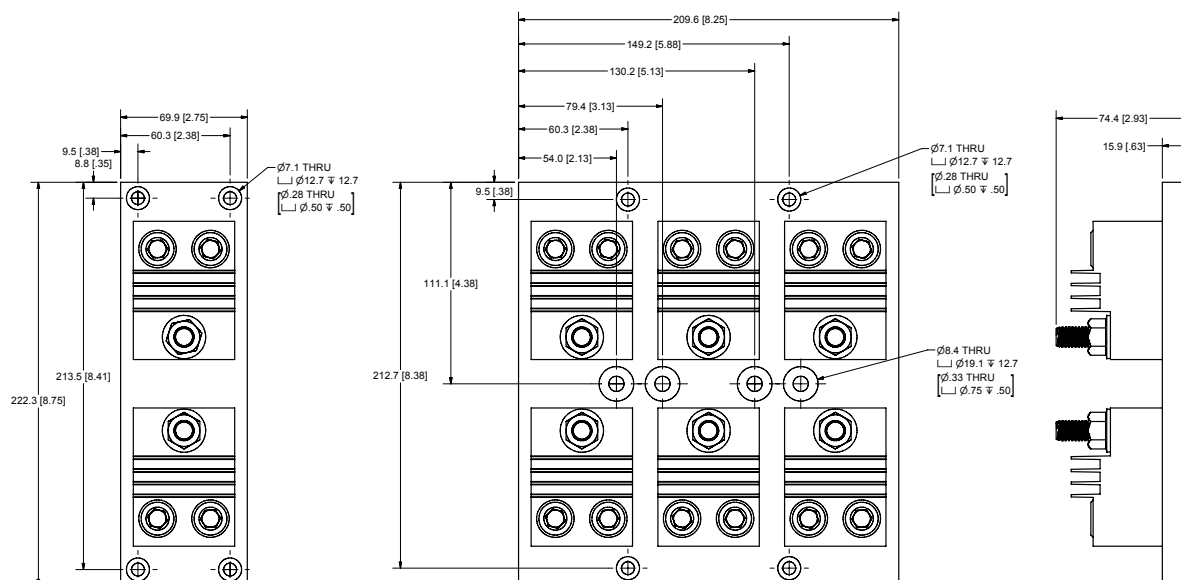
**300 V 200 A**



**300 V 400 A**



**300 V 600 A**

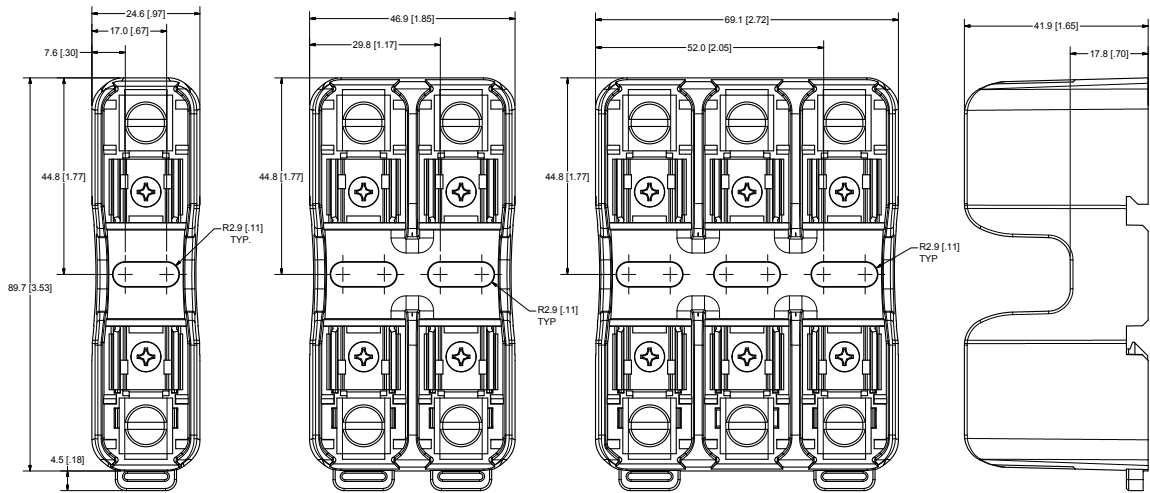


# POWR-GARD® Blocks & Holders

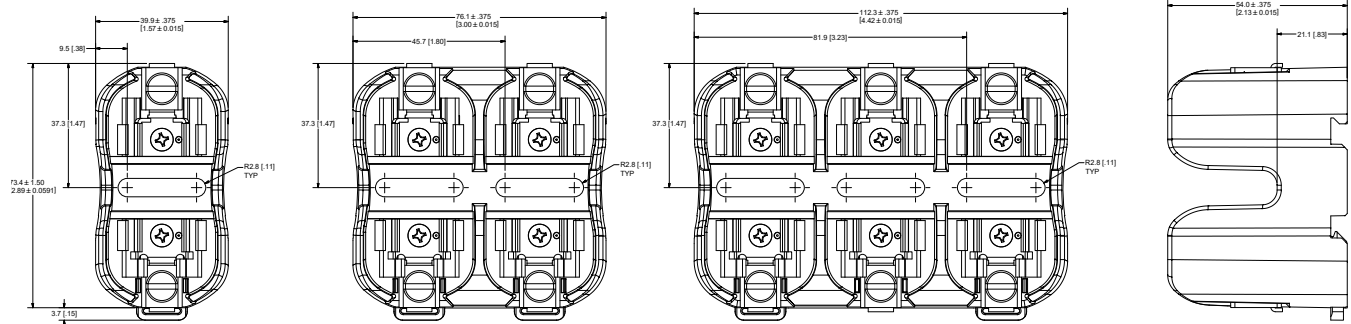
## LF SERIES CLASS T FUSE BLOCKS

### Dimensions mm (inches)

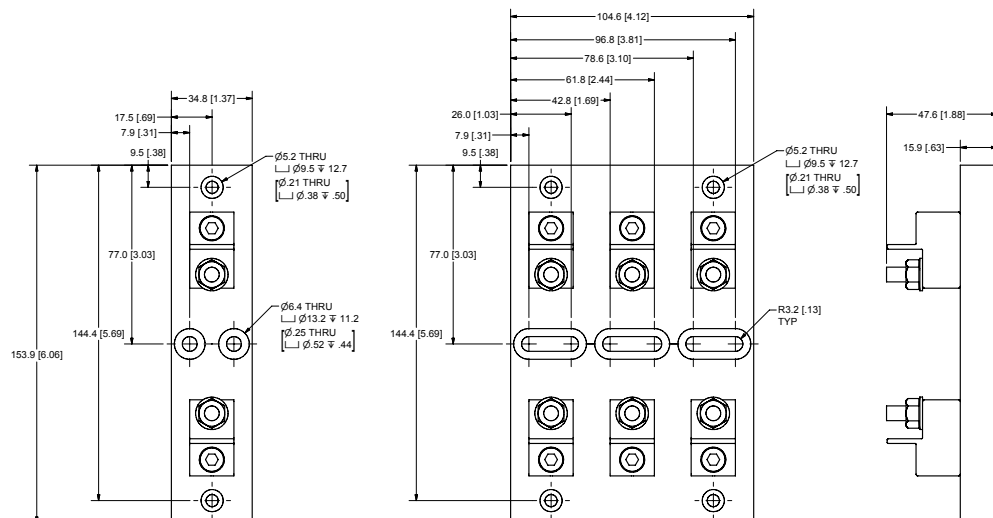
#### 600 V 30 A



#### 600 V 60 A



#### 600 V 100 A

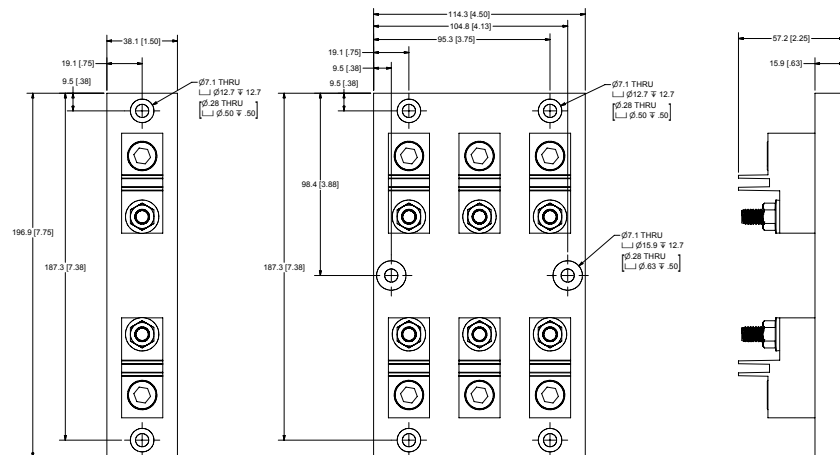


# POWR-GARD® Blocks & Holders

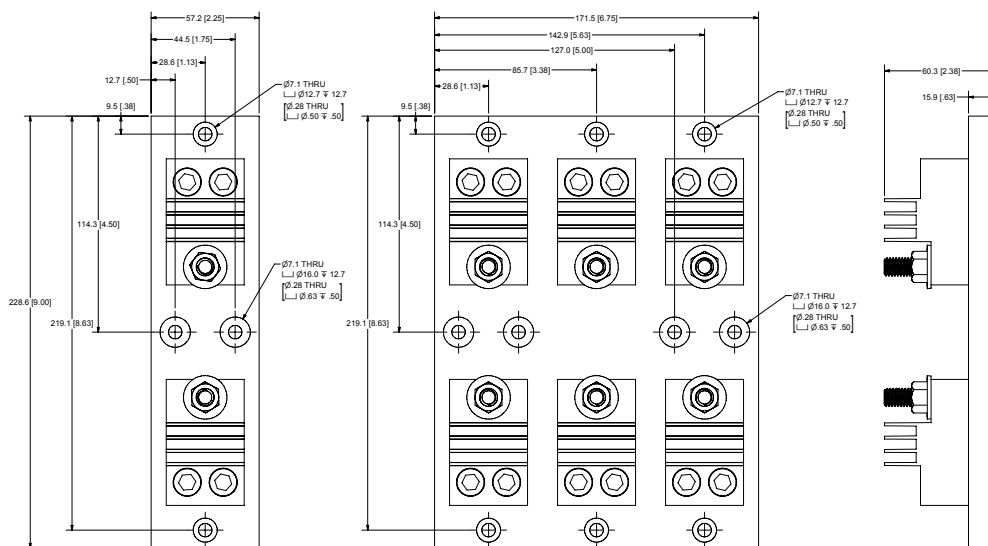
## LF SERIES CLASS T FUSE BLOCKS

### Dimensions mm (inches)

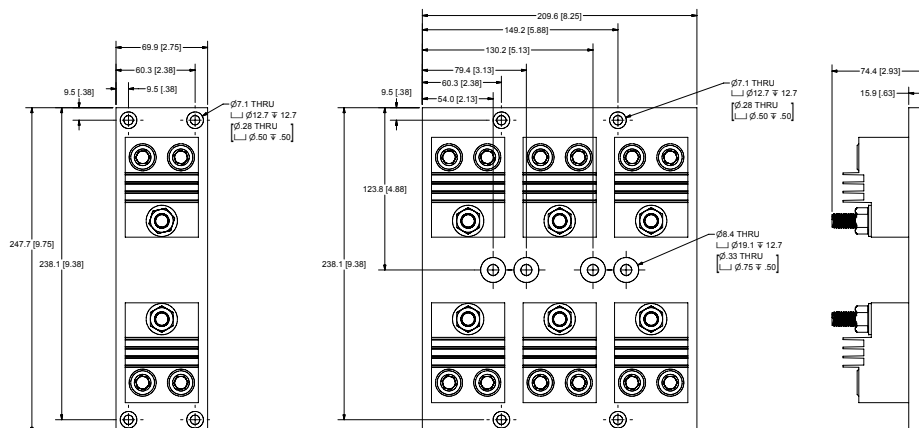
#### 600 V 200 A



#### 600 V 400 A



#### 600 V 600 A



For additional product information, contact Littelfuse Technical Support at 1-800-TEC-FUSE or [techline@littelfuse.com](mailto:techline@littelfuse.com).

**Disclaimer Notice** - Information furnished is believed to be accurate and reliable. However, users should independently evaluate the suitability of and test each product selected for their own applications. Littelfuse products are not designed for, and may not be used in, all applications. **Read complete Disclaimer Notice at [www.littelfuse.com/product-disclaimer](http://www.littelfuse.com/product-disclaimer).**