

# PM Series

## 5 Tumbler Miniature Snap-in Switchlocks



### Description

Those that design point-of-sale terminals and marine equipment need a high-quality switchlock that can stand up to repeated use. That's why PM series 5 tumbler miniature snap-in switchlock series is so popular. With snap-in mounting, optional wire lead terminations and positive detent, it gives designers exactly what they need to create a successful product.

### Features & Benefits

- International agency listings
- Snap-in mounting
- Wire lead terminations available
- 5 Tumbler lock with positive detent

### Applications

- Computers
- Point-of-sale terminals
- Marine equipment

### Agency Approval

Agency	Agency File Number
	E42363

### Specifications

<b>Contact Ratings</b>	Q contact material: 4 AMPS @ 125 V AC or 28 V DC; 2 AMPS @ 250 V AC (UL / CSA); 4 AMPS @ 125 V AC, 2 AMPS @ 250 V AC, T65 (VDE). See page L-28 for additional ratings.
<b>Contact Resistance</b>	Below 10 m Ω typ. initial @ 2-4 V DC, 100 mA, for both silver and gold plated contacts.

### Electrical Characteristics

<b>Electrical Life</b>	10,000 make-and-break cycles at full load.
<b>Insulation Resistance</b>	10 <sup>9</sup> Ω min.
<b>Dielectric Strength</b>	1,000 Vrms min. @ sea level.
<b>Indexing</b>	90°: 2 positions

### Materials

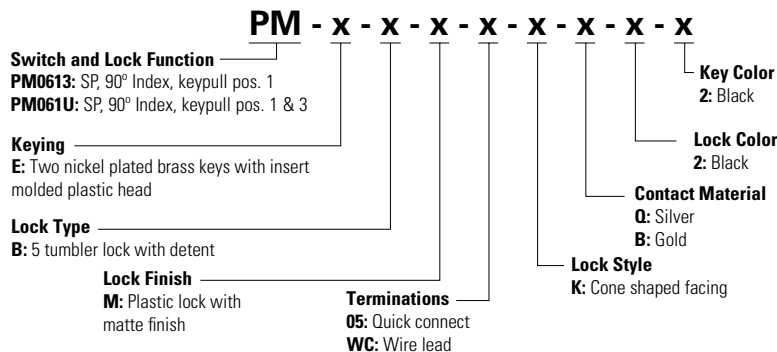
<b>Lock</b>	6/6 nylon with matte finish (UL 94V-2), color black, 5 tumbler, single bitted lock with integral detent mechanism.
<b>Keys</b>	Two nickel plated brass keys with black plastic head, other colors available.
<b>Switch Housing</b>	6/6 nylon (UL 94V-2).
<b>Contacts and Terminals</b>	Q contact material: Copper, silver plated. See page L-28 for additional contact materials

**Notes:**

Any models supplied with Q or B contact material are RoHS compliant. Specifications and materials listed above are for switchlocks with standard options. For information on specific and custom switchlocks, consult Customer Service Center.

### Ordering Number

To order, simply select desired option from each category and place in the appropriate box. Available options are shown and described on pages L-27 through L-28. For additional options not shown in catalog, consult Customer Service Center.



# PM Series

## 5 Tumbler Miniature Snap-in Switchlocks



### Switch and Lock Function

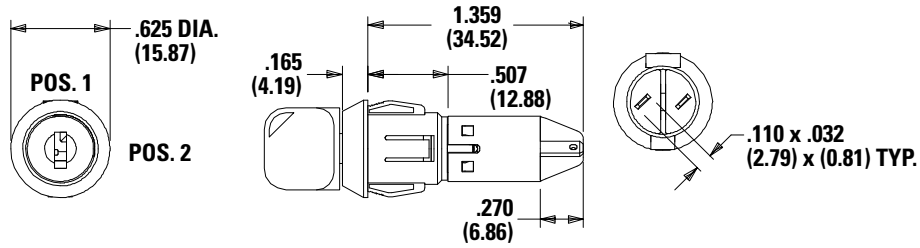
#### SP

NO Poles	Model No.	Switch Function		Key Pull Positions	Lock Configuration	Indexing
		POS. 1	POS. 2			
SP	PM0613	Off	On	Position 1		90°
	PM061U			Positions 1 & 2		

**Legend**

- = Detent Position (90°)
- ⊙ = Key pull possible in these positions.
- ⊙ = Stop Positions

### Dimensions inches (mm)

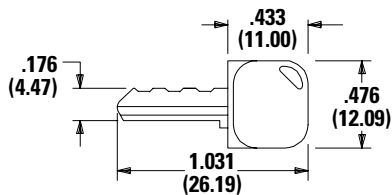


**Notes:** Part number shown: PM0613EBM05KQ22

All models c us with all options when ordered with 'Q' contact material.

### Keying

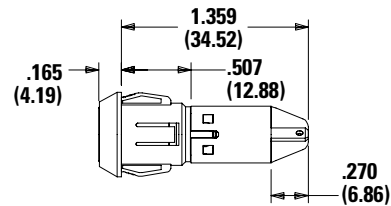
**E Two Nickel Plated Brass Keys with Insert Molded Plastic Head**



Key part number: 617D1004102

### Lock Type

**B 5 Tumbler Lock with Detent**



Option Code	Key Color
2	Black

Option Code	Lock Color
2	Black

**Notes:**

Molded plastic head color is black, standard. For more than one key code, replacement keys, or other special features, consult Customer Service Center.

# PM Series

## 5 Tumbler Miniature Snap-in Switchlocks



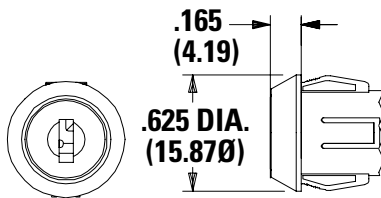
### Lock Finish

M Plastic Lock with Matte Finish



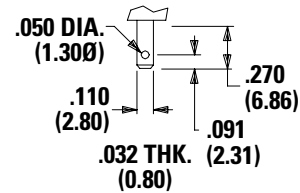
### Lock Style

K Cone Shaped Facing

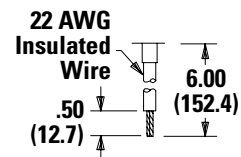


### Terminations

05 Quick Connect

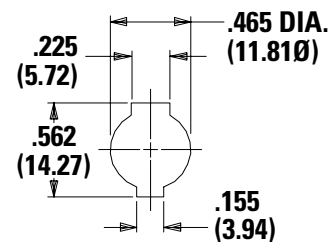


WC Wire Lead



**Notes:**  
UL style 1015. Black wire standard, other colors and lengths available, consult Customer Service Center.

### Panel Mounting



**Panel thickness:**  
.050-.080 (1.27-2.03)

### Contact Material

Option Code	ROHS Compliant <sup>1</sup>	ROHS Compatible <sup>1</sup>	Contact and Terminal Material	Rating
Q	Yes		Silver <sup>3</sup>	Power 4 AMPS @ 125 V AC or 28 V DC; 2 AMPS @ 250 AC V AC (UL/CSA).
B	Yes		Gold <sup>2</sup>	Low Level / Dry Circuit 0.4 VA Max. @ 20 V AC or DC max.

**Notes:**  
**1** See Technical Data section of this catalog for RoHS compliant and compatible definitions and specifications.  
**2** **Contacts & Terminals:** Copper, silver plated (standard with all termination options)  
**3** **Contacts & Terminals:** Copper, with gold plate over silver plate termination  
 All models **C** **RU** **US** with all options when ordered with 'Q' contact material.

### Available Hardware



**Notes:**  
**Key Code:** 041, Part No. (One Key), 617D1004102, Black  
**Material:** Brass  
**Finish:** Nickel plate, 6/6 Nylon insert molded head

**Disclaimer Notice** - Information furnished is believed to be accurate and reliable. However, users should independently evaluate the suitability of and test each product selected for their own applications. Littelfuse products are not designed for, and may not be used in, all applications. Read complete Disclaimer Notice at <http://www.littelfuse.com/disclaimer-electronics>.