

PCM Series

Ultraminiature Surface Mount Slide Switches



Description

Makers of computer peripherals, network products, telecommunication products and test & measurement equipment choose the PCM series ultraminiature surface mount slide switches when they need a long-lasting, low-profile switch. PCM switches are available in SPDT or SP3T models.

Features & Benefits

- Ultraminiature surface mount
- Low profile
- SPDT & SP3T models
- RoHS compliant

Applications

- Computer peripherals & network products
- Telecommunication products
- Test & measurement equipment

Specifications

Contact Rating	0.3A @ 6 VDC.
Electrical Life	10,000 cycles
Contact Resistance	70 m Ω max.
Insulation Resistance	100 M Ω min. @ 500V.
Dielectric Strength	500 VAC min.
Operating Temperature	-40°C to 85°C
Solderability	255C max. solder temperature
Packaging	Tape & reel.

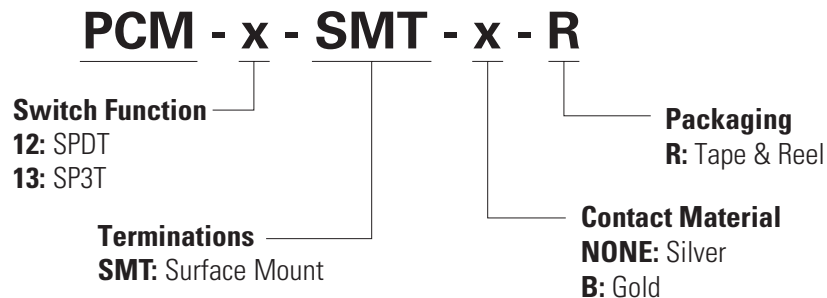
Materials

Case	PPA
Cover	Stainless steel.
Slider	Nylon 4/6
Contacts	Copper alloy, silver or gold plated.
Terminals	

Notes: All models RoHS compliant and compatible with all options. Specifications and materials listed above are for switches with standard options. For information on specific and custom switches, consult Customer Service Center.

Ordering Number

Our easy build-a-switch concept allows you to mix and match options to create the switch you need. To order, select desired option from each category and place it in the appropriate box.



PCM Series

Ultraminiature Surface Mount Slide Switches



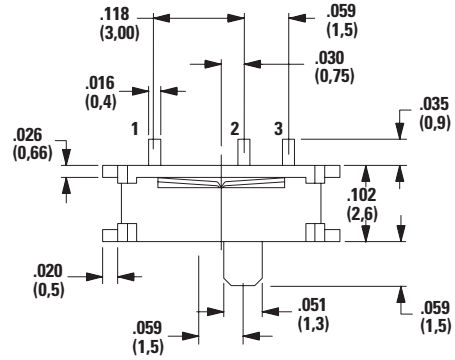
PCM12SMTR SPDT

Circuit Diagram

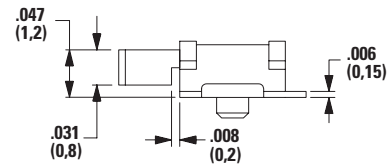
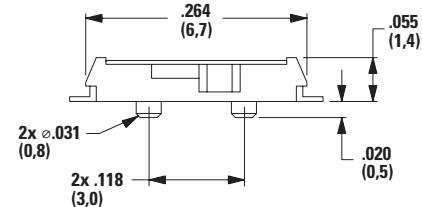
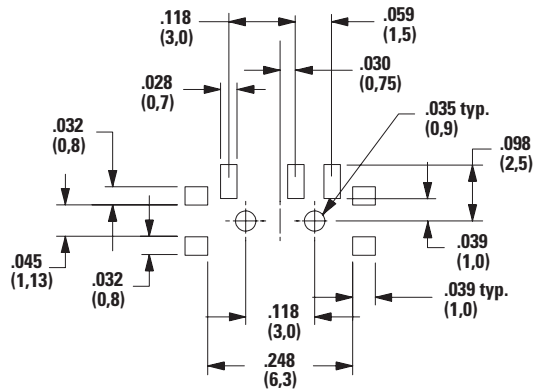
Part Number	POS.1	POS.2
PCM12SMTR SPDT	On	On
Conn. Terminals	1-2	2-3

Schematic, SPDT

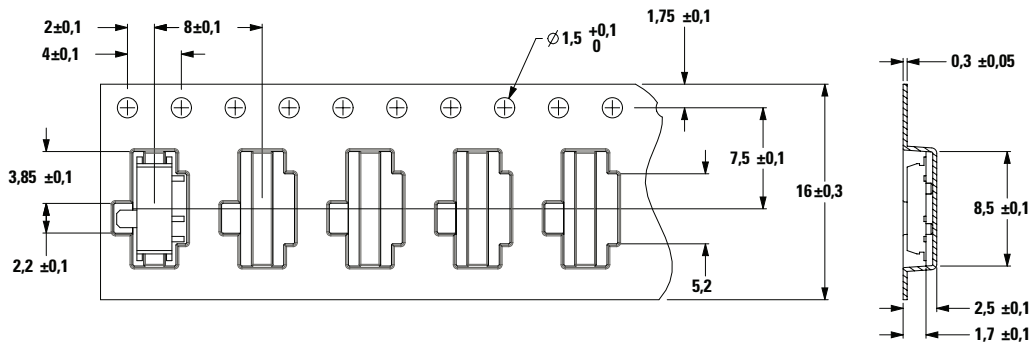
Dimensions inches (mm)



PC Mounting



Tape & Reel



Note: For part number PCM12SMTR

Quantity per reel 3500



SECTION A-A

