

KSC4 TE Series

Tireless Endurance, Sealed Tactile Switch
for SMT 6.2 x 6.3 mm, with 5.2mm Height Soft Actuator



Specifications

Function	Normally open
Contact Arrangement	SPST NO
Terminals	J bend for SMT
Contact Material	Silver plated
Sealing	IP67

Electrical Characteristics

Max. Power	0.03 VA
Min./Max. Voltage	1V / 24V
Min./Max. Current DC	1mA / 3mA
Dielectric Strength	250 Vrms
Contact Resistance	≤ 100 mΩ
Insulation Resistance	1000 MOhm
Bounce Time	1 ms

Environmental Characteristics

Operating Temperature	-40°C to 90°C
Storage Temperature	-55°C to 90°C

Process

Packaging	In reels of 1,400 pieces Dimensions of reels according to EIA 481 External diameter 380 ± 2 mm
-----------	--

Description

KSC4 TE tireless endurance tactile switch is a new KSC4 configuration with J leads, a soft actuator and a renewed combination of dome and support, upgrading the lifetime up to 10 million cycles. With a size of 6.2 x 6.3 mm and actuation forces at 1.6N, 2.8N and 4N, KSC4 TE is perfect for demanding applications such as applications in the industrial segment.

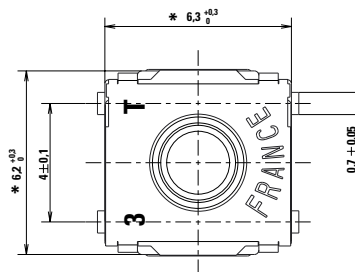
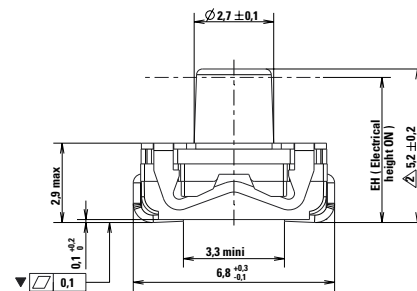
Features & Benefits

- New combination of dome/support
- J terminations
- Silicone actuator 5.2mm high
- Tape & reel
- IP67

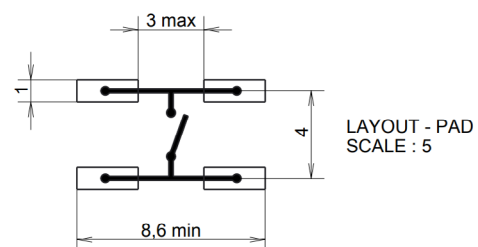
Applications

- Elevator
- Game controllers/ Drones
- Industrial applications
- Medical applications

Dimensions



J Terminations

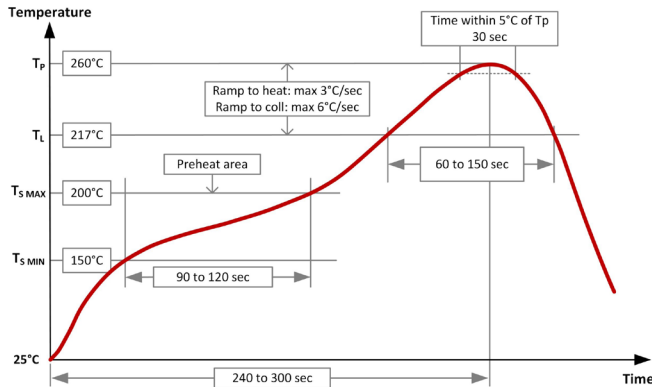


KSC4 TE Series

Tireless Endurance, Sealed Tactile Switch
for SMT 6.2 x 6.3 mm, with 5.2mm Height Soft Actuator



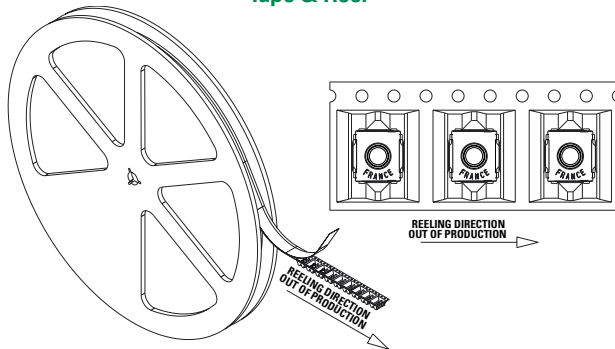
Soldering Profile



Soldering process: Depending on the application, this component is suited to the following methods:

- Terminals being silver or gold plated over a nickel barrier, the use of slightly activated flux is suitable.
- Lead free soldering process in accordance with the definition on the left.

Tape & Reel

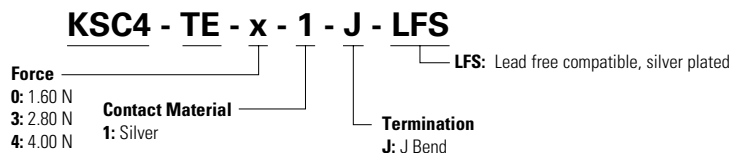


Packaging Details

Type	Tape & reel
Number of Parts in Packaging	1,400
Other Information	Tape and reel per EIA 481
Transport Conditions	According to specification NF H00-060

Ordering Number

Our easy build-a-switch concept allows you to mix and match options to create the switch you need. To order, select desired option from each category and place it in the appropriate box. For any part number different from those listed above, please consult your local representative.



Littelfuse Orderable Part Number	Description	Contact & Terminals Plating	Terminals	Operating Force Fa (Newtons)	Tactile ratio (min)	Operating Life (operations)	Electrical Height from PCB (mm)
Y29H11344FP	KSC4TE01 J LFS	Silver	J	1.6±0.6	25%	10,000,000	4.9±0.2
Y29H41344FP	KSC4TE31J LFS	Silver	J	2.8±0.7	25%	5,000,000	4.8±0.2
Y29HE1344FP	KSC4TE41J LFS	Silver	J	4±1	20%	5,000,000	4.6±0.2

Note: Life time under electrical load (24 V, 1.3 mA)

Liability Limitation

This datasheet does not provide enough information for applications that require a certain level of quality or safety such as automotive, medical systems, or safety equipment. Please contact customer service for the contractual specification package.

Disclaimer Notice - Information furnished is believed to be accurate and reliable. However, users should independently evaluate the suitability of and test each product selected for their own applications. Littelfuse products are not designed for, and may not be used in, all applications. Read complete Disclaimer Notice at <http://www.littelfuse.com/disclaimer-electronics>.