

RKC2 Series

Microminiature SMT Top Actuated Tactile Switch



Specifications

Function	Momentary action
Contact Arrangement	1 make contact = SPST N.O.
Terminals	SMT termination
Travel	0.15 ± 0.1 mm

Electrical Characteristics

Max. Voltage	12 VDC
Max. Current DC	20 mA
Contact Resistance	100 mΩ
Insulation Resistance	100 mΩ min.
Dielectric Strength	250 VA C (1 minute)
Bounce Time	≤ 10 ms

Environmental Characteristics

Operating Temperature	-40°C to 85°C
------------------------------	---------------

Description

RKC2 series is microminiature SMT top actuated tactile switch with different choices of actuation force and up to 200k lifecycles. The switch is ideal for applications that need a high density of components in limited PCB space, such as automotive keyfob, high-end consumer and health & medical devices.

Features & Benefits

- 1.7 mm height, 3.5 x 2.7 mm size
- SMT termination
- Hard actuator
- 1.8N, 2.5N, 3.5N & 5.0N actuation forces
- 100k to 200k cycles

Applications

- Automotive Keyfob
- High-end Consumer
- Health & medical devices

Process

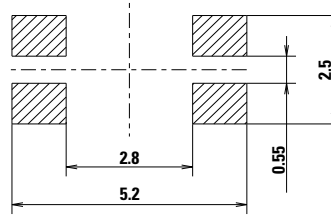
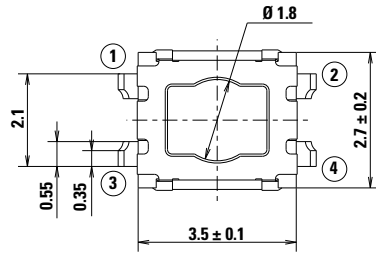
Soldering	This component is suited to the following methods: Infrared Reflow Soldering in accordance with IEC61760-1
Packaging	4,000 pieces per reel

RKC2 Series

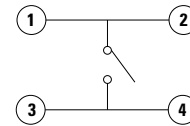
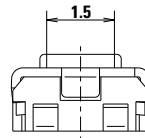
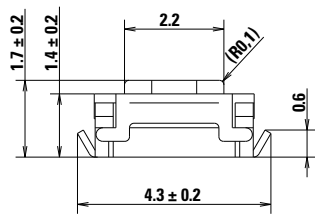
Microminiature SMT Top Actuated Tactile Switch



Standard Version without Ground Pin

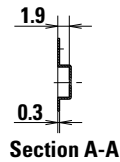
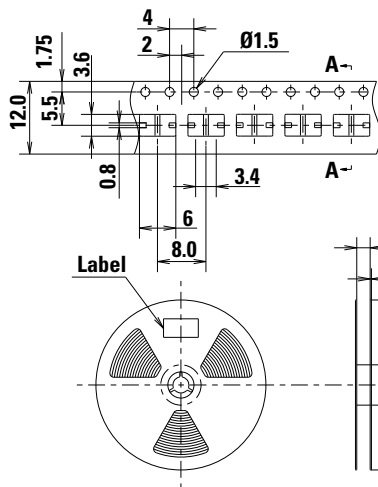


PC.B Land Dimension

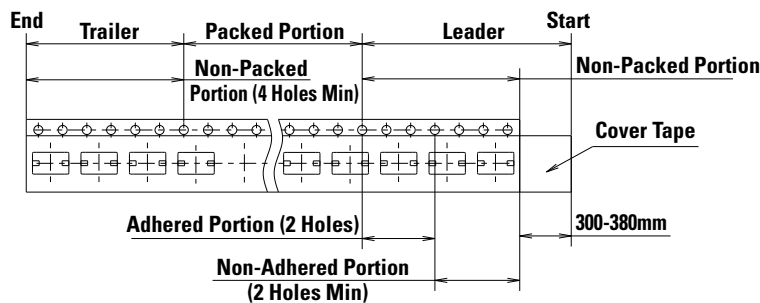
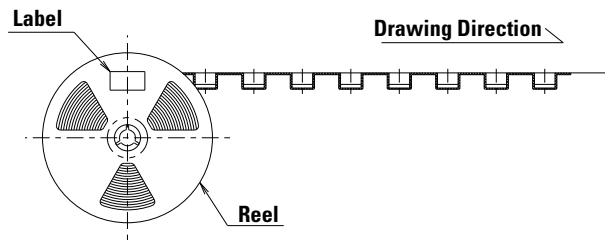


Circuit Diagram

Tape & Reel



Section A-A



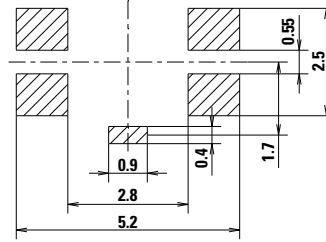
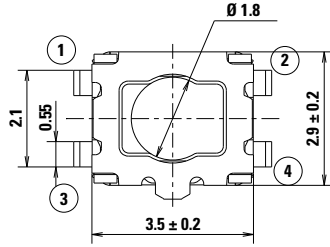
- Notes:
1. 4,000 pieces switches per 1 reel
 2. General Tolerance: 0.3mm

RKC2 Series

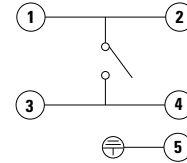
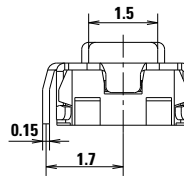
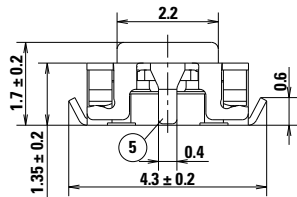
Microminiature SMT Top Actuated Tactile Switch



Version with Ground Pin

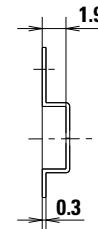
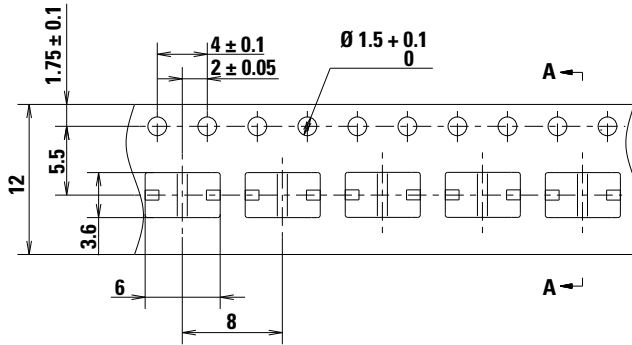


P.C.B. Layout

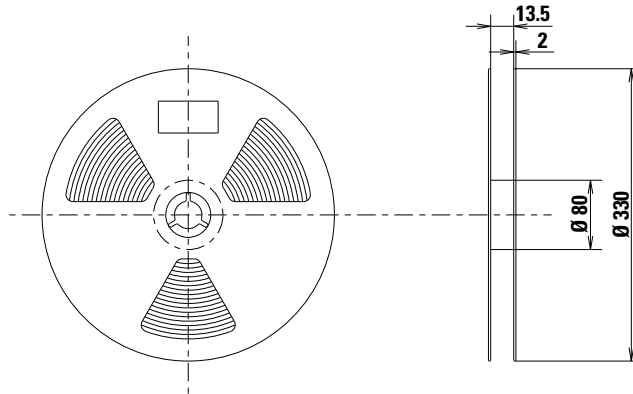


Circuit Diagram

Tape & Reel



Section A-A



- Notes:**
 1. 4,000 pieces switches per 1 reel
 2. General Tolerance: ± 0.3mm

Disclaimer Notice - Information furnished is believed to be accurate and reliable. However, users should independently evaluate the suitability of and test each product selected for their own applications. Littelfuse products are not designed for, and may not be used in, all applications. Read complete Disclaimer Notice at <http://www.littelfuse.com/disclaimer-electronics>.

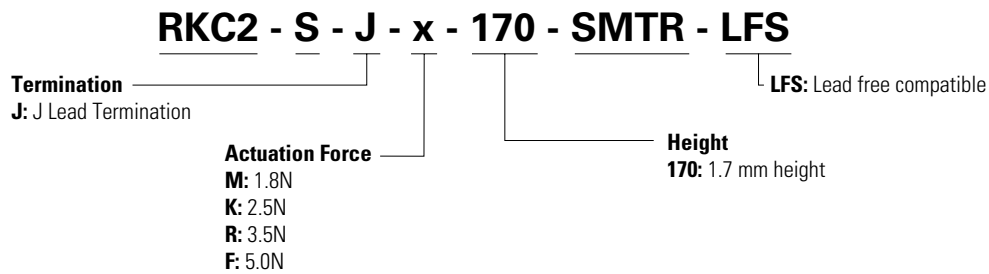
RKC2 Series

Microminiature SMT Top Actuated Tactile Switch



Ordering Number

Our easy build-a-switch concept allows you to mix and match options to create the switch you need. To order, select desired option from each category and place it in the appropriate box. For any part number different from those listed above, please consult your local representative.



Mechanical Characteristics

Supply Status	LITTELFUSE Orderable Part Number	Description	Contact & Terminals Plating	Terminals	Ground Pin	Operating Force Fa (Newtons)	Operating Life (operations)	Electrical Travel (mm)	Product Height from PCB (mm)	Actuator Color
✓	G01000447	RKC2SJF170SMTR LFS	Silver	J-leads SMT	No	5.0 +/- 1.0	100,000	0.15 ± 0.1	1.7	Blue
✓	G01026852	RKC2SJK170SMTR LFS	Silver	J-leads SMT	No	2.5 +/- 0.5	200,000	0.15 ± 0.1	1.7	White
✓	G01027329	RKC2SJM170SMTR LFS	Silver	J-leads SMT	No	1.8 +/- 0.5	200,000	0.15 ± 0.1	1.7	White
✓	G01027328	RKC2SJR170SMTR LFS	Silver	J-leads SMT	No	3.5 +/- 0.8	200,000	0.15 ± 0.1	1.7	Black

Notes: Supply status: ✓ Available for ordering.