



TF3 Series

Mid Size Snap-acting Switches (Full Disconnection - Gap > 3 mm)



Agency Approvals

Agency	Agency File Number
	E42363
	ENEC-03371

Specifications

Contact Rating	From 10A to 25A @ 125/250 V AC
Electrical Life	10,000 cycles
Mechanical Life	500,000 cycles
Insulation Resistance	100 M ohm min.
Dielectric Strength	1,500 Vrms min. @ sea level
Operating Temperature	-40°C to 125°C
Operating Force	Refer to chart for lever styles forces
Mounting	Torque screws 2-5 in/lbs

Description

TF3 mid size snap-acting switches (full disconnection - gap > 3mm) is the new extension of snap switch. With the larger disconnection gap, it is suitable for high power amperage application while providing necessary safety.

Features & Benefits

- Broad range of operating forces
- Ratings up to 25 AMPS
- Wide variety of actuator styles
- Quick connect terminations
- Extreme operating temperature up to 125°C

Applications

- Heavy duty power tools
- Motor controls
- HVAC

Materials

Switch Housing/Cover	PBT
Actuator Button	Nylon
Spring	SWP
Pivot	Copper
Movable Contacts	Silver Alloy
Movable Blade	Copper Alloy
Stationary Contacts	Silver Alloy
Terminals	Copper

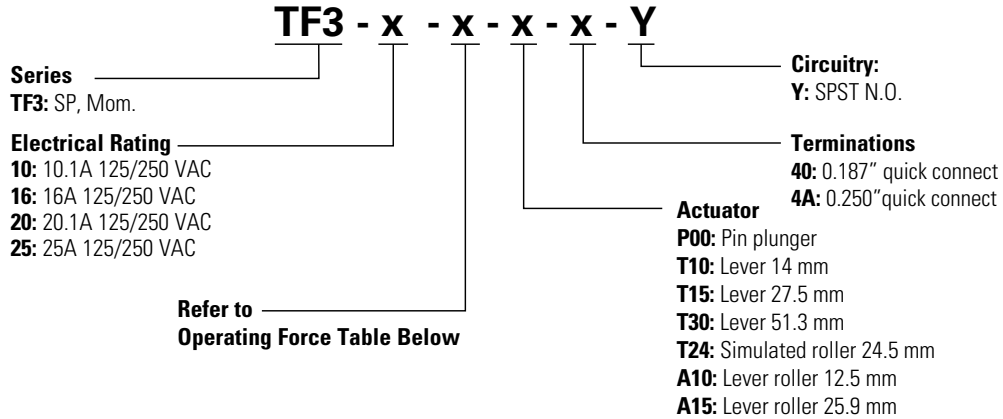
TF3 Series

Mid Size Snap-acting Switches (Full Disconnection - Gap > 3 mm)



Ordering Number

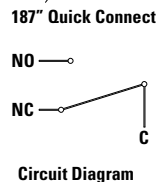
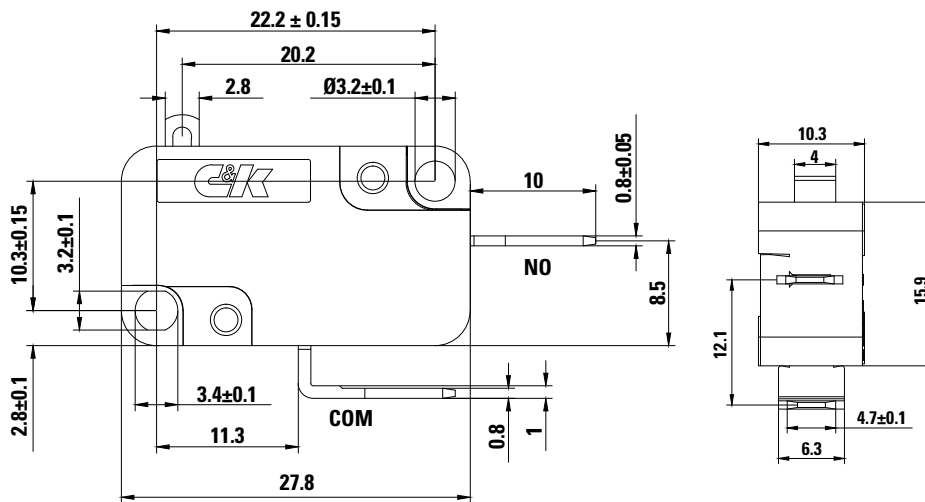
To order, simply select desired option from each category and place in the appropriate box. For additional options not shown in catalog, consult Customer Service Center.



Option Code	Operating Force
CF	Refer to operating force table
CG	
CJ	
EC	
EE	
EK	

TF3 Series

Mid Size Snap-Acting Switches (Full Disconnection)



Electrical Rating

Option Code	RoHS Compliant	RoHS Compatible	Electrical Rating
10	Yes		10.1A @ 125/250 V AC
16			16A @ 125/250 V AC
20			20A @ 125/250 V AC
25			25A @ 125/250 V AC

TF3 Series

Mid Size Snap-acting Switches (Full Disconnection - Gap > 3 mm)



Operating Force with Associated Actuator

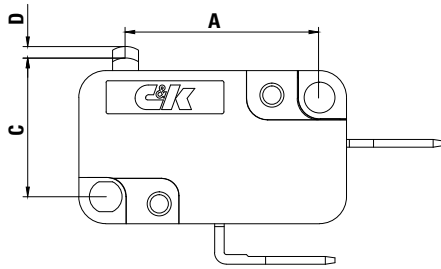
Option Code	Operating Force Max. (grams)		
	CF	CG	CJ
P00	190	510	842
T10			753
T15	100	260	374
A10	190	510	842
A15	102	275	395
-	EC	EE	EK
T30	46	80	115
T24	88	170	235

Actuator

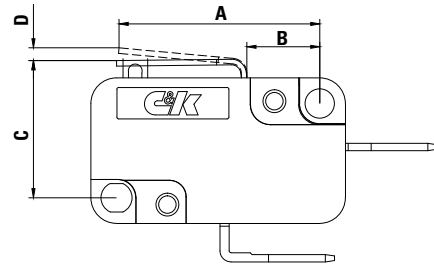
Option Code	'A'	'B'	'C'	'D'	'E'
P00	20.2	8	14.4 ± 0.5	1.9	-
T10	21.94		15.0 ± 0.8	2.4	-
T15	35.38		15.0 ± 1.5	4.8	-
A10	20.61		20.4 ± 0.7	2.2	Ø4.8
A15	33.57	20.4 ± 1.4	4.5	Ø4.8	
T30	65.11	14	15.0 ± 4.7	15	-
T24	38.43		18.4 ± 2.0	7.2	0.7

Actuator Dimensions

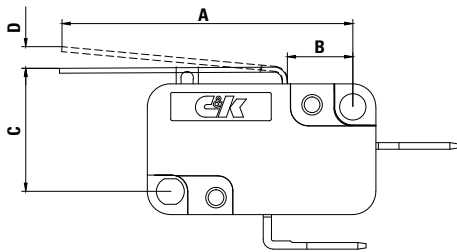
P00 Plunger



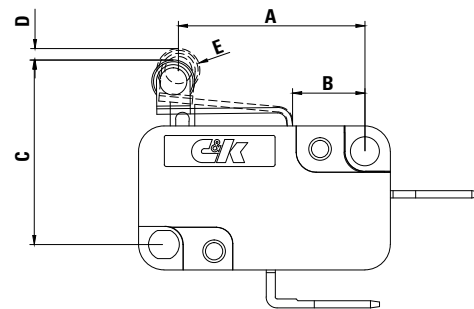
T10 Lever 14 mm



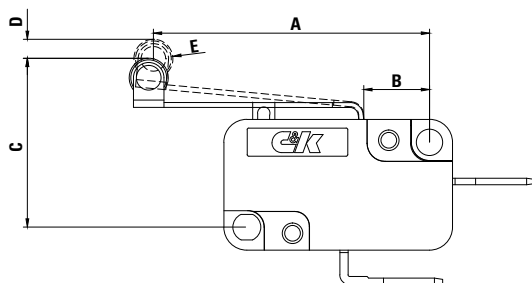
T15 Lever 27.5 mm



A10 Lever Roller 12.5 mm



A15 Lever Roller 25.9 mm

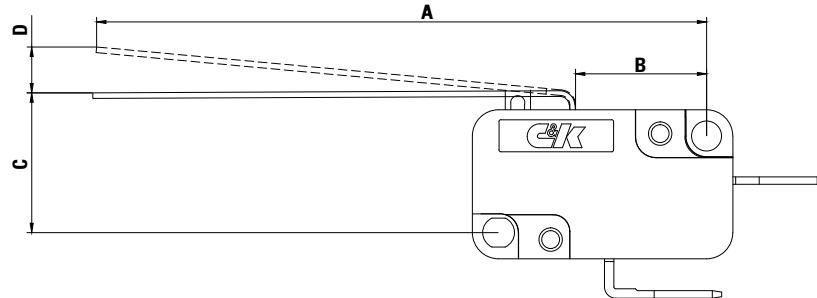


TF3 Series

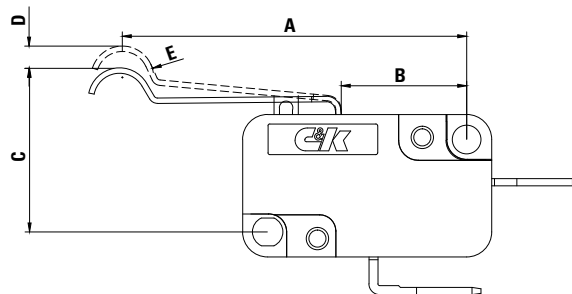
Mid Size Snap-acting Switches (Full Disconnection - Gap > 3 mm)



T30 Lever 51.3 mm



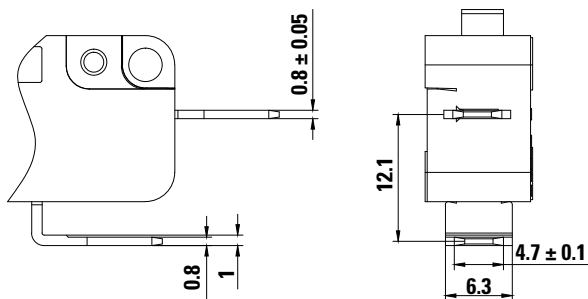
T24 Simulated Roller 24.5 mm



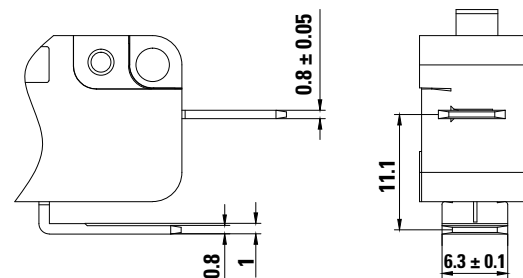
Option Code	Operating Force Max. (grams)			Operating Position (mm)	Pre-Travel Max. (mm)	Over-Travel Min. (mm)	Max. Differential (mm)
	CF	CG	CJ				
P00	190	510	842	14.4 ± 0.5	1.9	0.7	1.2
T10			753	15.0 ± 0.8	2.4	0.5	1.4
T15	100	260	374	15.0 ± 1.5	4.8	1.0	2.7
A10	190	510	842	20.4 ± 0.7	2.2	0.4	1.2
A15	102	275	395	20.4 ± 1.4	4.5	0.9	2.6
-	EC	EE	EK				
T30	46	80	115	15.0 ± 4.7	15	3.1	7
T24	88	170	235	18.4 ± 2.0	7.2	1.5	2.9

Terminations

40 0.187" Quick Connect



4A 0.250" Quick Connect



Disclaimer Notice - Information furnished is believed to be accurate and reliable. However, users should independently evaluate the suitability of and test each product selected for their own applications. Littelfuse products are not designed for, and may not be used in, all applications. Read complete Disclaimer Notice at <http://www.littelfuse.com/disclaimer-electronics>.