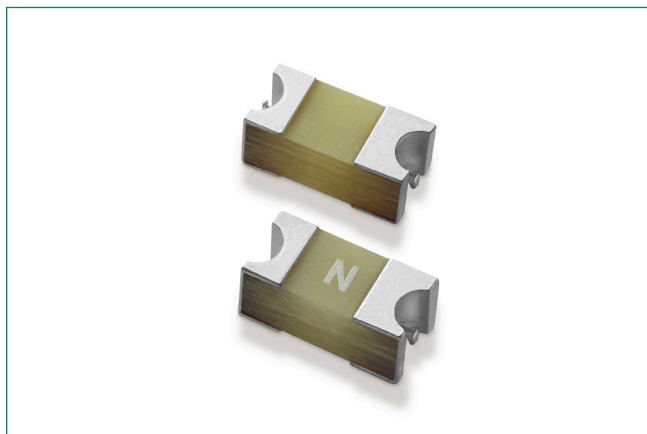


# Surface Mount Fuses

## Thin Film Fuse > 1206 High I<sup>2</sup>t > 483 Series



### Description

The 483 series belongs to the family of high-energy SMD fuses, perfect for space constrained applications. It offers the standard Nano Fuse circuit protection capability with a very small 1206 foot print. This product is RoHS compliant, Halogen-Free and 100% Pb-Free with guaranteed operating temperature of up to 125 °C.

### Features

- Very small 1206 footprint
- Fast-acting
- Pb-free, RoHS compliant and Halogen-free
- Wide operating temperature range of -55 °C to 125 °C

### Benefits

- Single fuse solution for high current application
- Suitable for a wide variety of voltage requirements and applications

### Applications

- LED lighting
- LCD/LED TVs
- Notebooks/PCs
- Gaming consoles
- Power supply units
- Telecom systems
- White goods
- Battery charging circuit protection

### Agency Approvals

Agency	Agency File Number	Ampere Range
c UL US	E10480	0.375 A – 15 A

### Electrical Characteristics

% of Ampere Rating	Opening Time
100%	4 Hours, Minimum
250%	5 Seconds, Maximum

### Additional Information



Resources



Accessories




Samples

# Surface Mount Fuses

## Thin Film Fuse > 1206 High I<sup>2</sup>t > 483 Series

### Electrical Specifications

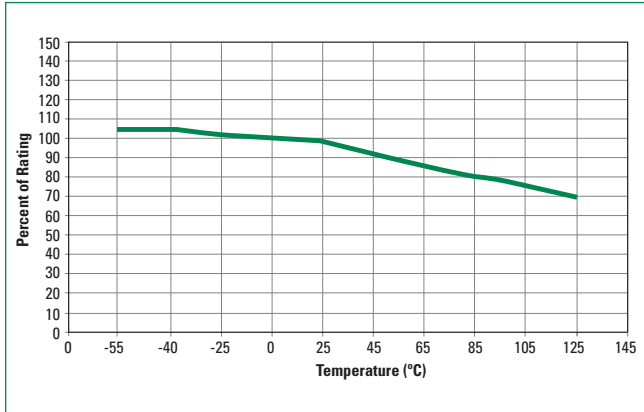
Ampere Rating (A)	Amp Code	Max Voltage Rating (V)	Interrupting Rating	Nominal Cold Resistance (Ohms)	Nominal Melting I <sup>2</sup> t (A <sup>2</sup> sec.)	Agency Approvals
						
0.375	0.375	75	50A @ 75VDC/VAC	0.530	0.027	x
0.500	0.500	75		0.380	0.065	x
0.750	0.750	75		0.235	0.150	x
1.00	001.	75		0.165	0.310	x
1.25	1.25	75		0.133	0.550	x
1.50	01.5	75		0.103	0.800	x
2.00	002.	75		0.073	2.000	x
2.50	02.5	65	50A @ 65VDC/VAC	0.061	2.500	x
3.00	003.	65		0.051	4.000	x
3.15	3.15	65		0.048	4.800	x
3.50	03.5	65	50A @ 65VDC 50A @ 50VAC	0.040	6.500	x
4.00	004.	65		0.036	8.500	x
5.00	005.	65	50A @ 65VDC 50A @ 32VAC	0.027	13.00	x
6.30	06.3	65		0.0078	5.000	x
7.00	007.	32	50A @ 32VDC/VAC	0.0071	6.100	x
8.00	008.	32		0.0057	10.00	x
10.0	010.	32		0.0045	16.00	x
12.0	012.	32		0.0040	25.00	x
15.0	015.	32		0.0030	41.00	x

Note: I<sup>2</sup>t values stated for 8 msec opening time.

# Surface Mount Fuses

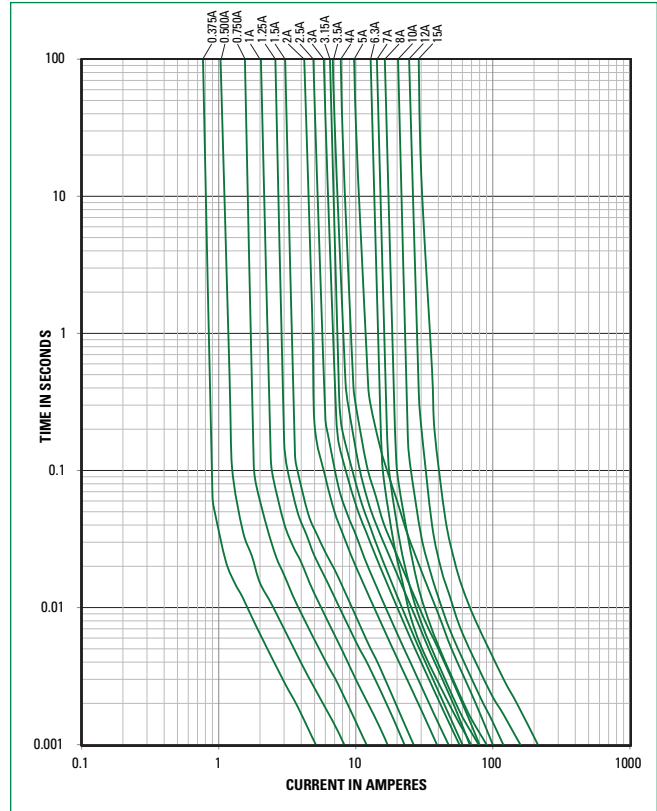
## Thin Film Fuse > 1206 High I<sup>2</sup>t > 483 Series

### Temperature Re-rating Curve



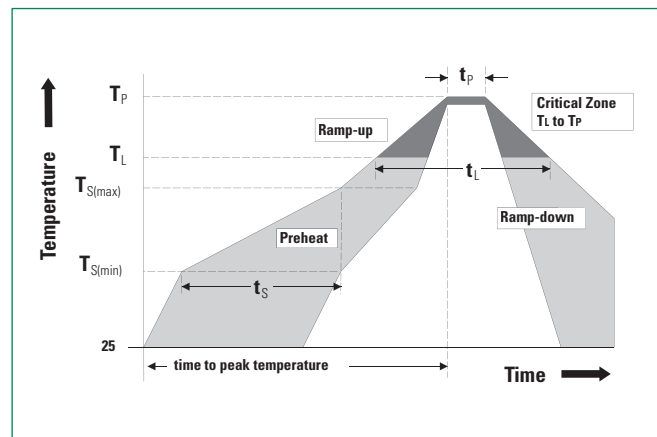
**Note**  
Derating depicted in this curve is in addition to the standard derating of 25% for continuous operation.

### Average Time Current Curves



### Soldering Parameters

<b>Reflow Condition</b>		Pb – Free assembly
<b>Pre Heat</b>	- Temperature Min ( $T_{s(min)}$ )	150 °C
	- Temperature Max ( $T_{s(max)}$ )	200 °C
	- Time (Min to Max) ( $t_s$ )	60–180 secs
<b>Average ramp up rate (Liquidus Temp (<math>T_L</math>) to peak)</b>		5 °C/second max.
<b><math>T_{s(max)}</math> to <math>T_L</math> - Ramp-up Rate</b>		5 °C/second max.
<b>Reflow</b>	- Temperature ( $T_L$ ) (Liquidus)	217 °C
	- Temperature ( $t_L$ )	60–150 secs
<b>Peak Temperature (<math>T_p</math>)</b>		260+0/-5 °C
<b>Time within 5 °C of actual peak Temperature (<math>t_p</math>)</b>		20–40 seconds
<b>Ramp-down Rate</b>		5 °C / second max.
<b>Time 25 °C to peak Temperature (<math>T_p</math>)</b>		8 minutes max.
<b>Do not exceed</b>		260 °C



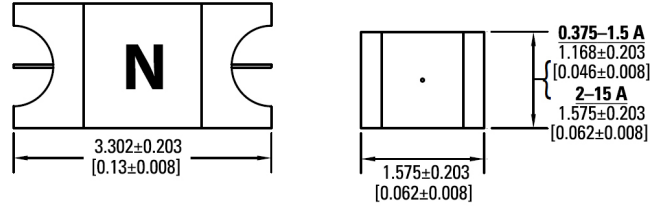
# Surface Mount Fuses

## Thin Film Fuse > 1206 High I<sup>2</sup>t > 483 Series

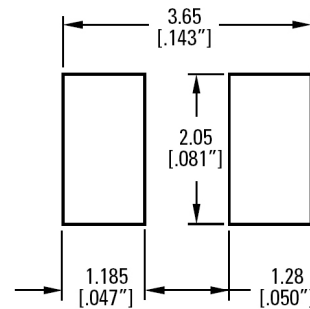
### Product Characteristics

<b>Materials</b>	<b>Body:</b> Epoxy Resin <b>Terminations:</b> Cu/Ni/Sn (100% Pb-free)
<b>Product Marking</b>	Body: Current Rating
<b>Operating Temperature</b>	-55 °C to +125 °C
<b>Solderability</b>	MIL-STD-202
<b>Thermal Shock</b>	MIL-STD-202, Method 107, Test Condition B, 5 cycles, -65 °C to 125 °C, 15 minutes @ each extreme
<b>Mechanical Shock</b>	MIL-STD-202, Method 213B, Test Condition I: De-energized. 100G's peak amplitude, sawtooth wave 6 ms duration, 3 cycles XYZ+xyz = 18 shocks
<b>Vibration</b>	MIL-STD-202, Method 201: 0.03" amplitude, 10-55 Hz in 1 min. 2 hrs. each XYZ = 6 hrs
<b>Moisture Resistance</b>	MIL-STD-202, Method 106, 10 cycles Condition A
<b>Salt Spray</b>	MIL-STD-202, Method 101, Test Condition B (48 hrs)
<b>Resistance to Soldering Heat</b>	Method 210, Test Condition B (10 sec at 260 °C)

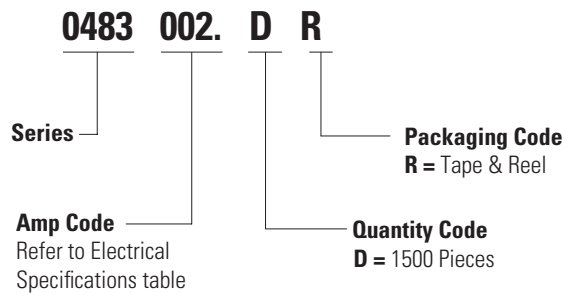
### Dimensions mm [inch]



### Recommended Pad Layout



### Part Numbering System



### Part Marking System

Amp Code	Marking Code
0.375	E
0.500	F
0.750	G
001.	H
1.25	J
01.5	K
002.	N
02.5	O
003.	P
3.15	B
03.5	C
004.	S
005.	T
06.3	U
007.	V
008.	Z
010.	10
012.	12
015.	15

### Packaging

Packaging Option	Packaging Specification	Quantity	Quantity & Packaging Code	Reel Size
8 mm Tape and Reel	EIA-481	1500	DR	N / A

**Disclaimer Notice** - Information furnished is believed to be accurate and reliable. However, users should independently evaluate the suitability of and test each product selected for their own applications. Littelfuse products are not designed for, and may not be used in, all applications. Read complete Disclaimer Notice at <http://www.littelfuse.com/disclaimer-electronics>.